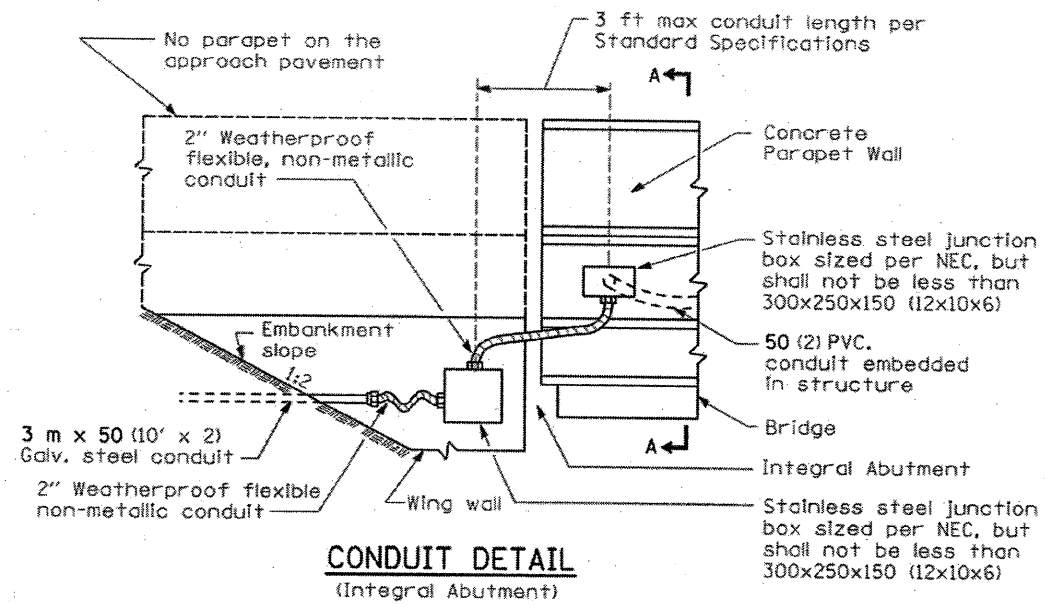
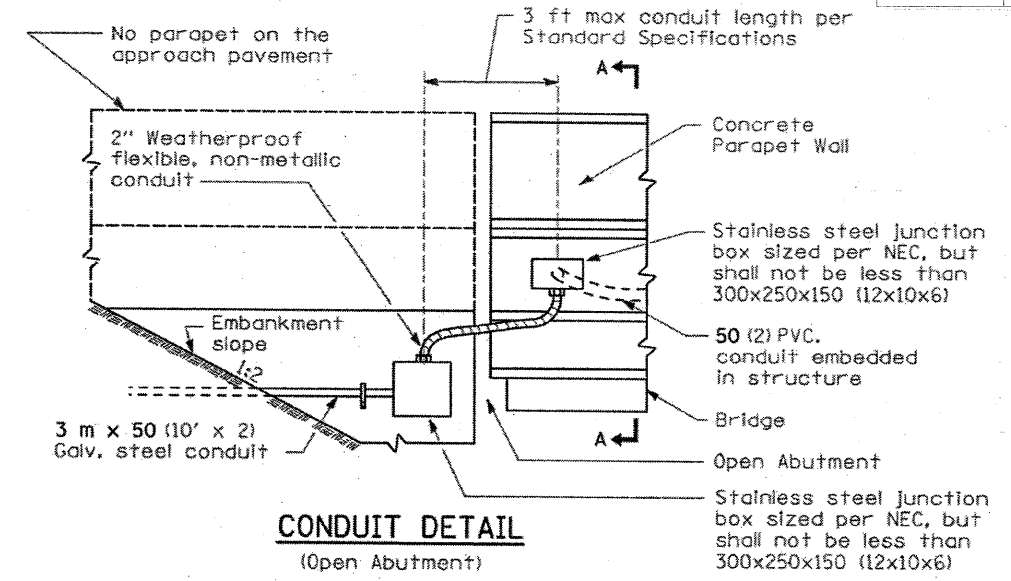


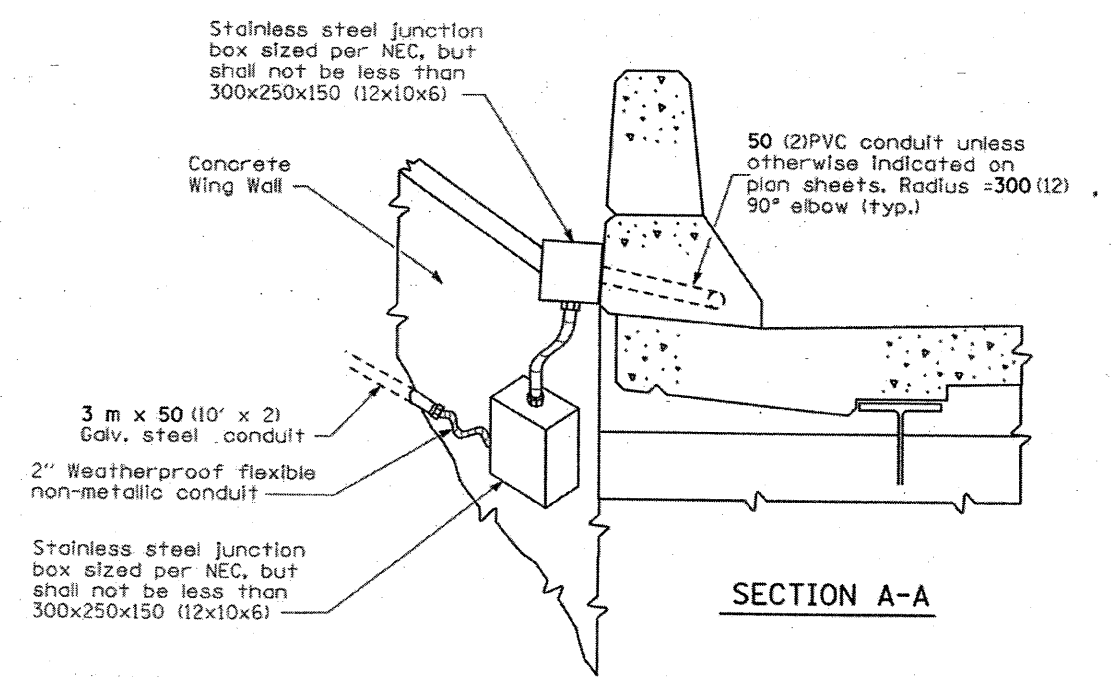
F.A.J. RTE.	SECTION	COUNTY	TOTAL SHEETS	SHEET NO.
FAI 80	50 - BHR	LASALLE	142	61
STA.		TO STA.		
FED. ROAD DIST. NO. 3		ILLINOIS FED. AID PROJECT		



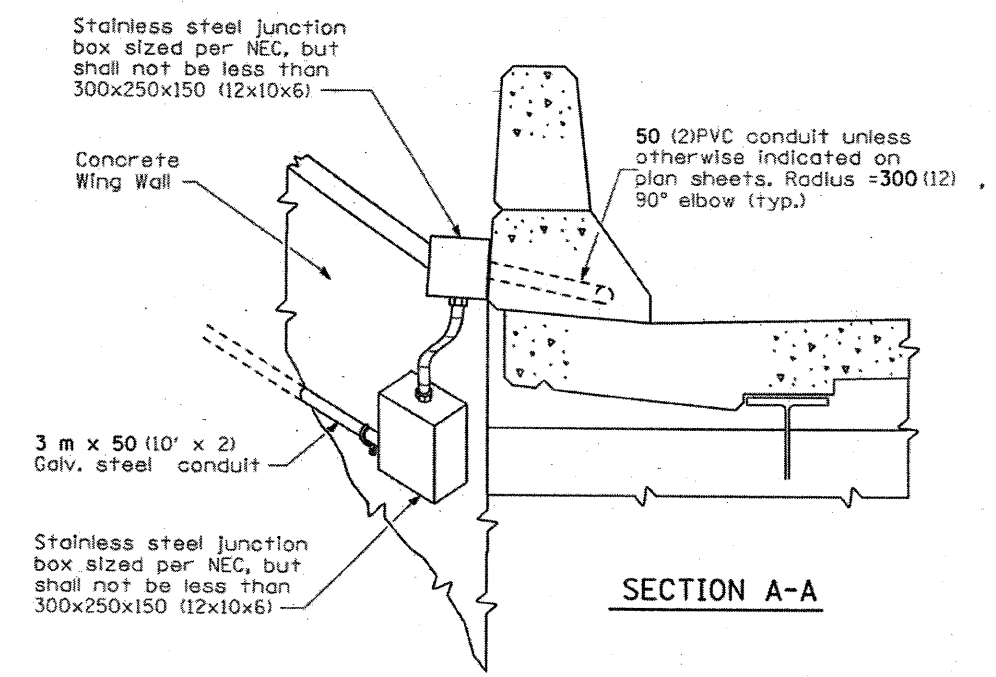
**CONDUIT DETAIL**  
(Integral Abutment)



**CONDUIT DETAIL**  
(Open Abutment)



**SECTION A-A**



**SECTION A-A**

**Note:**  
Flexible conduit (LFNC) shall be resistant to oil, water, chemicals, and UV and shall be suitable for outdoor, direct bury, and extreme cold use according to NEC Art. 356.

All dimensions are in millimeters (inches) unless otherwise shown.

DATE	REVISIONS
7-31-08	Updated

**CONDUIT EXITING  
BRIDGE PARAPET**