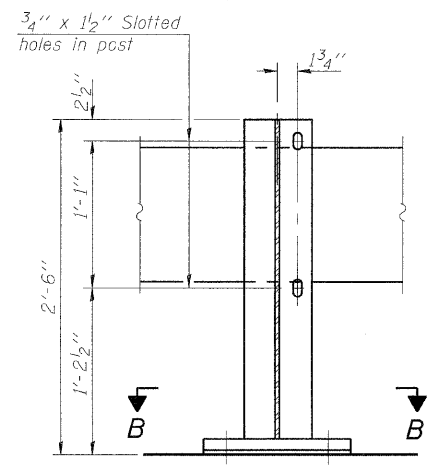
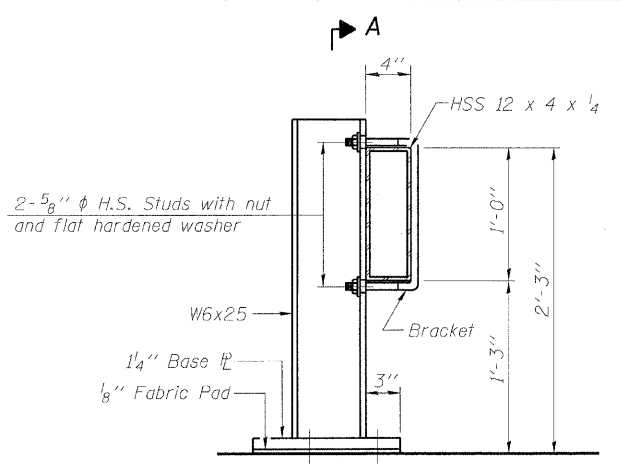


STATE OF ILLINOIS
DEPARTMENT OF TRANSPORTATION

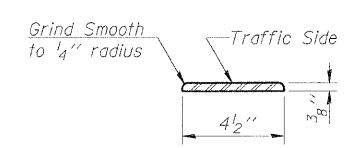
ROUTE NO.	SECTION	COUNTY	TOTAL SHEETS	SHEET NO.	SHEET NO.
FAI 80	50-BHBR	LASALLE	143	65	26 SHEETS
Contract # 66645					



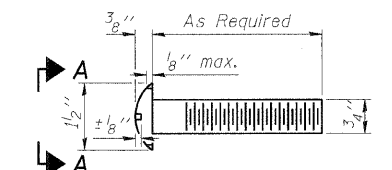
SECTION A-A



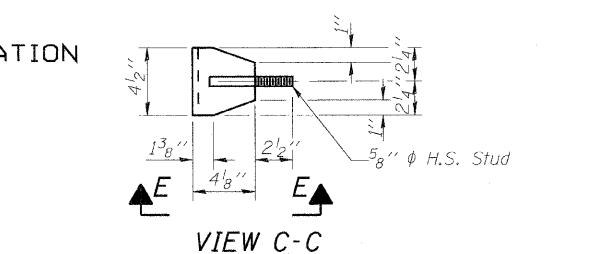
SECTION AT RAIL POST



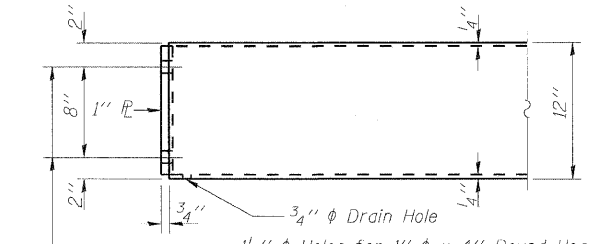
DETAIL A



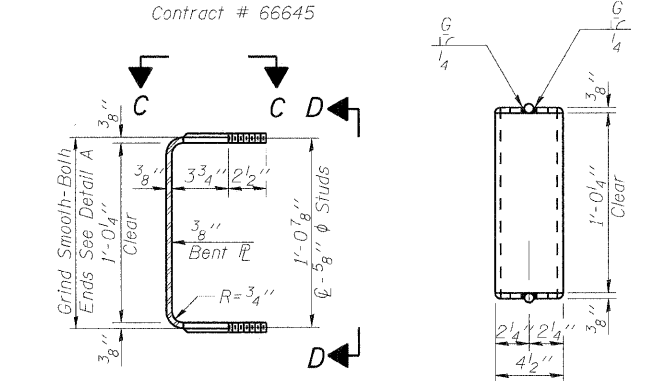
VIEW A-A
ROUND HEAD BOLT



VIEW C-C

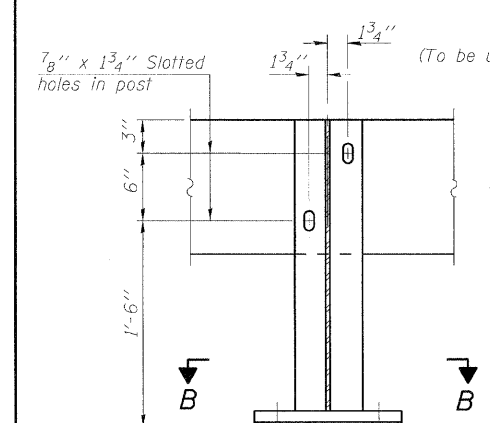


END OF RAIL DETAILS

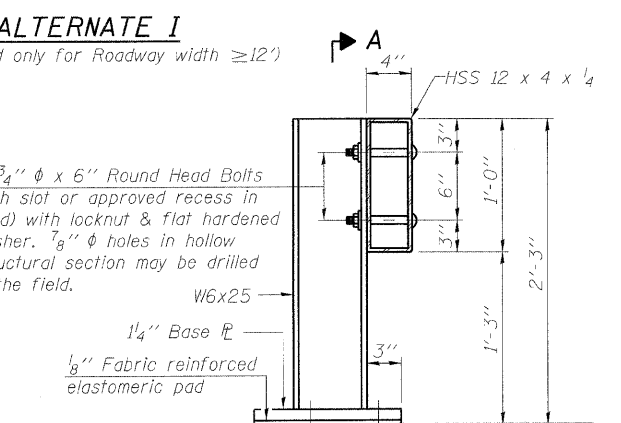


SECTION THRU BRACKET

VIEW D-D



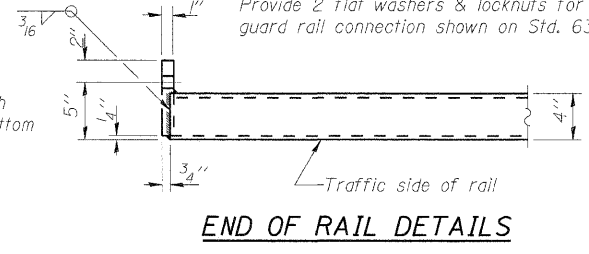
SECTION A-A



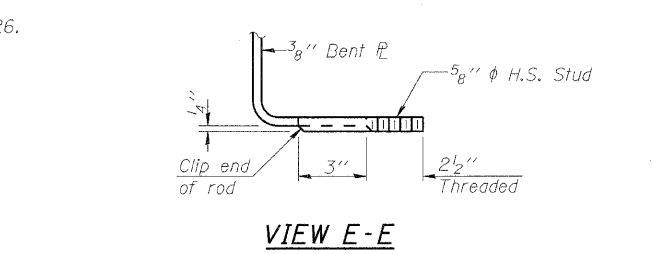
SECTION AT RAIL POST



VIEW A-A
ROUND HEAD BOLT

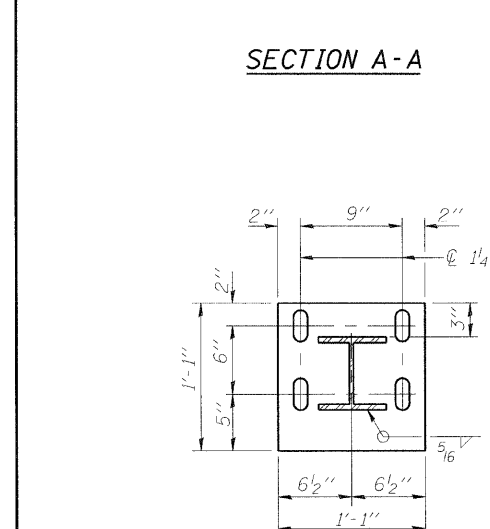


RAIL SPLICE CONNECTION
AT EXPANSION JT.

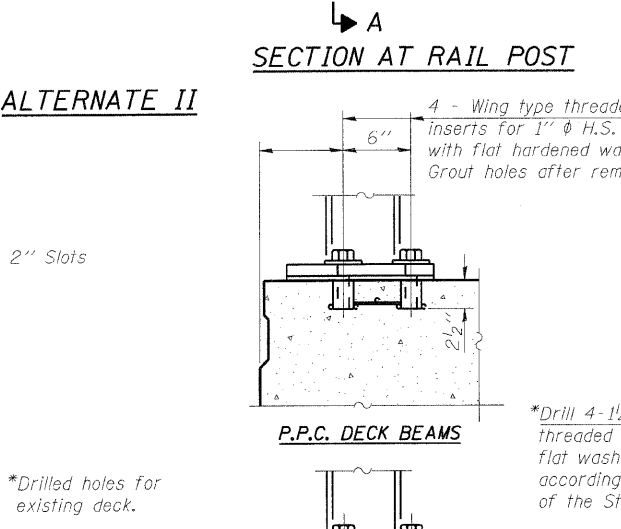


VIEW E-E

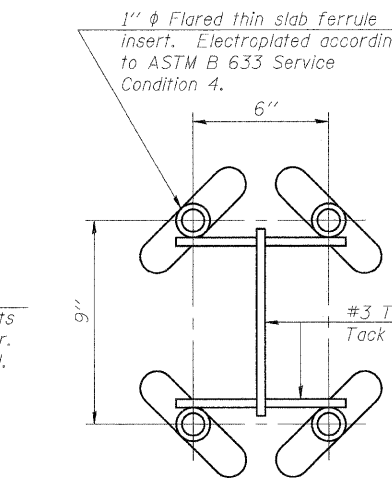
Notes:
The contact surfaces between post flange, rail and inside face of bracket for Alternate I shall be free of all lubricants.
The nut for 5/8 inch high strength studs used in Alternate I to connect bracket to post shall be tightened to a snug fit and given an additional one half turn.



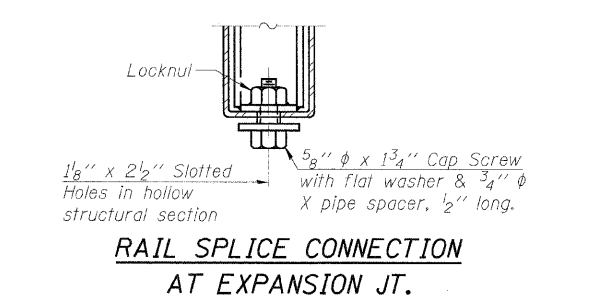
SECTION B-B



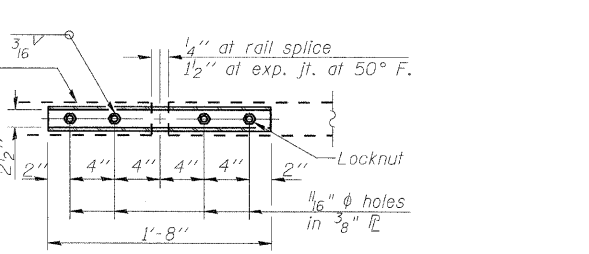
P.P.C. DECK BEAMS



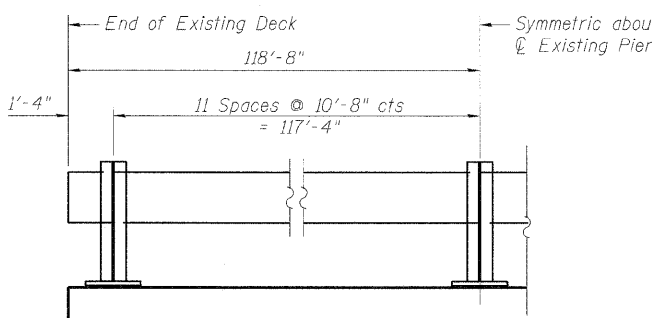
INSERT DETAIL



SECTION AT RAIL SPLICE



PLAN-BOTT. SPLICE
TYPICAL



TEMPORARY BRIDGE RAIL POST SPACING

BILL OF MATERIAL

Item	Unit	Quantity
Steel Railing (Temporary)	Foot	237

TEMPORARY BRIDGE RAIL FOR STAGE CONSTRUCTION

PLANK ROAD OVER
FAI ROUTE 80 (I-80)
SECTION 50-8HBR
LASALLE COUNTY
STATION 3886+74.90
STRUCTURE NO. 050-0249

DESIGNED	- BHS
CHECKED	- BPS
DRAWN	- RRG
CHECKED	- GSP

R-25

11-1-09

(10'-9" Maximum Post Spacing)



PLOT DATE = 2/3/2018
 FILE NAME = g:\projects\20546891\001\roads\VI.BR.R25.dwg
 PLOT SCALE = N/A
 USER NAME = zsegerb