

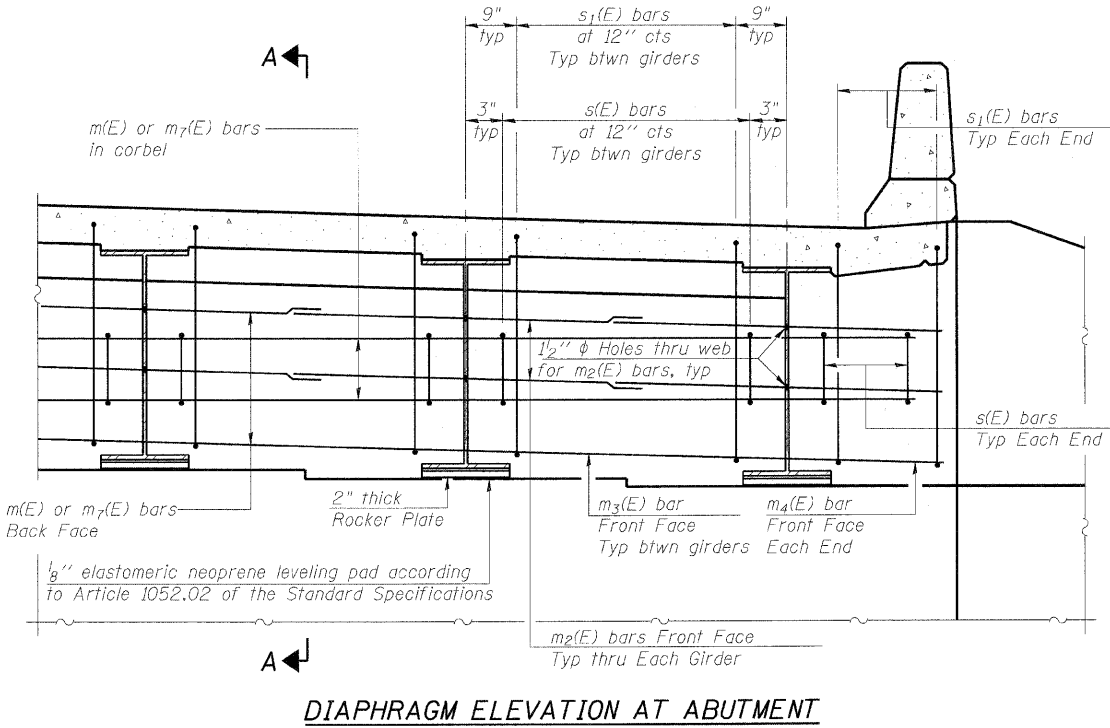
STATE OF ILLINOIS
DEPARTMENT OF TRANSPORTATION

ROUTE NO.	SECTION	COUNTY	TOTAL SHEETS	SHEET NO.
FAI 80	50-8HBR	LASALLE	143	74
FED. ROAD DIST. NO. 7	ILLINOIS	FED. AID PROJECT		

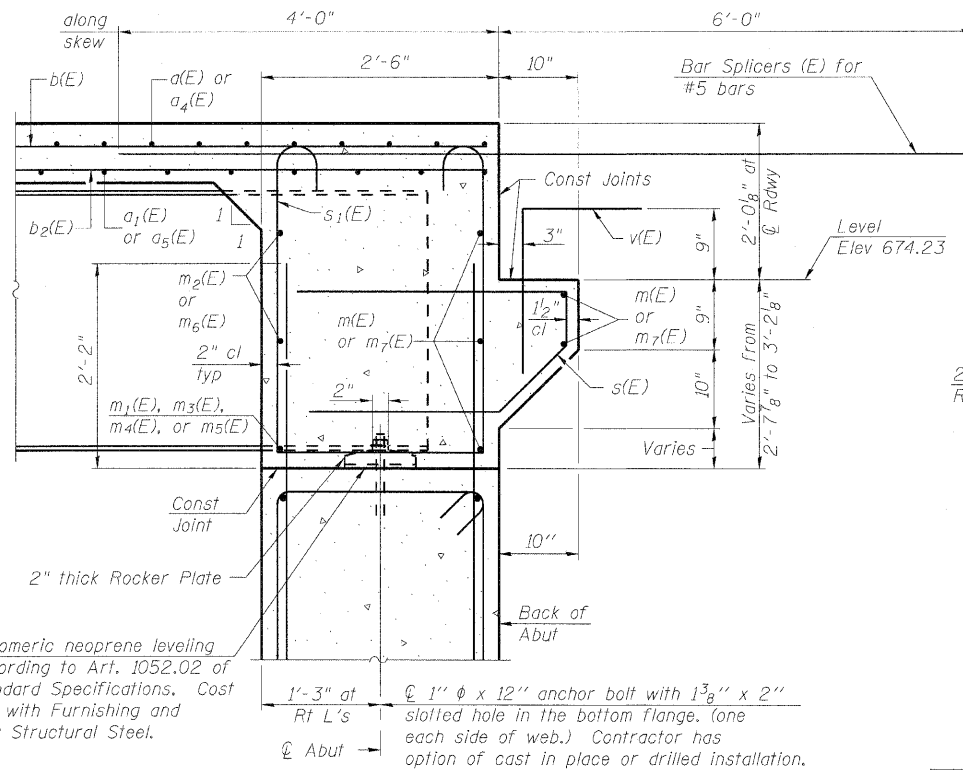
SHEET NO. 13
26 SHEETS
Contract # 66645

**SUPERSTRUCTURE
BILL OF MATERIAL**

Bar	No.	Size	Length	Shape
d(E)	388	#5	24'-5"	—
a ₁ (E)	273	#5	23'-9"	—
a ₂ (E)	388	#6	6'-0"	—
a ₃ (E)	4	#5	28'-10"	—
a ₄ (E)	388	#5	39'-9"	—
a ₅ (E)	273	#5	39'-1"	—
a ₆ (E)	4	#5	46'-11"	—
b(E)	576	#5	31'-7"	—
b ₁ (E)	204	#6	26'-6"	—
b ₂ (E)	427	#5	34'-3"	—
d(E)	496	#5	5'-7"	—
d ₁ (E)	496	#5	7'-10"	—
d ₂ (E)	10	#5	4'-5"	—
d ₃ (E)	25	#6	8'-11"	—
e(E)	112	#4	18'-2"	—
e ₁ (E)	28	#4	19'-8"	—
e ₂ (E)	14	#4	18'-1"	—
e ₃ (E)	14	#4	19'-4"	—
e ₄ (E)	12	#8	34'-5"	—
e ₅ (E)	4	#8	19'-8"	—
e ₆ (E)	12	#4	32'-10"	—
e ₇ (E)	4	#4	19'-8"	—
m(E)	10	#6	29'-0"	—
m ₁ (E)	2	#6	4'-9"	—
m ₂ (E)	36	#6	10'-6"	—
m ₃ (E)	16	#6	7'-2"	—
m ₄ (E)	4	#6	3'-6"	—
m ₅ (E)	2	#6	2'-0"	—
m ₆ (E)	4	#6	7'-6"	—
m ₇ (E)	10	#6	47'-2"	—
s(E)	140	#5	6'-8"	—
s ₁ (E)	122	#4	11'-0"	—
v(E)	134	#5	3'-4"	—
Bridge Deck Grooving	Sq yd		1513	
Protective Coat	Sq yd		1753	
Concrete Superstructure	Cu yd		489.1	
Reinforcement Bars, Epoxy Coated	Pound		105,350	

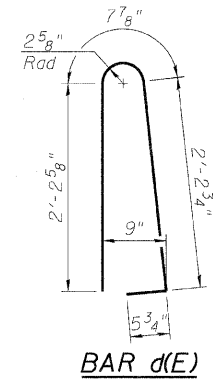


DIAPHRAGM ELEVATION AT ABUTMENT

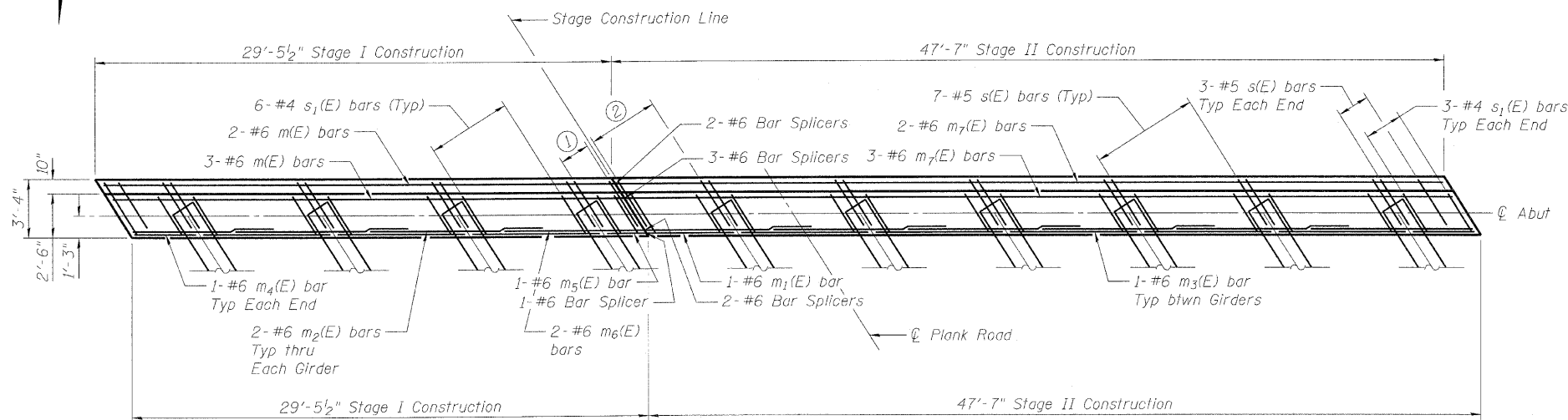


SECTION A-A

Dimensions at right angles to abutment, except as shown.



BAR d(E)

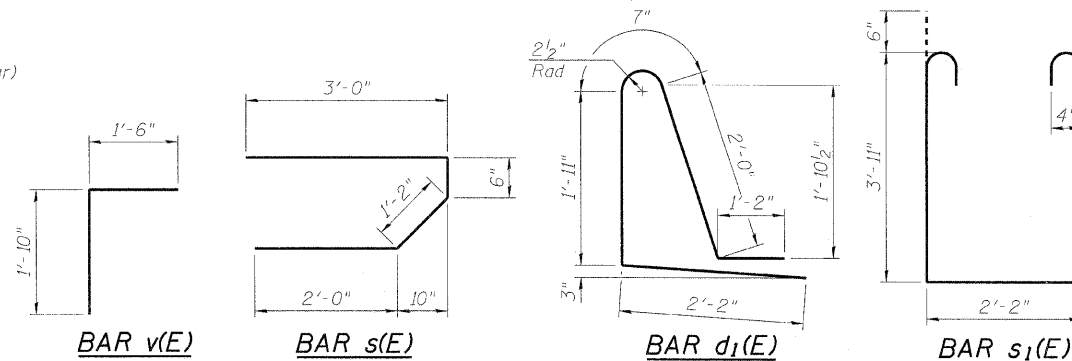


DIAPHRAGM PLAN

(South Abutment Shown, North Abutment Similar)

- ① 3- #5 s(E) bars, 2- #5 s1(E) bars
- ② 5- #5 s(E) bars, 5- #5 s1(E) bars

DESIGNED	- BHS
CHECKED	- BPS
DRAWN	- RRG
CHECKED	- GSP



LEGEND
EF = Each Face
MINIMUM BAR LAPS
#6 = 2'-9"

**SUPERSTRUCTURE DETAILS
(2 of 2)**

PLANK ROAD OVER
FAI ROUTE 80 (I-80)
SECTION 50-8HBR
LASALLE COUNTY
STATION 3886+74.90
STRUCTURE NO. 050-0249

Notes:
Concrete in diaphragm is included with Concrete Superstructure.
For rocker plate detail see Sheet No. 18.

PLOT DATE = 2/23/2018
FILE NAME = c:\p\project\2054685\081\road\PL BR.DEC3.dwg
PLOT SCALE = N/A
USER NAME = zhangrb