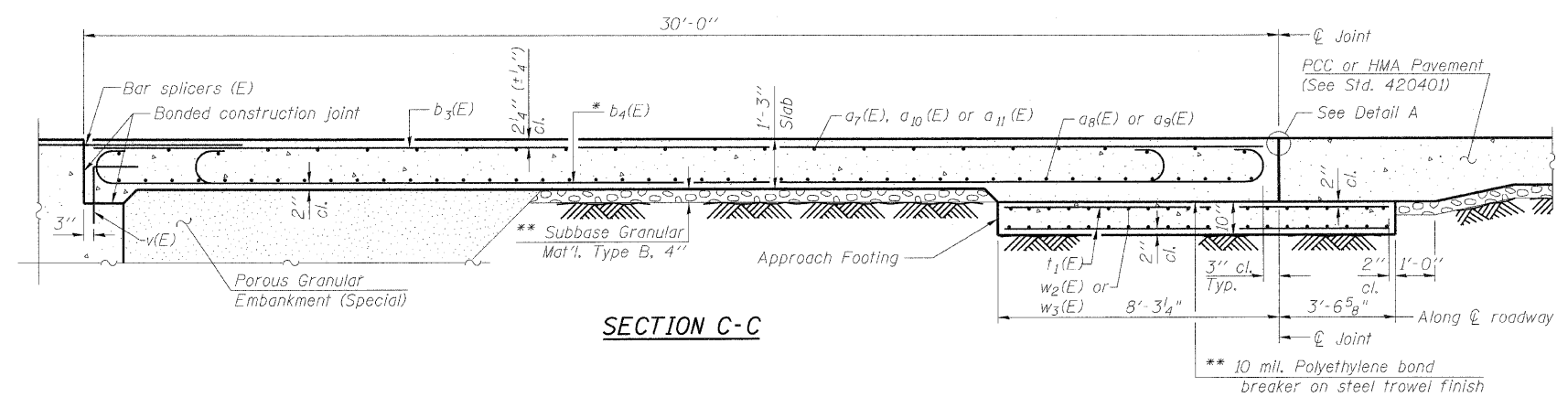


STATE OF ILLINOIS  
DEPARTMENT OF TRANSPORTATION

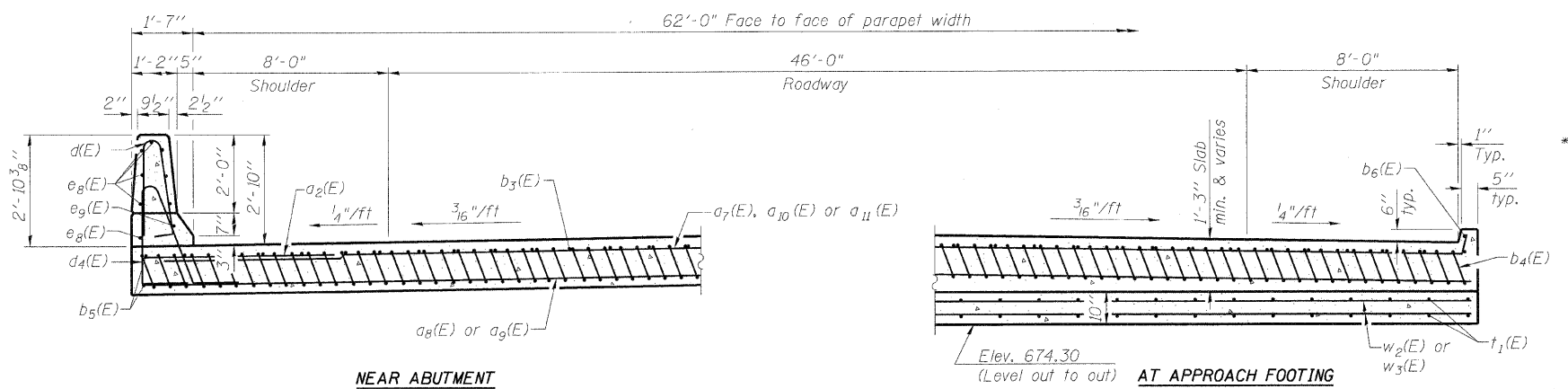
ROUTE NO.	SECTION	COUNTY	TOTAL SHEETS	SHEET NO.	SHEET NO. 15
FAI 80	50 - 8HBR	LASALLE	143	76	26 SHEETS
FED. ROAD DIST. NO. 7		ILLINOIS	FED. AID PROJECT		

Contract # 66645

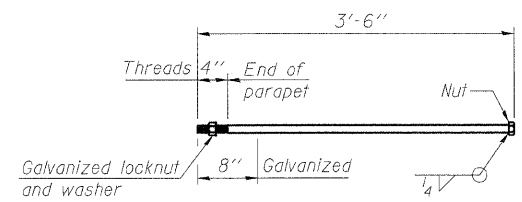
Notes:  
See sheet 14 of 26 for Detail A and View B-B.  
Approach slab and parapet concrete shall be paid for as Concrete Superstructure.  
Approach footing concrete shall be paid for as Concrete Structures.  
Reinforcement shall be paid for as Reinforcement Bars, Epoxy Coated.  
For v(E) bar details, see sheet 13 of 26.  
The approach footing maximum applied service bearing pressure (Qmax) = 2.0 ksf.  
For bar splicer details, see sheet 22 of 26.  
Cost of excavation for approach footing included with Concrete Structures.  
For Porous Granular Embankment (Special) and drainage treatment details, see sheet 2 of 26.



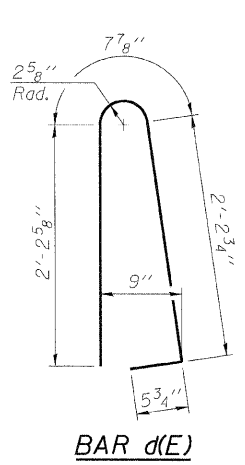
SECTION C-C



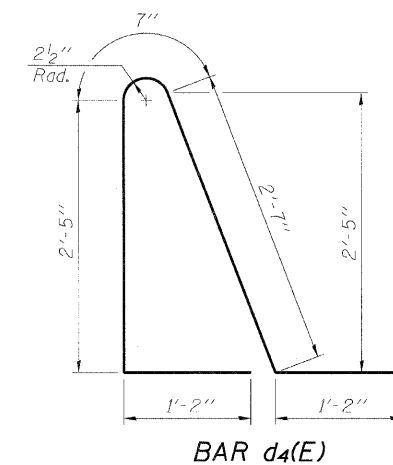
SECTION D-D  
(See Plan for dimensions not shown)



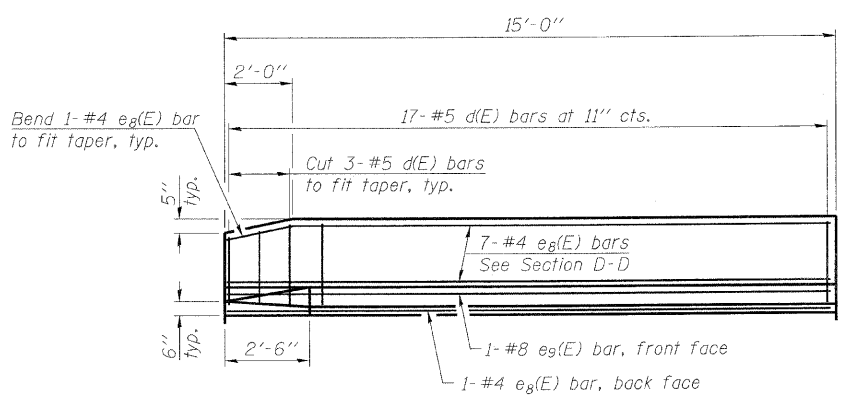
1" ANCHOR BOLT  
(Cost included with Concrete Superstructure)



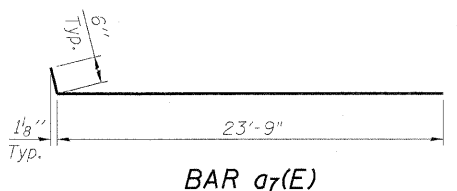
BAR d(E)



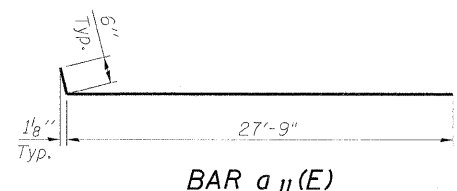
BAR d4(E)



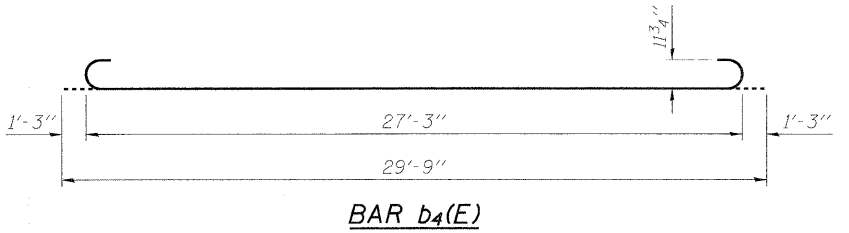
VIEW E-E



BAR a7(E)



BAR a11(E)



BAR b4(E)

\* Tilt #9 b4(E) bars as required to maintain clearance.  
\*\* Cost included with Concrete Superstructure.

TWO APPROACHES  
BILL OF MATERIAL

Bar	No.	Size	Length	Shape
a2(E)	48	#6	6'-0"	—
a7(E)	50	#4	24'-3"	—
a8(E)	184	#5	24'-1"	—
a9(E)	92	#5	27'-10"	—
a10(E)	50	#4	23'-10"	—
a11(E)	50	#4	28'-3"	—
b3(E)	130	#4	29'-8"	—
b4(E)	306	#9	29'-9"	—
b5(E)	8	#4	14'-8"	—
b6(E)	4	#4	14'-7"	—
d(E)	68	#5	5'-7"	—
d4(E)	68	#5	7'-11"	—
e8(E)	32	#4	14'-8"	—
e9(E)	4	#8	14'-8"	—
t1(E)	130	#4	11'-6"	—
w2(E)	160	#5	24'-1"	—
w3(E)	80	#5	27'-10"	—
Concrete Structures	Cu yd		46.0	
Concrete Superstructure	Cu yd		196.8	
Bridge Deck Grooving	Sq Yd		400	
Protective Coat	Sq yd		426	
Reinforcement Bars, Epoxy Coated	Pound		52,690	

BRIDGE APPROACH  
SLAB DETAILS (2 of 2)  
PLANK ROAD OVER  
FAI ROUTE 80 (I-80)  
SECTION 50-8HBR  
LASALLE COUNTY  
STATION 3886+74.90  
STRUCTURE NO. 050-0249

DESIGNED	- BPS
CHECKED	- GSP
DRAWN	- BPS
CHECKED	- GSP



PLOT DATE = 2/3/2010  
FILE NAME = g:\pro\mca\2054089\_081\cadd\PLBR\_APP2.dwg  
PLOT SCALE = N/A  
USER NAME = zhangyb