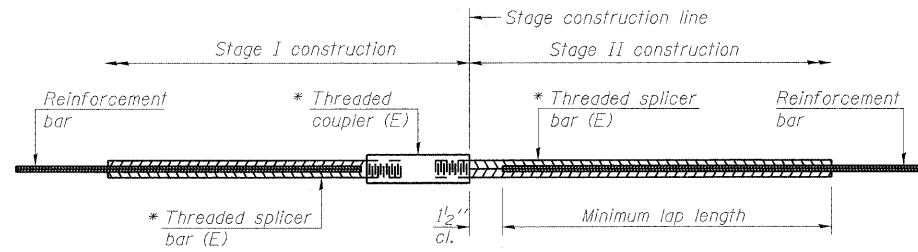


STATE OF ILLINOIS  
DEPARTMENT OF TRANSPORTATION

ROUTE NO.	SECTION	COUNTY	SHEETS	SHEET NO.
FAI 80	50 - 8HBR	LASALLE	143	83
FED. ROAD DIST. NO. 7		ILLINOIS	FED. AID PROJECT	
Contract # 66645				

SHEET NO. 22  
26 SHEETS



**STANDARD BAR SPLICER ASSEMBLY**

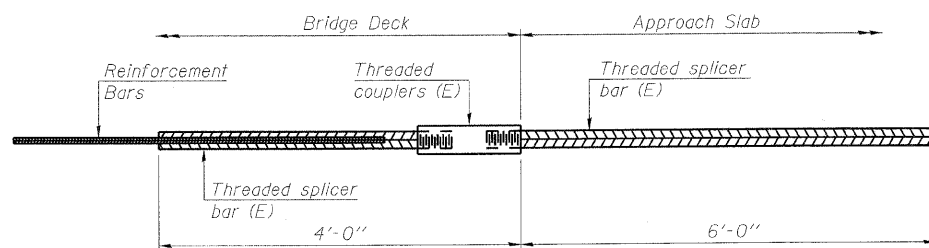
Bar size to be spliced	Minimum Lap Lengths			
	Table 1	Table 2	Table 3	Table 4
3, 4	1'-5"	1'-11"	2'-1"	2'-4"
5	1'-9"	2'-5"	2'-7"	2'-11"
6	2'-1"	2'-11"	3'-1"	3'-6"
7	2'-9"	3'-10"	4'-2"	4'-8"
8	3'-8"	5'-1"	5'-5"	6'-2"
9	4'-7"	6'-5"	6'-10"	7'-9"

Table 1: Black bar, 0.8 Class C  
Table 2: Black bar, Top bar lap, 0.8 Class C  
Table 3: Epoxy bar, 0.8 Class C  
Table 4: Epoxy bar, Top bar lap, 0.8 Class C

Threaded splicer bar length = min. lap length + 1/2" + thread length

\* Epoxy not required on Bar Splicer Assembly components used in conjunction with black bars.

Location	Bar size	No. assemblies required	Table for minimum lap length
Deck	5	665	Table 3
S Abut Diaphragm	6	8	Table 4
N Abut Diaphragm	6	8	Table 4
South Abutment	7	10	Table 4
North Abutment	7	10	Table 4
Pier	5	26	Table 4
Pier	6	10	Table 4
Pier	7	11	Table 4
Pier	10	12	Table 4
N Approach Slab	4	25	Table 4
N Approach Slab	5	86	Table 3
S Approach Slab	4	25	Table 4
S Approach Slab	5	86	Table 3

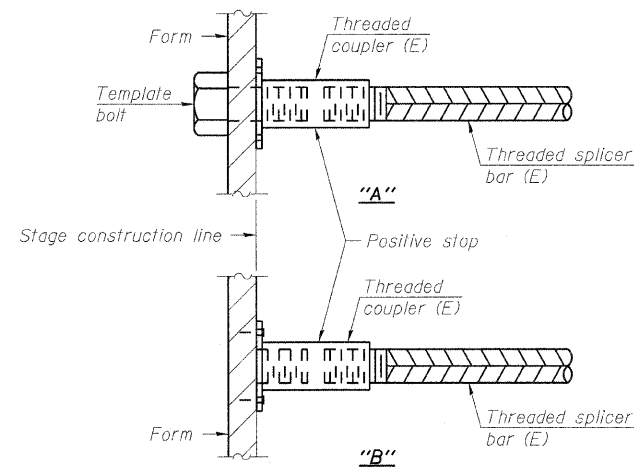


**BAR SPLICER ASSEMBLY FOR #5 BAR ON INTEGRAL OR SEMI-INTEGRAL ABUTMENTS**

DESIGNED	- BHS
CHECKED	- BPS
DRAWN	- RRG
CHECKED	- GSP

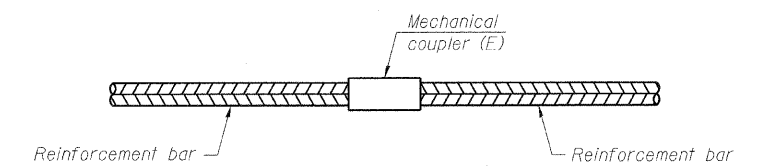
No. required = 132

BSD-1 11-1-09



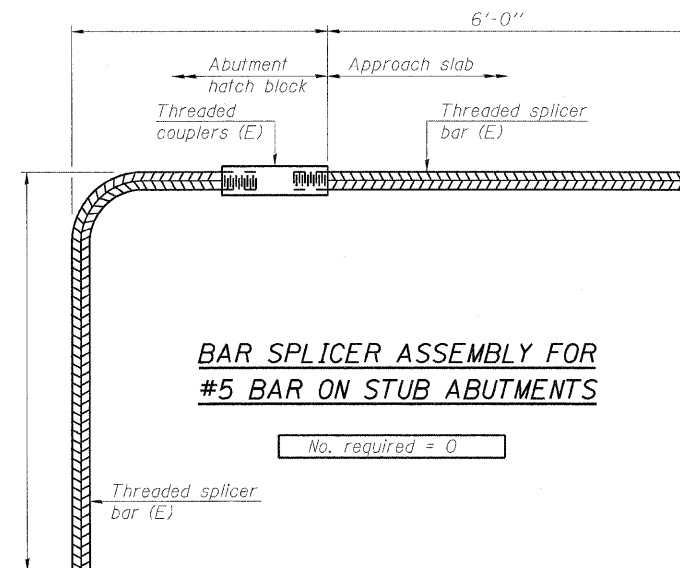
**INSTALLATION AND SETTING METHODS**

"A" : Set bar splicer assembly by means of a template bolt.  
"B" : Set bar splicer assembly by nailing to wood forms or cementing to steel forms.  
(E) : Indicates epoxy coating.



**STANDARD MECHANICAL SPLICER**

Location	Bar size	No. assemblies required



**BAR SPLICER ASSEMBLY FOR #5 BAR ON STUB ABUTMENTS**

No. required = 0

**NOTES**

Splicer bars shall be deformed with threaded ends and have a minimum 60 ksi yield strength.  
All reinforcement shall be lapped and tied to the splicer bars.  
Bar splicer assemblies shall be epoxy coated according to the requirements for reinforcement bars. See Section 508 of the Standard Specifications.  
See special provision for Mechanical Splicers.  
See approved list of bar splicer assemblies and mechanical splicers for alternatives.

**BAR SPLICER ASSEMBLY AND MECHANICAL SPLICER DETAILS**

PLANK ROAD OVER  
FAI ROUTE 80 (I-80)  
SECTION 50-8HBR  
LASALLE COUNTY  
STATION 3886+74.90  
STRUCTURE NO. 050-0249

PLOT DATE = 2/2/2010  
FILE NAME = g:\p\proj\20548851\001\load\PLR\_BSD.dwg  
PLOT SCALE = N/A  
USER NAME = zseguib