

STATE OF ILLINOIS
DEPARTMENT OF TRANSPORTATION

ROUTE NO.	SECTION	COUNTY	TOTAL SHEETS	SHEET NO.
FAI 80	50 - 8HBR	LASALLE	143	98
FED. ROAD DIST. NO. 7		ILLINOIS	FED. AID PROJECT	

Contract # 66645

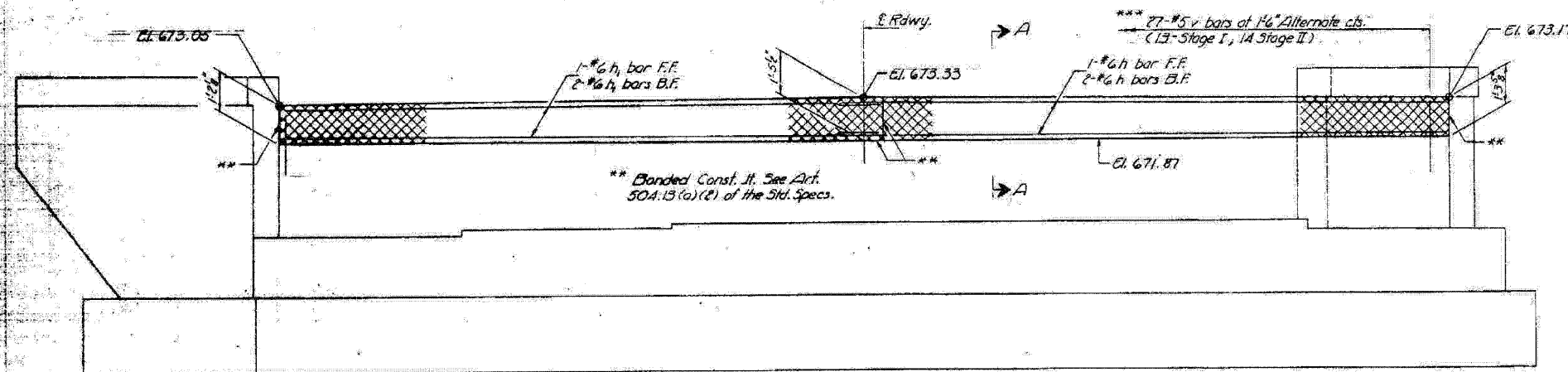
Cross hatched area to be poured after superstructure
has been removed. Quantity of Class X Concrete
included with superstructure.

STATE OF ILLINOIS
DEPARTMENT OF TRANSPORTATION

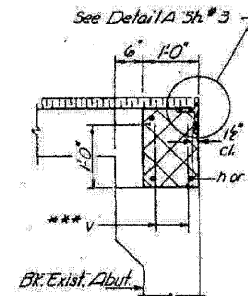
ROUTE NO.	SECTION	COUNTY	TOTAL SHEETS	SHEET NO.
FAI 80	50 - 8HBR	LASALLE	143	98
FED. ROAD DIST. NO. 7		ILLINOIS	FED. AID PROJECT	

SHEET NO. 5

8 SHEETS

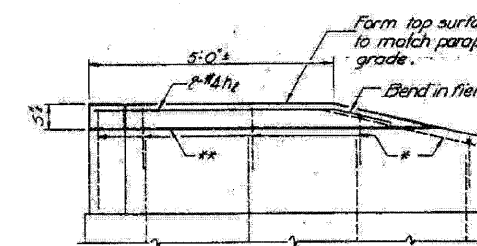


ELEVATION
(End Posts not shown)



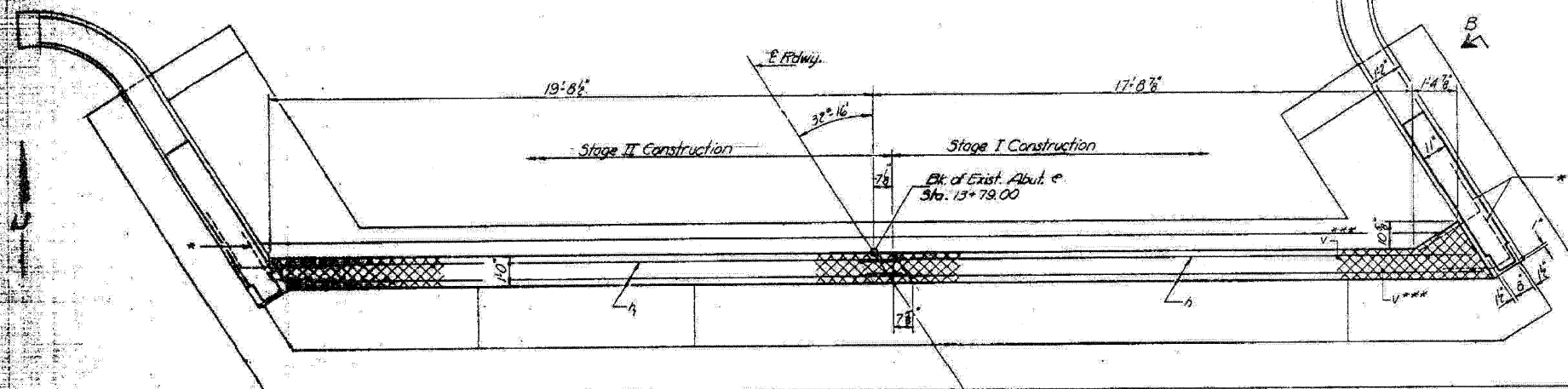
SEC. A-A

*** Drill 6" x 1'-0" hole, fill 1/2 full with epoxy grout before placement of v bars. See Special Provisions for epoxy grout.

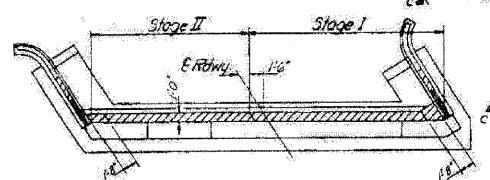


VIEW B-B
(End Post)

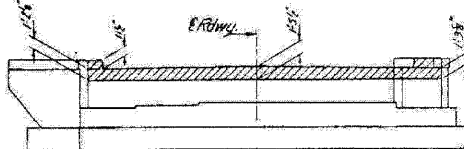
* Existing reinforcement extending into the removal area shall be cleaned, straightened and incorporated into the new construction. Cost incidental.



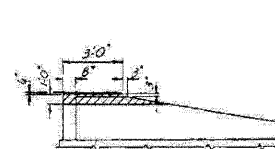
PLAN



PLAN



ELEVATION
(End Posts not shown)



VIEW C-C
(End Post)

BILL OF MATERIAL

Bar	No.	Size	Length	Shape
h	3	#6	21'-0"	
h	3	#6	20'-0"	
h	2	#4	7'-0"	
v	27	#5	2'-0"	
Reinforcement Bars		Lb.	260	
Class X Concrete		Cu/Yd	0.2	
Concrete Removal		Cu/Yd	3.0	

NORTH ABUTMENT
FAI RT. 80, SEC. 50-8HBR
LA SALLE COUNTY
STA. 496+22.50

DESIGNED: *[Signature]*
CHECKED: *[Signature]*
APPROVED: *[Signature]*
DATE: May 5, 1985

EXISTING PLANS - 1985

PLANK ROAD OVER
FAI ROUTE 80 (I-80)
SECTION 50-8HBR
LASALLE COUNTY
STATION 3886+74.90
STRUCTURE NO. 050-0249

FOR INFORMATION ONLY