

STATE OF ILLINOIS
DEPARTMENT OF TRANSPORTATION

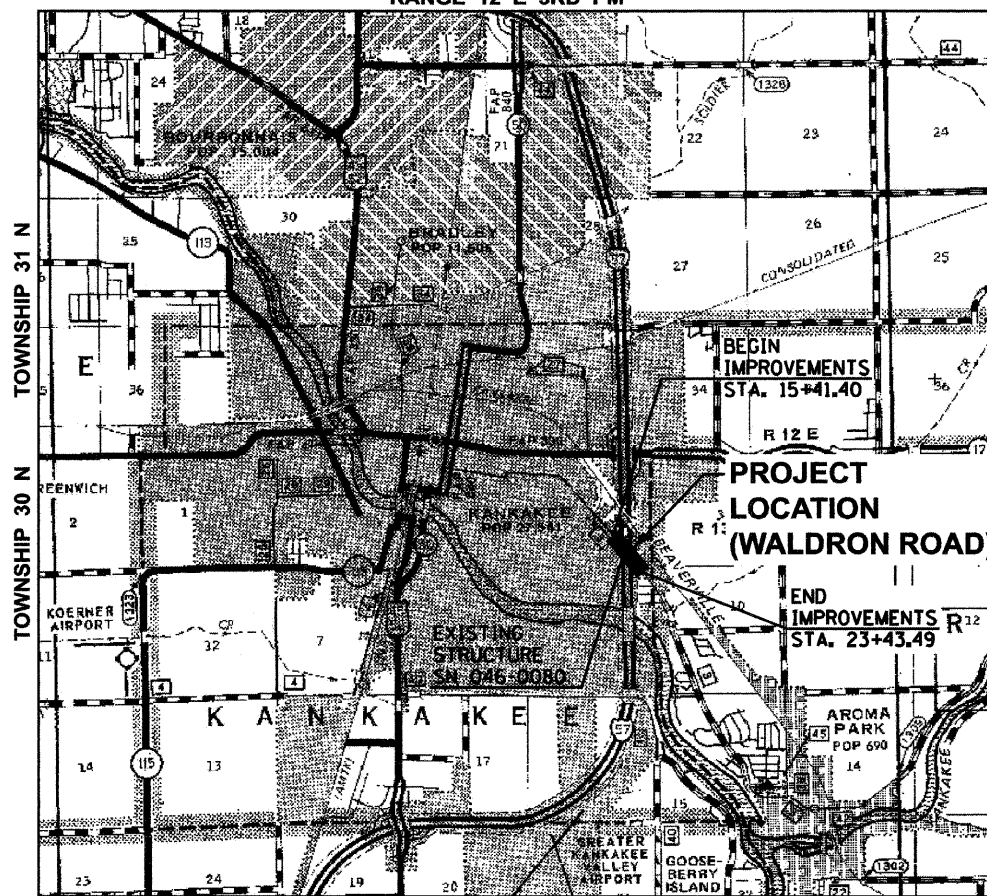
DIVISION OF HIGHWAYS
**PROPOSED
HIGHWAY PLANS**

FAI ROUTE 57
SECTION [(46-3)HB-6]I

KANKAKEE COUNTY
JOB NO. C-93-062-10

THE PROJECT CONSISTS OF ADDING STEEL RAILING TO THE EXISTING BRIDGE CURB, APPROACH GUARDRAIL REMOVAL AND REPLACEMENT, REPAIR OF CONCRETE AND DECK REPAIR.

RANGE 12 E 3RD PM



LOCATION MAP

GROSS LENGTH OF IMPROVEMENT = 802' (0.152 MILES)
NET LENGTH OF IMPROVEMENT = 802' (0.152 MILES)

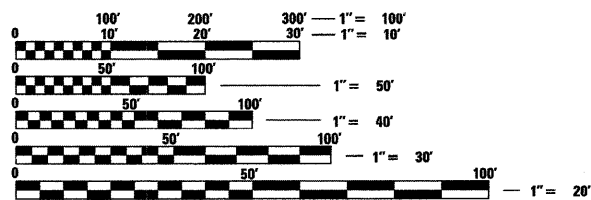
F.A.I. RTE.	SECTION	COUNTY	TOTAL SHEETS	SHEET NO.
57	[(46-3)HB-6]I	KANKAKEE	1	8
FED. ROAD DIST. NO.	ILLINOIS	CONTRACT NO. 66A01		

INDEX OF SHEETS

- COVER SHEET
- GENERAL NOTES, TYPICAL SECTION & SUMMARY OF QUANTITIES
- PLAN & PROFILE
- BRIDGE PLANS
- DETAILS

HIGHWAY STANDARDS

- | | |
|-----------|--|
| 000001-05 | STANDARD SYMBOLS, ABBREVIATIONS AND PATTERNS |
| 001006 | DECIMAL OF AN INCH AND OF A FOOT |
| 630001-08 | STEEL PLATE BEAM GUARDRAIL |
| 630301-05 | SHOULDER WIDENING FOR TYPE 1 (SPECIAL) GUARDRAIL TERMINALS |
| 631032-05 | TRAFFIC BARRIER TERMINAL, TYPE 6A |
| 635001-01 | DELINEATORS |
| 635006-03 | REFLECTOR AND TERMINAL MARKER PLACEMENT |
| 635011-02 | REFLECTOR MARKER AND MOUNTING DETAILS |
| 701001-02 | OFF-ROAD OPERATIONS, 2L, 2W, MORE THAN 15' (4.5m) AWAY FROM EDGE OF PAVEMENT |
| 701006-03 | OFF-ROAD OPERATIONS, 2L, 2W, 15' (4.5m) TO 24' (600 mm) AWAY FROM EDGE OF PAVEMENT |
| 701400-04 | APPROACH TO LANE CLOSURE FREEWAY/EXPRESSWAY |
| 701406-05 | LANE CLOSURE, FREEWAY/EXPRESSWAY, DAY OPERATIONS ONLY |
| 701501-05 | URBAN LANE CLOSURE, 2L, 2W UNDIVIDED |
| 701901-01 | TRAFFIC CONTROL DEVICES |



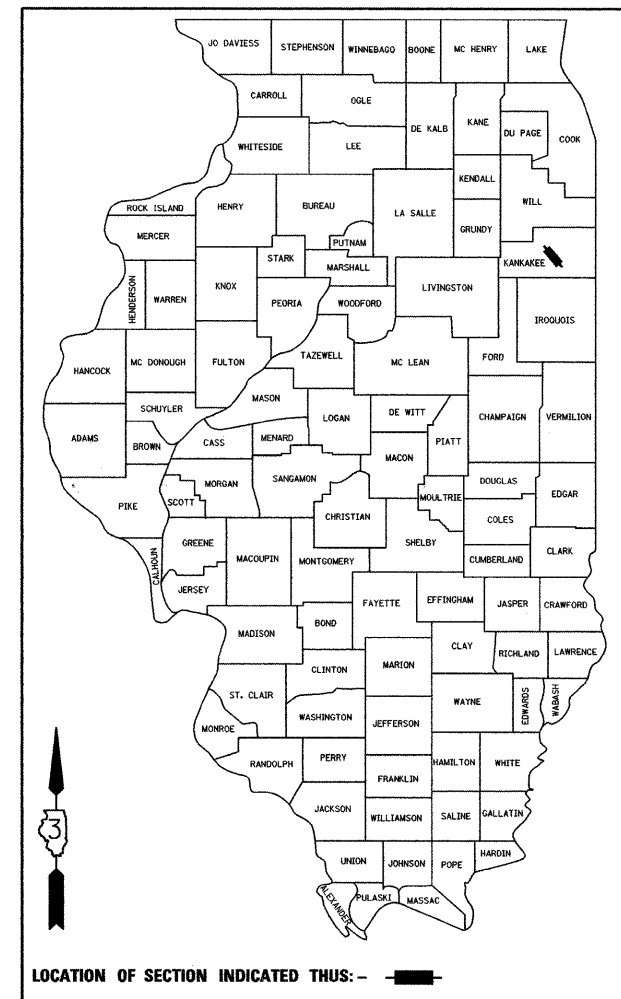
FULL SIZE PLANS HAVE BEEN PREPARED USING STANDARD ENGINEERING SCALES. REDUCED SIZED PLANS WILL NOT CONFORM TO STANDARD SCALES. IN MAKING MEASUREMENTS ON REDUCED PLANS, THE ABOVE SCALES MAY BE USED.

J.U.L.I.E.
JOINT UTILITY LOCATION INFORMATION FOR EXCAVATION
1-800-892-0123
OR 811

PROJECT ENGINEER: JOE KANNEL
UNIT CHIEF: PATRICK BRABOY

CONTRACT NO. 66A01

D-93-023-10



LOCATION OF SECTION INDICATED THUS: [Symbol]

WALDRON ROAD
FUNCTIONAL CLASSIFICATION: MINOR ARTERIAL
ADT = 6200 (2007)



N.T.S.

1/15/2010
date
JAMES K. CLINARD
LICENSED PROFESSIONAL ENGINEER
NO. 062-041793
STATE OF ILLINOIS
expires 11-30-2011
signature
PROFESSIONAL DESIGN FIRM
LICENSE NO. 184-001717

STATE OF ILLINOIS
DEPARTMENT OF TRANSPORTATION
DIVISION OF HIGHWAYS
SUBMITTED: Jan 19, 2010
George Ryan
DEPUTY DIRECTOR OF HIGHWAYS, REGION ENGINEER
March 19, 2010
Scott E. Stett, P.E.
Acting ENGINEER OF DESIGN AND ENVIRONMENT
March 19, 2010
Christine M. Reed
DIRECTOR OF HIGHWAYS, CHIEF ENGINEER

PRINTED BY THE AUTHORITY
OF THE STATE OF ILLINOIS

CHAMLIN & ASSOCIATES
PERU ILLINOIS MORRIS