

F.A.I. RTE.	SECTION	COUNTY	TOTAL SHEETS	SHEET NO.
80	(50-5,6&32-1,2)RS-3	*	76	1
* LASALLE & GRUNDY		ILLINOIS	CONTRACT NO. 66A08	

STATE OF ILLINOIS  
DEPARTMENT OF TRANSPORTATION  
DIVISION OF HIGHWAYS  
**PROPOSED  
HIGHWAY PLANS**

**FAI ROUTE 80 (I-80)  
SECTION (50-5,6 & 32-1,2)RS-3  
PROJECT ACIM-080-3(132)097  
RESURFACING AND PATCHING  
LASALLE & GRUNDY COUNTIES**

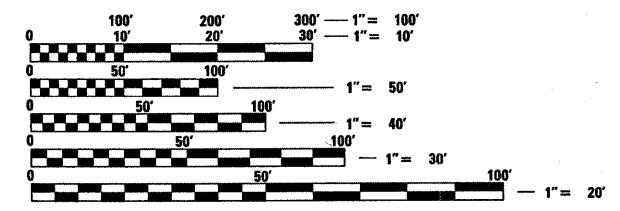
C-93-081-10

**INDEX OF SHEETS**

- 1 COVER SHEET
- 2 GENERAL NOTES
- 3-6 SUMMARY OF QUANTITIES
- 7-8 TYPICAL SECTIONS
- 9-15 SCHEDULES
- 16-17 STAGE CONSTRUCTION TYPICAL SECTIONS
- 18-33 PLAN SHEETS
- 34-35 TRAFFIC COUNTER DETAILS
- 36 CRASH WALL DETAILS
- 37-43 DETAILS
- 44 PAVEMENT MARKING DETAILS
- 45 STANDARD 701400 (SPECIAL)
- 46 ALTERNATE ROUTE MAP
- 47-54 PAVEMENT CORE RESULTS
- 55-76 CROSS SECTIONS

**STANDARDS**

- 000001-05 STANDARD SYMBOLS, ABBREVIATIONS AND PATTERNS
- 001006 DECIMAL OF AN INCH AND OF A FOOT
- 280001-05 TEMPORARY EROSION CONTROL SYSTEMS
- 420701-02 PAVEMENT FABRIC
- 442101-07 CLASS B PATCHES
- 542546-01 FLUSH INLET BOX FOR MEDIAN
- 601001-03 SUB-SURFACE DRAINS
- 601101-01 CONCRETE HEADWALL FOR PIPE DRAINS
- 630001-08 STEEL PLATE BEAM GUARDRAIL
- 630101-08 GUARDRAIL MOUNTED ON EXISTING CULVERTS
- 630201-06 PCC/HMA STABILIZATION AT STEEL PLATE BEAM GUARDRAIL
- 630301-05 SHOULDER WIDENING FOR TYPE 1 (SPECIAL) GUARDRAIL TERMINALS
- 631011-06 TRAFFIC BARRIER TERMINAL, TYPE 2
- 631026-05 TRAFFIC BARRIER TERMINAL, TYPE 5
- 631033-03 TRAFFIC BARRIER TERMINAL, TYPE 6B
- 635001-01 DELINEATORS
- 635006-03 REFLECTOR AND TERMINAL MARKER PLACEMENT
- 635011-02 REFLECTOR MARKER AND MOUNTING DETAILS
- 642001-01 SHOULDER RUMBLE STRIPS
- 665001-02 WOVEN WIRE FENCE
- 701101-02 OFF-ROAD OPERATIONS MULTILANE, 15' (4.5 m) TO 24" (600 mm) FROM PAVEMENT EDGE
- 701106-02 OFF-ROAD OPERATIONS, MULTILANE, MORE THAN 15' (4.5 m) AWAY
- 701400-04 APPROACH TO LANE CLOSURE, FREEWAY/EXPRESSWAY
- 701401-05 LANE CLOSURE, FREEWAY/EXPRESSWAY
- 701411-06 LANE CLOSURE, MULTILANE, AT ENTRANCE OR EXIT RAMP FOR SPEEDS ≥ 45 MPH
- 701426-03 LANE CLOSURE, MULTILANE INTERMITTENT OR MOVING OPERATION, FOR SPEEDS ≥ 45 MPH
- 701456 PARTIAL EXIT RAMP CLOSURE FREEWAY/EXPRESSWAY
- 701901-01 TRAFFIC CONTROL DEVICES
- 720011-01 METAL POSTS FOR SIGNS, MARKERS AND DELINEATORS
- 781001-03 TYPICAL APPLICATIONS RAISED REFLECTIVE PAVEMENT MARKERS
- 814001-02 HANDHOLES
- 878001-08 CONCRETE FOUNDATION DETAILS
- 886001-01 DETECTOR LOOP INSTALLATIONS
- 886006-01 TYPICAL LAYOUT FOR DETECTION LOOPS



FULL SIZE PLANS HAVE BEEN PREPARED USING STANDARD ENGINEERING SCALES. REDUCED SIZED PLANS WILL NOT CONFORM TO STANDARD SCALES. IN MAKING MEASUREMENTS ON REDUCED PLANS, THE ABOVE SCALES MAY BE USED.

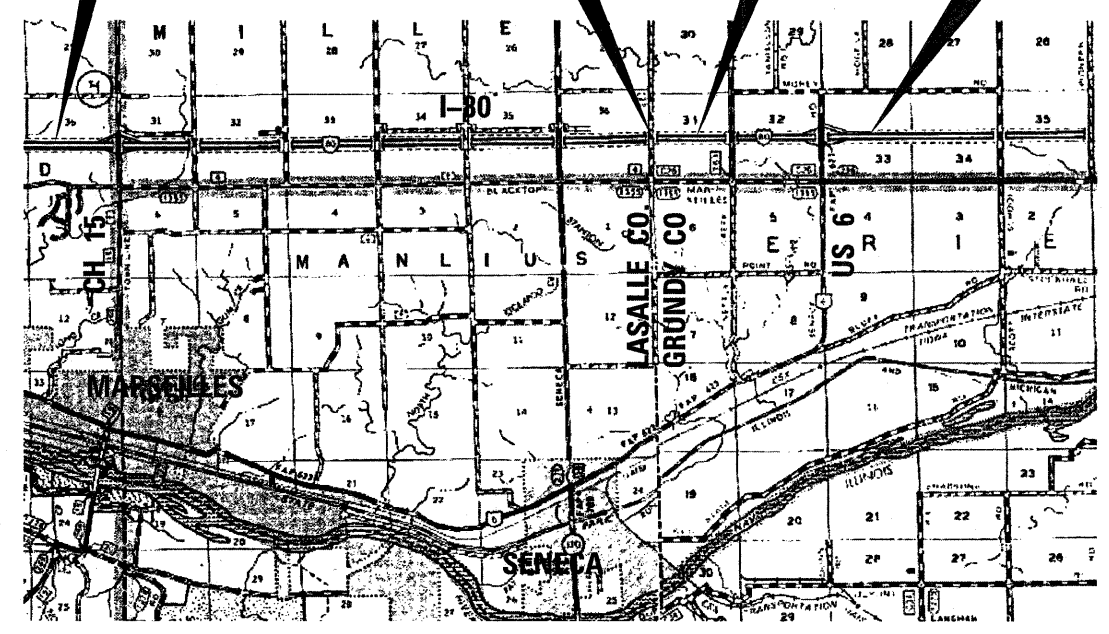
J.U.L.I.E.  
JOINT UTILITY LOCATION INFORMATION FOR EXCAVATION  
1-800-892-0123  
OR 811

**START PROJECT  
STA. 810 + 00**

**COUNTY LINE  
STA. 1149 + 98.56**

**STATION EQUATION  
STA. 1155 + 51.21 BK =  
STA. 724 + 16.00 AH**

**END PROJECT  
STA. 846 + 97**

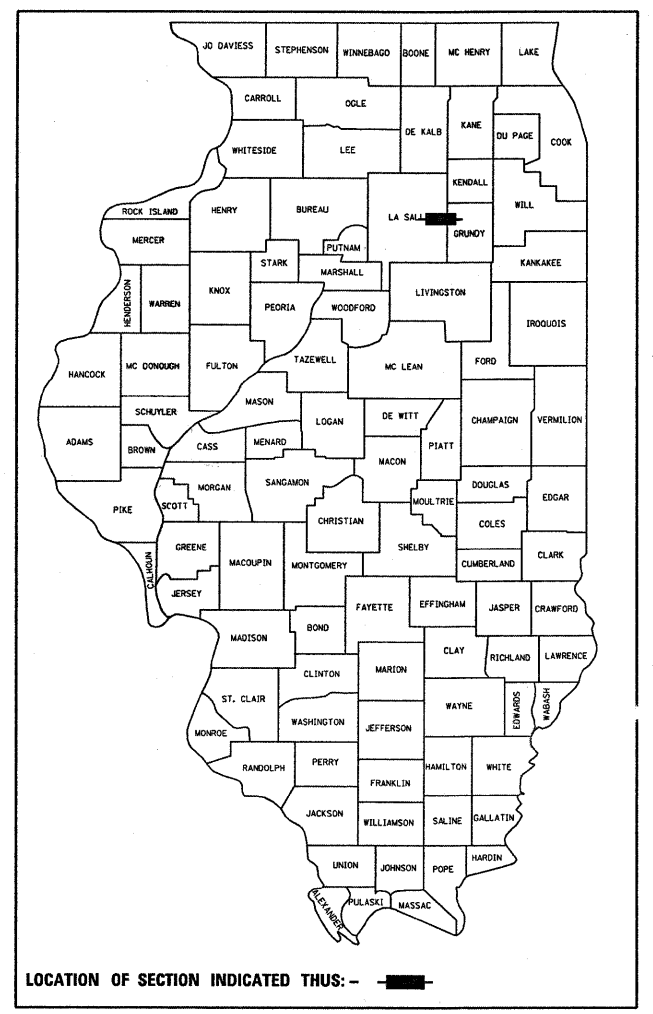


NET & GROSS LENGTH = 46,832.2 FT. = 8.87 MILE

**PROJECT ENGINEER: CRAIG REED  
PROJECT MANAGER: MARK JONES /BOB BANACH /DAVE HUNT**

**CONTRACT NO. 66A08**

D-93-033-10



**ROAD CLASSIFICATION: RURAL INTERSTATE**  
2010 ADT = 28,200  
P.V. = 62 % S.U. = 6 % M.U. = 32 %

STATE OF ILLINOIS  
DEPARTMENT OF TRANSPORTATION  
DIVISION OF HIGHWAYS

SUBMITTED March 12, 2010  
George Ryan  
DEPUTY DIRECTOR OF HIGHWAYS, REGION ENGINEER

March 19, 2010  
Scott E. Stitt, P.E.  
acting ENGINEER OF DESIGN AND ENVIRONMENT

March 19, 2010  
Christine M. Reed  
DIRECTOR OF HIGHWAYS, CHIEF ENGINEER

**PRINTED BY THE AUTHORITY  
OF THE STATE OF ILLINOIS**