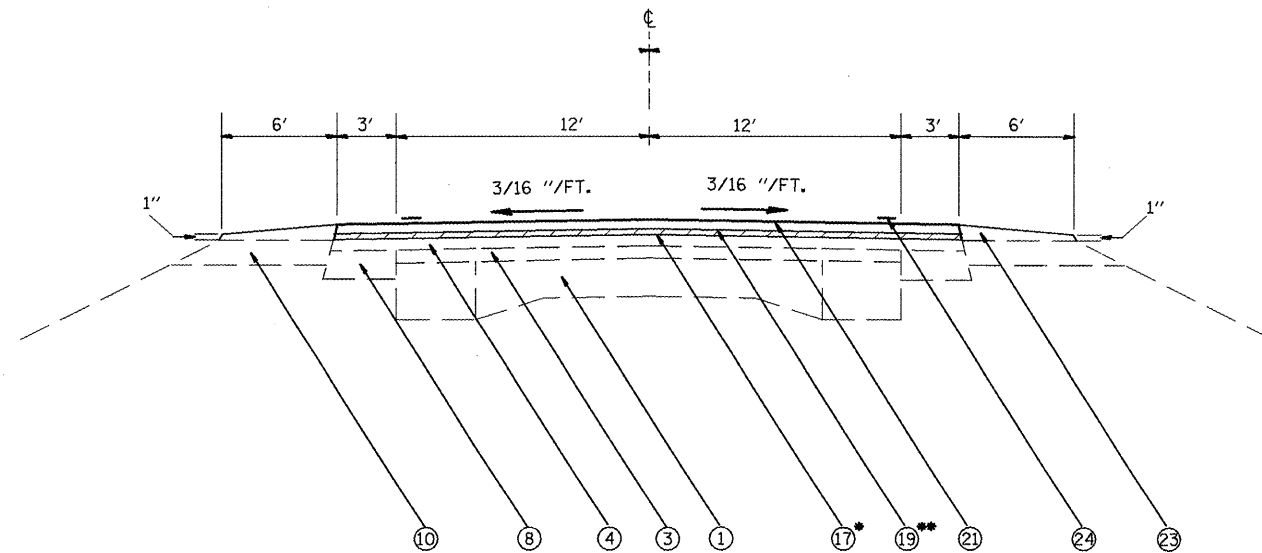


PROPOSED TYPICAL SECTION

STA. 246+32 TO 264+60

#5



PROPOSED TYPICAL SECTION

STA. 401+56 TO 423+59

#6

*NOTE - TRANSITION FROM 3/4" TO 1 1/2" MILLING FROM STA. 401+56 TO 402+16
 **NOTE - TAPER 3/4" LEVEL BINDER IN 3' SHOULDER TO 0" AT CONCRETE ENTRANCES

LEGEND

EXISTING

- ① P.C.C. PAVEMENT (9"-6"-9")
- ② BITUMINOUS OVERLAY, 2 1/2"±
- ③ BITUMINOUS OVERLAY, 3 3/4"±
- ④ BITUMINOUS OVERLAY, 2 1/4"±
- ⑤ P.C.C. BASE COURSE, 8"
- ⑥ SUBBASE GRANULAR, 12"
- ⑦ CURB & GUTTER (B-6.12)
- ⑧ HMA SHOULDERS, 6"±
- ⑨ HMA SHOULDERS, 8"±
- ⑩ AGGREGATE SHOULDERS, 6"±
- ⑪ BITUMINOUS OVERLAY, 10"±
- ⑫ BITUMINOUS OVERLAY, 6"±
- ⑬ BITUMINOUS OVERLAY, 4"±
- ⑭ BITUMINOUS BASE COURSE, 12"±
- ⑮ GRANULAR EMBANKMENT, 0" TO 15"±

PROPOSED

- ⑯ HMA SURFACE REMOVAL, 3/4"
- ⑰ HMA SURFACE REMOVAL, 1 1/2"
- ⑱ HMA SURFACE REMOVAL, 2"
- ⑲ POLY LEVEL BINDER, IL 4.75, N50, 3/4"
- ⑳ POLY HMA SURF. CSE. MIX "E", N70, 1 1/2"
- ㉑ POLY HMA SURF. CSE. MIX "D", N50, 1 1/2"
- ㉒ HMA SHOULDERS, 1 1/2"
- ㉓ AGGREGATE SHOULDERS, TYPE B
- ㉔ EPOXY PAVEMENT MARKING
- ㉕ URETHANE EPOXY PAVEMENT MARKING
- ㉖ PREFORMED PLASTIC PAVEMENT MARKING, TYPE B

FILE NAME = D468625-sh1-typical.dgn	USER NAME = dietzsm	DESIGNED -	REVISED -	STATE OF ILLINOIS DEPARTMENT OF TRANSPORTATION	TYPICAL SECTIONS			F.A.P. RTE.	SECTION	COUNTY	TOTAL SHEETS	SHEET NO.
	PLOT SCALE = 100.0000' / IN.	DRAWN -	REVISED -					673	104N,RS-5,106RS-2,107RS-6	WOODFORD	03	10
	PLOT DATE = 1/28/2018	CHECKED -	REVISED -					CONTRACT NO. 68625				
				SCALE:		SHEET NO.	OF SHEETS	STA.	TO STA.		ILLINOIS FED. AID PROJECT	