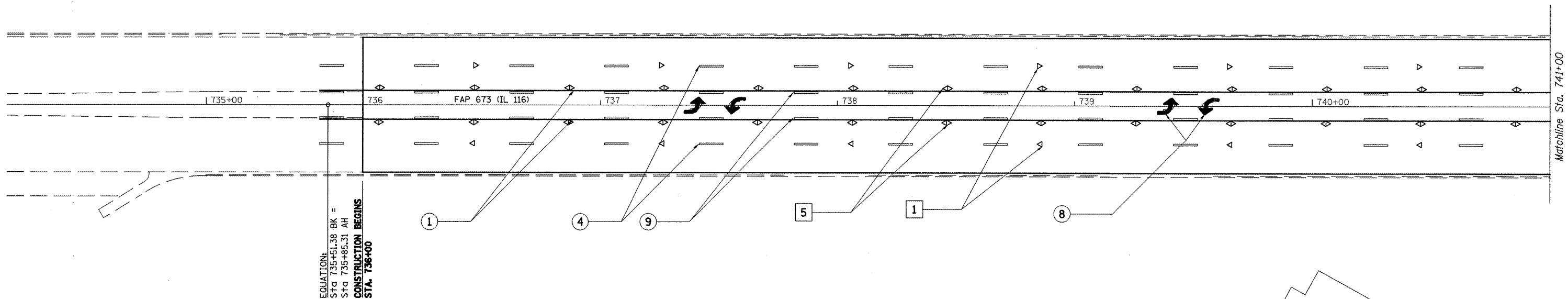
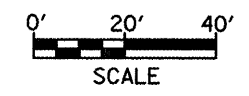
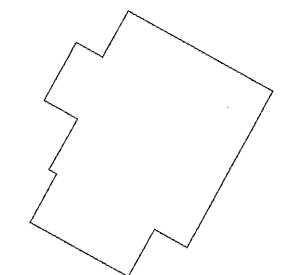


F.A.P. RTE.	SECTION	COUNTY	TOTAL SHEETS	SHEET NO.
673	*	WOODFORD	103	25
STA.	TO STA.			
FED. ROAD DIST. NO.	ILLINOIS	FED. AID PROJECT		

T27N, R2W, 4TH P.M.



PAVEMENT MARKING LEGEND		RAISED REFLECTIVE PAVEMENT MARKERS (RRPM)	
① 4" SOLID (YELLOW)		① ONE-WAY CRYSTAL MARKER AT 90' CENTERS	
② 4" SOLID (WHITE)		② ONE-WAY CRYSTAL MARKER AT 40' CENTERS	
③ 12" CROSSWALK (WHITE)		③ ONE-WAY CRYSTAL MARKER AT 20' CENTERS	
④ 6" SKIP DASH (WHITE) - 10' 30' 10'		④ ONE-WAY AMBER MARKER AT 40' CENTERS	
⑤ 6" SKIP DASH (WHITE) - 10' 30' 10'		⑤ TWO-WAY AMBER MARKER AT 40' CENTERS	
⑥ 8" SOLID (WHITE)		⑥ ONE-WAY CRYSTAL MARKER	
⑦ 12" DIAGONAL (WHITE) - 30' (<45 MPH)		⑦ ONE-WAY AMBER MARKER	
⑧ 24" STOP BAR (WHITE)			
⑨ LETTERS AND SYMBOLS			
⑩ 4" SKIP DASH (YELLOW) - 10' 30' 10'		DELINEATORS	
⑪ 12" DIAGONAL (YELLOW) - 30' (<45 MPH)		① DELINEATOR WITH TWO AMBER REFLECTORS	
⑫ 4" DOUBLE (YELLOW) - 10' 30' 10'		② DELINEATOR WITH THREE AMBER REFLECTORS	
⑬ 6" SKIP DASH (YELLOW) - 10' 30' 10'			



REVISIONS	
NAME	DATE

ILLINOIS DEPARTMENT OF TRANSPORTATION
**PAVEMENT MARKING
 DETAIL**
 STA. 736+00 TO STA. 741+00
 SCALE: 1" = 20'
 DATE **DATE**
 DRAWN BY CADD
 CHECKED BY

DATE
 DN-ONLY