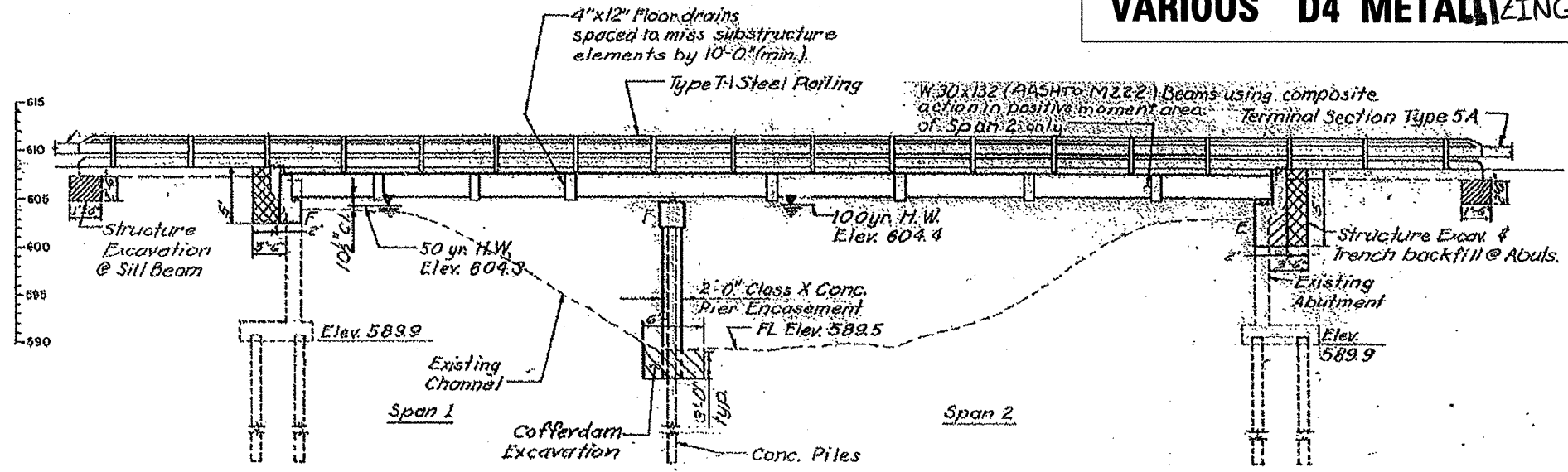


S.N. 066-0010

ROUTE	SECTION	COUNTY	TOTAL SHEETS	SHEET NO.
VARIOUS	D4 METALLIZING 2010	VARIOUS	22	8



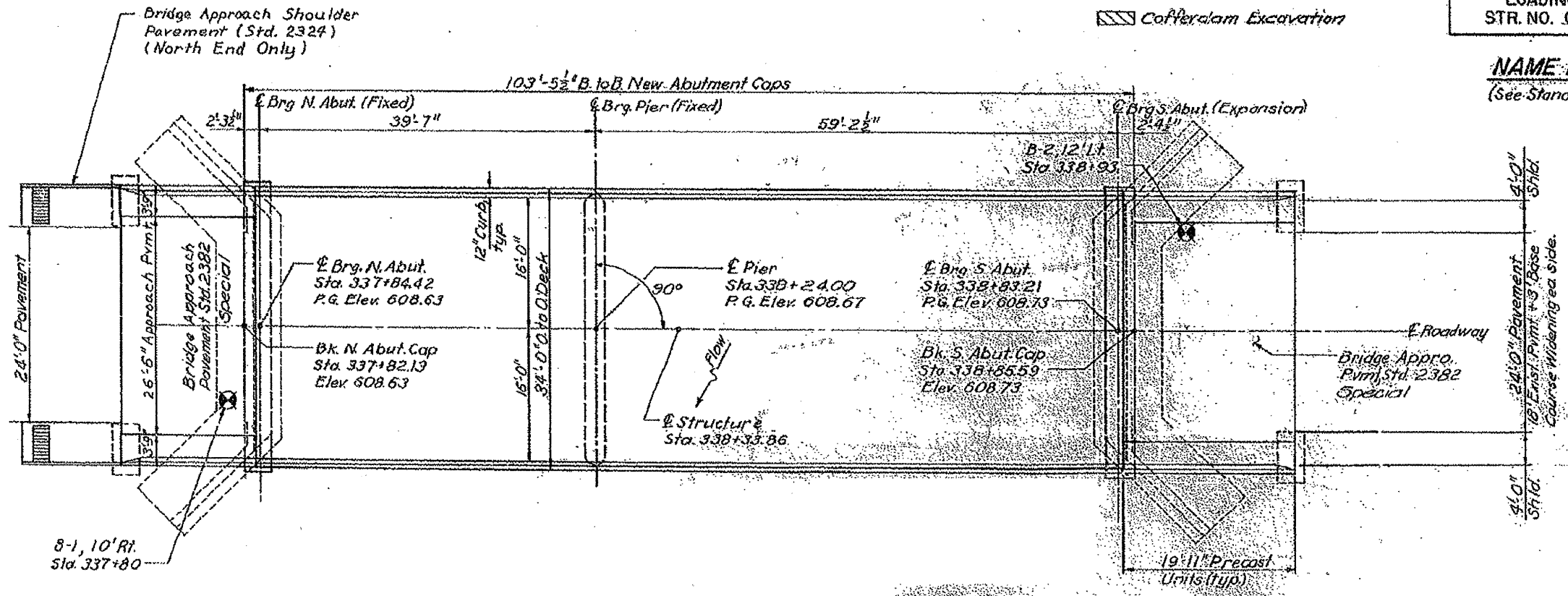
5. All structural steel shall be AASHTO M-222 (See Note 6, except expansion joint angles and attached bars which shall be AASHTO M-183 and shop painted with the zinc-silicate and vinyl paint system.

ELEVATION

- Structure Excavation
- Porous Granular Embankment
- Cofferdam Excavation

STA. 338+33.82
 BUILT 198 BY
 STATE OF ILLINOIS
 F.A. RT. 546 SEC. (26C) BR
 F.A. PROJ. BHF-546(2)
 LOADING HS 20
 STR. NO. 066-0010.

NAME PLATE
 (See Standard 2113)



PLAN



Location 3

FOR INFORMATION ONLY 066-0010

PLAN SHEETS
 066-0010