

DEPARTMENT OF TRANSPORTATION

DIVISION OF HIGHWAYS

PROPOSED HIGHWAY PLANS

VARIOUS

SECTION: D4 BRIDGE METALLIZING 2010

COUNTY: VARIOUS

C-94-153-09



INDEX OF SHEETS

- 1 COVER SHEET
- 2 COMMITMENT SHEET/GENERAL NOTES
- 3 & 4 SUMMARY OF QUANTITIES
- 5-22 PLAN SHEETS

TRAFFIC STANDARDS

- 701101-02
- 701106-02
- 701201-03
- 701901-01
- 701316-04

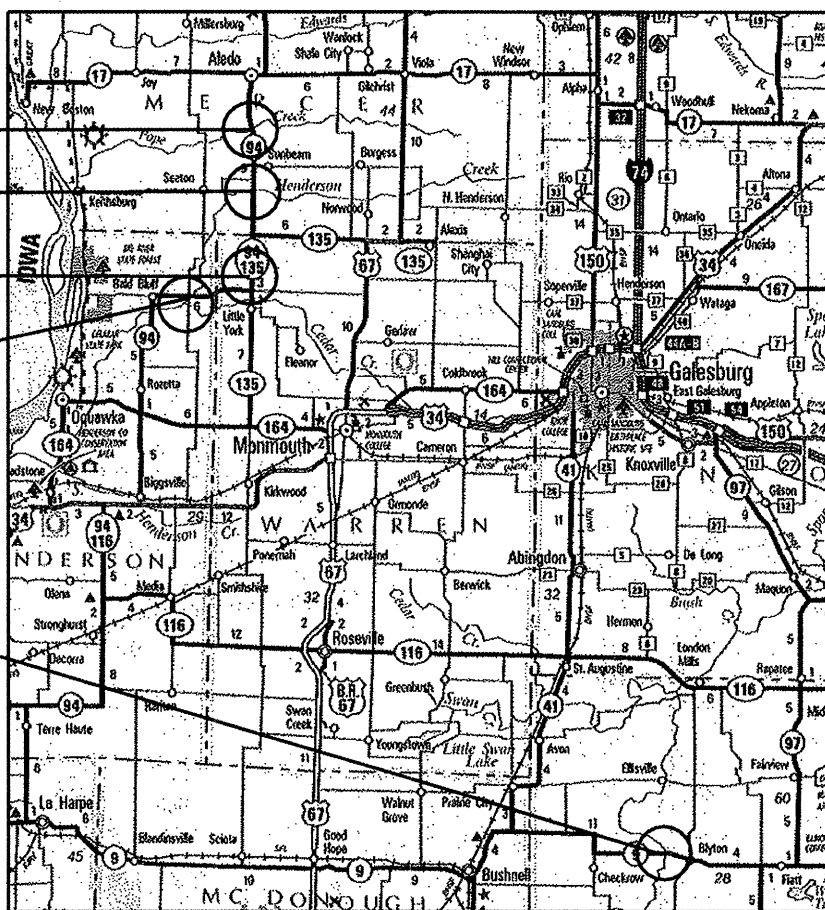
S.N. 066-0009

S.N. 066-0010

S.N. 094-0016

S.N. 036-0040

S.N. 029-0036



ADT
1200 TOTAL, 180 TRUCKS
CONTRACT NO. 68926
CATALOG NO. 034308-00D

J.U.L.I.E.
JOINT UTILITY LOCATION INFORMATION FOR EXCAVATION
1-800-892-0123

PRINTED BY THE AUTHORITY
OF THE STATE OF ILLINOIS

STATE OF ILLINOIS
DEPARTMENT OF TRANSPORTATION
DIVISION OF HIGHWAYS

SUBMITTED Jan 26 20 10

DISTRICT ENGINEER

March 19, 2010
Scott E. Stitt, P.E.
Acting ENGINEER OF DESIGN AND ENVIRONMENT

March 19, 2010
Christine M. Reed
DIRECTOR, DIVISION OF HIGHWAYS

Project Engineer: Jim Miller 309-67151

DESIGNER: TOM INGLIS 309-671-3481

COMMITMENTS

No commitments have been made for this project.

ROUTE	SECTION	COUNTY	TOTAL SHEETS	SHEET NO.
VARIOUS	D4 METALLIZING 2010	VARIOUS	22	2

GENERAL NOTES

Cleaning and metallizing of the existing structural steel shall be as specified in the special provision for "Field Thermal Spraying (Metallizing) Structural Steel". beams, bearings and other structural steel shall be cleaned per Near White Blast Cleaning- SSPC-SP10 As noted below:

Structure No.029-0036. The blast line shall be five feet at the abutments & Pier 8, seven feet on the outside Girder at Pier 2 & 4. Five feet on the interior beams at Pier 2 & 8.

Structure 066-0009. The entire end spans shall be blasted according to SSPC-SP10 and Metalized five feet at the abutments and five feet either side of the joint, remaining structural steel on the end spans only shall be painted with Paint system 1.

All other structures shall be blasted and metalized five feet at the abutments and five feet either side of the deck joints.

Seal Coat and top Coat shall be applied on all Metalized surfaces, refer to the Special Provisions Table 1 for approved suppliers.

Air Monitors: None for this Project

QP1 will be required for this project

Paint Colors: Structure Number 036-0040 shall be Interstate Green (Munsell No. 7.5G 4/8) on the fascia beams. All Interior beams shall be Light Gray (Munsell No. 5B 7/1). Structure Numbers 066-0009, 066-0010, 094-0016, 029-0036 shall be Blue (Munsell No. 10B 3/6) on the fascia beams or girders. All interior beams or girders shall be Light Gray (Munsell No. 5B 7/1)

**COMMITMENTS
GENERAL NOTES**

Summary of Quantities

Code Order

ROUTE		SECTION	COUNTY	SHEET	
VAR		D4 BRIDGE METALLIZING 2010	VARIOUS	TOTAL	NO.
VAR				22	3
			CONTRACT NO.	68926	

CONSTRUCTION TYPE CODE

SFTY-2A

100%

STATE

CODE No.	ITEM	UNIT	Tot.QTY		
50600700	CLEANING AND PAINTING STEEL BRIDGE NO. 2	L SUM	1	1	
67100100	MOBILIZATION	L SUM	1	1	
70100100	TRAFFIC CONTROL AND PROTECTION, STANDARD 701316	EACH	2	2	
70100450	TRAFFIC CONTROL AND PROTECTION, STANDARD 701201	L SUM	1	1	
X0325381	FIELD THERMAL SPRAYING (METALLIZING) STRUCTURAL STEEL NO. 1	L SUM	1	1	
X0325382	FIELD THERMAL SPRAYING (METALLIZING) STRUCTURAL STEEL NO. 2	L SUM	1	1	
X0325383	FIELD THERMAL SPRAYING (METALLIZING) STRUCTURAL STEEL NO. 3	L SUM	1	1	
X0325384	FIELD THERMAL SPRAYING (METALLIZING) STRUCTURAL STEEL NO. 4	L SUM	1	1	
X0325385	FIELD THERMAL SPRAYING (METALLIZING) STRUCTURAL STEEL NO. 5	L SUM	1	1	
X5060601	CONTAINMENT AND DISPOSAL OF NON-LEAD PAINT CLEANING RESIDUES NO.1	L SUM	1	1	

Summary of Quantities

Code Order

ROUTE		SECTION	COUNTY	SHEET	
VAR		D4 BRIDGE METALIZING 2010	VARIOUS	TOTAL	NO.
VAR				22	4
			CONTRACT NO.	68926	

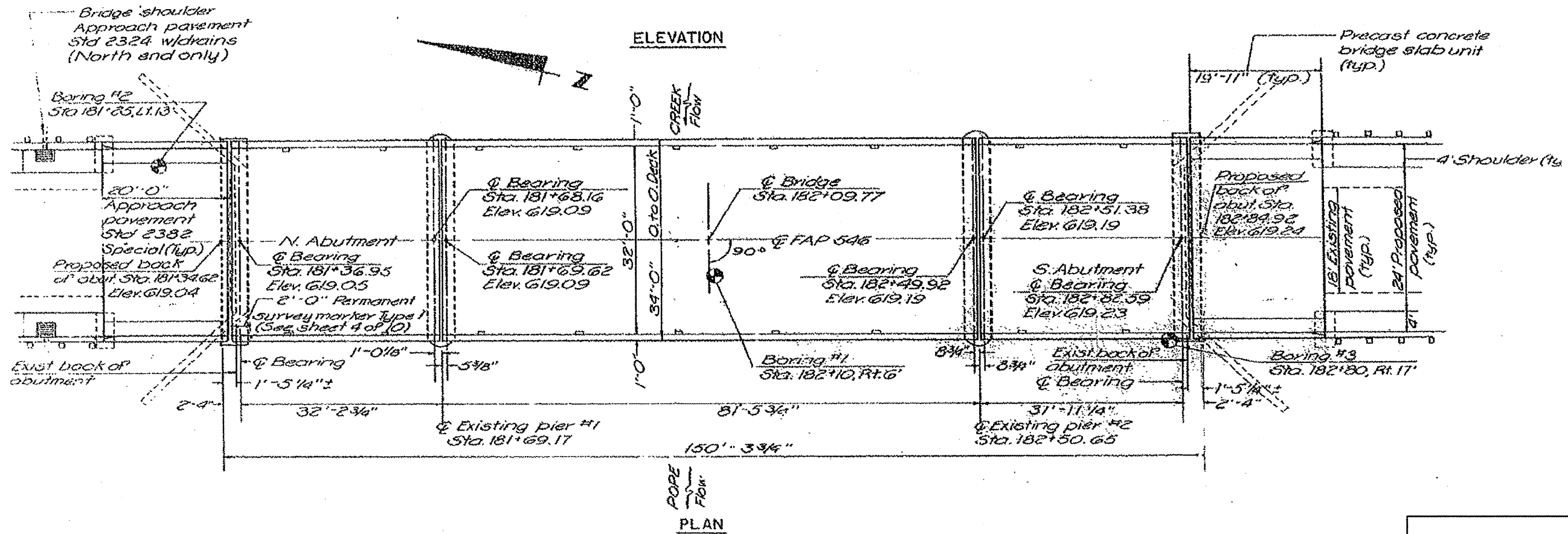
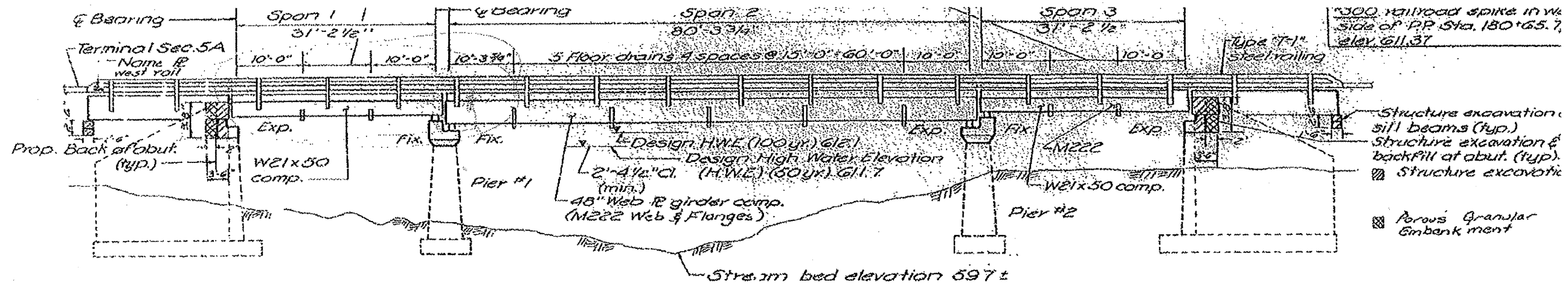
CONSTRUCTION TYPE CODE

SFTY-2A	
100%	
STATE	

CODE No.	ITEM	UNIT	Tot.QTY		
X5060602	CONTAINMENT AND DISPOSAL OF NON-LEAD PAINT CLEANING RESIDUES NO.2	L SUM	1	1	
X5060603	CONTAINMENT AND DISPOSAL OF NON-LEAD PAINT CLEANING RESIDUES NO.3	L SUM	1	1	
X5060604	CONTAINMENT AND DISPOSAL OF NON-LEAD PAINT CLEANING RESIDUES NO.4	L SUM	1	1	
X5060605	CONTAINMENT AND DISPOSAL OF NON-LEAD PAINT CLEANING RESIDUES NO.5	L SUM	1	1	
X7015005	CHANGEABLE MESSAGE SIGN	CAL DA	15	15	

S.N. 066-0009

ROUTE	SECTION	COUNTY	TOTAL SHEETS	SHEET NO.
VARIOUS	D4 METALIZING 2010	VARIOUS	22	5

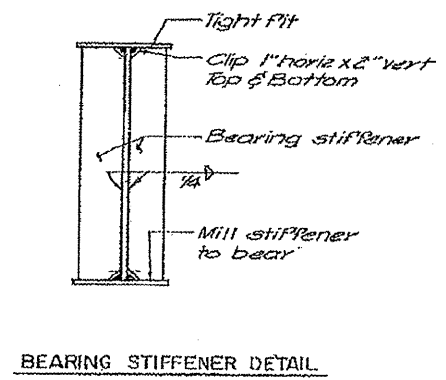
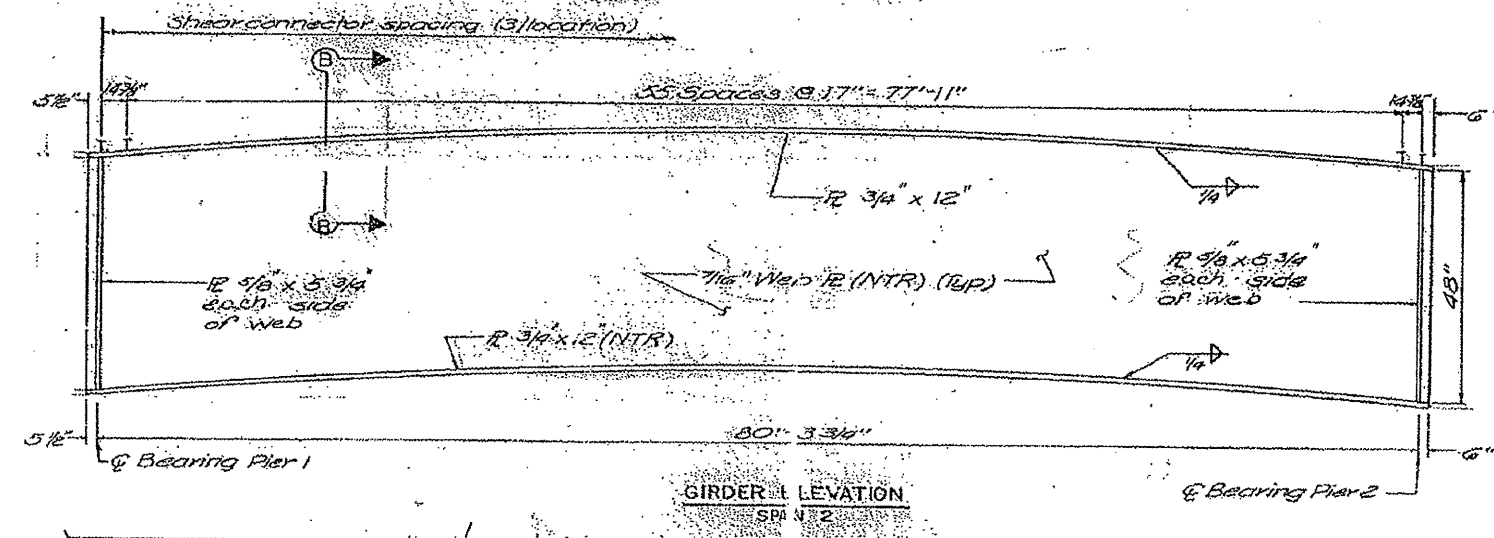
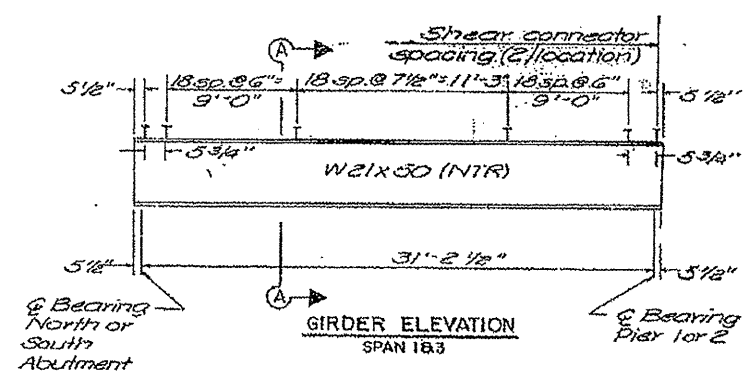
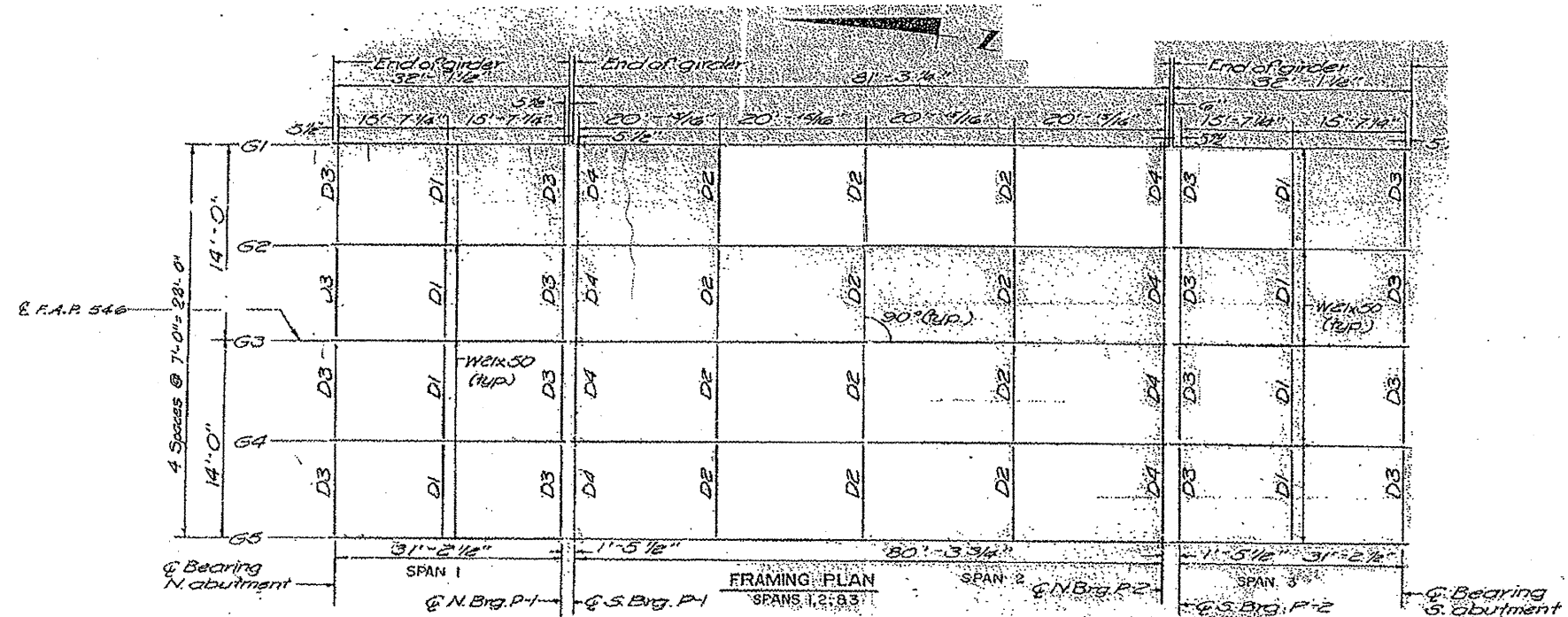


FOR INFORMATION ONLY 066-0009

PLAN SHEETS
Location 2

066-0009

ROUTE	SECTION	COUNTY	TOTAL SHEETS	SHEET NO.
VARIOUS	D4 METALIZING 2010	VARIOUS	22	6

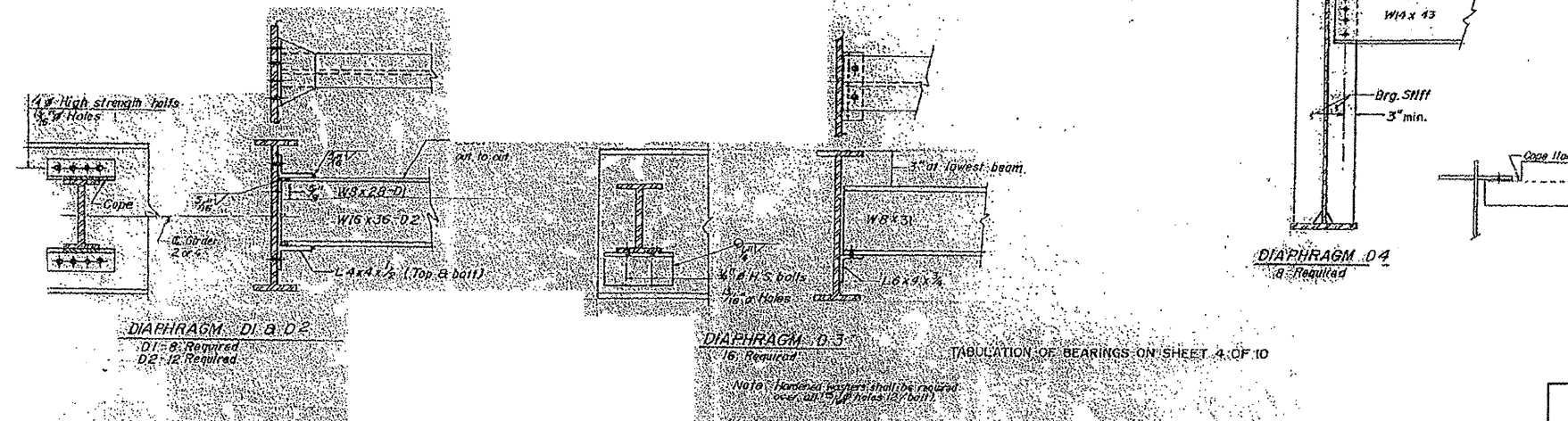
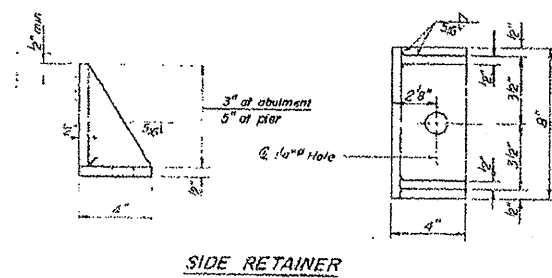
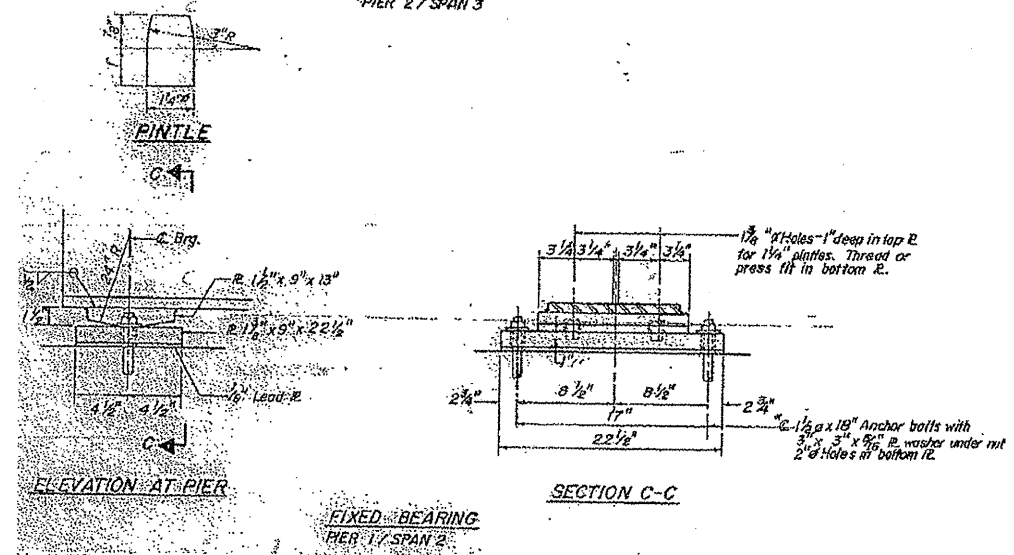
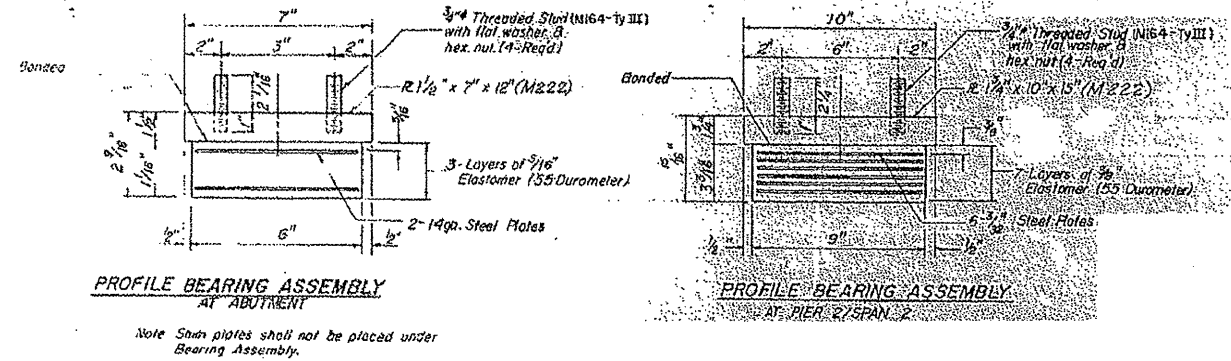
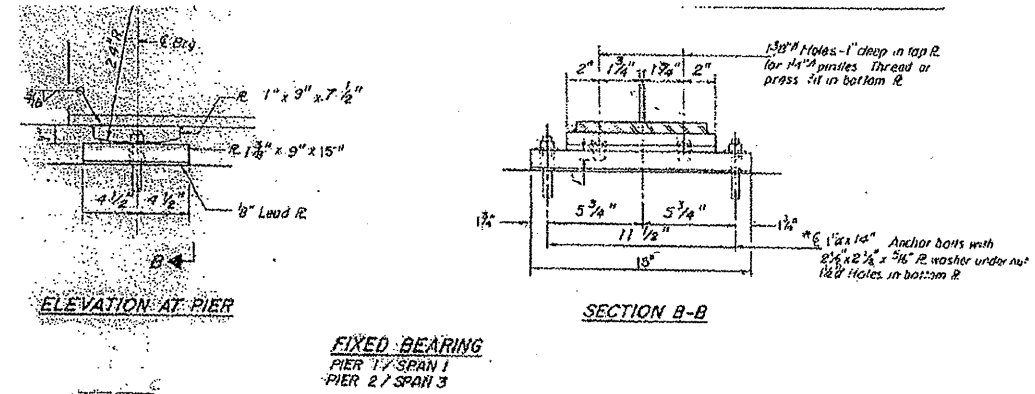
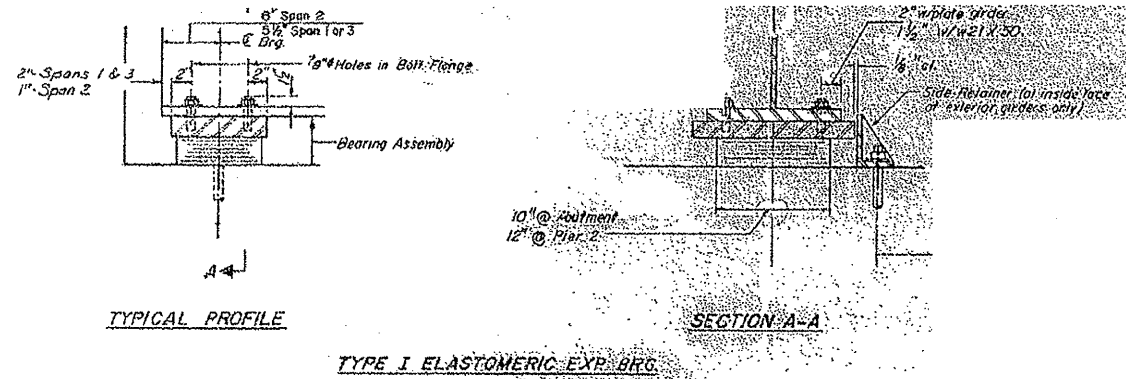


FOR INFORMATION ONLY 066-0009

PLAN SHEETS

S.N. 036-0040

ROUTE	SECTION	COUNTY	TOTAL SHEETS	SHEET NO.
VARIOUS	D4 METALIZING 2010	VARIOUS	22	7

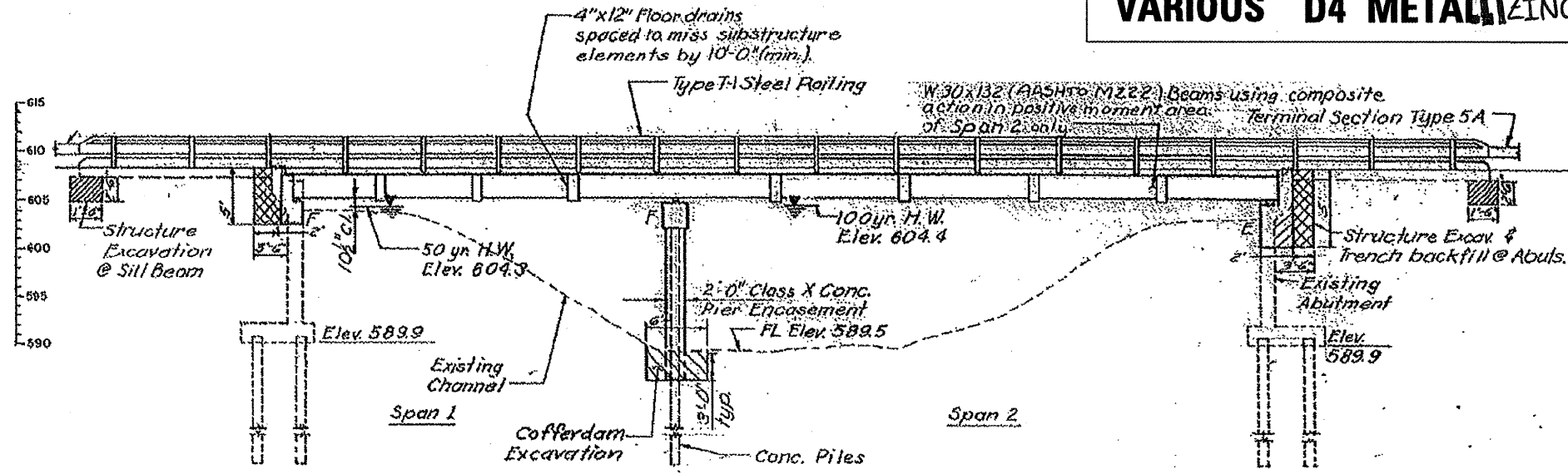


FOR INFORMATION ONLY 066-0009

PLAN SHEETS

S.N. 066-0010

ROUTE	SECTION	COUNTY	TOTAL SHEETS	SHEET NO.
VARIOUS	D4 METALLIZING 2010	VARIOUS	22	8



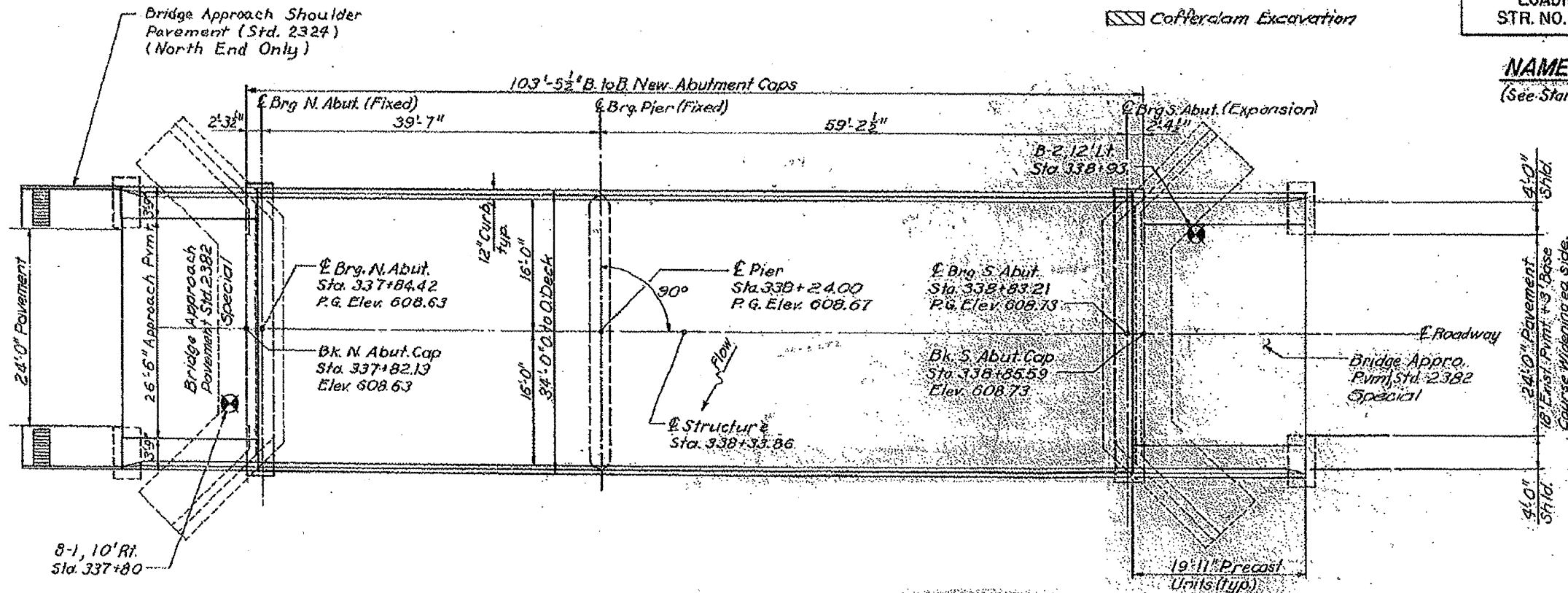
5. All structural steel shall be AASHTO M-222 (See Note 6, except expansion joint angles and attached bars which shall be AASHTO M-183 and shop painted with the zinc-silicate and vinyl paint system.

ELEVATION

- Structure Excavation
- Porous Granular Embankment
- Cofferdam Excavation

STA. 338+33.82
 BUILT 1998 BY
 STATE OF ILLINOIS
 F.A. RT. 546 SEC. (26C) BR
 F.A. PROJ. BHF-546(2)
 LOADING HS 20
 STR. NO. 066-0010.

NAME PLATE
 (See Standard 2113)



PLAN



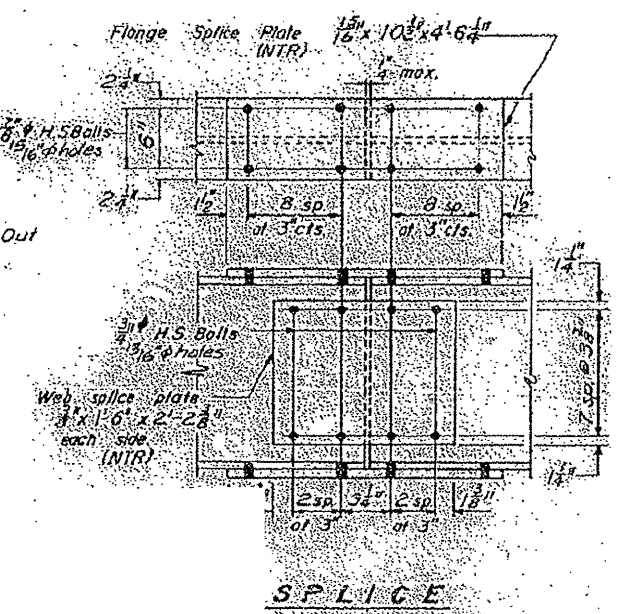
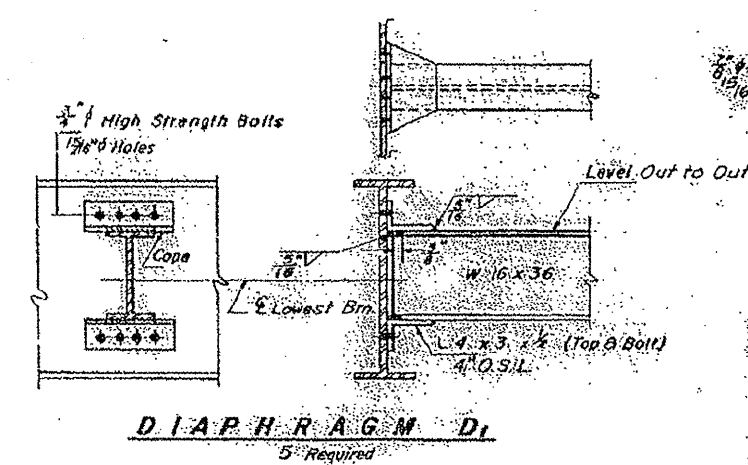
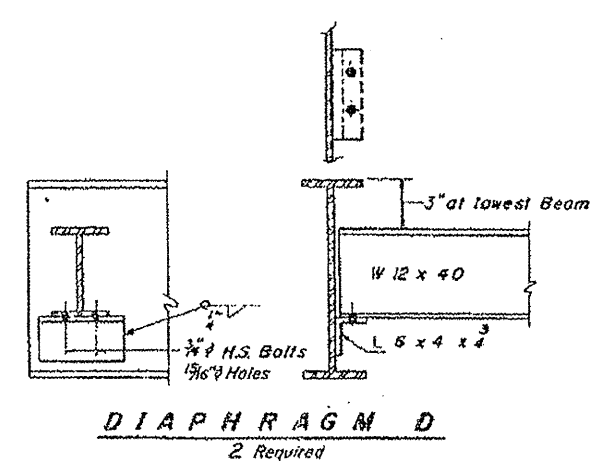
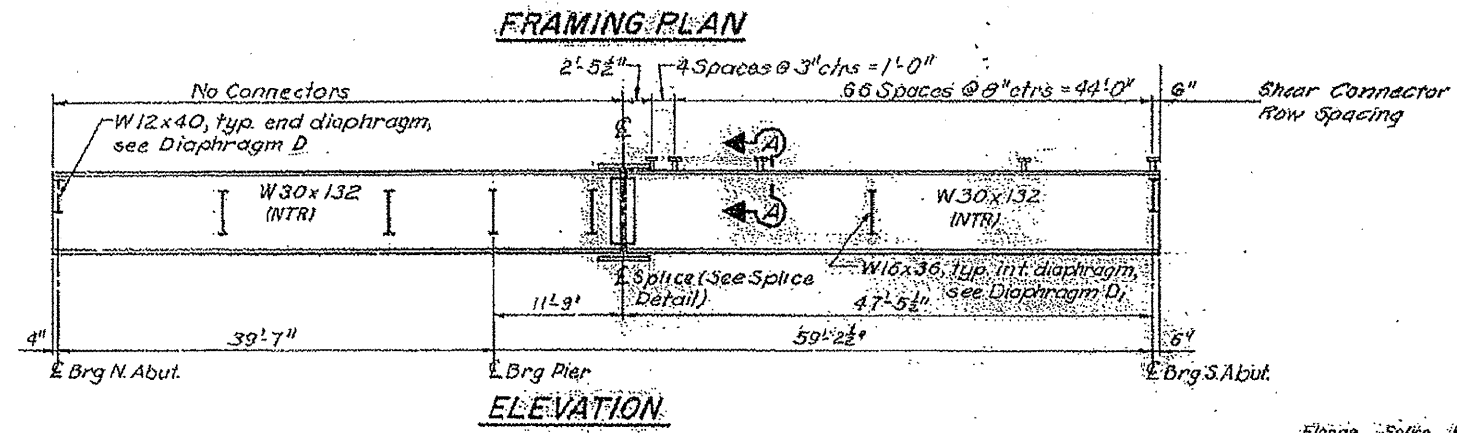
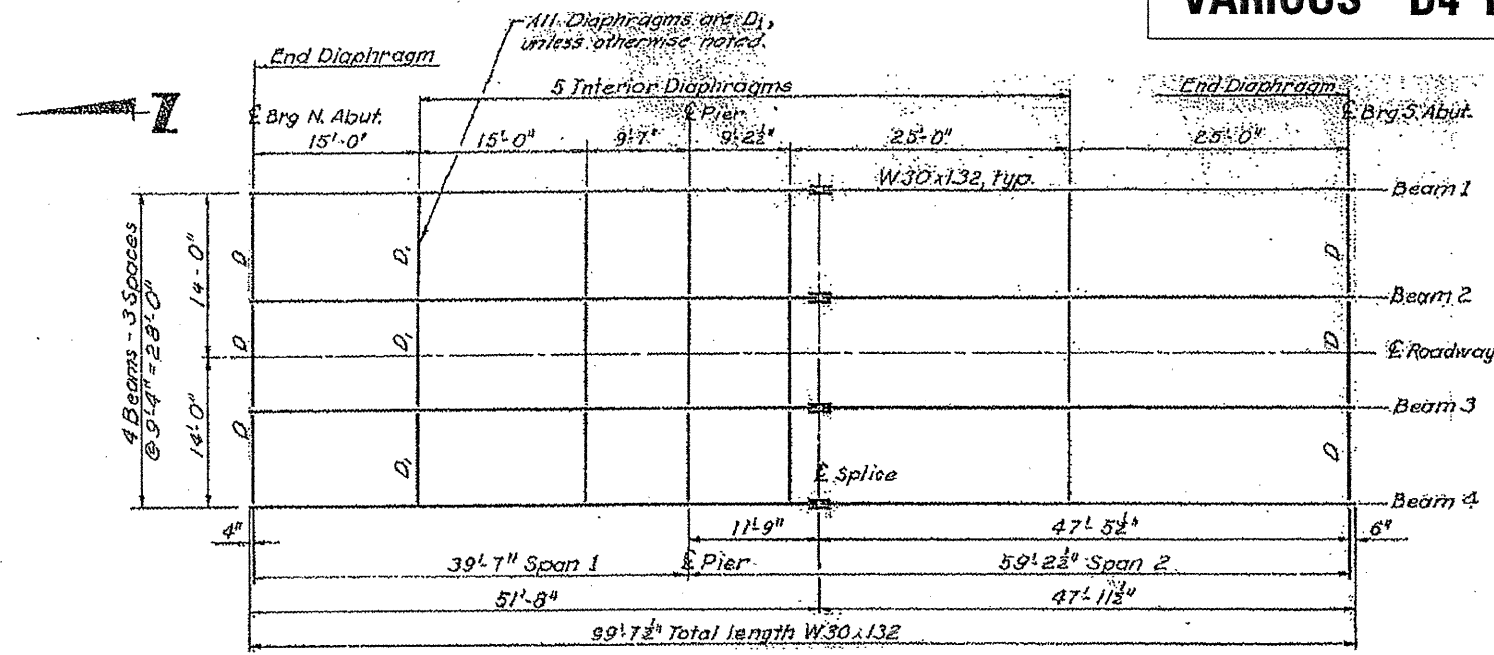
Location 3

FOR INFORMATION ONLY 066-0010

PLAN SHEETS
 066-0010

S.N. 066-0010

ROUTE	SECTION	COUNTY	TOTAL SHEETS	SHEET NO.
VARIOUS	D4 METALLIZING 2010	VARIOUS	22	9

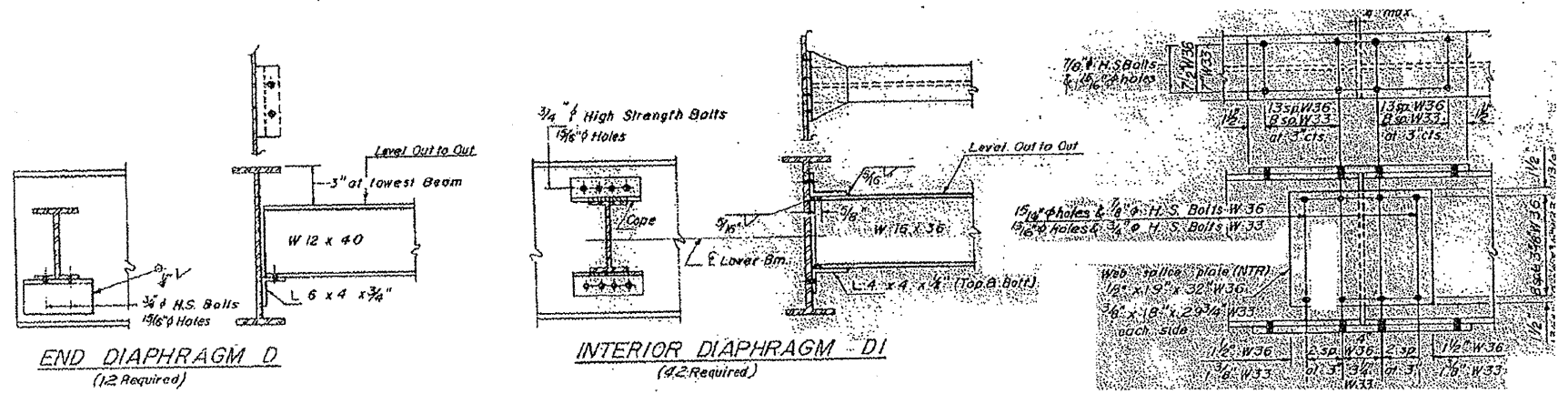
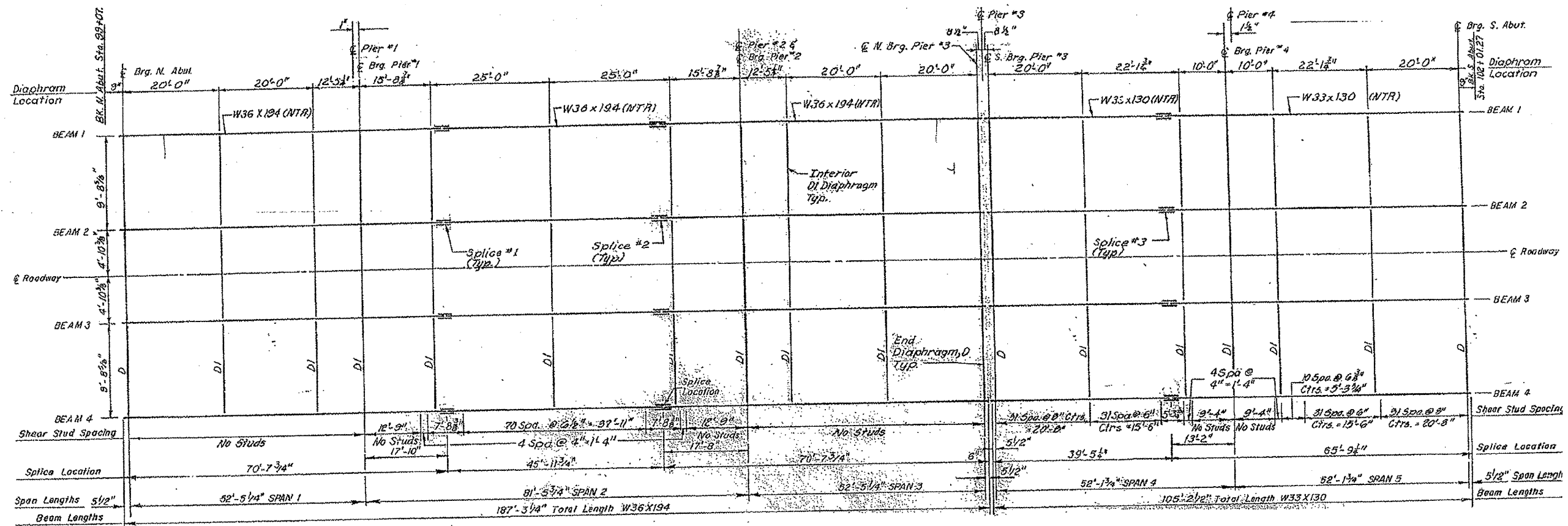


FOR INFORMATION ONLY 066-0010

PLAN SHEETS

S.N.094-0016

ROUTE	SECTION	COUNTY	TOTAL SHEETS	SHEET NO.
VARIOUS	D4 METALLIZING 2010	VARIOUS	22	11

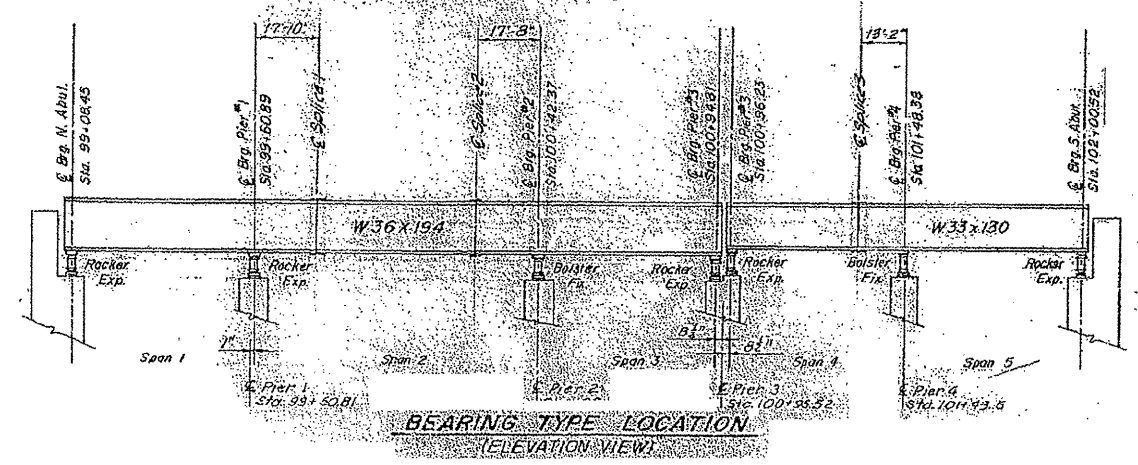
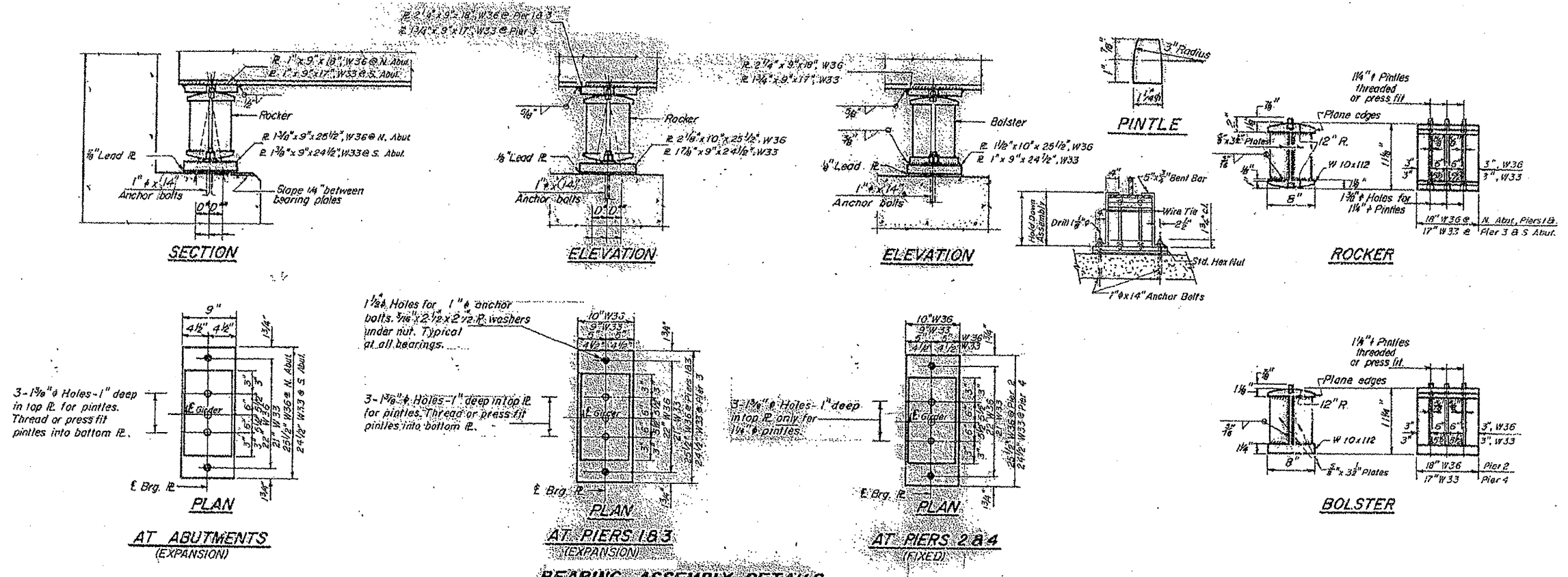


FOR INFORMATION ONLY FRAMING PLAN 094-0016

PLAN SHEETS

S.N.094-0016

ROUTE	SECTION	COUNTY	TOTAL SHEETS	SHEET NO.
VARIOUS	D4 METALLIZING 2010	VARIOUS	22	12

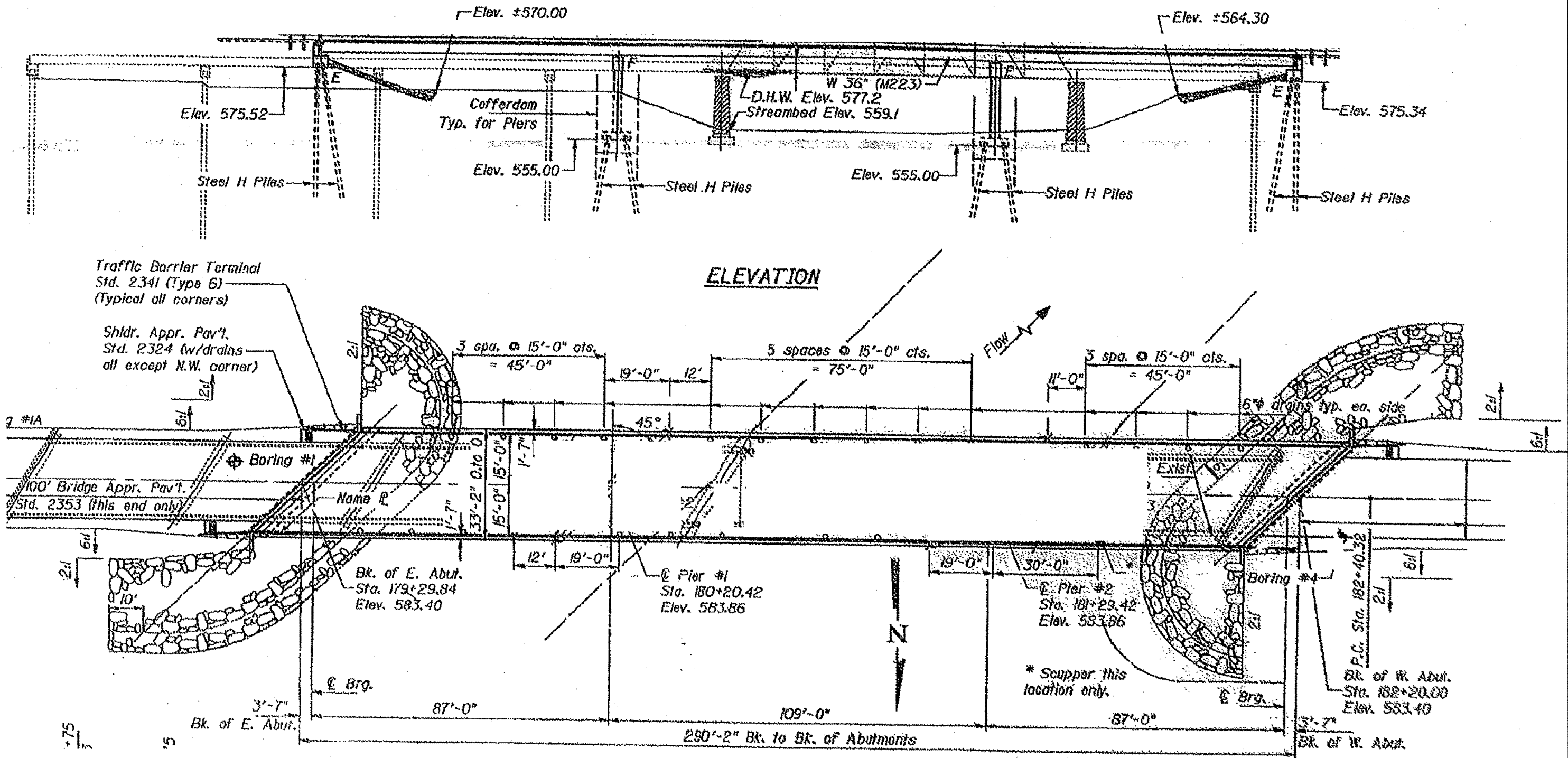


FOR INFORMATION ONLY

PLAN SHEETS

S.N. 036-0040

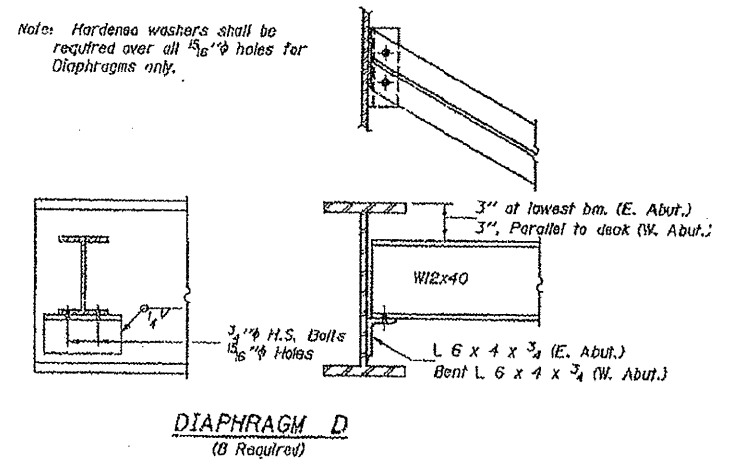
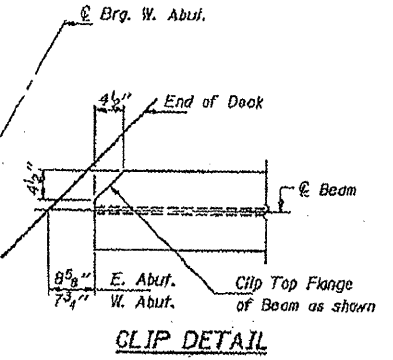
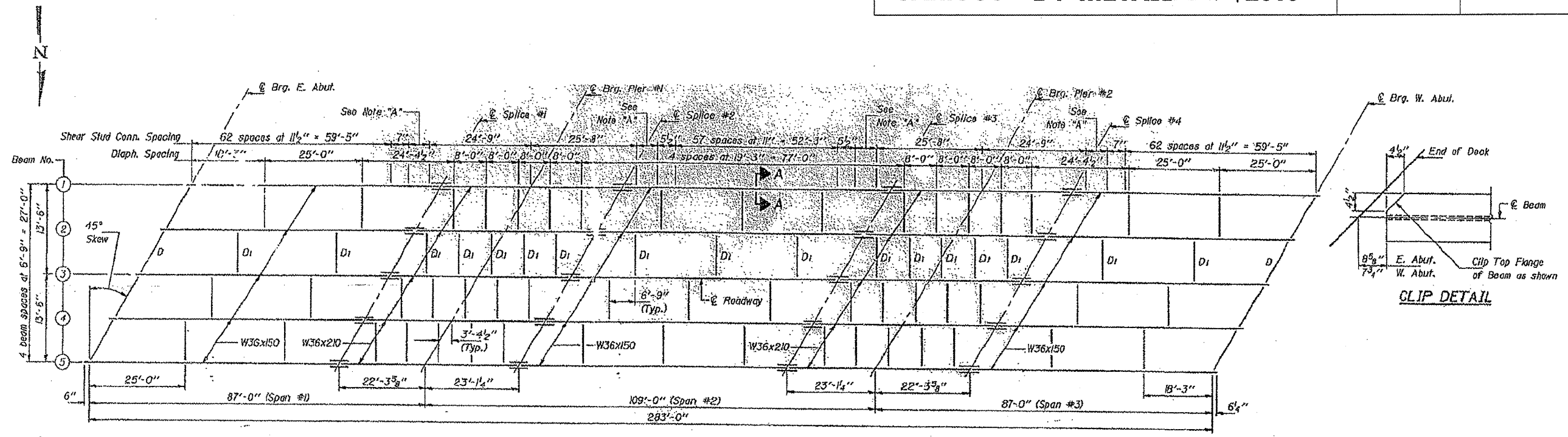
ROUTE	SECTION	COUNTY	TOTAL SHEETS	SHEET NO.
VARIOUS	D4 METALLIZING 2010	VARIOUS	22	13



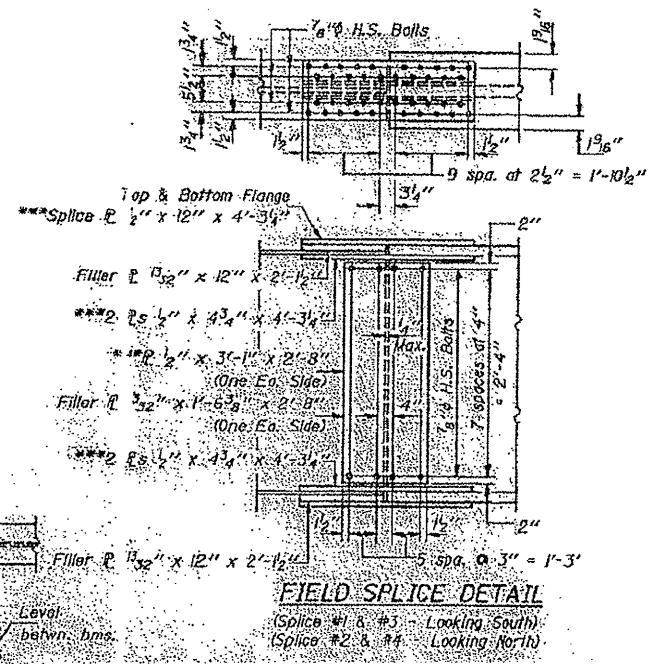
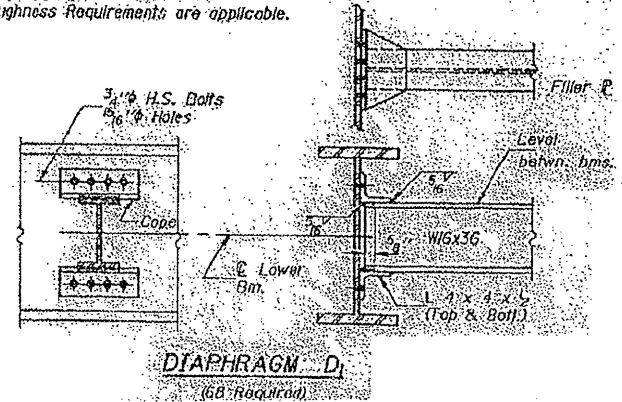
PLAN SHEETS
Location 1

S.N. 036-0040

ROUTE	SECTION	COUNTY	TOTAL SHEETS	SHEET NO.
VARIOUS	D4 METALLIZING 2010	VARIOUS	22	14



*** Indicates plates to which Notch Toughness Requirements are applicable.

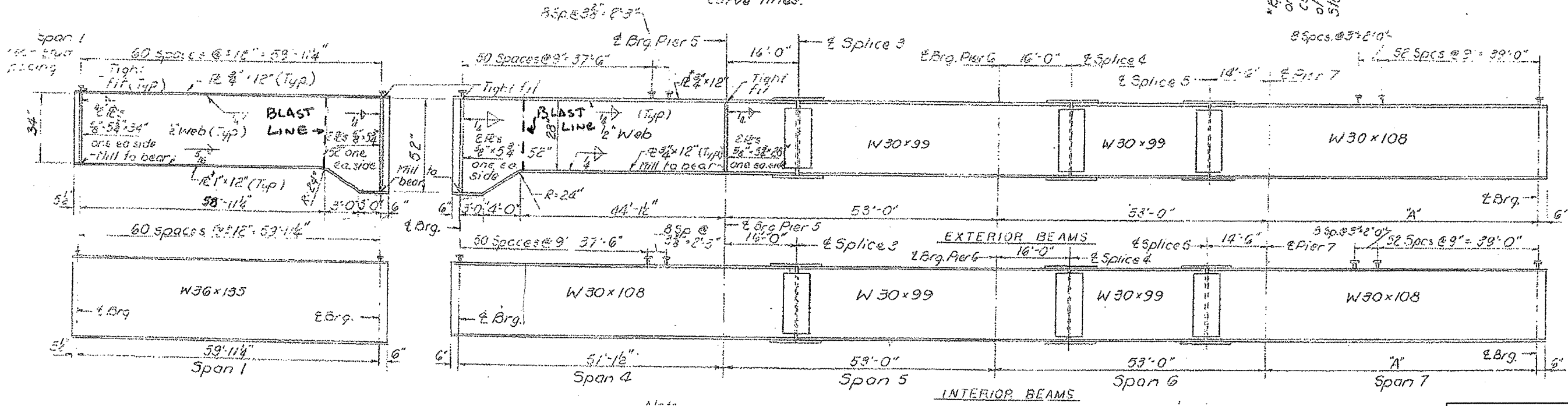
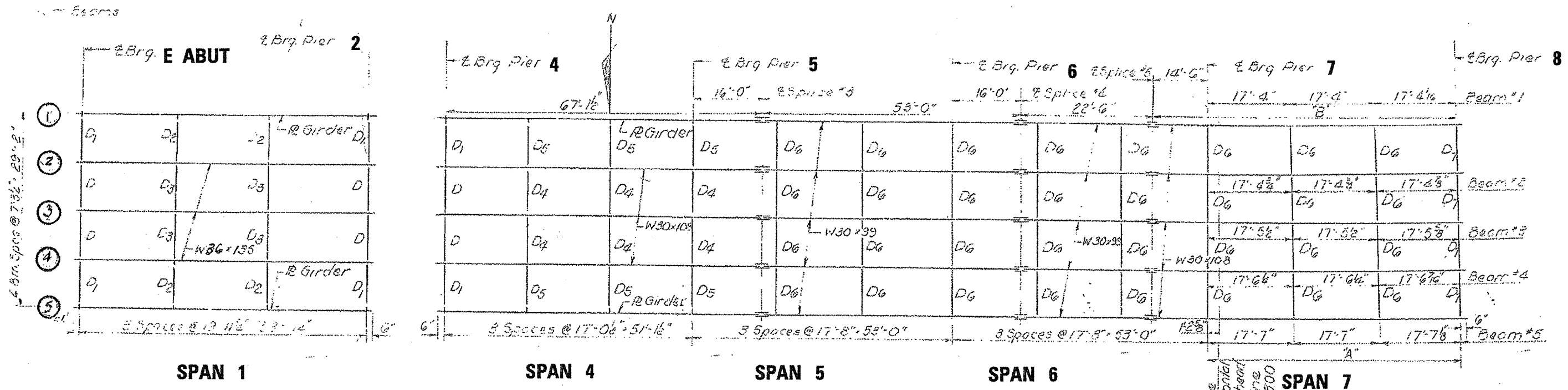


FOR INFORMATION ONLY 036-0040

PLAN SHEETS

S.N. 029-0036

ROUTE	SECTION	COUNTY	TOTAL SHEETS	SHEET NO.
VARIOUS	D4 METALLIZING 2010	VARIOUS	22	17

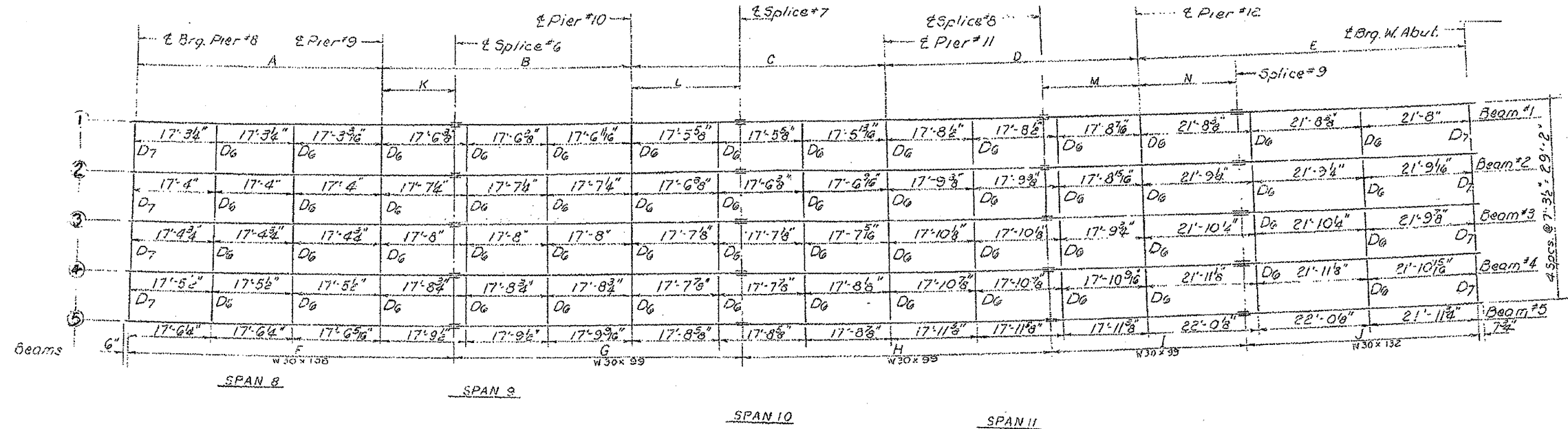


FOR INFORMATION ONLY

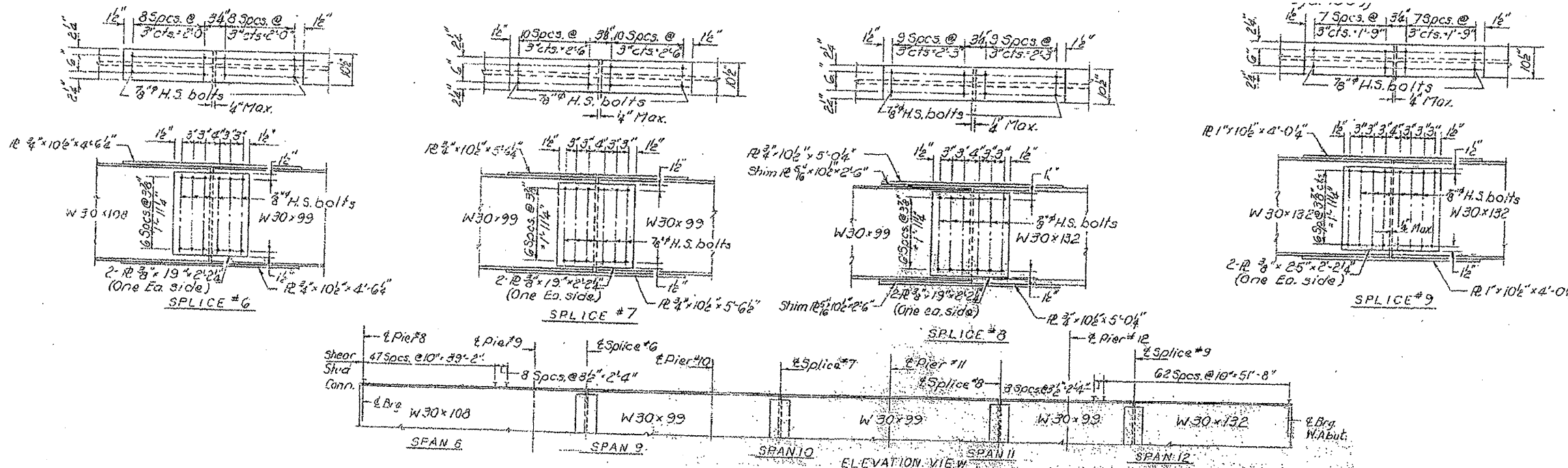
PLAN SHEETS

S.N. 029-0036

ROUTE	SECTION	COUNTY	TOTAL SHEETS	SHEET NO.
VARIOUS	D4 METALLIZING 2010	VARIOUS	22	19



FRAMING PLAN
(All dimensions along Curve lines)

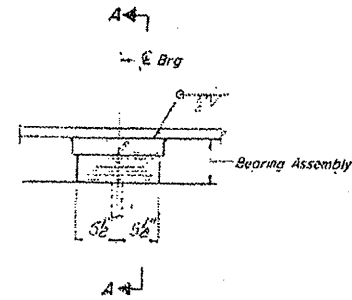


FOR INFORMATION ONLY

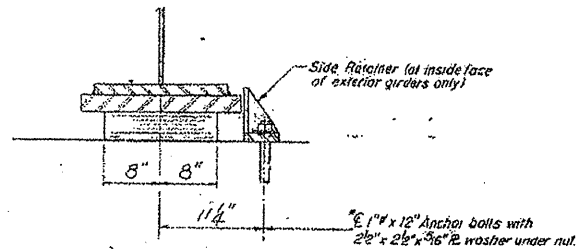
PLAN SHEETS

S.N. 029-0036

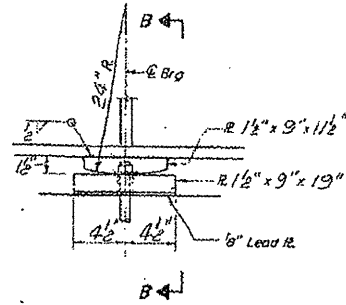
ROUTE	SECTION	COUNTY	TOTAL SHEETS	SHEET NO.
VARIOUS	D4 METALLIZING, 2010	VARIOUS	22	20



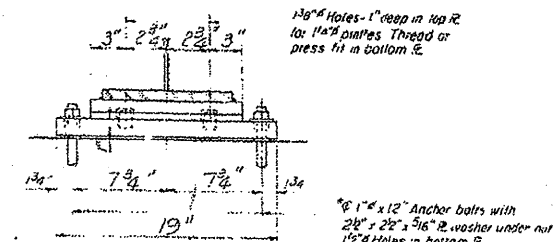
SECTION AT PIERS



SECTION A-A



ELEVATION AT PIER



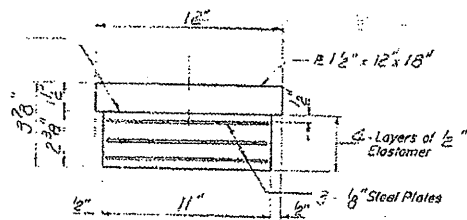
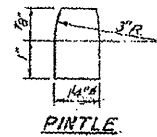
SECTION B-B

TYPE I ELASTOMERIC EXP. BRG.

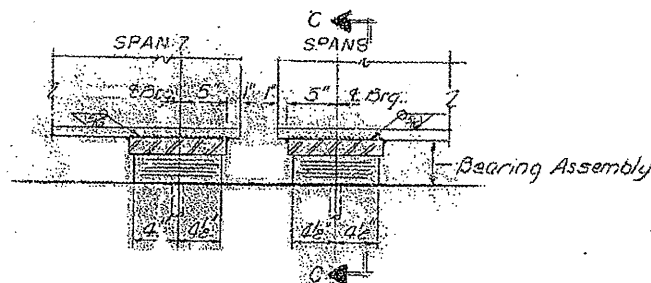
PIERS 5, 7 & 9

FIXED BEARING

PIER # 6



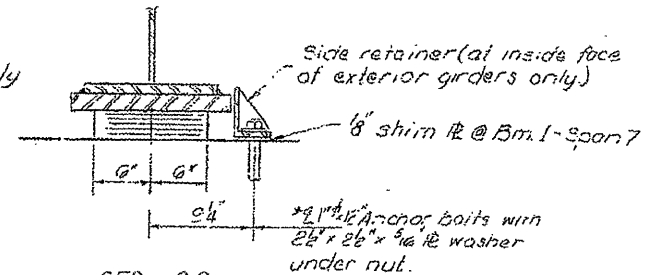
BEARING ASSEMBLY



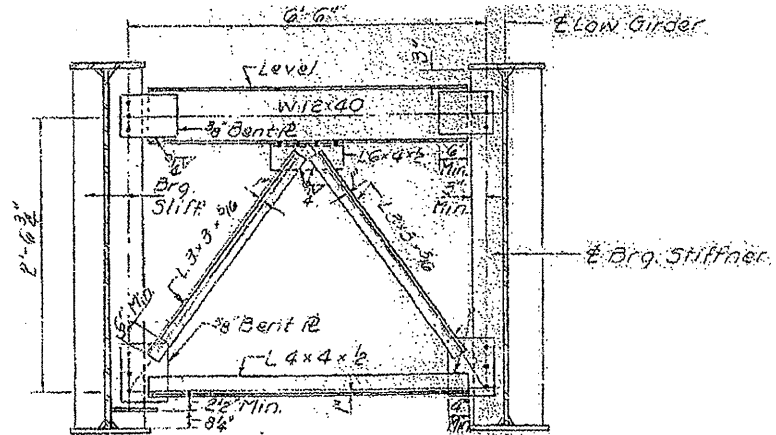
SECTION AT PIER

TYPE I ELASTOMERIC EXP. BRG.

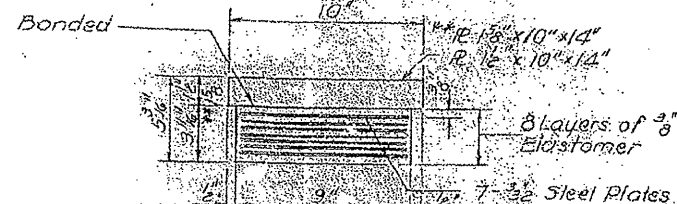
PIER 8



SEC. C-C



CROSS FRAME OF
(8 Required)



BEARING DETAILS

PIERS 5, 6, 7, 8 & 9

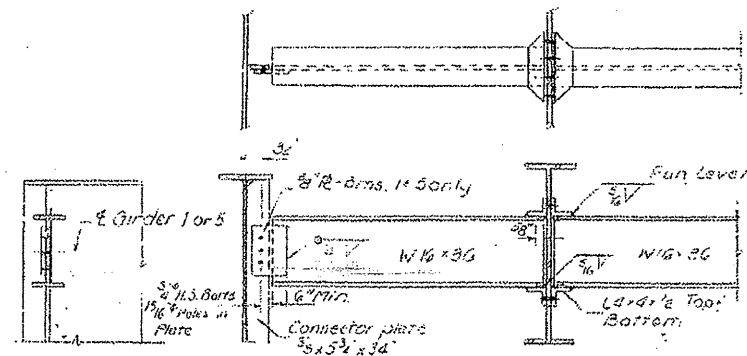
F.A.R.T. 685 SEC. (390-2) B.A.

FOR INFORMATION ONLY

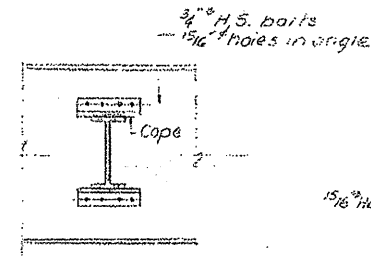
PLAN SHEETS

S.N. 029-0036

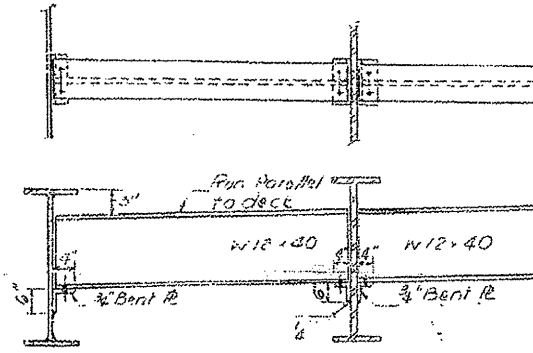
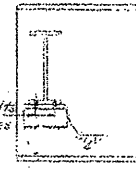
ROUTE	SECTION	COUNTY	TOTAL SHEETS	SHEET NO.
VARIOUS	D4 METALLIZING, 2010	VARIOUS	22	21



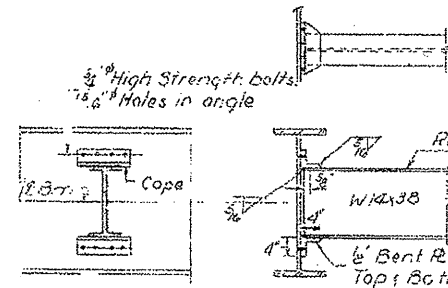
DIAPHRAGM D2
(6 Req'd)



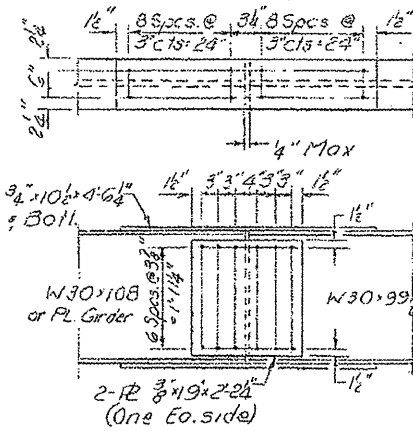
DIAPHRAGM D3
(4 Req'd)



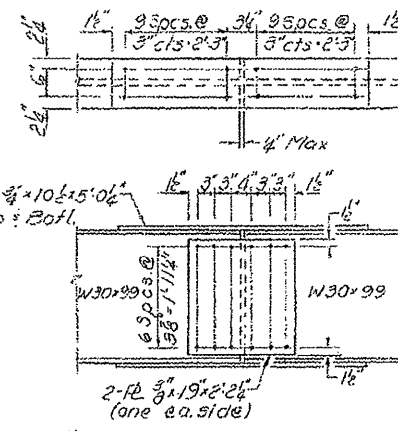
DIAPHRAGM D7
(12 Req'd)



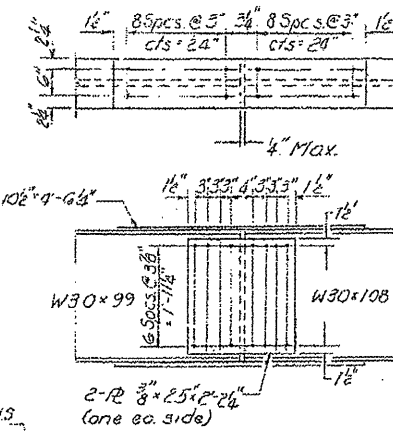
DIAPHRAGM D6
(88 Req'd)



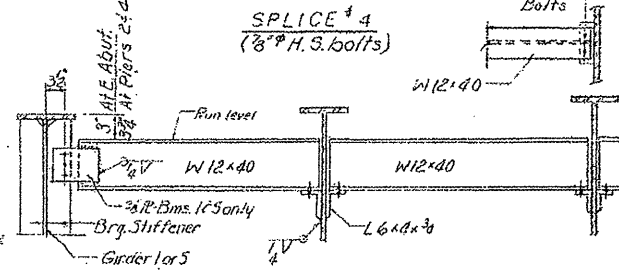
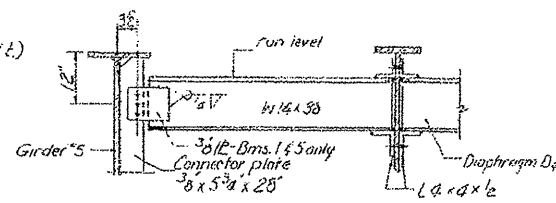
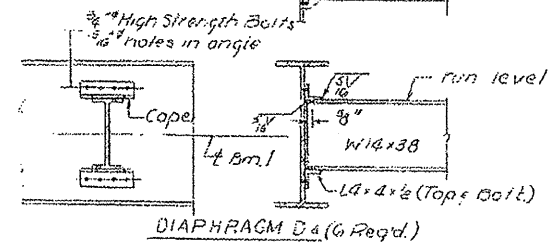
DIAPHRAGM D5
(6 Req'd)



DIAPHRAGM D1
(6 Req'd)



DIAPHRAGM D
(6 Req'd)

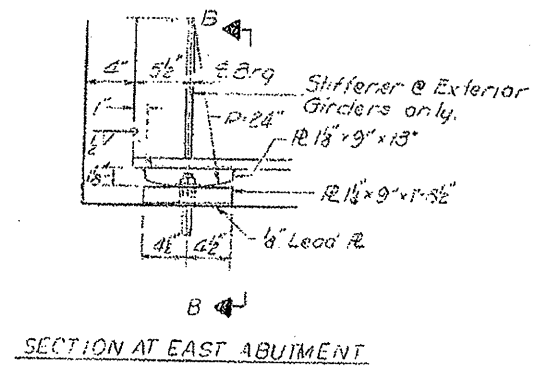


FOR INFORMATION ONLY

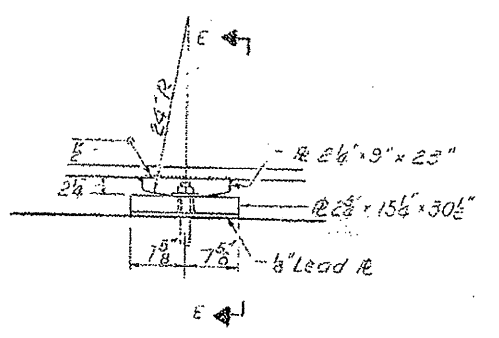
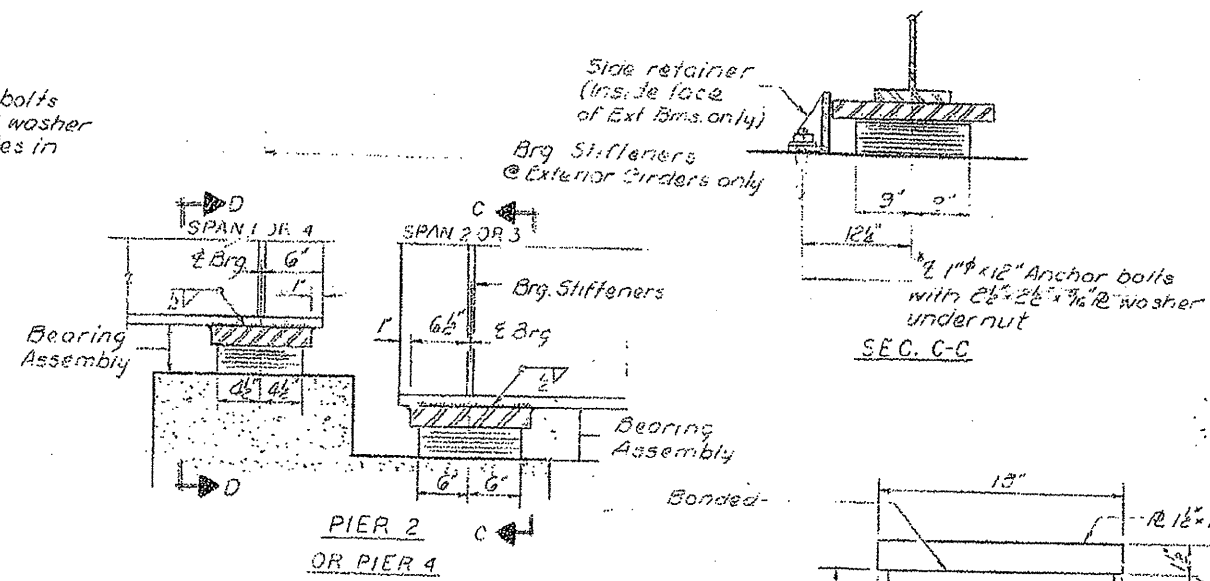
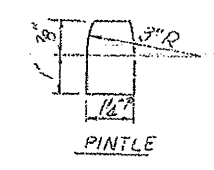
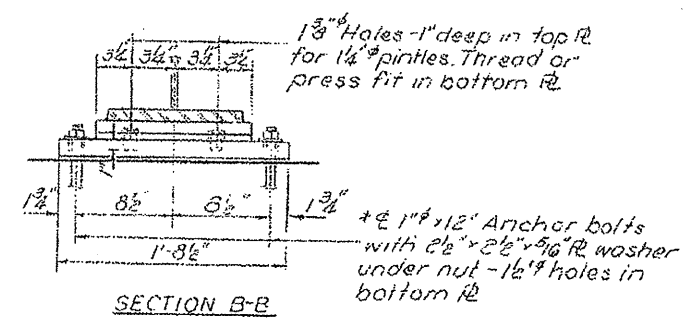
PLAN SHEETS

S.N.029-0036

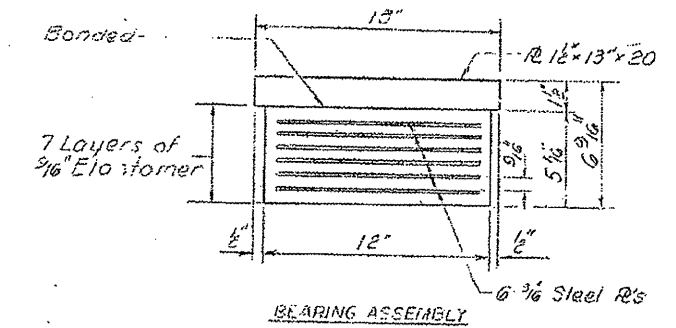
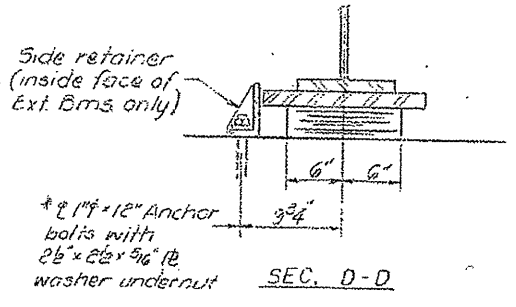
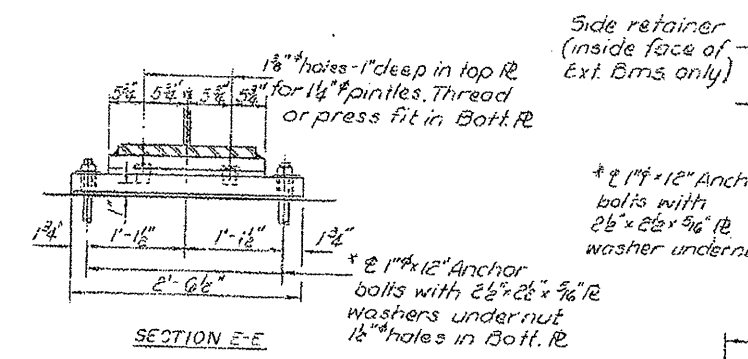
ROUTE	SECTION	COUNTY	TOTAL SHEETS	SHEET NO.
VARIOUS	D4 METALLIZING 2010	VARIOUS	22	22



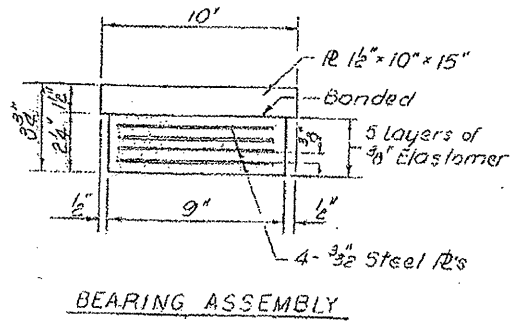
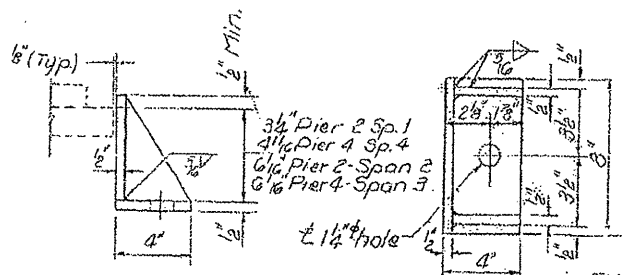
FIXED BEARING



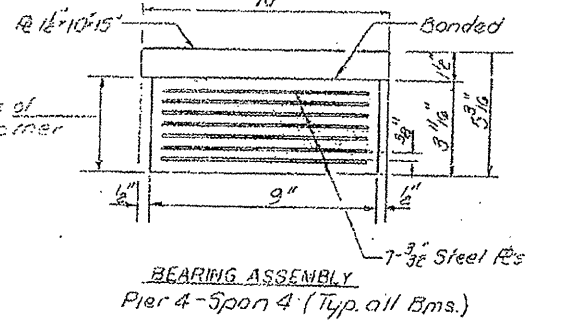
FIXED BEARING



TYPE I ELASTOMERIC EXP. BEARING
Pier 2-Span 2 or Pier 4-Span 3 (Typ. all Bms.)



TYPE I ELASTOMERIC EXP. BEARING
Pier 2-Span 1 (Typ. all Bms.)



BEARING ASSEMBLY
Pier 4-Span 4 (Typ. all Bms.)

FOR INFORMATION ONLY 029-0036 BEARINGS

PLAN SHEETS