

STATE OF ILLINOIS
DEPARTMENT OF TRANSPORTATION

GENERAL NOTES

Reinforcement bars shall conform to the requirements of ASTM A 706 Gr 60. See Special Provisions.

Reinforcement bars designated (E) shall be epoxy coated.

Plan dimensions and details relative to existing plans are subject to nominal construction variations. The Contractor shall field verify existing dimensions and details affecting new construction and make necessary approved adjustments prior to construction or ordering of materials. Such variations shall not be cause for additional compensation for a change in scope of the work, however, the Contractor will be paid for the quantity actually furnished at the unit price bid for the work.

Existing reinforcement bars extending into the removal area shall be cleaned, straightened and incorporated into the new construction. Any reinforcement bars that are damaged during concrete removal shall be replaced with an approved bar splicer or anchorage system. Cost included with Concrete Removal.

Areas of deck repairs shown are estimated. The Engineer shall show actual locations of deck repairs on As-built Plans.

Joint openings shall be adjusted according to Article 520.04 of the Standard Specifications when the deck is poured at an ambient temperature other than 50° F.

Prior to pouring the new concrete deck, all heavy or loose rust, loose mill scale, and other loose or potentially detrimental foreign material shall be removed from the surfaces in contact with concrete. Tightly adhered paint may remain unless otherwise noted. Removal shall be accomplished by methods that will not damage the steel and the cost will be included in the pay item covering removal of the existing concrete.

The existing structural steel coating contains lead. The Contractor shall take appropriate precautions to deal with the presence of lead on this project.

DESIGN STRESSES

PRECAST UNITS

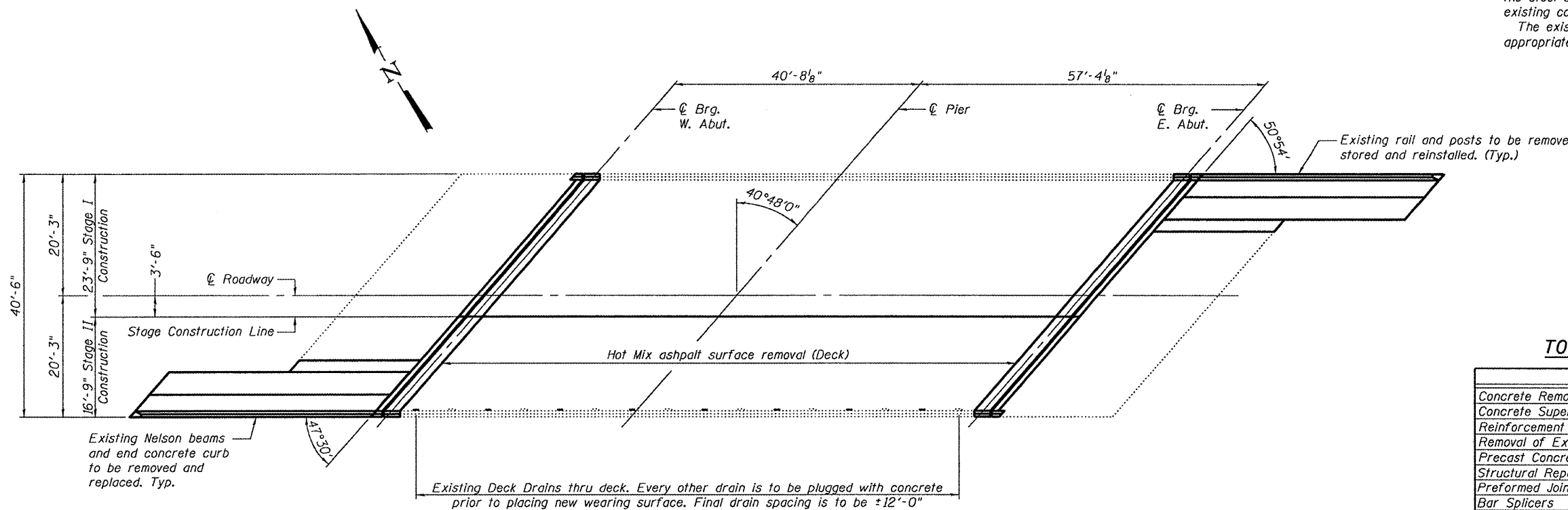
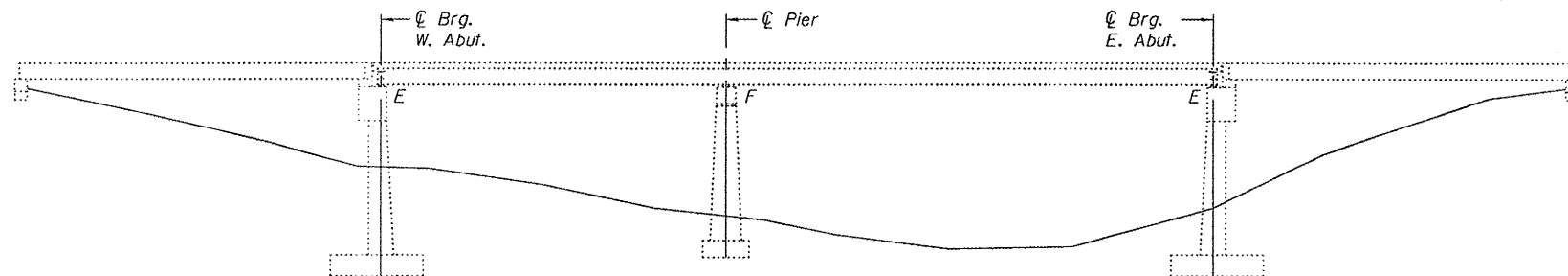
$f'_c = 4,500$ psi
 $f'_{ci} = 1,800$ psi
 $f'_s = 20,000$ psi
 $h = 8$

Allow 25 pounds per square foot for future wearing surface.

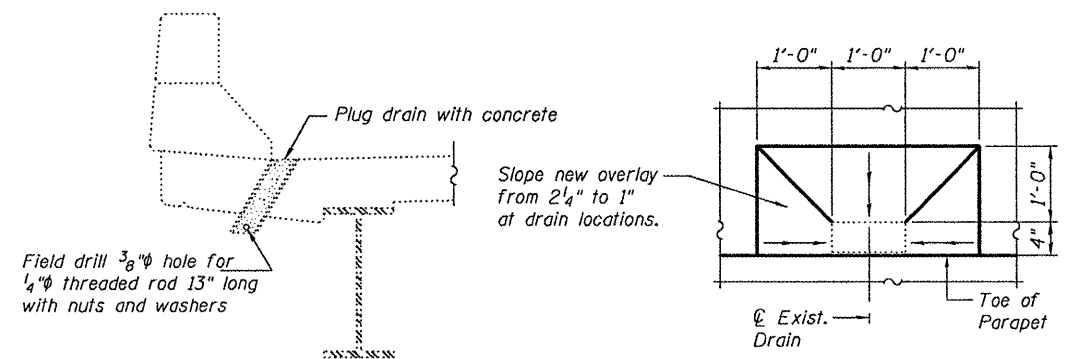
Design specifications: 2002 AASHTO

TOTAL BILL OF MATERIAL

ITEM	UNIT	QUANTITY
Concrete Removal	Cu. Yd.	14.8
Concrete Superstructure	Cu. Yd.	20.4
Reinforcement Bars, Epoxy Coated	Pound	2,720
Removal of Existing PC Units	Sq. Ft.	600
Precast Concrete Bridge Slab	Sq. Ft.	600
Structural Repair of Concrete	Sq. Ft.	148
Preformed Joint Strip Seal	Foot	106
Bar Splicers	Each	24
Removing and Re-erecting Existing Railing	Foot	80
Approach Slab Removal	Sq. Yd.	9
Bridge Deck Hydro-Scarification $\frac{1}{2}$ "	Sq. Yd.	430
Bridge Deck latex Concrete Overlay, $2\frac{1}{4}$ "	Sq. Yd.	410
Protective Coat	Sq. Yd.	445
Bridge Deck Grooving	Sq. Yd.	430
Hot-Mix Asphalt Surface Removal (Deck)	Sq. Yd.	430
Plug Existing Deck Drains	Each	7
Deck Slab Repair (Full Depth)	Sq. Yd.	25



Existing Deck Drains thru deck. Every other drain is to be plugged with concrete prior to placing new wearing surface. Final drain spacing is to be ±12'-0"



DRAIN PLUG DETAIL

OVERLAY SLOPE DETAIL AT DRAIN LOCATIONS



DESIGNED <i>Jim D. Johnson</i>	EXAMINED <i>Ralph E. Anderson</i>
CHECKED <i>Adrian T. Holloway</i>	PASSED <i>Ralph E. Anderson</i>
DRAWN <i>Drew Christopher</i>	
CHECKED <i>IJL ATH</i>	

March 11, 2010

Expires: November 30, 2010

PLAN AND ELEVATION
SN 029-0027

SHEET NO. 1	F.A. RTE.	SECTION	COUNTY	TOTAL SHEETS	SHEET NO.
	622	(128BR-1)I	Fulton	23	12
7 SHEETS	FED. ROAD DIST. NO.		ILLINOIS	FED. AID PROJECT	
				CONTRACT NO. 68927	