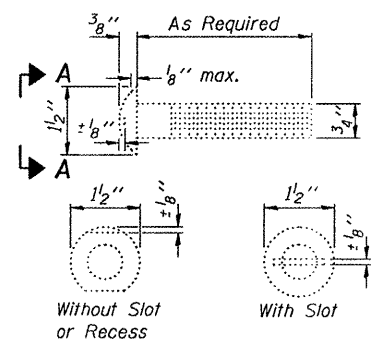
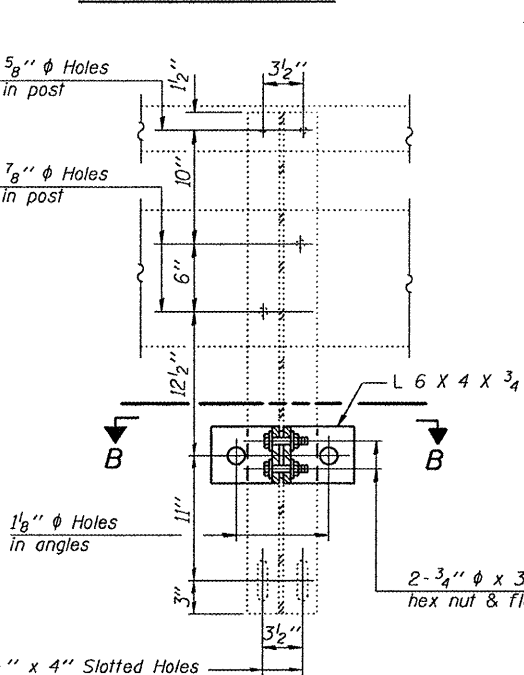


STATE OF ILLINOIS
DEPARTMENT OF TRANSPORTATION

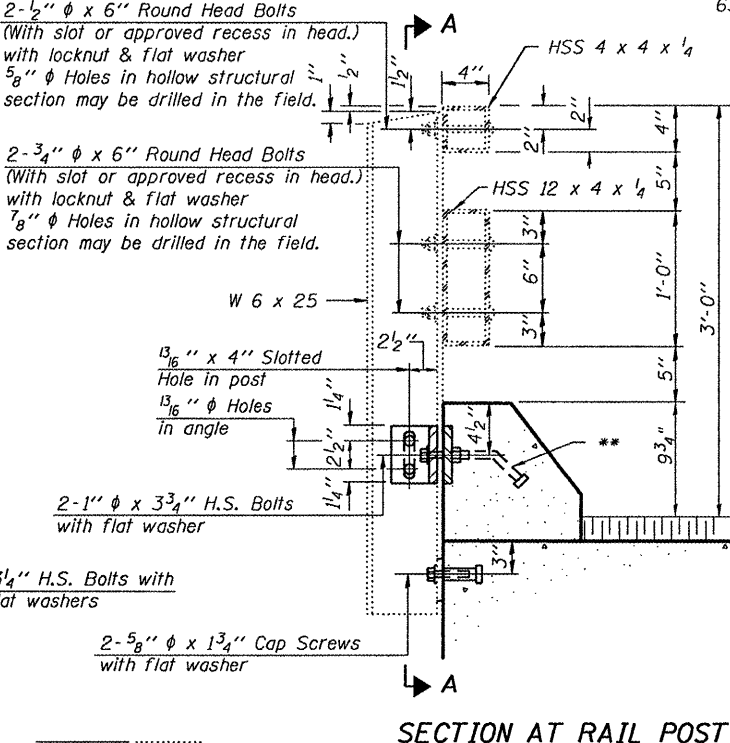


VIEW A-A
ROUND HEAD BOLT

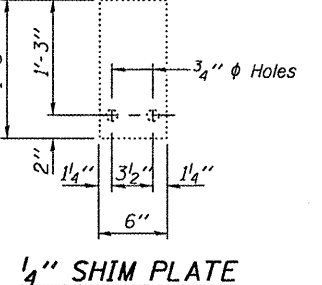
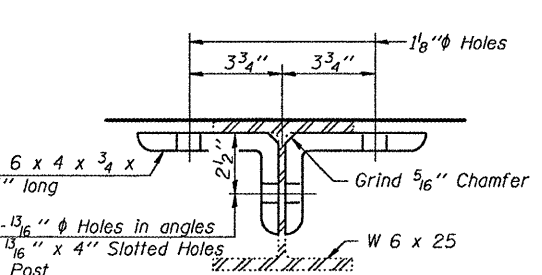


SECTION A-A

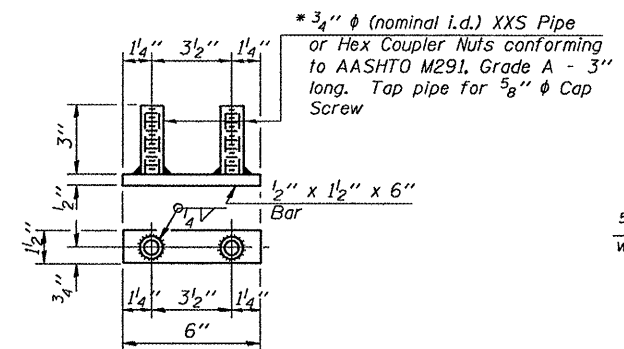
SECTION B-B



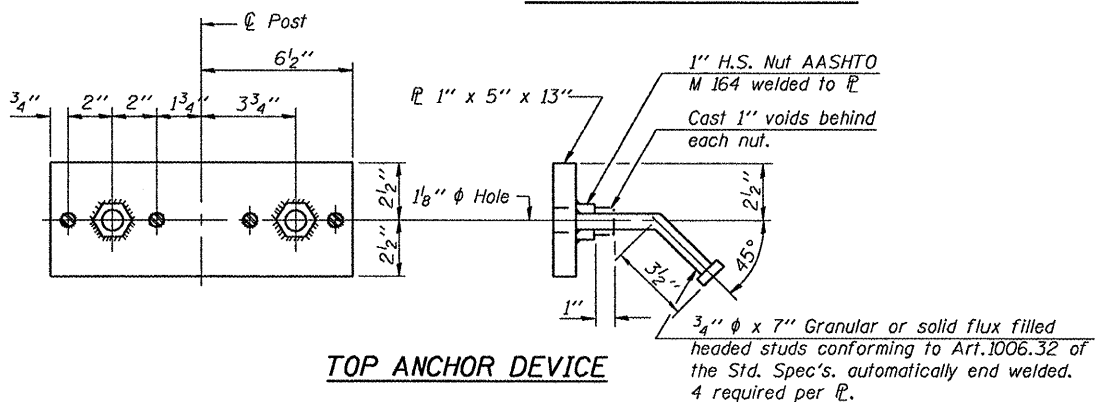
SECTION AT RAIL POST



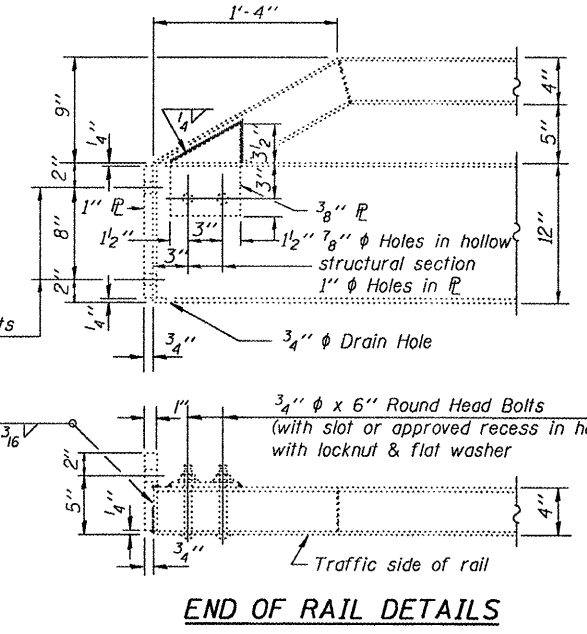
1/4" SHIM PLATE



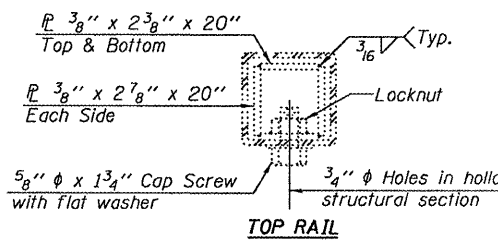
BOTTOM ANCHOR DEVICE



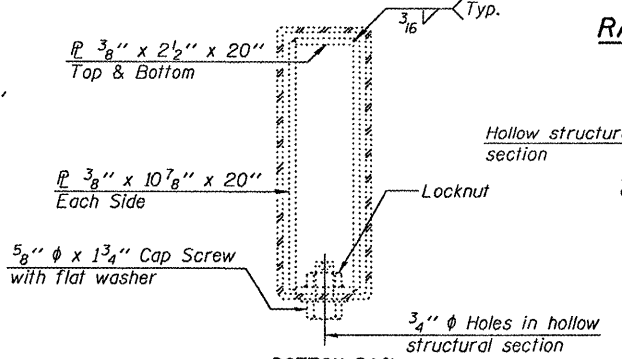
TOP ANCHOR DEVICE



END OF RAIL DETAILS

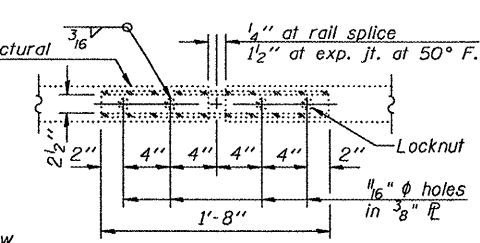


TOP RAIL



BOTTOM RAIL

RAIL SPLICE CONNECTION AT EXPANSION JT.



PLAN-BOTT. SPLICE @ TYPICAL

BILL OF MATERIAL

Item	Unit	Quantity
Removing and Re-erecting Existing Railing	Foot	80

Notes:
All field drilled holes shall be coated with an approved zinc rich paint before erection.
For multi-span bridges, sufficient 1/4" x 6" x 1'-5" galvanized steel shims shall be provided to align rail between adjacent spans. Cost included with Steel Railing, Type T-1.
All steel rail elements shall be galvanized according to Article 509.05 of the Standard Specifications.
** The studs of the anchor devices shall be placed below the top reinforcement bars and the outermost longitudinal reinforcement bar shall be placed directly above the studs of the rail post anchor device.

DESIGNED	I.J.L.
CHECKED	A.T.H.
DRAWN	Drew Christopher
CHECKED	I.J.L. A.T.H.

EXAMINED	March 11, 2010
EXAMINED	Carl P... ENGINEER OF STRUCTURAL SERVICES
PASSED	Ralph E. Anderson ENGINEER OF BRIDGES AND STRUCTURES

R-24A 11-1-09 (9'-6" Maximum Post Spacing)

RAILING DETAILS
SN 029-0027

SHEET NO. 7	F.A. RTE.	SECTION	COUNTY	TOTAL SHEETS	SHEET NO.
7 SHEETS	622	(128BR-1)I	Fulton	23	18
FED. ROAD DIST. NO.			ILLINOIS FED. AID PROJECT		
				CONTRACT NO. 68927	