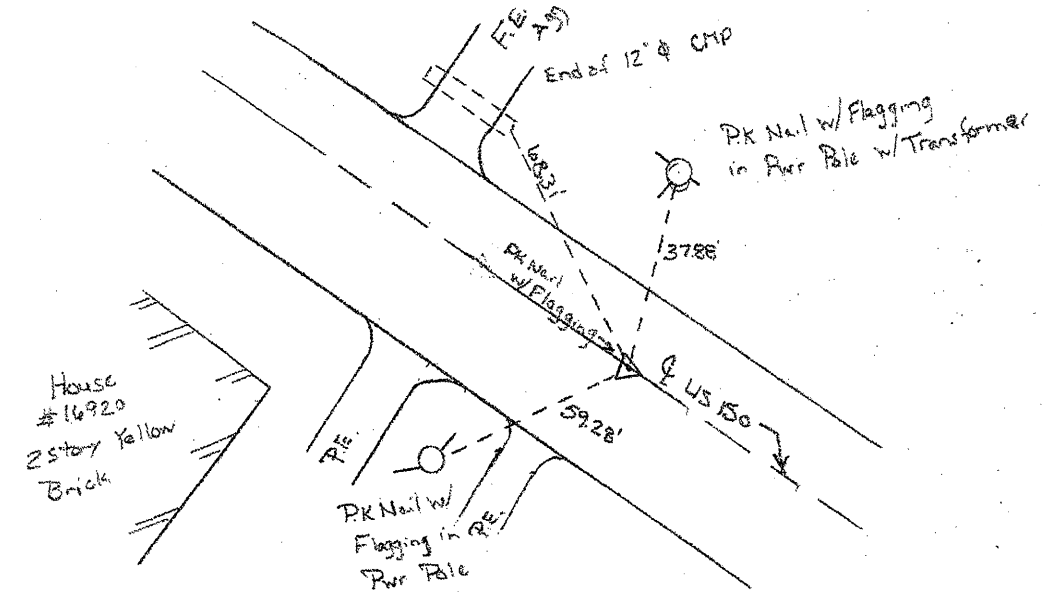


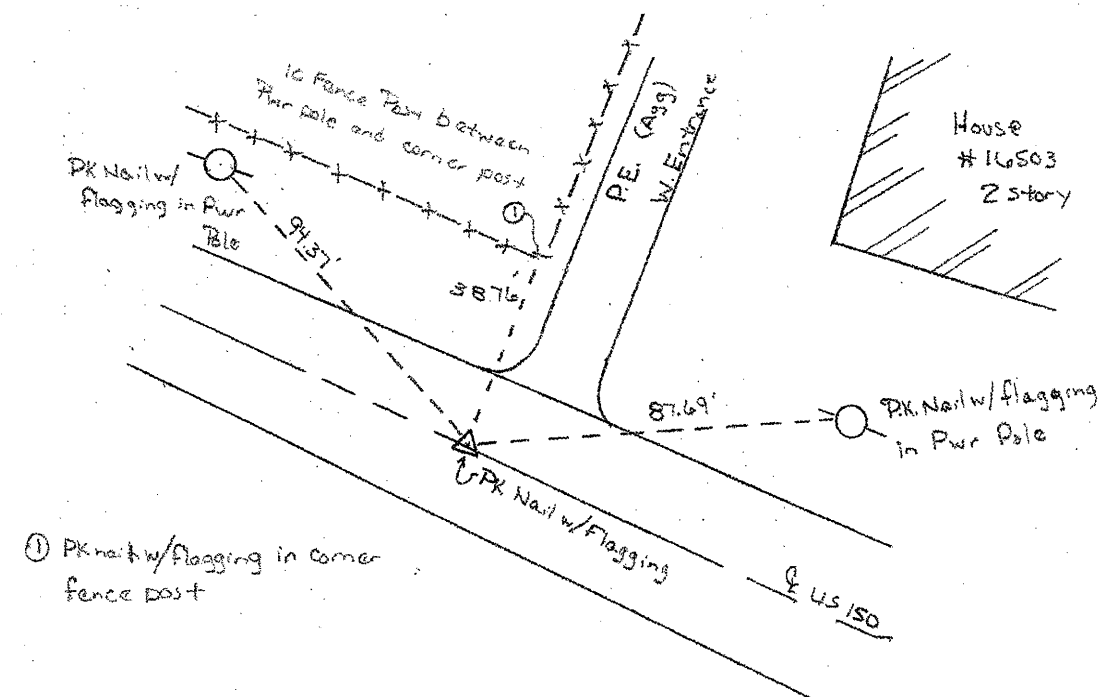
P.O.T. 1 STA 110+48.53

Location just west of Stone Rd



P.O.T. 2 STA 129+12.18

Location east of Culbert



① PK Nail w/ Flagging in corner fence post

FILE NAME = 68932 sheets.dgn	USER NAME = k1merkk	DESIGNED -	REVISED -	<b>STATE OF ILLINOIS DEPARTMENT OF TRANSPORTATION</b>	<b>RECOVERY TIES</b>			F.A.S. RTE. 2402	SECTION 112C-3	COUNTY PEORIA	TOTAL SHEETS 18	SHEET NO. 8
	PLOT SCALE = 40.0000' / IN.	DRAWN -	REVISED -		NOT TO SCALE	SHEET NO. 1 OF 1 SHEETS	STA. 110+48.53 TO STA. 129+12.18	<b>CONTRACT NO. 68932</b>				
	PLOT DATE = 2/10/2010	CHECKED -	REVISED -		ILLINOIS FED. AID PROJECT							
		DATE -	REVISED -									