

F.A.S. RTE.	SECTION	COUNTY	TOTAL SHEETS	SHEET NO.
2402	112C-3	PEORIA	18	1
		ILLINOIS	CONTRACT NO. 68932	

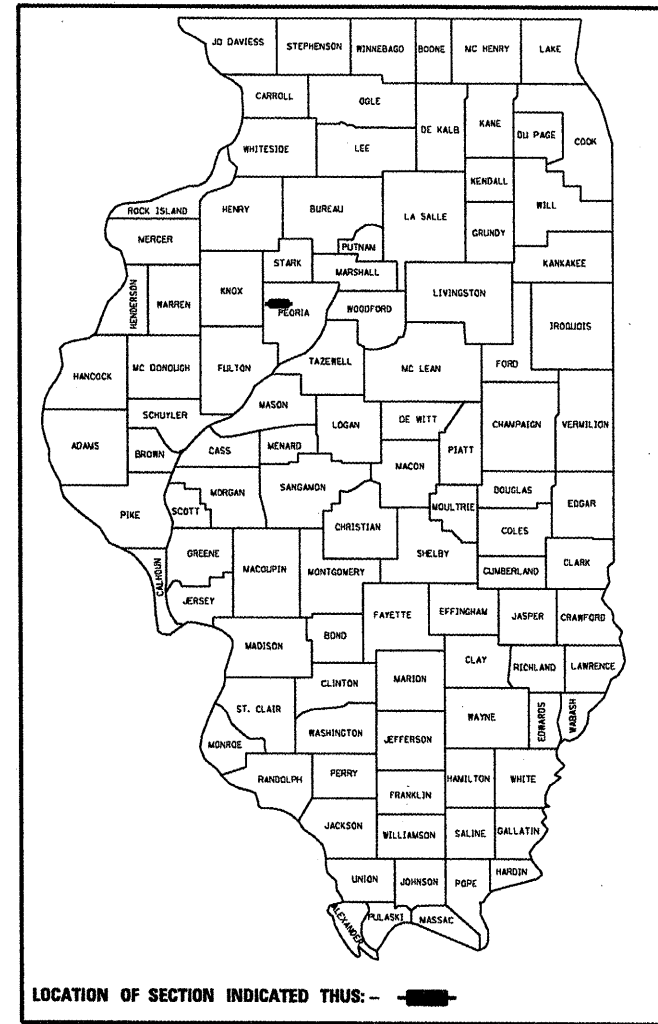
D-94-098-09

STATE OF ILLINOIS
DEPARTMENT OF TRANSPORTATION
DIVISION OF HIGHWAYS

**PROPOSED
HIGHWAY PLANS**

FAS 2402 (US ROUTE 150)

112C-3
PEORIA COUNTY
C-94-159-09



THIS PROJECT CONSISTS OF REMOVAL AND REPLACEMENT OF 3' X 3' BOX CULVERT CARRYING US 150 OVER UNNAMED DRAINAGE DITCH, 0.6 MILES EAST OF BRIMFIELD AND OTHER COLLATERAL WORK.

STATE OF ILLINOIS
DEPARTMENT OF TRANSPORTATION
DIVISION OF HIGHWAYS

SUBMITTED Feb 20 2010

[Signature]
DEPUTY DIRECTOR OF HIGHWAYS, REGION ENGINEER

March 19 2010
Scott E. Stitt, P.E.
ACTING ENGINEER OF DESIGN AND ENVIRONMENT

March 19 2010
Christine M. Reeder
DIRECTOR OF HIGHWAYS, CHIEF ENGINEER

PRINTED BY THE AUTHORITY
OF THE STATE OF ILLINOIS

INDEX OF SHEETS

1. COVER SHEET
2. COMMITMENTS, STATUS OF UTILITIES, GENERAL NOTES, JOB SPECIFIC NOTES
- 3.-5. SUMMARY OF QUANTITIES
6. TYPICAL SECTION
7. SCHEDULES OF QUANTITIES
8. RECOVERY TIES
9. PLAN OF PROPOSED IMPROVEMENT
- 10.-11. ROAD CLOSURE DETOUR DETAILS
12. RIGHT-OF-WAY PLANS
13. DETAIL OF EXCAVATION AND BACKFILL FOR PRECAST BOX CULVERTS
14. RIPRAP DITCH FOR EROSION PROTECTION DETAIL
15. DROP BOX NO. 1 DETAIL
- 16.-18. CROSS SECTIONS

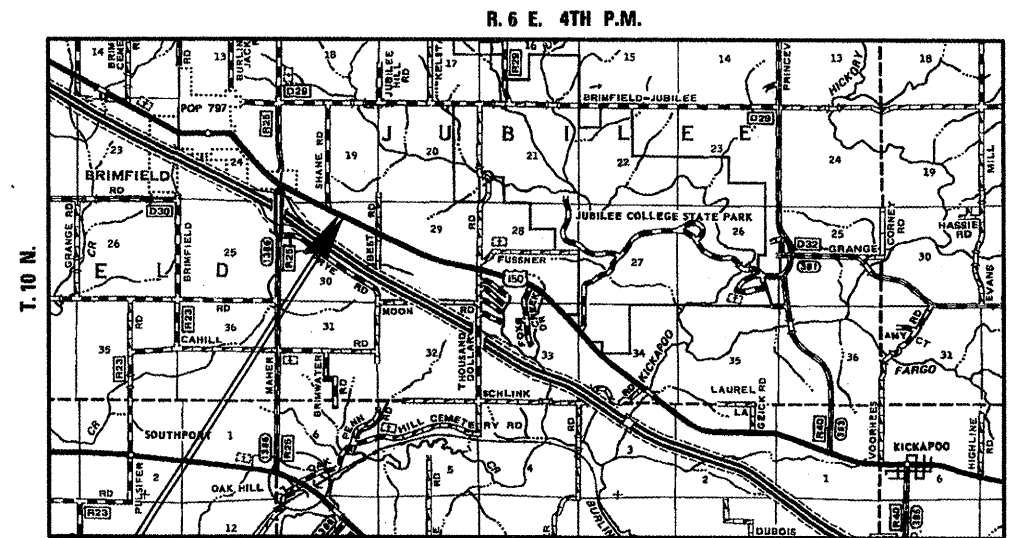
HIGHWAY STANDARDS

442201-03 666001-01
701001-02 701006-03
701201-03 701301-03
701311-03 701901-01
BLR 21-8

ADT = 3,350
5% TRUCK TRAFFIC

J.U.L.I.E.
JOINT UTILITY LOCATION INFORMATION FOR EXCAVATION
1-800-892-0123
OR 811

PROJECT ENGINEER: M. ADDIS
PROJECT MANAGER: K. KILMAN
CONTRACT NO. 68932
CATALOG NO. 034314-00D



PROJECT ENDS STA. 124 + 50
PROJECT BEGINS STA. 119 + 50

MAP SCALE : [scale bar] = 1 MILE

GROSS LENGTH = NET LENGTH = 500 FT. = 0.0946 MILES

COMMITMENTS

COMMITMENTS ARE NOT TO BE ALTERED WITHOUT THE WRITTEN APPROVAL OF ALL PARTIES TO WHICH THE COMMITMENT WAS MADE.

404 PERMIT - THE CONTRACTOR MUST MEET THE REQUIREMENTS STIPULATED UNDER THE 404 PERMIT TYPE NATIONWIDE #14 AND ADDITIONAL REQUIREMENTS AS STATED (SEE SPECIAL PROVISIONS). THIS PERMIT EXPIRES ON XX PERMIT NO. XX.

SECTION 401 WATER QUALITY CERTIFICATIONS - THE CONTRACTOR MUST MEET THE REQUIREMENTS STIPULATED IN THE FACT SHEET INCLUDED WITH THE NATIONWIDE PERMIT (SEE SPECIAL PROVISIONS).

STATUS OF UTILITIES

AT&T

MR. STEVE BATEMAN
2315 N. UNIVERSITY STREET
PEORIA, IL 61604

ROUTE	OFFSET	LOCATION	TYPE OF UTILITY	TYPE OF CONFLICT	DISPOSITION
US 150	41' RT.	STA. 121+00 TO STA. 122+50	BURIED FIBER OPTIC	CULVERT/DITCH	RELOCATE

AMERENCILCO (ELECTRIC)

MR. JOSEPH GLAD
8420 N. UNIVERSITY STREET
PEORIA, IL 61615

ROUTE	OFFSET	LOCATION	TYPE OF UTILITY	TYPE OF CONFLICT	DISPOSITION
US 150	38' LT.	STA. 121+60	POWER POLE	CULVERT/DITCH	RELOCATE

AMERENCILCO (GAS)

MR. KENT KOWALSKE
8420 N. UNIVERSITY STREET
PEORIA, IL 61615

ROUTE	OFFSET	LOCATION	TYPE OF UTILITY	TYPE OF CONFLICT	DISPOSITION
US 150	48' LT.	STA. 121+00 TO STA. 122+50	10" HIGH-PRESSURE GAS	CULVERT/DITCH	RELOCATE

COMCAST

MR. BRUCE VON BRETHHORST
2315 N. DRIES LANE
PEORIA, IL 61604

ROUTE	OFFSET	LOCATION	TYPE OF UTILITY	TYPE OF CONFLICT	DISPOSITION
US 150	38' LT	STA. 121+60	POWER POLE	CULVERT/DITCH	RELOCATE

VERIZON NORTH

MR. JASON KLEIN
111 SOUTH MAIN STREET
KEWANEE, IL 61443

ROUTE	OFFSET	LOCATION	TYPE OF UTILITY	TYPE OF CONFLICT	DISPOSITION
US 150	45' RT.	STA. 121+00 TO STA. 122+50	BURIED FIBER OPTIC	CULVERT/DITCH	RELOCATE
US 150	47' RT.	STA. 121+00 TO STA. 122+50	BURIED FIBER OPTIC	CULVERT/DITCH	RELOCATE

GENERAL NOTES

UTILITIES - LOCATIONS / INFORMATION ON PLANS

THE LOCATIONS OF EXISTING WATER MAINS, GAS MAINS, SEWERS, ELECTRIC POWER LINES, TELEPHONE LINES AND OTHER UTILITIES AS SHOWN ON THE PLANS ARE BASED ON CAREFUL FIELD INVESTIGATION AND THE BEST INFORMATION AVAILABLE, BUT THEY ARE NOT GUARANTEED, UNLESS ELEVATIONS ARE SHOWN - ALL UTILITY LOCATIONS SHOWN ON THE CROSS SECTIONS ARE BASED ON THE APPROXIMATE DEPTH SUPPLIED BY THE UTILITY COMPANY. IT SHALL BE THE CONTRACTOR'S RESPONSIBILITY TO ASCERTAIN THEIR EXACT LOCATION FROM THE UTILITY COMPANIES AND BY FIELD INSPECTION.

TREE REMOVAL

THE DISTRICT FOUR TREE COMMITTEE SHOULD BE CONTACTED AND PRIOR APPROVAL OBTAINED FOR ANY TREE REMOVAL BEYOND THE LIMITS /LOCATIONS INCLUDED IN THE PLANS.

ENVIRONMENTAL REVIEWS

PRIOR TO THE USE OF ANY PROPOSED BORROW AREAS, USE AREAS (TEMPORARY ACCESS ROADS, DETOURS, RUN-AROUNDS, ETC.) AND/OR WASTE AREAS, THE CONTRACTOR SHALL FILE THE REQUIRED ENVIRONMENTAL RESOURCE REQUEST SURVEYS ACCORDING TO SECTION 107.22 OF THE STANDARD SPECIFICATIONS. THESE SURVEYS ARE REQUIRED IN ORDER FOR THE DEPARTMENT TO CONDUCT CULTURAL AND BIOLOGICAL RESOURCE SURVEYS FOR THE PROPOSED SITE.

PRIOR TO ANY WASTE MATERIALS BEING REMOVED FROM THE CONSTRUCTION SITE THE REQUIRED ENVIRONMENTAL RESOURCE SURVEYS WILL NEED TO BE OBTAINED AND FILED BY THE CONTRACTOR. EXCESS WASTE PRODUCTS REMOVED FROM THE CONSTRUCTION SITE SHALL BE DISPOSED OF AS REQUIRED IN SECTION 202.03 OF THE STANDARD SPECIFICATIONS.

ANY PROTRUDING METAL BARS SHALL BE REMOVED PRIOR TO THE DISPOSAL OF BROKEN CONCRETE AT APPROVED DISPOSAL SITES.

THE REQUIRED ENVIRONMENTAL RESOURCE DOCUMENTATION SHALL INCLUDE THE FOLLOWING:

- * BDE FORM 2289 (ENVIRONMENTAL SURVEY REQUEST)
- * A LOCATION MAP SHOWING THE SIZE LIMITS AND LOCATION OF THE USE AREA
- * SIGNED PROPERTY OWNER AGREEMENT FORM - D4 P10100
- * COLOR PHOTOGRAPHS DEPICTING THE USE AREA
- * BORROW AREA ENTRY AGREEMENT FORM - D4 P10101

PLEASE NOTE THAT A MINIMUM OF TWO WEEKS SHALL BE ALLOWED FOR THE DISTRICT TO OBTAIN THE REQUIRED ENVIRONMENTAL CLEARANCES.

ORDERING LENGTH CONFIRMATION - DRAINAGE ITEMS

THE CONTRACTOR SHALL CONSULT WITH THE ENGINEER IN REGARD TO THE EXACT LENGTH OF THE BOX /PIPE CULVERTS, STORM SEWERS, AND /OR PIPE DRAINS REQUIRED PRIOR TO ORDERING THESE ITEMS.

HOT-MIX ASPHALT MIXTURE REQUIREMENTS

MIXTURE USE(S):	PATCH (LOWER LIFTS)	PATCH (TOP LIFT)
ACFG:	PG 64-22	PG 64-22
RAP % (MAX)**:	25%	15%
DESIGN AIR VOIDS:	4.0% @ N=50	4.0% @ N=50
MIXTURE COMPOSITION (GRADATION MIXTURE):	IL 19.0	IL 9.5 OR IL 12.5
FRICTION AGGREGATE:	N.A.	MIX D

** IF RAP OPTION IS SELECTED, THE ASPHALT CEMENT GRADE MAY NEED TO BE ADJUSTED; THIS WILL BE DETERMINED BY THE ENGINEER.

JOB SPECIFIC NOTES

SUMMARY OF QUANTITIES

CONSTRUCTION TYPE CODE	
Y007	
100% STATE	

CODE No.	ITEM	UNIT	Tot.QTY		
20200100	EARTH EXCAVATION	CU YD	109	109	
20201200	REMOVAL AND DISPOSAL OF UNSUITABLE MATERIAL	CU YD	27	27	
20400800	FURNISHED EXCAVATION	CU YD	44	44	
21001000	GEOTECHNICAL FABRIC FOR GROUND STABILIZATION	SQ YD	153	153	
21101615	TOPSOIL FURNISH PLACE, 4" AND	SQ YD	1278	1278	
25000210	SEEDING, CLASS 2A	ACRE	0.25	0.25	
25000400	NITROGEN FERTILIZER NUTRIENT	POUND	24	24	
25000500	PHOSPHORUS FERTILIZER NUTRIENT	POUND	24	24	
25000600	POTASSIUM FERTILIZER NUTRIENT	POUND	24	24	
25100630	EROSION CONTROL BLANKET	SQ YD	1278	1278	

SUMMARY OF QUANTITIES

CONSTRUCTION TYPE CODE	
Y007	
100% STATE	

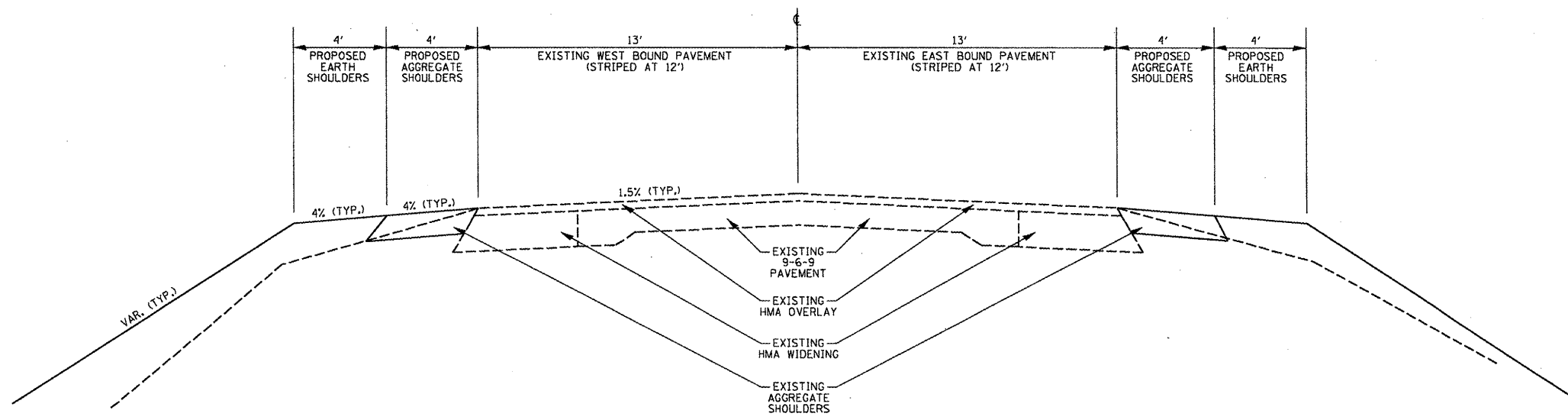
CODE No.	ITEM	UNIT	Tot.QTY		
28000250	TEMPORARY EROSION CONTROL SEEDING	POUND	27	27	
28100807	STONE DUMPED RIPRAP, CLASS A4	TON	122	122	
28200200	FILTER FABRIC	SQ YD	183	183	
31101000	SUB-BASE GRANULAR MATERIAL, TYPE B	TON	105	105	
44000100	PAVEMENT REMOVAL	SQ YD	98	98	
44201807	CLASS D PATCHES, TYPE III, 13 INCH	SQ YD	15	15	
44201809	CLASS D PATCHES, TYPE IV, 13 INCH	SQ YD	98	98	
48101200	AGGREGATE SHOULDERS, TYPE B	TON	61	61	
50100100	REMOVAL OF EXISTING STRUCTURES	EACH	1	1	
54001001	BOX CULVERT END SECTION, CULVERT NO. 1	EACH	1	1	

SUMMARY OF QUANTITIES

CONSTRUCTION TYPE CODE

Y007	
100% STATE	

CODE No.	ITEM	UNIT	Tot.QTY		
54010303	PRECAST CONCRETE BOX CULVERT 3' X 3'	FOOT	82	82	
66600105	FURNISHING AND ERECTING RIGHT-OF-WAY MARKERS	EACH	8	8	
67100100	MOBILIZATION	L SUM	1	1	
70101800	TRAFFIC CONTROL AND PROTECTION,(SPECIAL)	L SUM	1	1	
70106800	CHANGEABLE MESSAGE SIGN	CAL MO	1	1	
X0323660	DROP BOX NO. 1	EACH	1	1	
Z0013798	CONSTRUCTION LAYOUT	L SUM	1	1	
Z0054500	ROCK FILL	TON	55	55	

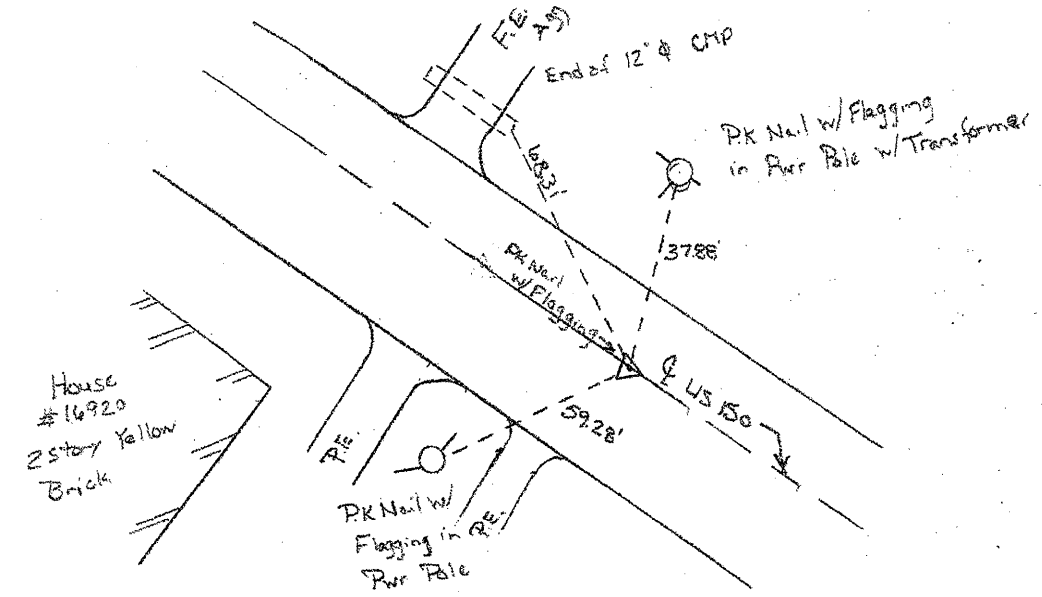


US 150
 STA. 120+81 TO STA. 122+81

FILE NAME = 68932 sheets.dgn	USER NAME = k1menkk	DESIGNED -	REVISED -	STATE OF ILLINOIS DEPARTMENT OF TRANSPORTATION	TYPICAL SECTION US 150		F.A.S. RTE.	SECTION	COUNTY	TOTAL SHEETS	SHEET NO.	
	PLOT SCALE = 40.0000' / IN.	DRAWN -	REVISED -		2402	112C-3	PEORIA	18	6			
	PLOT DATE = 2/10/2010	CHECKED -	REVISED -		NOT TO SCALE	SHEET NO. 1 OF 1 SHEETS	STA. 120+81 TO STA. 122+81	CONTRACT NO. 68932				
		DATE -	REVISED -		ILLINOIS FED. AID PROJECT							

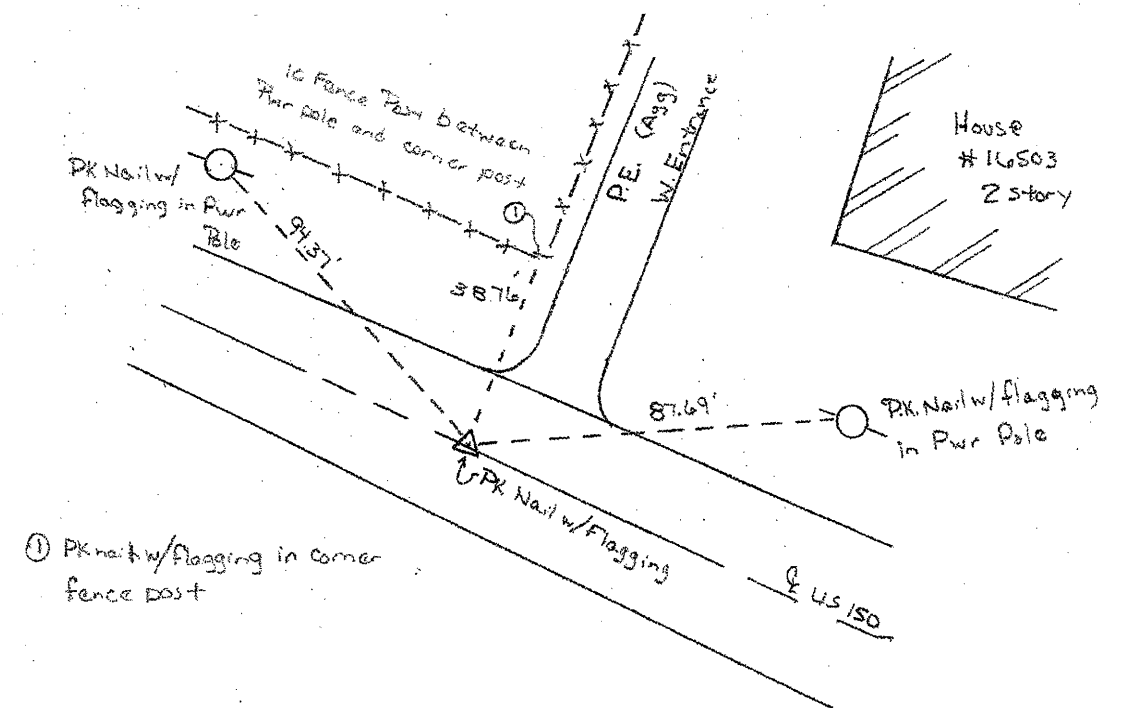
P.O.T. 1 STA 110+48.53

Location just west of Stone Rd



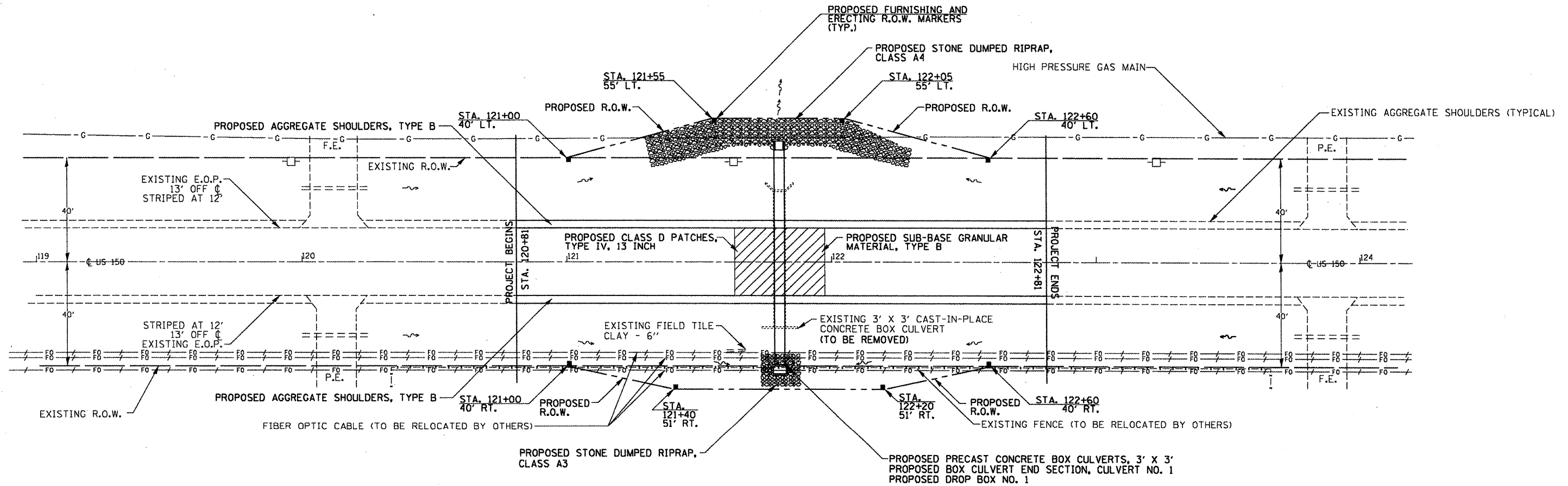
P.O.T. 2 STA 129+12.18

Location east of Culbert



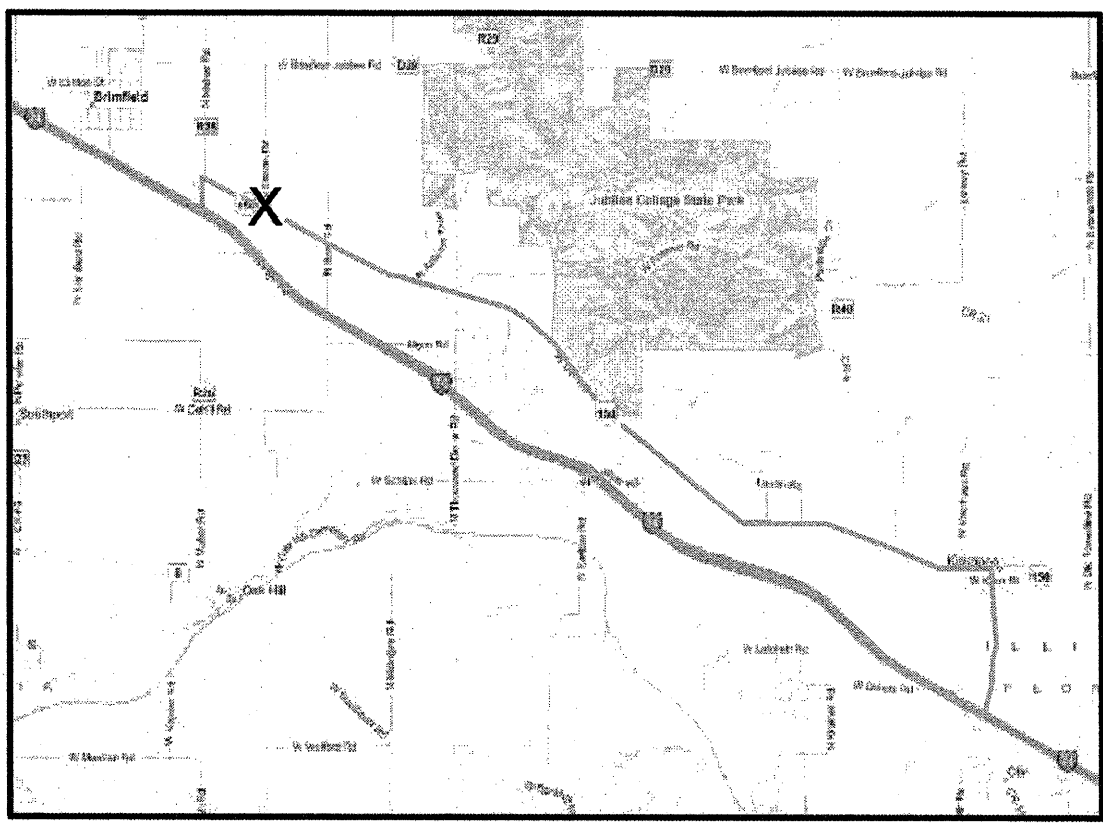
① PK Nail w/ Flagging in corner fence post

FILE NAME = 68932 sheets.dgn	USER NAME = k1merkk	DESIGNED -	REVISED -	STATE OF ILLINOIS DEPARTMENT OF TRANSPORTATION	RECOVERY TIES			F.A.S. RTE. 2402	SECTION 112C-3	COUNTY PEORIA	TOTAL SHEETS 18	SHEET NO. 8
	PLOT SCALE = 40.0000' / IN.	CHECKED -	REVISED -					CONTRACT NO. 68932				
	PLOT DATE = 2/10/2010	DATE -	REVISED -					ILLINOIS FED. AID PROJECT				
NOT TO SCALE					SHEET NO. 1 OF 1 SHEETS		STA. 110+48.53 TO STA. 129+12.18					



FILE NAME = 68932 sheets.dgn	USER NAME = k1mankk	DESIGNED - KKK	REVISED -	STATE OF ILLINOIS DEPARTMENT OF TRANSPORTATION	PLAN OF PROPOSED IMPROVEMENTS	F.A.S. RTE.	SECTION	COUNTY	TOTAL SHEETS	SHEET NO.
	PLOT SCALE = 48.0000' / IN.	DRAWN - KKK	REVISED -			2402	112C-3	PEORIA	18	9
PLOT DATE = 2/26/2018	DATE -	CHECKED -	REVISED -	SCALE: 1" = 20' SHEET NO. 1 OF 1 SHEETS STA. 119+50 TO STA. 124+50		CONTRACT NO. 68932				
ILLINOIS FED. AID PROJECT										

US 150 DETOUR ROUTE



GENERAL OVERVIEW OF DETOUR ROUTE.

Two Message Boards shall be placed near the culvert replacement three days prior to road closure. There shall be one message board per direction of travel. The message boards shall alert the motorists of the pending closure and detour route.

Following the three advanced warning days, the message boards shall be relocated to the following locations:

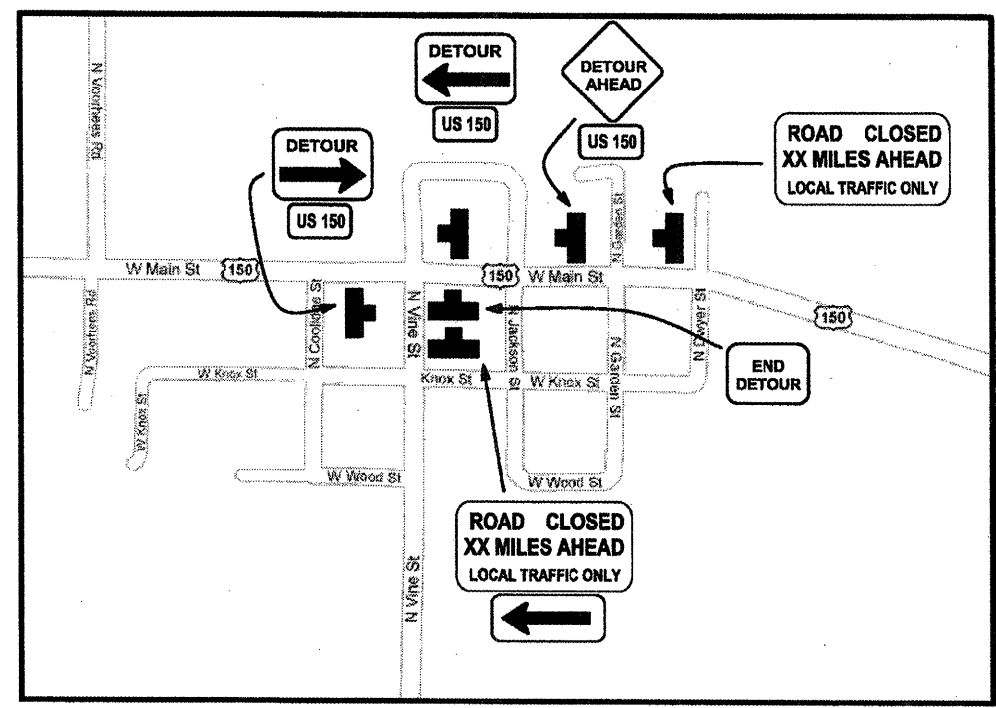
- 1) Place one message board on WB I-74 1/2 mile east of the Kicapoo/Edwards Exit.
- 2) Place one message board on EB I-74 1/2 mile west of the Brimfield Exit.

The message shall say the following:

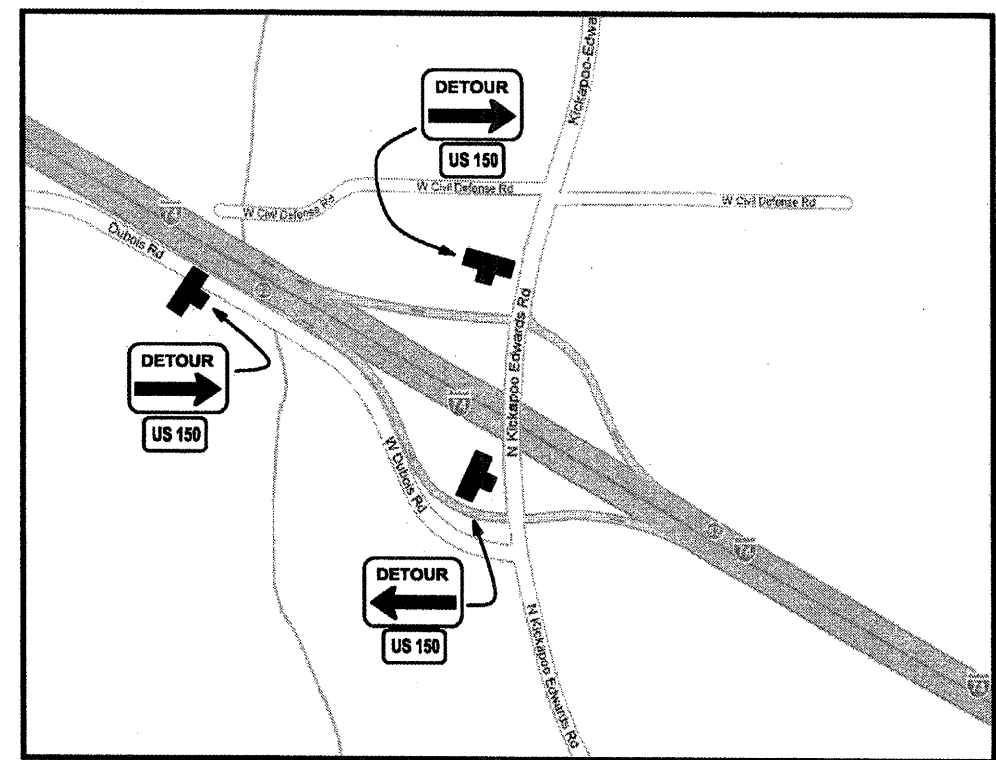
U	S	1	5	0			
C	L	O	S	E	D		
X	M	I	L	E			
1	2	3	4	5	6	7	8
E	A	S	T	O	F		
B	R	I	M	F	L	D	

U	S	1	5	0			
C	L	O	S	E	D		
X	M	I	L	E			
1	2	3	4	5	6	7	8
W	E	S	T	O	F		
K	I	C	K	A	P	O	O

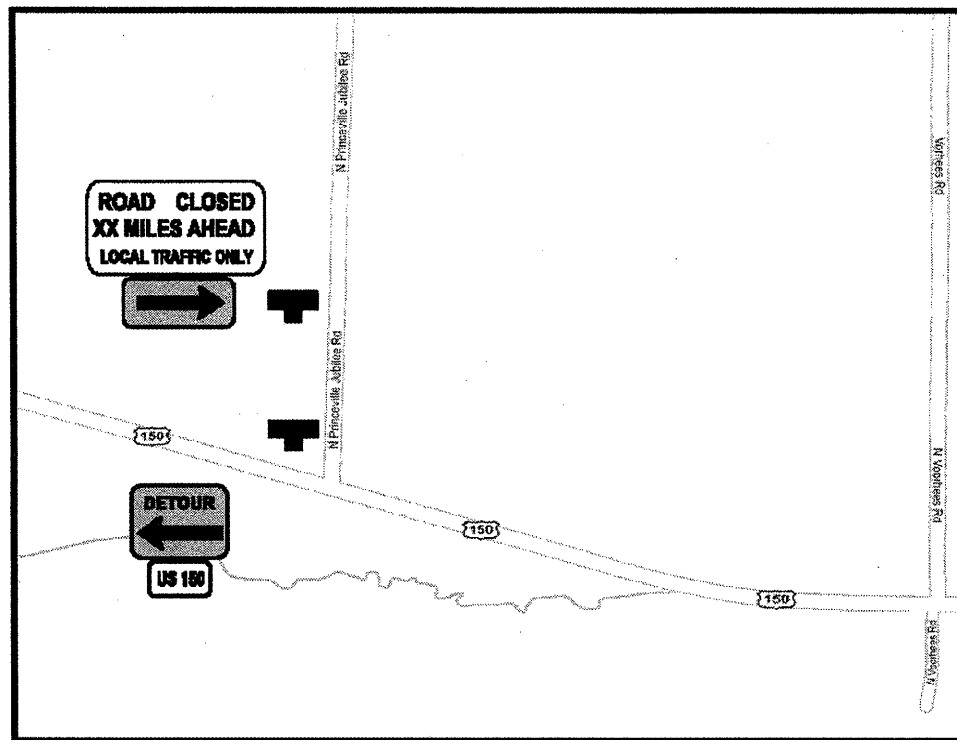
All signs shall be standard size according to the MUTCD.



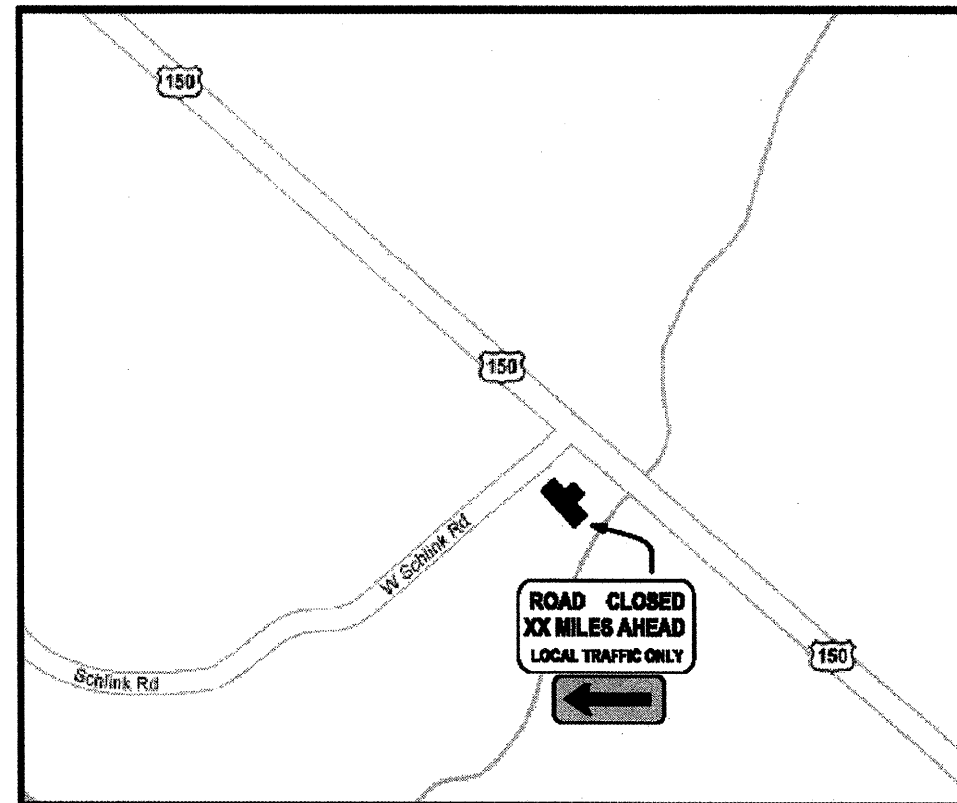
KICKAPOO, IL



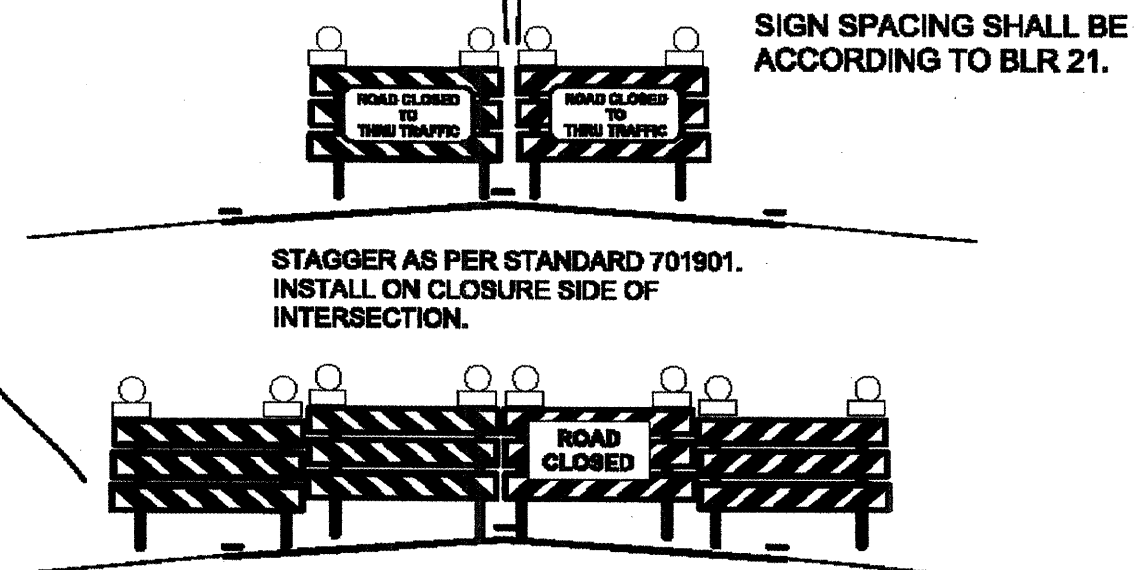
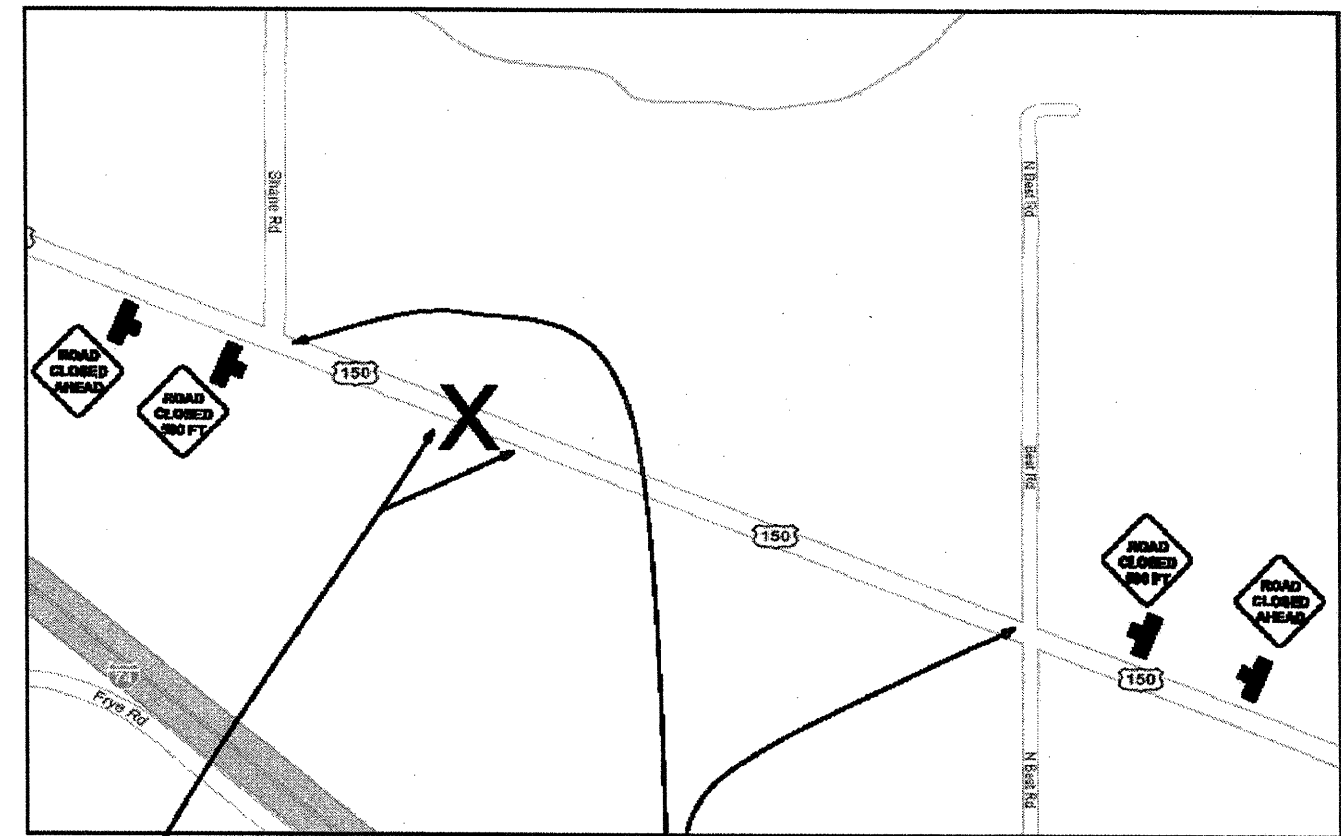
I-74/ KICKAPOO EXIT



US 150 & PRINCEVILLE-JUBILEE ROAD



US 150 & SCHLINK ROAD



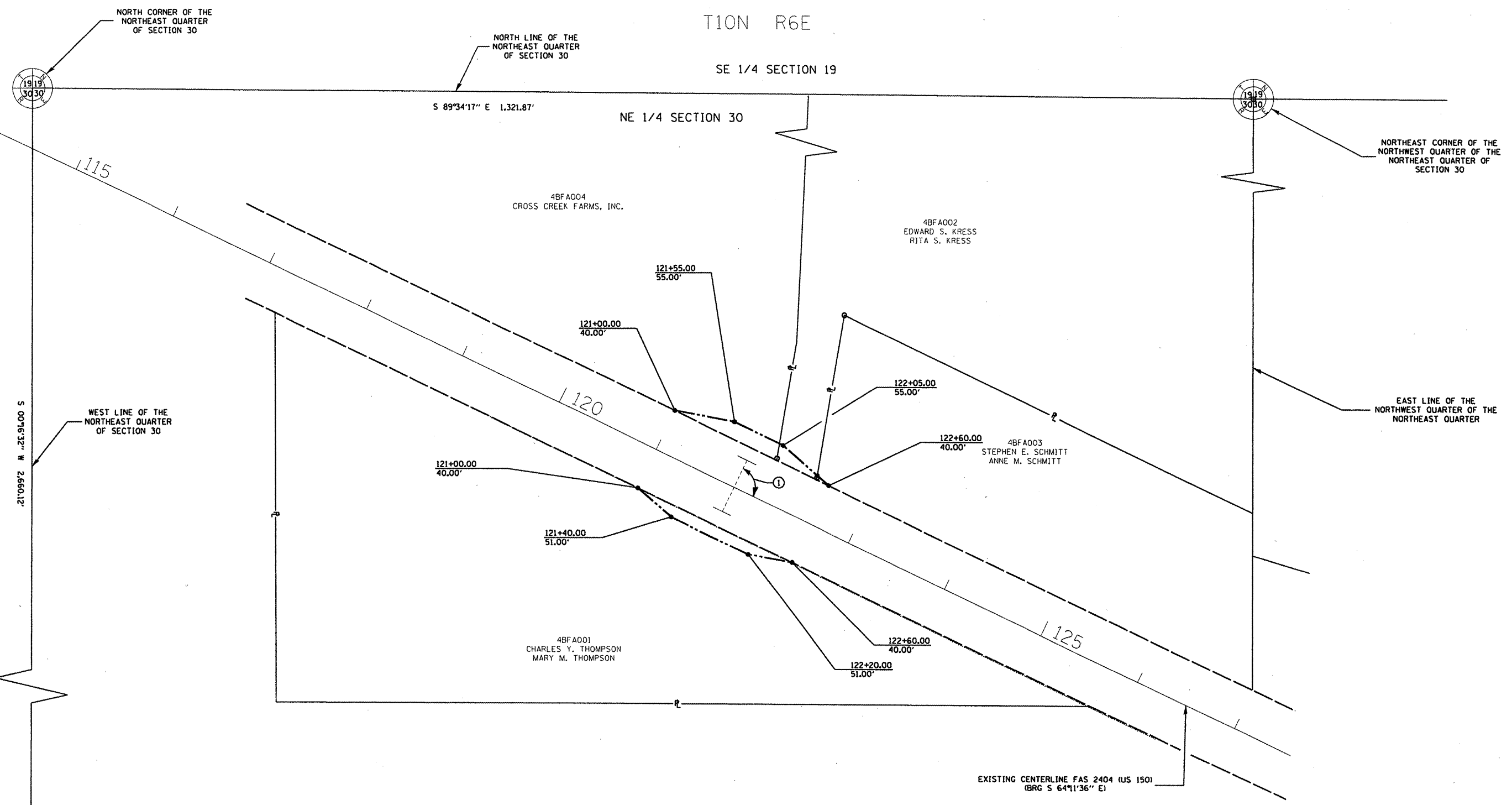
TRAFFIC CONTROL CLOSURE AT STRUCTURE.

FILE NAME = 68932 sheets.dgn	USER NAME = k1menkk	DESIGNED -	REVISED -	STATE OF ILLINOIS DEPARTMENT OF TRANSPORTATION	US 150 ROAD CLOSURE DETOUR DETAILS		F.A.S. RTE. 2402	SECTION 112C-3	COUNTY PEORIA	TOTAL SHEETS 18	SHEET NO. 11
		DRAWN -	REVISED -		NOT TO SCALE	SHEET NO. 2 OF 2 SHEETS	CONTRACT NO. 68932		ILLINOIS FED. AID PROJECT		
		CHECKED -	REVISED -								
		DATE -	REVISED -								

WGS 84
 1LSPC83W (97)
 NAVD 88
 GEOID03
 GRID FACTOR 0.9999235

T10N R6E

SE 1/4 SECTION 19



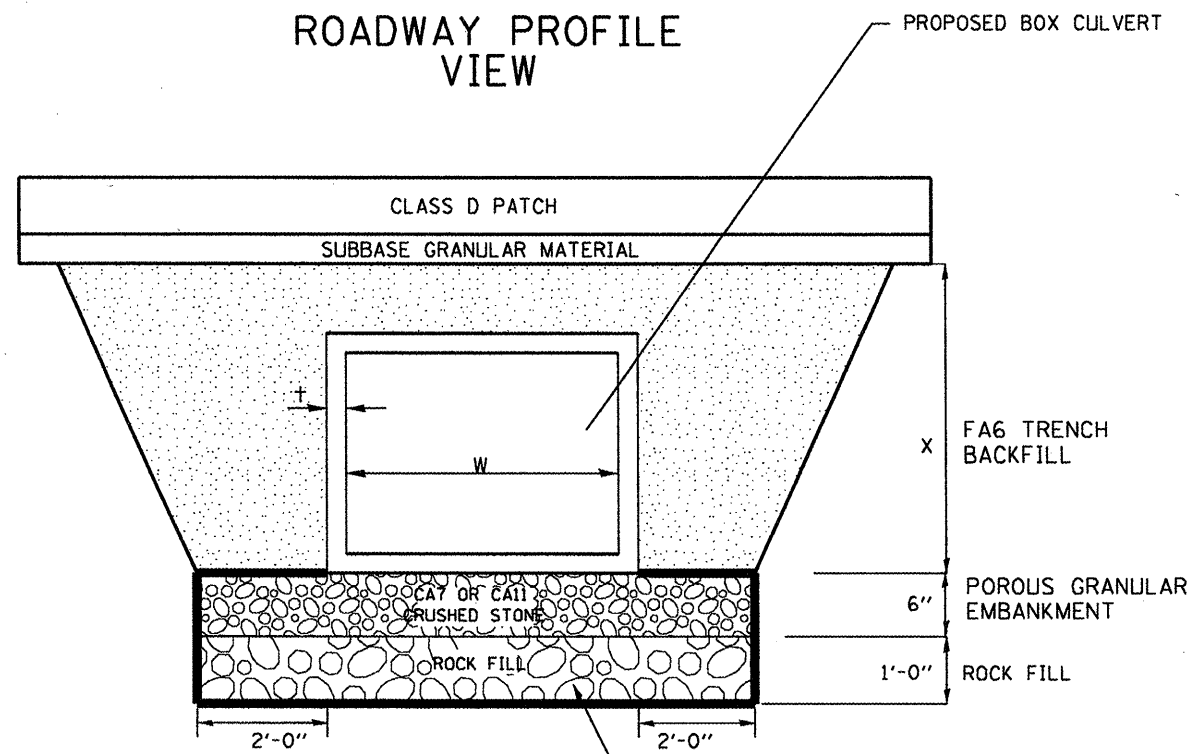
- LEGEND:**
- = EXISTING RIGHT OF WAY LINE
 - - - = PROPOSED RIGHT OF WAY LINE
 - = FOUND PIN/PIPE
 - = SET PIN w/CAP
 - ℙ = PROPERTY LINE

EXISTING CULVERT
 STA 121+81.00
 ① ANG 90°18'54"

N 1/4 CORNER SECTION 30 N: 1,516,012.1470 E: 2,381,315.7508
 SW CORNER NE 1/4 SECTION 30 N: 1,513,352.0549 E: 2,381,302.9625

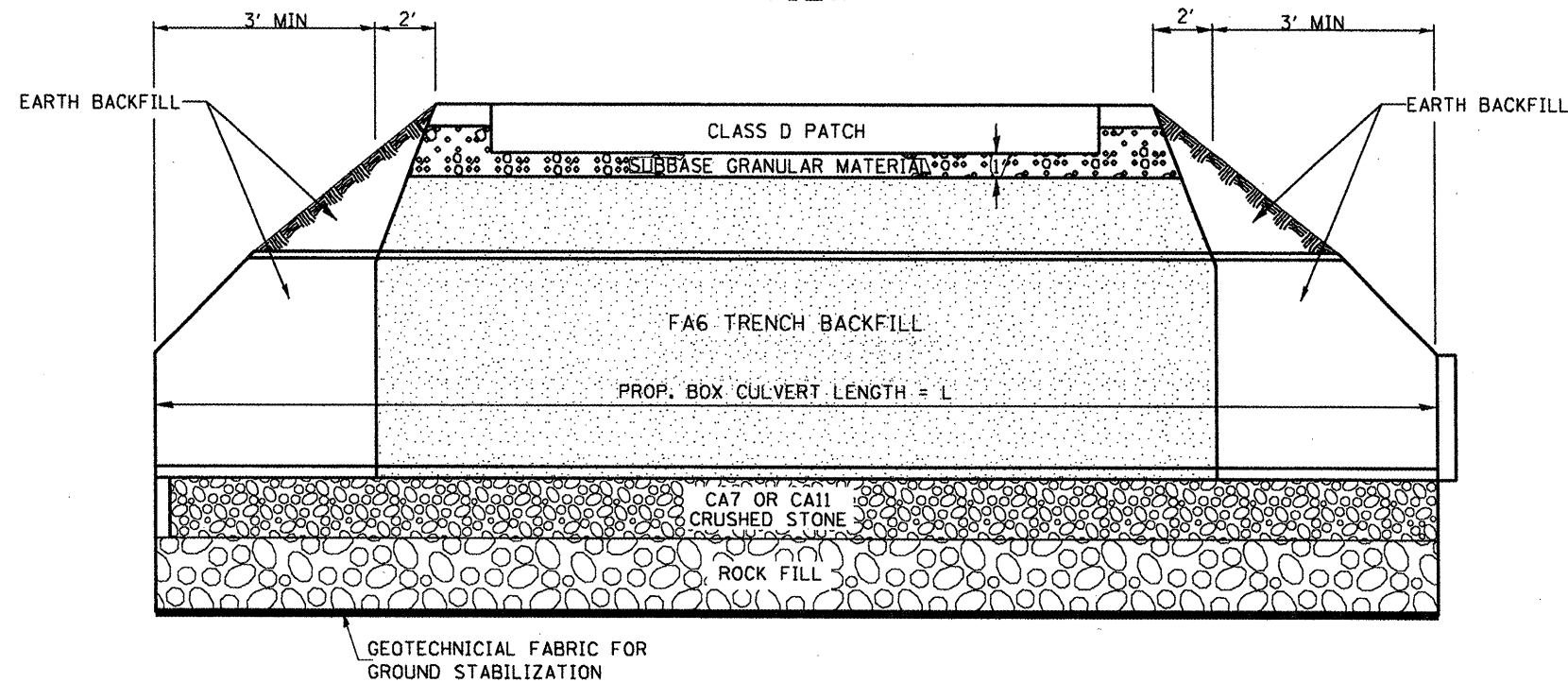
FILE NAME = US150_BRIMFIELD US150.m32	USER NAME = fieldspc	DESIGNED - ---	REVISED - ---	STATE OF ILLINOIS DEPARTMENT OF TRANSPORTATION	RIGHT OF WAY PLAN SHEET		F.A.S. RTE. 2402	SECTION 112C-3	COUNTY PEORIA	TOTAL SHEETS 18	SHEET NO. 12
	PLOT SCALE = 200.0000 / IN.	CHECKED - ---	REVISED - ---				SCALE: 1" = 50'		SHEET NO. ___ OF ___ SHEETS		STA. 121±00.00 TO STA. 122±60.00
US150.m32	PLOT DATE = 1/29/2010	DATE = 09-18-2009	REVISED - ---	ILLINOIS FED. AID PROJECT							

ROADWAY PROFILE VIEW



PROPOSED REMOVAL & DISPOSAL OF UNSUITABLE, AND REPLACE WITH ROCK FILL WITH GEOTECHNICAL FABRIC FOR GROUND STABILIZATION. PAID FOR BY RESPECTIVE PAY ITEMS

ROADWAY CROSS SECTION VIEW



NOTES:

1. STRUCTURE EXCAVATION AND BACKFILL SHALL BE IN ACCORDANCE WITH SECTION 502 AND PAYMENT FOR STRUCTURE EXCAVATION SHALL BE IN ACCORDANCE TO ARTICLE 502.13 OF THE STANDARD SPECIFICATIONS.
2. POROUS GRANULAR EMBANKMENT SHALL BE PLACED IN ACCORDANCE WITH ARTICLE 540.06 OF THE STANDARD SPECIFICATIONS AND SHALL BE INCLUDED IN THE COST OF THE PRECAST BOX CULVERT PAY ITEM.
3. WRAP POROUS GRANULAR MATERIAL AND ROCK FILL IN FABRIC. THE FABRIC SHALL BE ACCORDING TO THE REQUIREMENTS OF THE APPLICABLE PORTIONS OF SECTION 1080 AND SECTION 282 WITH 6 OR 8 OZ/SQ YD MATERIAL ALLOWED.
4. THE COST OF THE TRENCH BACKFILL SHALL BE INCLUDED IN THE COST OF THE PRECAST BOX CULVERT PAY ITEM.
5. UNDERCUT IF THE DYNAMIC CONE PENETROMETER TESTS INDICATE SOIL STRENGTH IS LESS THAN 1 TON/SQ. FT.

AT THE OPTION OF THE ENGINEER AN UNDERCUT FOR WORKING PLATFORM MAY BE USED IF NEEDED BASED ON SITE CONDITIONS AT THE TIME OF CONSTRUCTION.

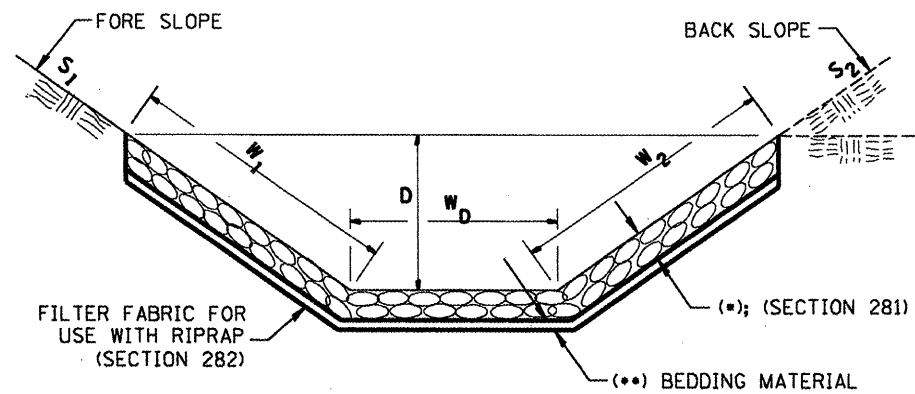
LOCATION	W	t	L	ROCK FILL	GEOTECH. FABRIC	REMOVAL OF UNSUITABLE MATERIAL
	FEET	INCHES	FEET	TON	SQ YD	CU YD
STA. 121+81	7'-8"	1'	94	55	153	27

ROCK FILL CONVERSION FACTOR - 2.05 TON/CU YD

LOCATION	W	t	L	POROUS GRANULAR EMBANKMENT
	FEET	INCHES	FEET	CU YD
STA. 121+81	7'-8"	0.5'	94	13

POROUS GRANULAR EMBANKMENT CONVERSION FACTOR - 2.05 TON/CU YD

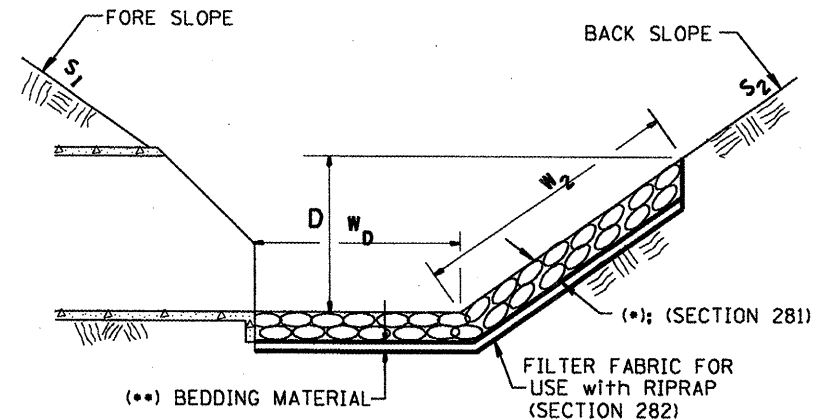
**CASE 1
(DITCH)**



CASE 1				
LOCATION	WIDTH (1)	LENGTH	RIPRAP	FABRIC
STA TO STA	lin ft (m)	lin ft (m)	tons (m tons)	sq yds (m ²)
LT STA 121+31 TO STA 121+77.5	16	47	55.7	83.6
LT STA 121+84.5 TO STA 122+31	16	47	55.7	83.6
TOTAL			111	167

(1) WIDTH = $W_1 + W_2 + W_D$

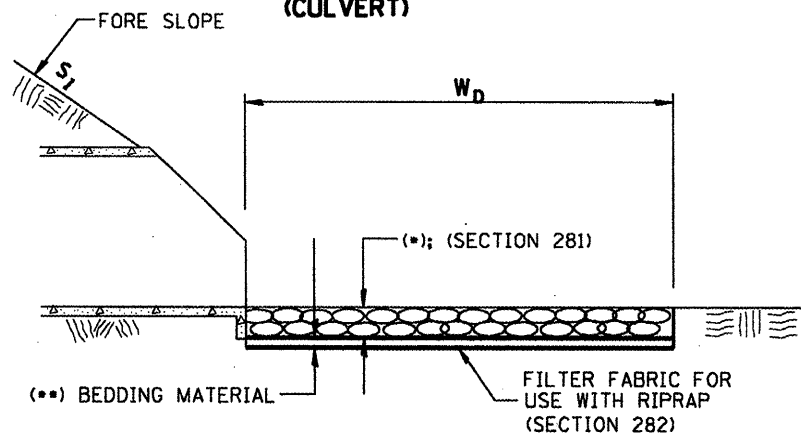
**CASE 2
(CULVERT & SLOPE)**



CASE 2				
LOCATION	WIDTH (1)	LENGTH	RIPRAP	FABRIC
STA TO STA	lin ft (m)	lin ft (m)	tons (m tons)	sq yds (m ²)
RT STA 121+77.5 TO STA 121+84.5	11.5	7	6	9
TOTAL			6	9

(1) WIDTH = $W_2 + W_D$

**CASE 3
(CULVERT)**



CASE 3				
LOCATION	WIDTH (1)	LENGTH	RIPRAP	FABRIC
STA TO STA	lin ft (m)	lin ft (m)	tons (m tons)	sq yds (m ²)
LT STA 121+77.5 TO STA 121+84.5	8.6	7	5	7
TOTAL			5	7

(1) WIDTH = W_D

NOTES

STONE DUMPED RIPRAP SHALL BE CLASS A4, AND SHALL BE PLACED AT A MINIMUM OF 16 INCHES.

BEDDING MATERIAL SHALL BE CLASS A1, AND SHALL BE PLACED AT A THICKNESS OF 6 INCHES.

FILTER FABRIC SHALL BE REQUIRED AND SHALL CONFORM TO SECTION 282 OF THE STANDARD SPECIFICATIONS.

JOBSITE TOTALS

LOCATION	STONE DUMPED RIPRAP, CLASS A4	FILTER FABRIC
STA TO STA	tons (m tons)	sq yds (m ²)
LT STA 121+31 TO STA 121+77.5	55.7	83.6
LT STA 121+77.5 TO STA 121+84.5	5	7
LT STA 121+84.5 TO STA 122+31	55.7	83.6
RT STA 121+77.5 TO STA 121+84.5	6	9
GRAND TOTAL	122	183

All slope ratios are expressed as units of vertical displacement to units of horizontal displacement (V:H).

All dimensions are in inches (millimeters) unless otherwise noted.

RIPRAP CONVERSION FACTOR - 1.5 TON/CU YD

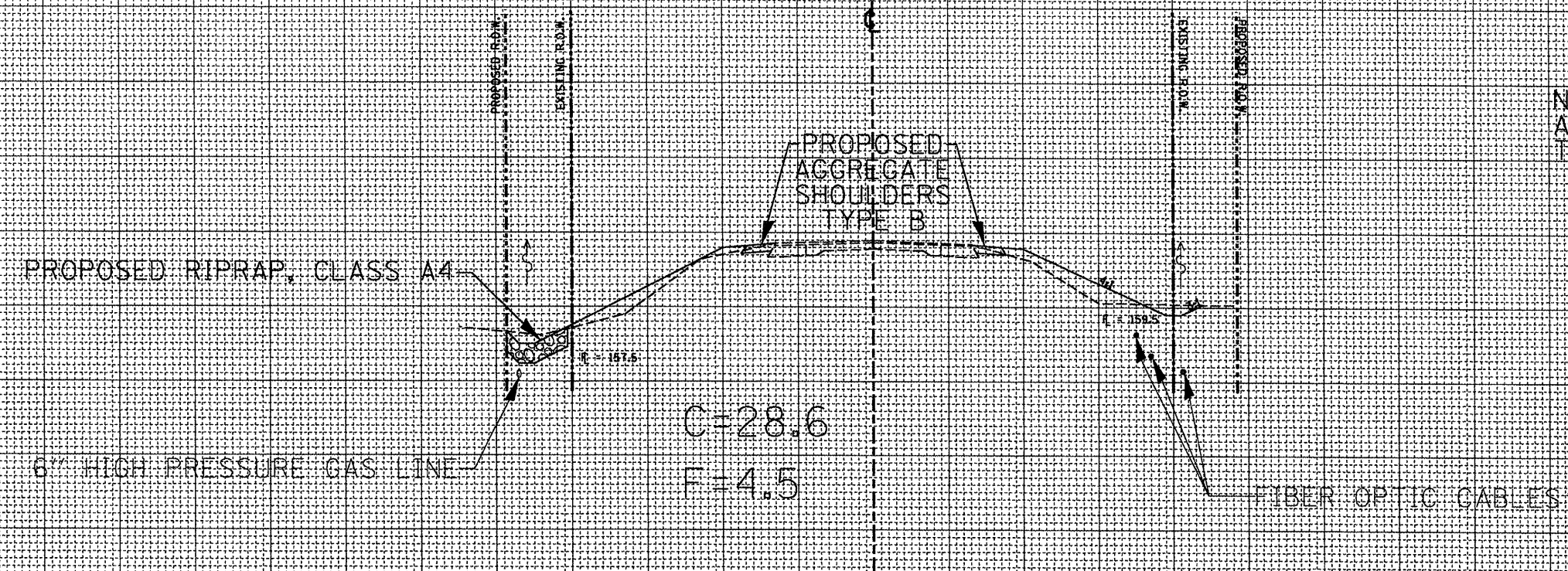
1-1-97	RENLM, A-12.02, NEW REVISION BOX	T.P.	07-20-09	CALC. BY	K.K.
12-1-97	CORRECT FILTER FABRIC LEADER ARROW	J.A.			
10-16-06	REVISED TO 2007 SPEC.	M.A.			

STATE OF ILLINOIS
DEPARTMENT OF TRANSPORTATION

RIPRAP DITCH FOR EROSION PROTECTION
DETAIL

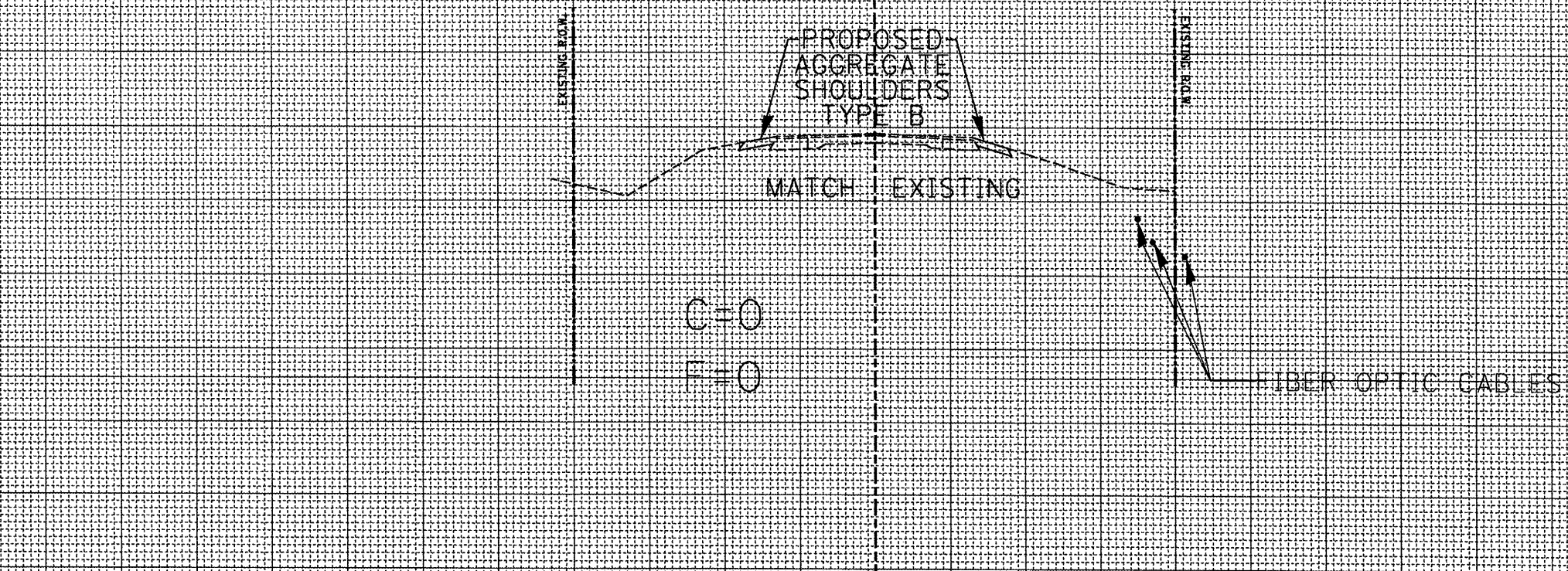
F.A.P. RTE.	SECTION	COUNTY	TOTAL SHEETS	SHEET NO.
2402	112C-3	PEORIA	18	14
CONTRACT NO. 68932				
FED. ROAD DIST. NO.		ILLINOIS FED. AID PROJECT		

NOTE: LOCATION OF UTILITIES IS APPROXIMATE, DEPTH AND OFFSET TO BE VERIFIED IN THE FIELD.



165
160
155

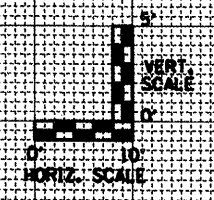
STA. 121+31



165
160
155

STA. 120+81

60 50 40 30 20 10 10 20 30 40 50 60



DATE	
BY	
SURVEYED	
DESIGNED	
TEMP. DATE	
AREAS	
AREAS CHECKED	
NO.	

DATE	
BY	
SURVEYED	
DESIGNED	
TEMP. DATE	
AREAS	
AREAS CHECKED	
NO.	

FILE NAME = 68932 sheets.dgn

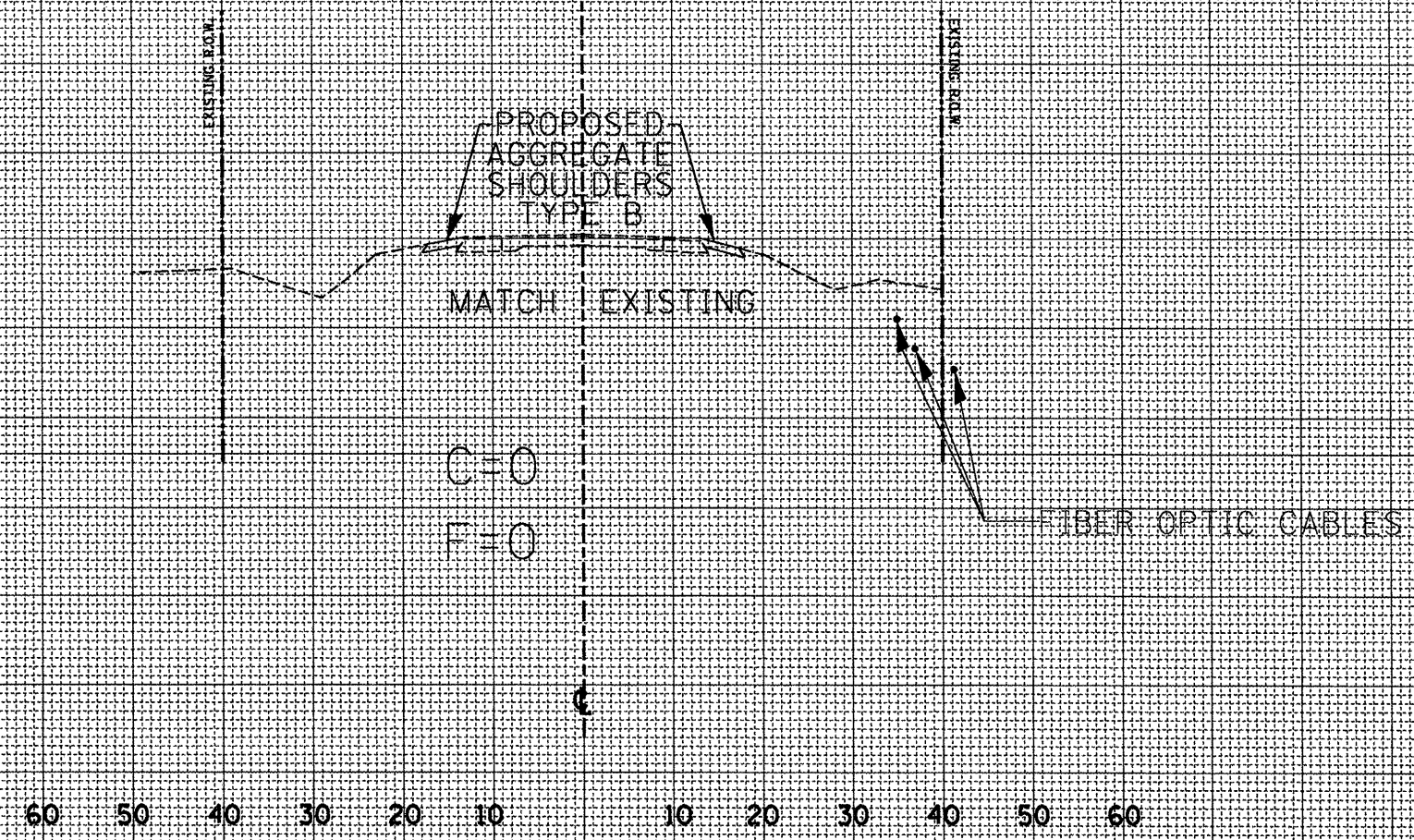
USER NAME = K. KILMAN	DESIGNED -	REVISED -
	DRAWN - KKK	REVISED -
PLOT SCALE = 20.0000' / IN.	CHECKED -	REVISED -
PLOT DATE = 2/26/2010	DATE -	REVISED -

STATE OF ILLINOIS
DEPARTMENT OF TRANSPORTATION

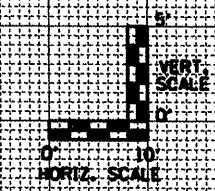
CROSS SECTIONS
US 150
SCALE: 1"=10'H/5'V SHEET NO. 1 OF 3 SHEETS STA. 120+81 TO STA. 121+31

F.A.S. RTE. 2402	SECTION 112C-3	COUNTY PEORIA	TOTAL SHEETS 18	SHEET NO. 16
FED. ROAD DIST. NO. ILLINOIS FED. AID PROJECT			CONTRACT NO. 68932	

NOTE: LOCATION OF UTILITIES IS APPROXIMATE, DEPTH AND OFFSET TO BE VERIFIED IN THE FIELD.



STA. 122+81



FINAL SURVEY	BY	DATE
REVIEWED		
PLOTTED		
NOTE BOOK		
TEMPLATE		
AREAS		
CHECKED		

ORIGINAL SURVEY	BY	DATE
REVIEWED		
PLOTTED		
NOTE BOOK		
TEMPLATE		
AREAS		
CHECKED		

FILE NAME = 68932 sheets.dgn

USER NAME = K. KILMAN
 PLOT SCALE = 20.0000' / IN.
 PLOT DATE = 2/10/2010

DESIGNED -	REVISED -
DRAWN - KKK	REVISED -
CHECKED -	REVISED -
DATE -	REVISED -

STATE OF ILLINOIS
 DEPARTMENT OF TRANSPORTATION

CROSS SECTIONS
 US 150
 SCALE: 1"=10'H/5'V SHEET NO. 3 OF 3 SHEETS STA. 122+81

F.A.S. RTE. 2402	SECTION 112C-3	COUNTY PEORIA	TOTAL SHEETS 18	SHEET NO. 18
FED. ROAD DIST. NO. ILLINOIS FED. AID PROJECT			CONTRACT NO. 68932	