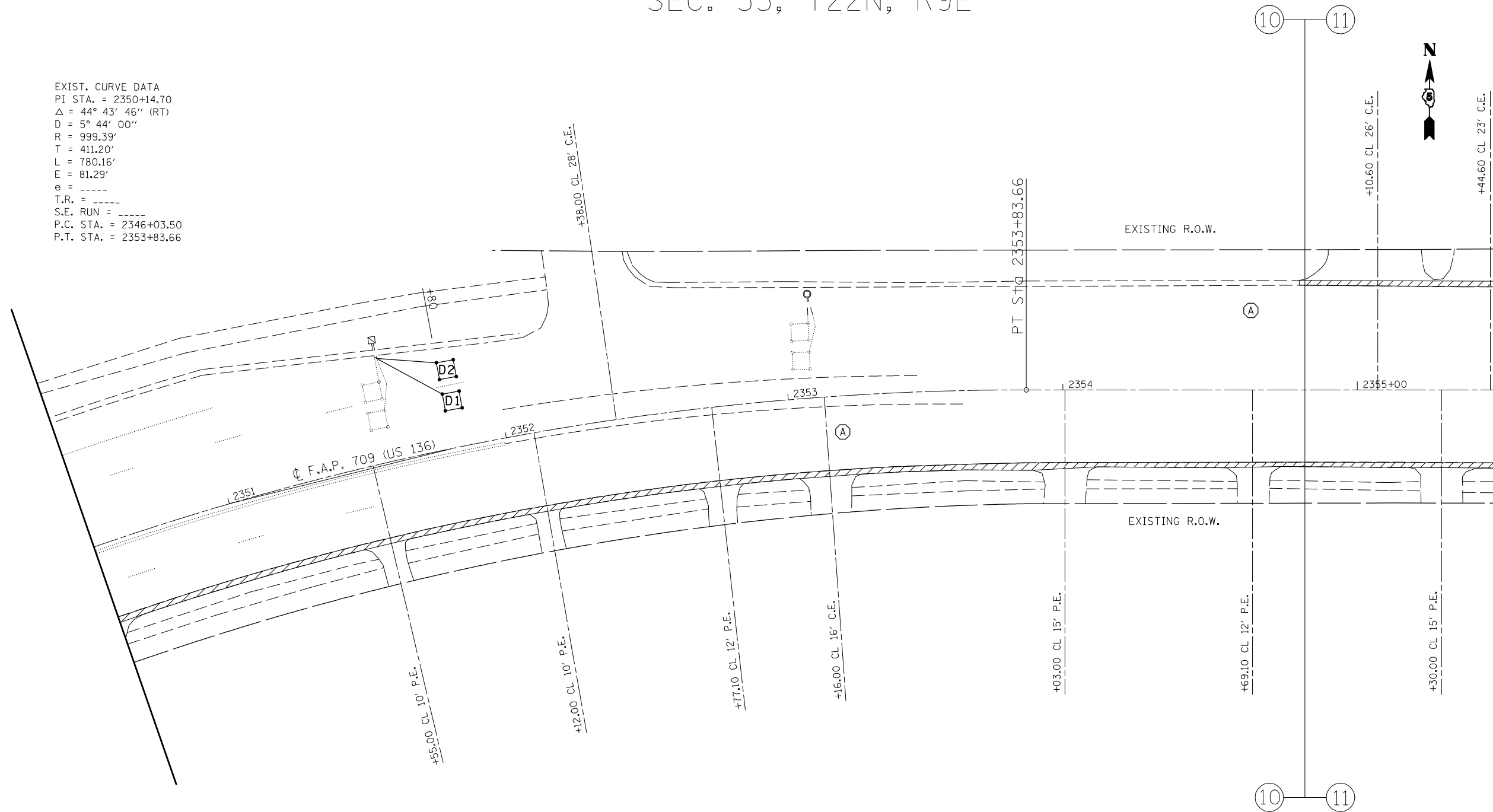


SEC. 35, T22N, R9E

EXIST. CURVE DATA
 PI STA. = 2350+14.70
 $\Delta = 44^\circ 43' 46''$ (RT)
 D = $5^\circ 44' 00''$
 R = 999.39'
 T = 411.20'
 L = 780.16'
 E = 81.29'
 e = -----
 T.R. = -----
 S.E. RUN = -----
 P.C. STA. = 2346+03.50
 P.T. STA. = 2353+83.66



NOTES:

1. PLAN SHEET TOPO DRAWN FROM AS-BUILT PLANS. DRAWING NOT TO SCALE.
2. DRAINAGE SHALL BE MAINTAINED THROUGH ALL ENTRANCES.
3. SEE SPECIAL PROVISIONS FOR REQUIREMENTS OF OPENING MANHOLES AND WATER VALVE BOXES AFTER RESURFACING IS COMPLETE.

COLD MILLING (SPECIAL)

MANHOLES TO BE ADJUSTED

SEC. 2, T21N, R9E

FILE NAME =	USER NAME = hoganbj	DESIGNED - BJM	REVISED -
ct:\pw\work\PWIDOT\HOGANBJ\d0104446\7017\sheets.dgn		DRAWN - BJH	REVISED -
	PLOT SCALE = 40.0000' / IN.	CHECKED -	REVISED -
	PLOT DATE = 1/29/2010	DATE - 1/21/2010	REVISED -

STATE OF ILLINOIS
 DEPARTMENT OF TRANSPORTATION

PLAN SHEETS

SCALE: 1" = 20' SHEET NO. 17 OF 20 SHEETS STA. 2350+50 TO STA. 2355+50

F.A.P. RTE.	SECTION	COUNTY	TOTAL SHEETS	SHEET NO.
709	(113)RS-1	CHAMPAIGN	65	52
FED. ROAD DIST. NO. ILLINOIS FED. AID PROJECT			CONTRACT NO. 70117	