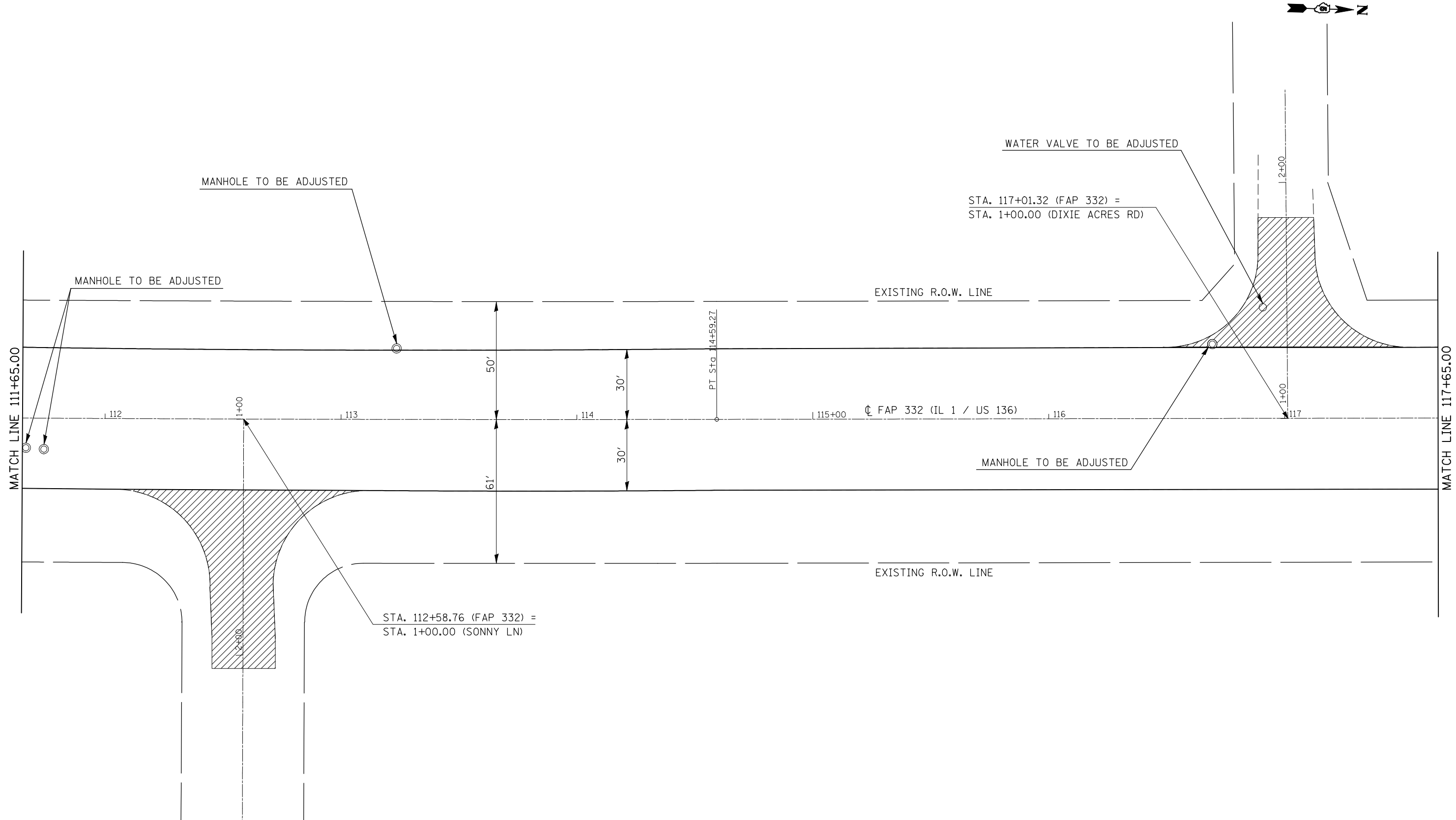
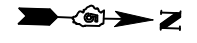


 INCIDENTAL HMA SURFACING



WATER VALVE TO BE ADJUSTED

STA. 117+01.32 (FAP 332) =
STA. 1+00.00 (DIXIE ACRES RD)

MANHOLE TO BE ADJUSTED

MANHOLE TO BE ADJUSTED

EXISTING R.O.W. LINE

FAP 332 (IL 1 / US 136)

MANHOLE TO BE ADJUSTED

EXISTING R.O.W. LINE

STA. 112+58.76 (FAP 332) =
STA. 1+00.00 (SONNY LN)

MATCH LINE 111+65.00

MATCH LINE 117+65.00

• (48-X1)RS&(48-X2,RX,RX-1)RS-1

FILE NAME = c:\pw\work\p\dot\bowerm\145216\570124-shr-20p1en.dgn	USER NAME = bowerm1	DESIGNED -	REVISED -
		DRAWN -	REVISED -
	PLOT SCALE = 40.0000' / IN.	CHECKED -	REVISED -
	PLOT DATE = 1/27/2010	DATE -	REVISED -

**STATE OF ILLINOIS
DEPARTMENT OF TRANSPORTATION**

IL ROUTE 1 / US 136

SCALE: SHEET NO. OF SHEETS STA. TO STA.

F.A.P. RTE.	SECTION	COUNTY	TOTAL SHEETS	SHEET NO.
332	•	VERMILION	86	52
CONTRACT NO. 70124			ILLINOIS FED. AID PROJECT	