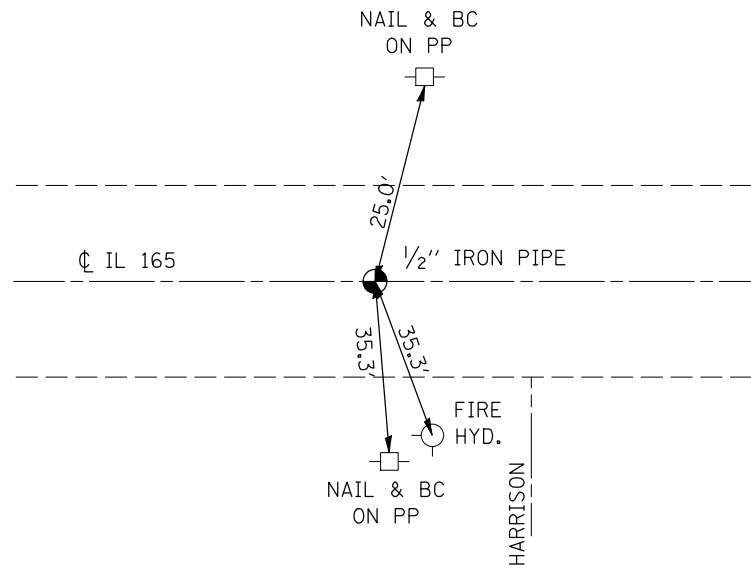
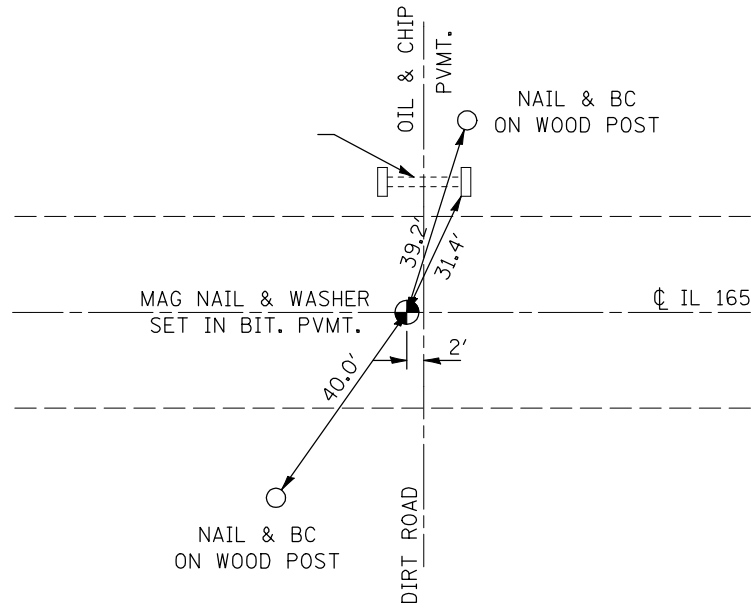


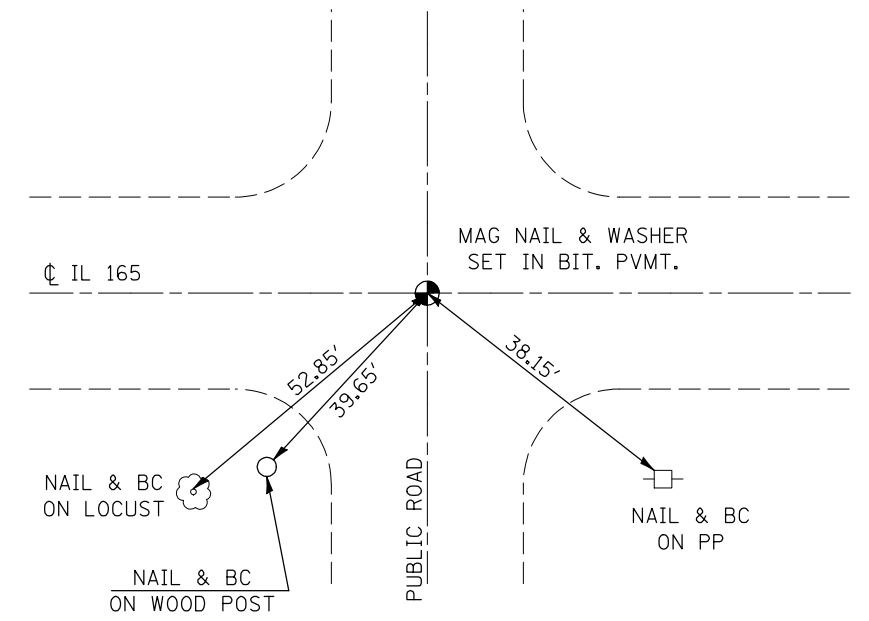
**1/2" IRON PIPE**  
**NE COR. SEC. 3**  
**STA. 886 + 87.70**



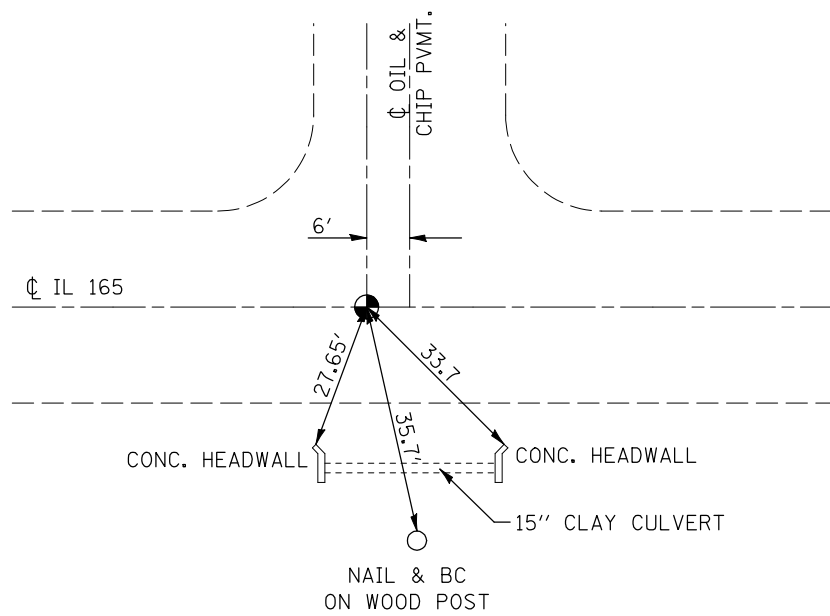
**MAG NAIL & WASHER**  
**S 1/4 COR. SEC. 5**  
**STA. 726 + 36**



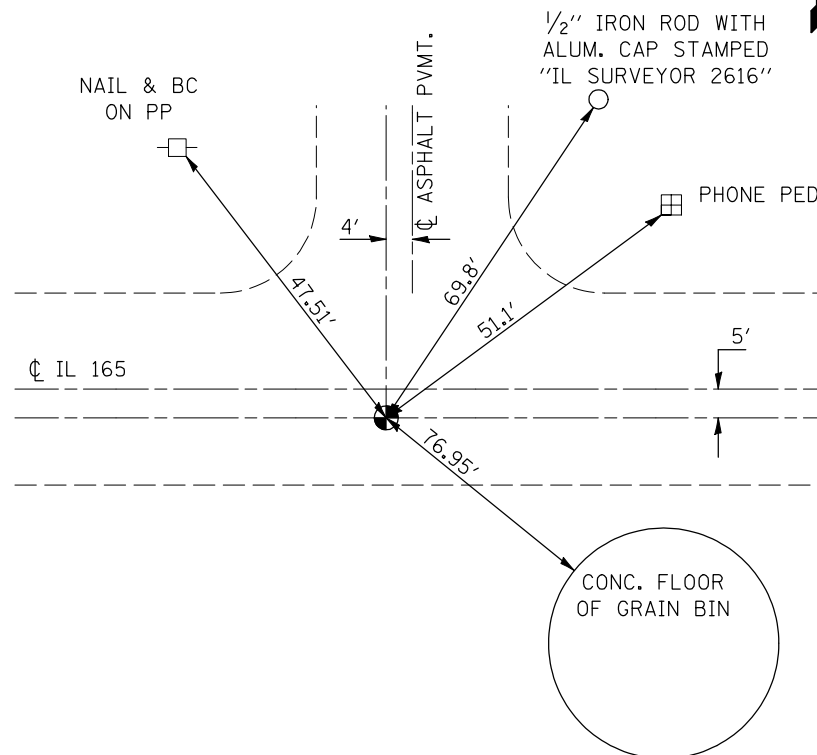
**MAG NAIL & WASHER**  
**S 1/4 COR. SEC. 6**  
**STA. 673 + 23**



**MAG NAIL & WASHER**  
**SE COR. SEC. 6**



**FOUND BRASS DISK**  
**NE COR. SEC. 11**



FILE NAME =	USER NAME = coombessf	DESIGNED -	REVISED -
ct:\pw\work\PWIDOT\COOMBESSF\dms87296\d70510-sht-ATB.dgn		DRAWN -	REVISED -
	PLOT SCALE = 40.0000' / IN.	CHECKED -	REVISED -
	PLOT DATE = 1/13/2010	DATE -	REVISED -

**STATE OF ILLINOIS**  
**DEPARTMENT OF TRANSPORTATION**

**SURVEY MONUMENT TIE POINTS**

SCALE: SHEET NO. OF SHEETS STA. TO STA.

F.A.S. RTE.	SECTION	COUNTY	TOTAL SHEETS	SHEET NO.
2484	(125,126,127)RS-2	MCLEAN	122	23
CONTRACT NO. 70510				
ILLINOIS FED. AID PROJECT				