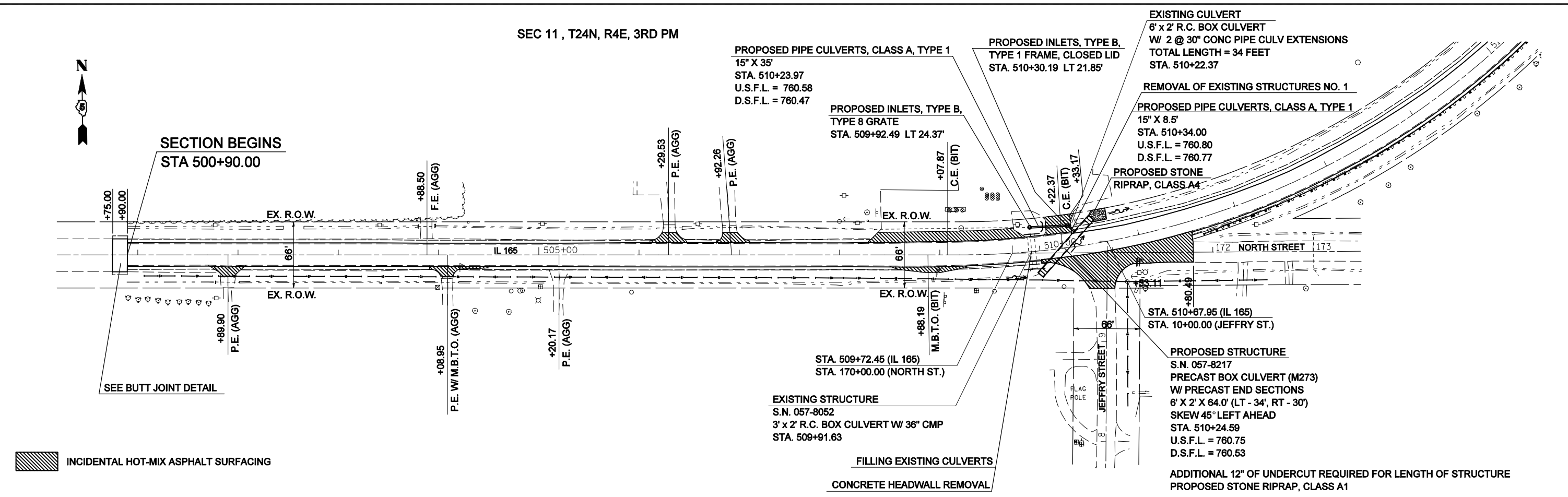
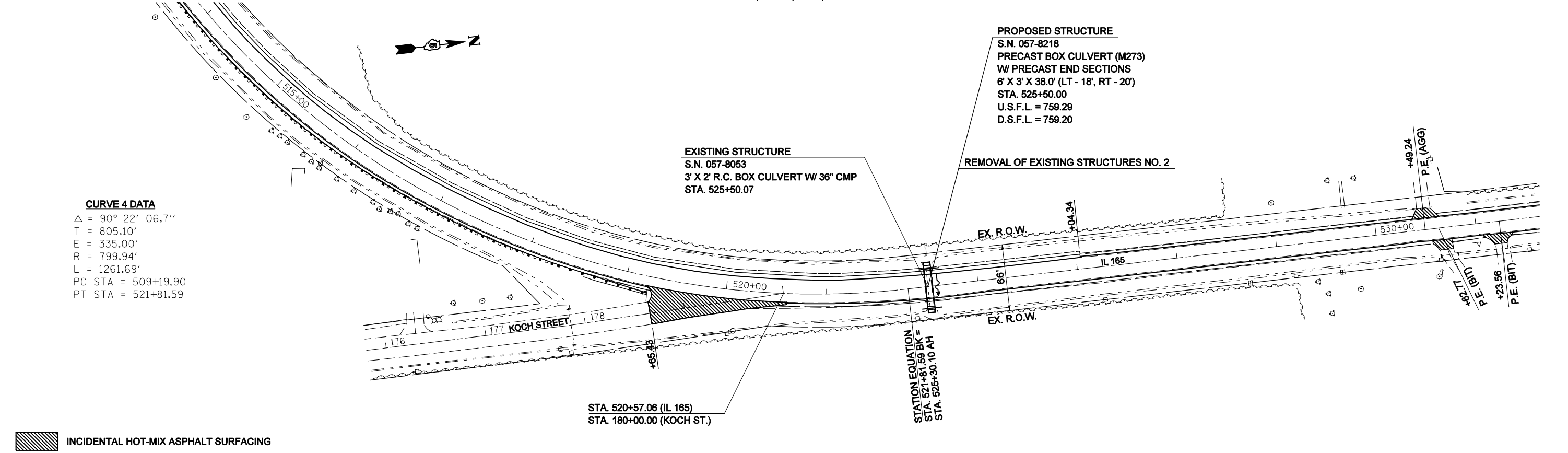


SEC 11, T24N, R4E, 3RD PM



INCIDENTAL HOT-MIX ASPHALT SURFACING

SEC 11, T24N, R4E, 3RD PM



INCIDENTAL HOT-MIX ASPHALT SURFACING

CURVE 4 DATA
 $\Delta = 90^\circ 22' 06.7''$
 $T = 805.10'$
 $E = 335.00'$
 $R = 799.94'$
 $L = 1261.69'$
 $PC STA = 509+19.90$
 $PT STA = 521+81.59$

FILE NAME =	USER NAME = coombessf	DESIGNED -	REVISED -
ct:\pw\work\PWIDOT\COOMBESSF\dms87296\070510-sht-plan.dgn		DRAWN -	REVISED -
PLOT SCALE = 1/8" = 100.0000' / IN.		CHECKED -	REVISED -
PLOT DATE = 1/13/2010		DATE -	REVISED -

STATE OF ILLINOIS
DEPARTMENT OF TRANSPORTATION

PLAN SHEETS			
SCALE:	SHEET NO.	OF SHEETS	STA. 500+90.00 TO STA. 530+00.00

F.A.S. RTE.	SECTION	COUNTY	TOTAL SHEETS	SHEET NO.
2484	(125,126,127)RS-2	MCLEAN	122	24
CONTRACT NO. 70510				
FED. ROAD DIST. NO. ILLINOIS FED. AID PROJECT				