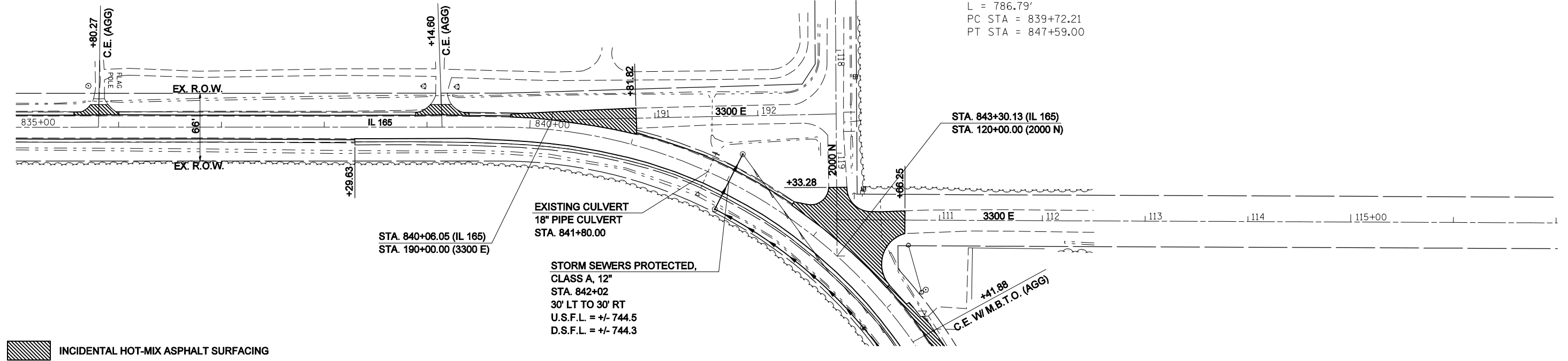
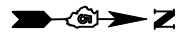


SEC 4 , T24N, R5E, 3RD PM

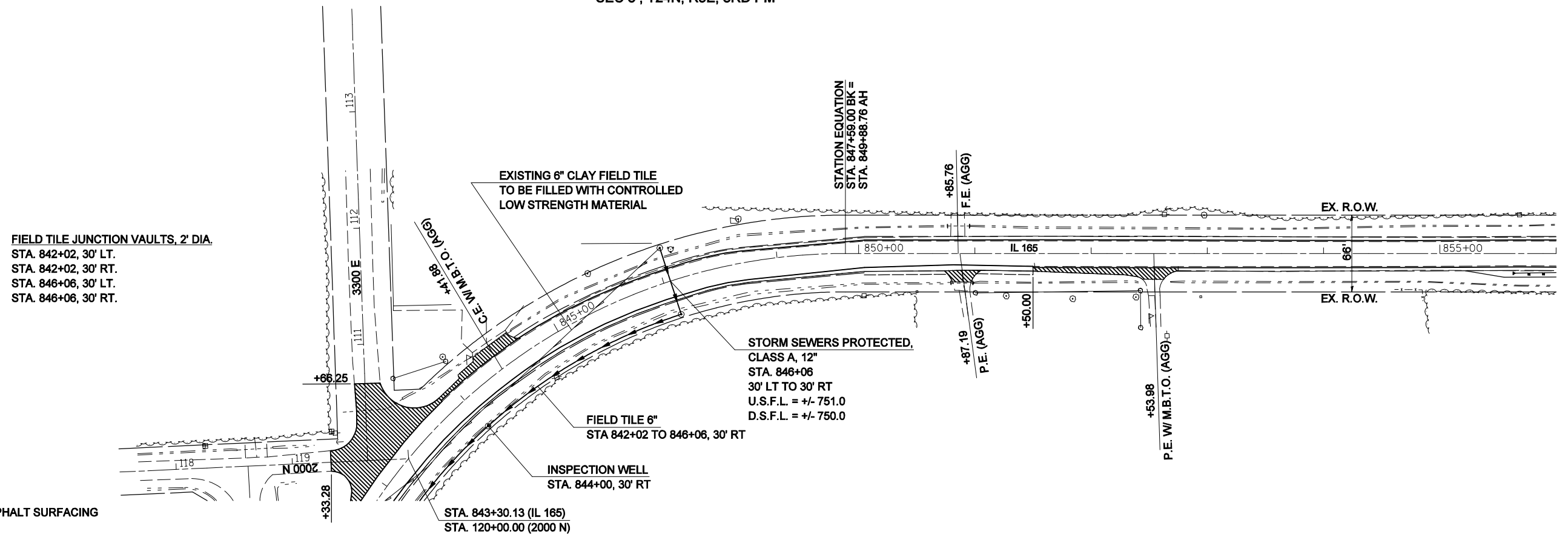
CURVE 88 DATA

Δ = 92° 15' 33"
 T = 508.28'
 E = 216.43'
 R = 488.62'
 L = 786.79'
 PC STA = 839+72.21
 PT STA = 847+59.00



INCIDENTAL HOT-MIX ASPHALT SURFACING

SEC 3 , T24N, R5E, 3RD PM



INCIDENTAL HOT-MIX ASPHALT SURFACING

FILE NAME =	USER NAME = coombessf	DESIGNED -	REVISED -
ct:\pw\work\PWIDOT\COOMBESSF\dms87296\0770510-sht-plan.dgn		DRAWN -	REVISED -
PLOT SCALE = 100.0000' / IN.		CHECKED -	REVISED -
PLOT DATE = 1/13/2010		DATE -	REVISED -

STATE OF ILLINOIS
 DEPARTMENT OF TRANSPORTATION

PLAN SHEETS

SCALE: SHEET NO. OF SHEETS STA. 835+00.00 TO STA. 856+00.00

F.A.S. RTE.	SECTION	COUNTY	TOTAL SHEETS	SHEET NO.
2484	(125,126,127)RS-2	MCLEAN	122	36
CONTRACT NO. 70510				
FED. ROAD DIST. NO. ILLINOIS FED. AID PROJECT				