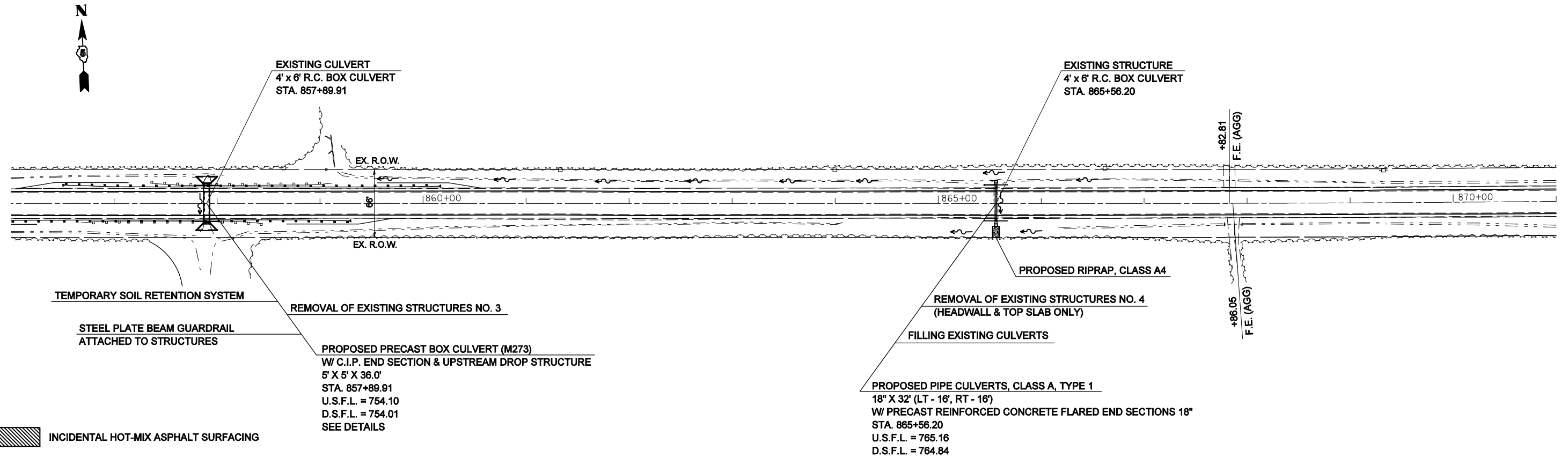
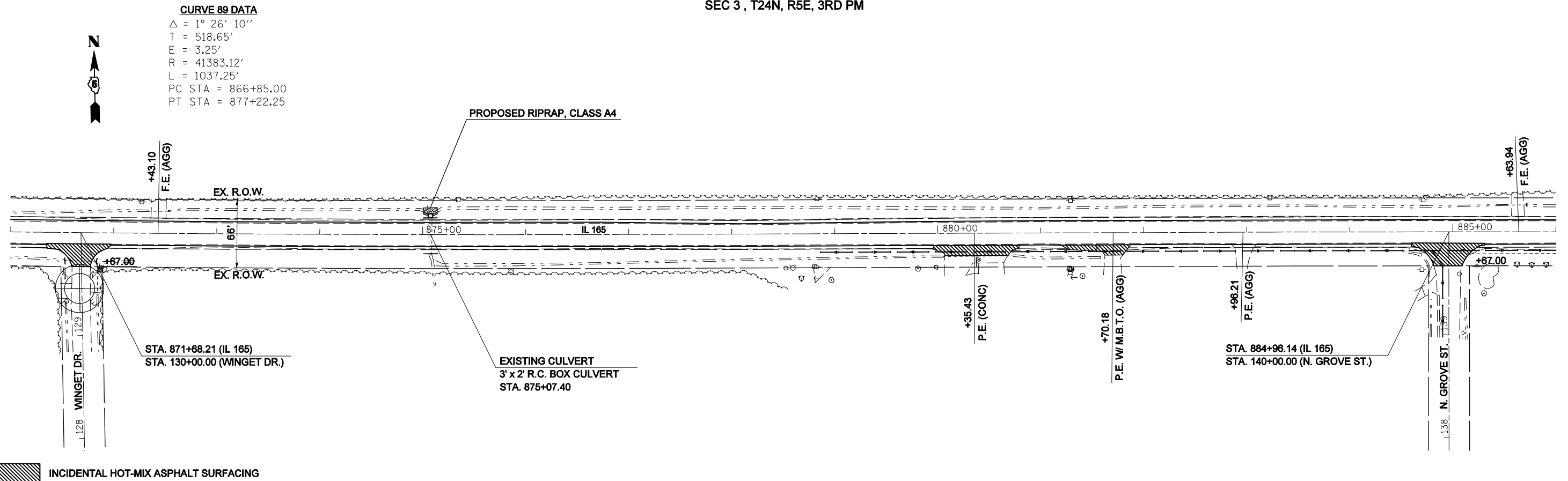


SEC 3 , T24N, R5E, 3RD PM



SEC 3 , T24N, R5E, 3RD PM



CURVE 89 DATA
 $\Delta = 1^\circ 26' 10''$
 T = 518.65'
 E = 3.25'
 R = 41383.12'
 L = 1037.25'
 PC STA = 866+85.00
 PT STA = 877+22.25

FILE NAME =	USER NAME = coombessf	DESIGNED -	REVISED -
ct:\pw\work\PWIDOT\COOMBESSF\dms87296\8770510-sht-plan.dgn		DRAWN -	REVISED -
	PLOT SCALE = 100.0000' / IN.	CHECKED -	REVISED -
	PLOT DATE = 1/13/2010	DATE -	REVISED -

**STATE OF ILLINOIS
 DEPARTMENT OF TRANSPORTATION**

PLAN SHEETS			
SCALE:	SHEET NO.	OF SHEETS	STA. 856+00.00 TO STA. 886+00.00

F.A.S. RTE.	SECTION	COUNTY	TOTAL SHEETS	SHEET NO.
2484	(125,126,127)RS-2	MCLEAN	122	37
CONTRACT NO. 70510				
FED. ROAD DIST. NO. ILLINOIS FED. AID PROJECT				