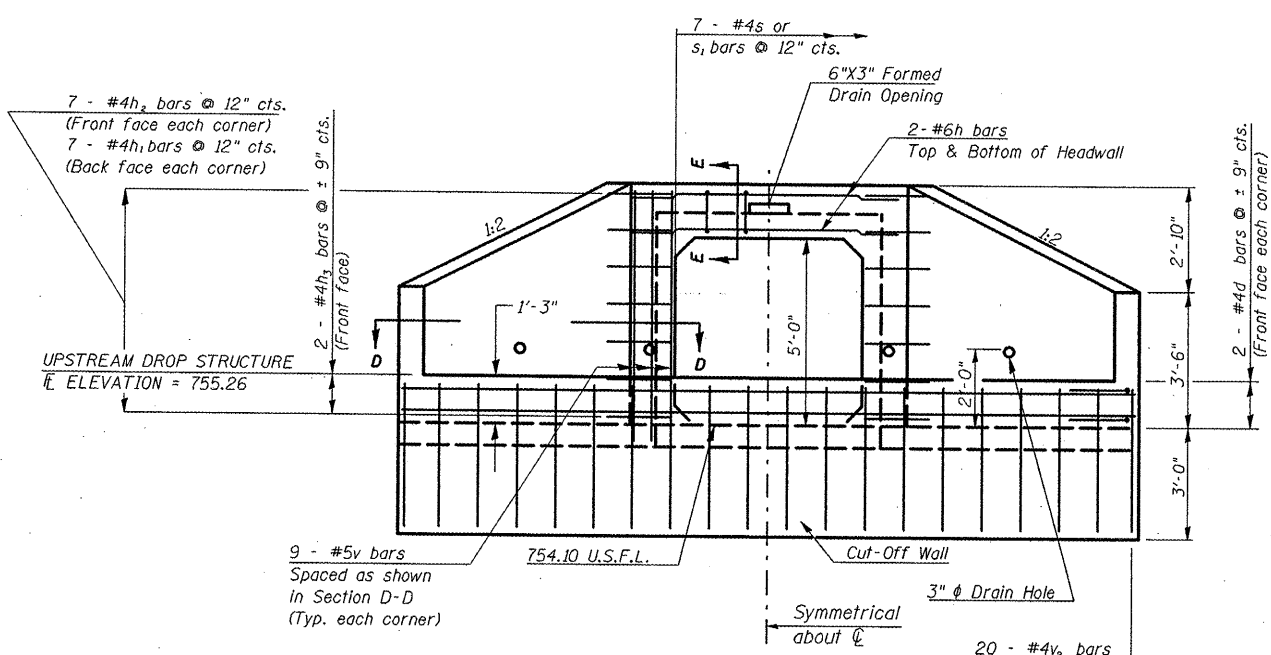
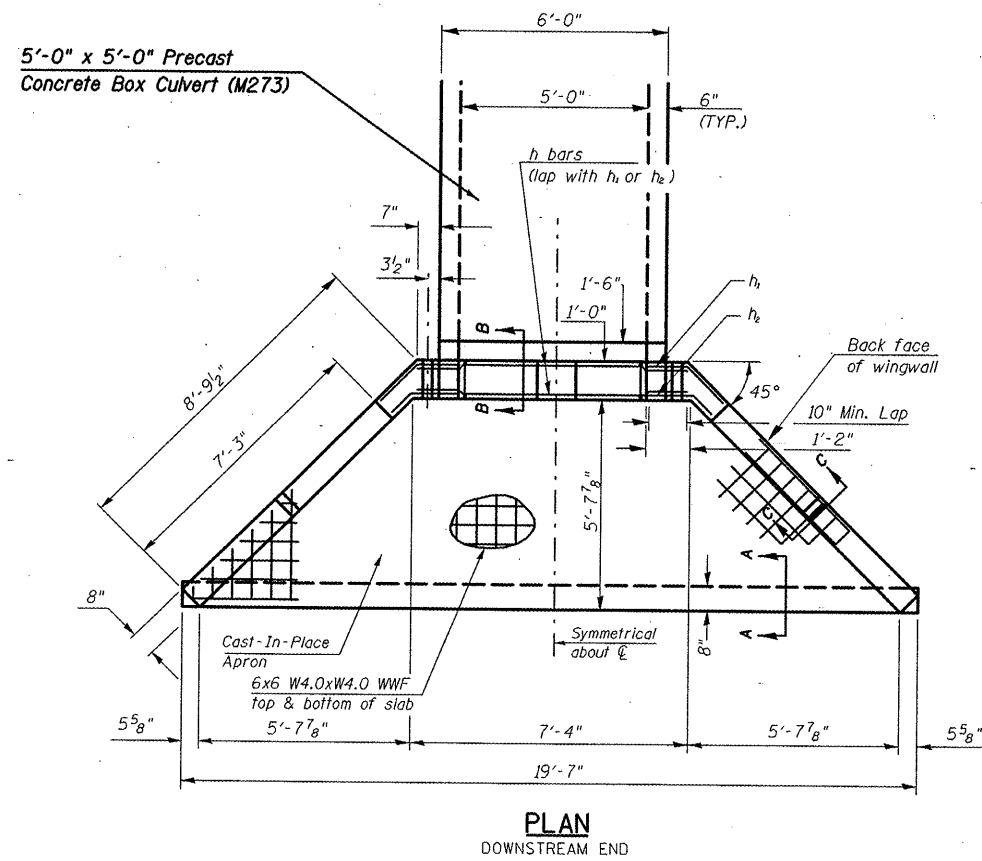


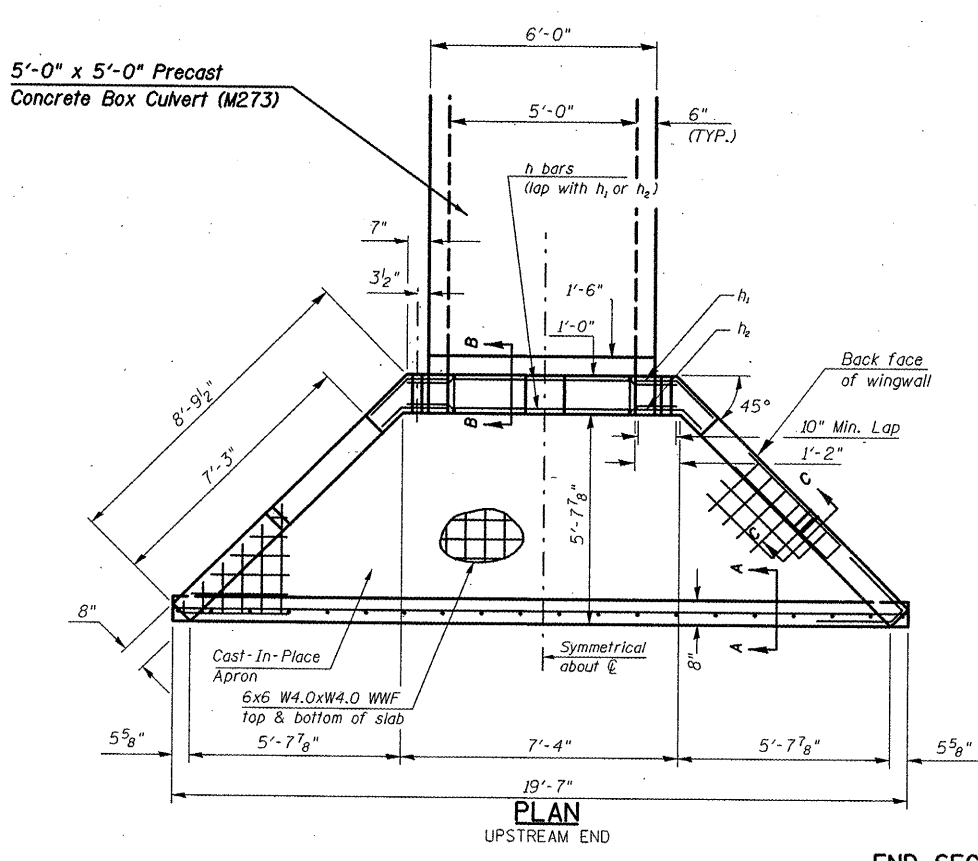
END ELEVATION
DOWNSTREAM END



END ELEVATION
UPSTREAM END



PLAN
DOWNSTREAM END



PLAN
UPSTREAM END

END SECTION DETAILS
SINGLE 5'x5' PRECAST BOX CULVERT
F.A.S. ROUTE 2484 - SECTION (125,126,127)RS-2
MCLEAN CO.
STATION 857+89.91
CULVERT NO. 3

Sheet 2 of 3

FILE NAME =	USER NAME = corral1t	DESIGNED <i>RTC</i>	REVISED -
c:\pwwork\pmsdot\corral1t\dms87296\7010-sh-culvert-details.dgn		DRAWN <i>RTC</i>	REVISED -
PLOT SCALE = 44.0000' / IN.		CHECKED -	REVISED -
PLOT DATE = 3/3/2010		DATE -	REVISED -

STATE OF ILLINOIS
DEPARTMENT OF TRANSPORTATION

END SECTION DETAILS
BOX CULVERT REPLACEMENT AT STA. 857+89.91

F.A.S. RTE.	SECTION	COUNTY	TOTAL SHEETS	SHEET NO.
2484	(125,126,127)RS-2	MCLEAN	122	48
CONTRACT NO. 70510				

SCALE: SHEET NO. OF SHEETS STA. TO STA.

ILLINOIS FED. AID PROJECT