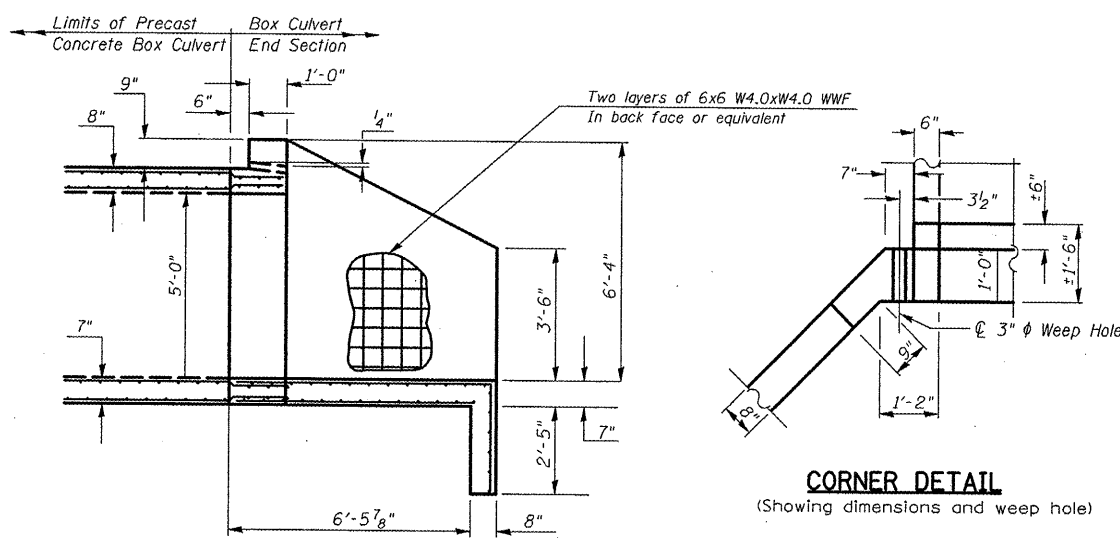
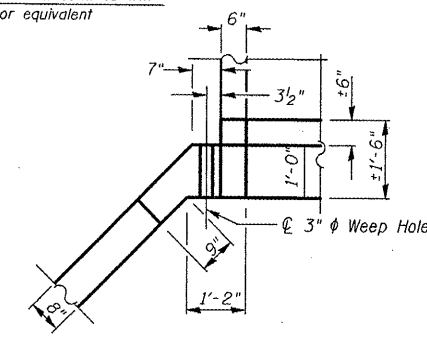


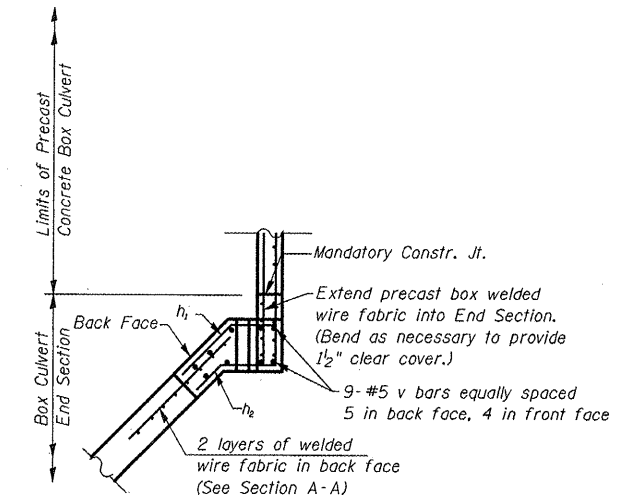
HALFSIDE ELEVATION
UPSTREAM END
DIMENSIONS AT RIGHT ANGLES TO CL PAVEMENT



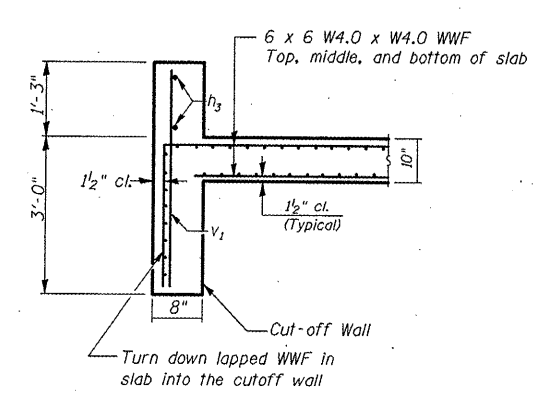
HALFSIDE ELEVATION
DOWNSTREAM END
DIMENSIONS AT RIGHT ANGLES TO CL PAVEMENT



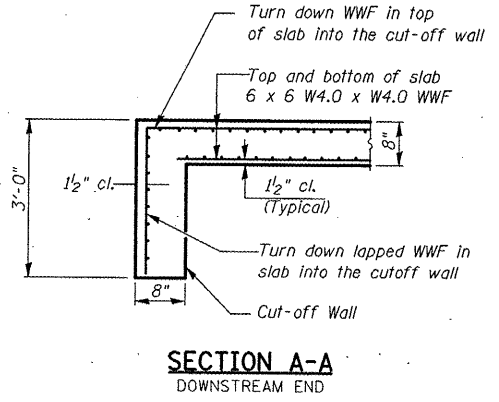
CORNER DETAIL
(Showing dimensions and weep hole)



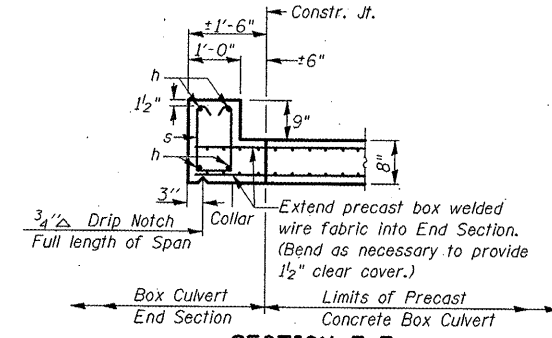
SECTION D-D
(Showing reinforcement)



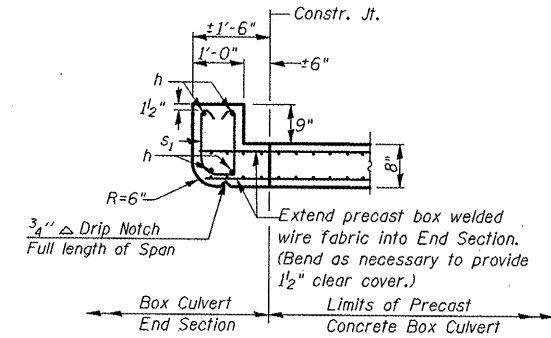
SECTION A-A
UPSTREAM END



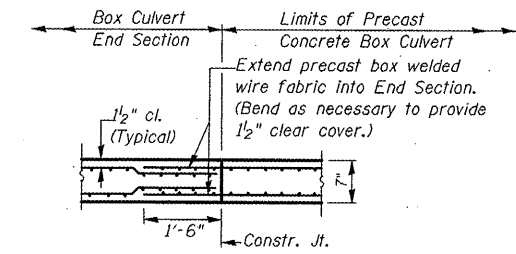
SECTION A-A
DOWNSTREAM END



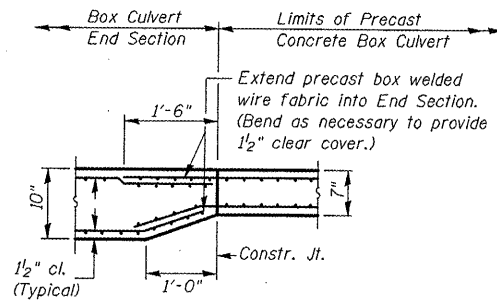
SECTION E-E
TOP SLAB / HEADWALL DOWNSTREAM END



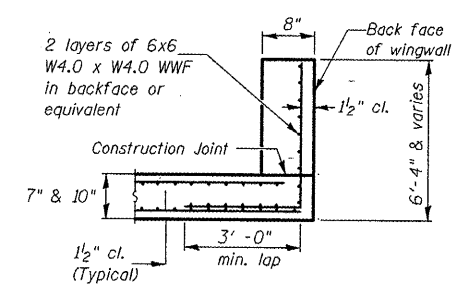
SECTION E-E
TOP SLAB / HEADWALL UPSTREAM END



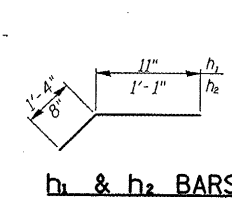
SECTION B-B
BOTTOM SLAB
(DOWNSTREAM END)



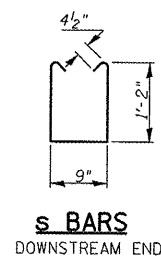
SECTION B-B
BOTTOM SLAB
(UPSTREAM END)



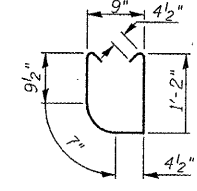
SECTION C-C
WINGWALLS AND UPSTREAM
DROP BOX



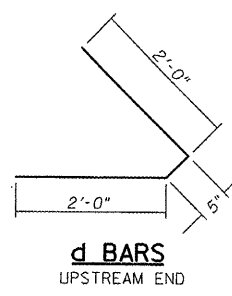
h₁ & h₂ BARS



s BARS
DOWNSTREAM END



s₁ BARS
UPSTREAM END



d BARS
UPSTREAM END

BILL OF MATERIAL (UPSTREAM END)
For Information Only
(One End Section)

Bar	No.	Size	Length	Shape
d	4	#4	4'-5"	
h	4	#6	6'-11"	
h ₁	14	#4	2'-3"	
h ₂	14	#4	1'-9"	
h ₂	14	#4	1'-9"	
s ₁	2	#4	19'-0"	
s ₂	7	#4	3'-8"	
v	18	#5	6'-9"	
v ₁	20	#4	3'-11"	
Item		Unit	Total	
Concrete Box Culverts		Cu. Yd.	7.7	
Reinforcement Bars		Pound	215.0	
Welded Wire Fabric		Sq. Yd.	525.0	

BILL OF MATERIAL (DOWNSTREAM END)
For Information Only
(One End Section)

Bar	No.	Size	Length	Shape
h	4	#6	6'-11"	
h ₁	14	#4	2'-3"	
h ₂	14	#4	1'-9"	
s	7	#4	3'-10"	
v	18	#5	6'-9"	
Item		Unit	Total	
Concrete Box Culverts		Cu. Yd.	6.3	
Reinforcement Bars		Pound	179.0	
Welded Wire Fabric		Sq. Yd.	525.0	

END SECTION DETAILS
SINGLE 5'x5' PRECAST BOX CULVERT
F.A.S. ROUTE 2484 - SECTION (125,126,127)RS-2
MCLEAN CO.
STATION 857+89.91
CULVERT NO. 3

Sheet 3 of 3

FILE NAME =	USER NAME = carroll-t	DESIGNED RTC	REVISED -
cl:\pwork\psdot\carroll-t\dms87296\10-sh-culvert-details.dgn		DRAWN RTC	REVISED -
PLOT SCALE = 44,0000 1/ IN.		CHECKED -	REVISED -
PLOT DATE = 3/3/2018		DATE -	REVISED -

STATE OF ILLINOIS
DEPARTMENT OF TRANSPORTATION

END SECTION DETAILS
BOX CULVERT REPLACEMENT AT STA. 857 + 89.91

F.A.S. RTE.	SECTION	COUNTY	TOTAL SHEETS	SHEET NO.
2484	(125,126,127)RS-2	MCLEAN	122	49
CONTRACT NO. 70510			ILLINOIS FED. AID PROJECT	

SCALE: SHEET NO. OF SHEETS STA. TO STA.