

ROAD CLOSURE DETOUR DETAIL

IL 165 AT MERNA

IL 165 & 3050E INTERSECTION

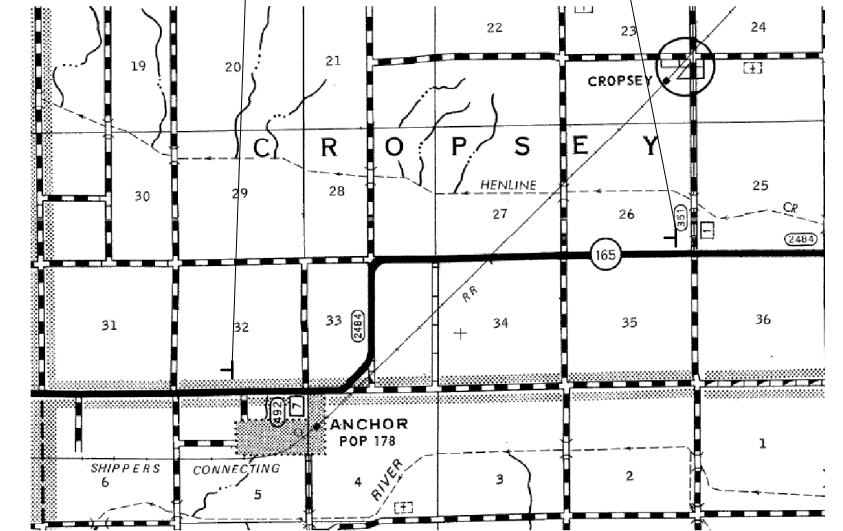
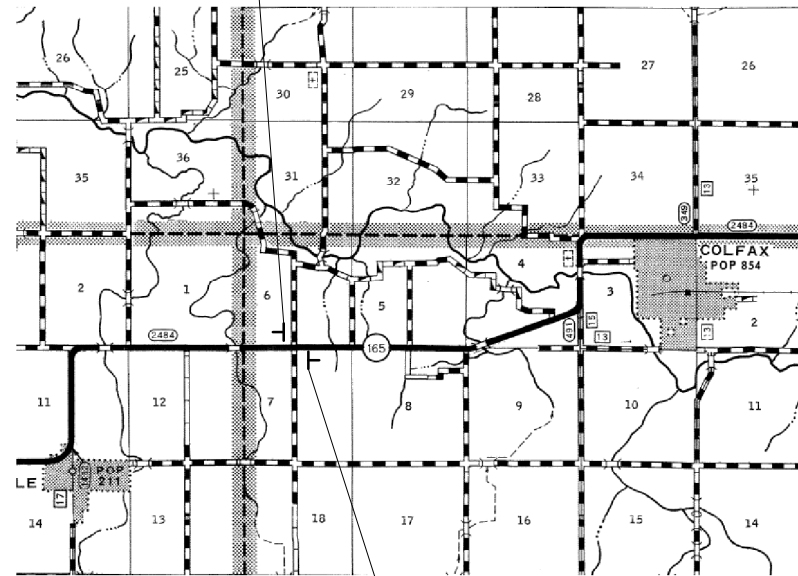
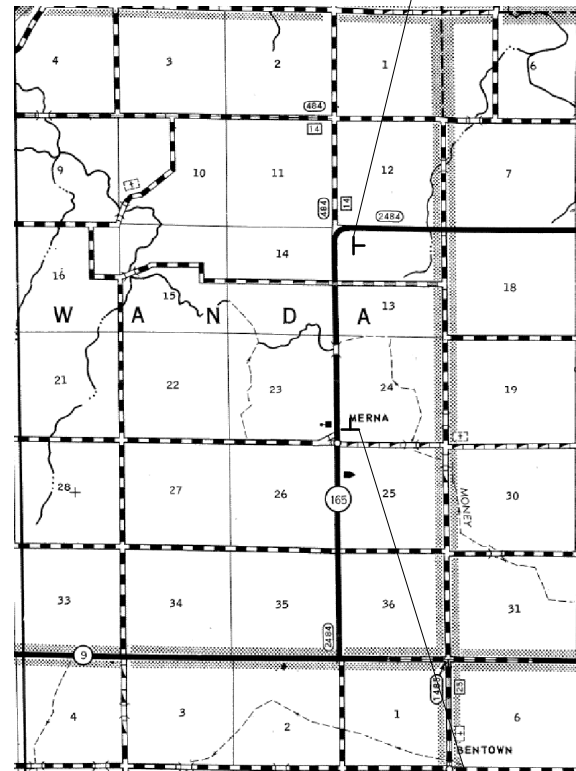
IL 165 AT ANCHOR

ERECT JUST PAST END
OF CURVE, E OF CH 14

ERECT 50' +/-
W OF RD 3050E

ERECT 100' +/-
W OF RD 3750E

ERECT BESIDE
W IL 165 SIGN



ERECT BESIDE
SPEED LIMIT 55 SIGN

ERECT 75' +/-
E OF RD 3050E

Note: All dimensions are in INCHES
(millimeters) unless otherwise shown.

FILE NAME =	USER NAME = coombessf	DESIGNED -	REVISED -
ct:\pw\work\PWIDOT\COOMBESSF\dms87296\0770510-sht-details.dgn		DRAWN -	REVISED -
	PLOT SCALE = 40.0000' / IN.	CHECKED -	REVISED -
	PLOT DATE = 1/13/2010	DATE -	REVISED -

STATE OF ILLINOIS
DEPARTMENT OF TRANSPORTATION

ROAD CLOSURE DETOUR DETAIL

SCALE: SHEET NO. OF SHEETS STA. TO STA.

F.A.S. RTE.	SECTION	COUNTY	TOTAL SHEETS	SHEET NO.
2484	(125,126,127)RS-2	MCLEAN	122	55
CONTRACT NO. 70510				
ILLINOIS FED. AID PROJECT				