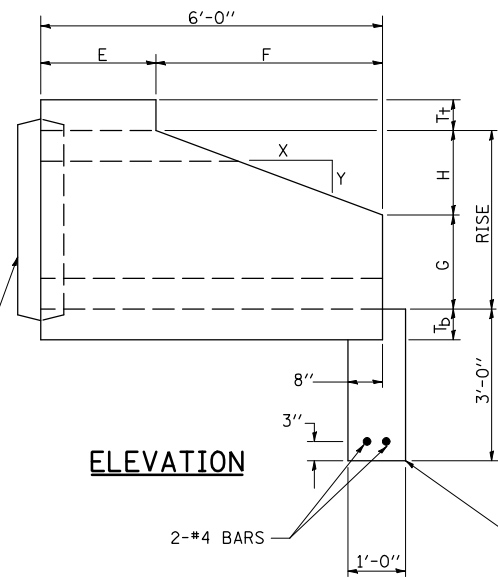
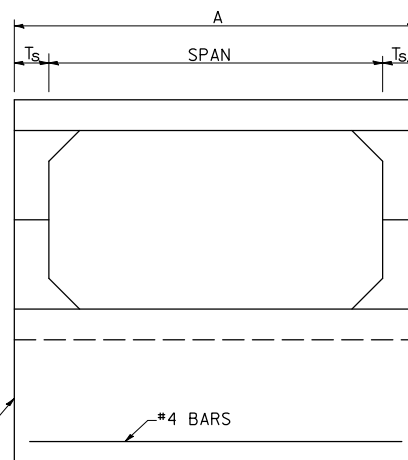


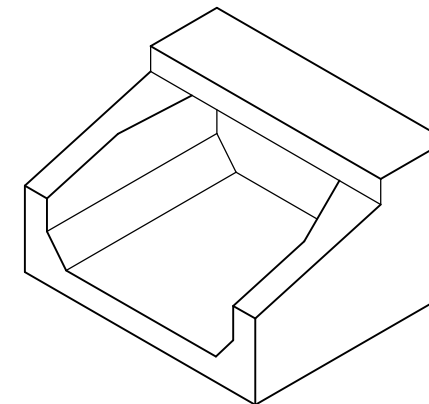
PRECAST CONCRETE BOX CULVERT END SECTION



ELEVATION

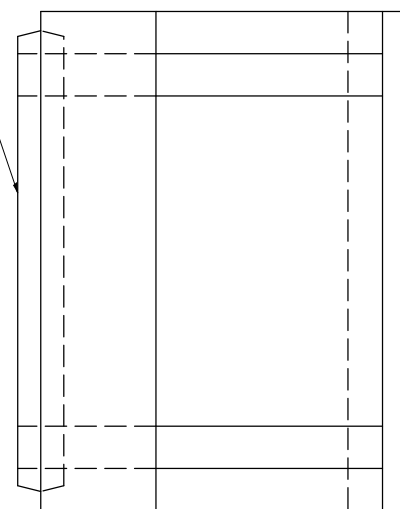


END VIEW

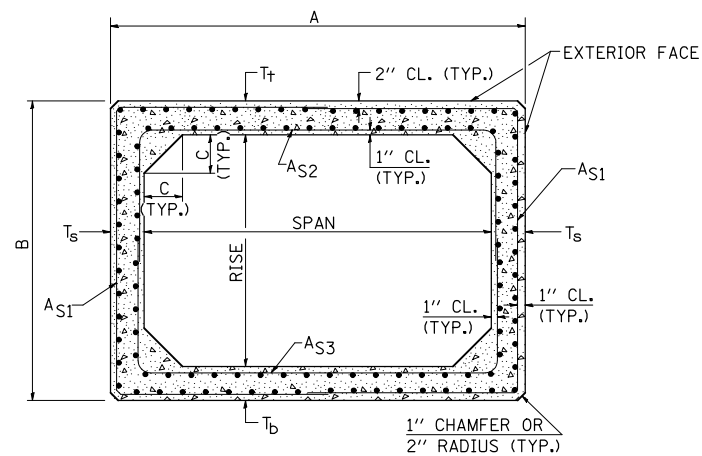


ISOMETRIC

END CONNECTION TO FIT PRECAST BOX CULVERT (BELL OR SPIGOT MAY BE OMITTED WHEN COLLARING TO AN EXISTING BOX OR HEADWALL.)



PLAN



CROSS SECTION

GENERAL NOTES

SHOP DRAWINGS SHALL BE SUBMITTED IN ACCORDANCE WITH THE REQUIREMENTS OF ARTICLE 1042.03(b) OF THE STANDARD SPECIFICATIONS.

MINIMUM CONCRETE STRENGTH SHALL BE 5000 PSI AFTER 28 DAYS.

THE JOINTS OF THE PRECAST BOX SECTIONS SHALL BE SEALED WITH MASTIC IN ACCORDANCE WITH SECTION 1055 OF THE STANDARD SPECIFICATIONS FOR ROAD AND BRIDGE CONSTRUCTION.

THE TERMS AS1, AS2, & AS3 DENOTE THE REQUIRED STEEL AREAS FOR REINFORCEMENT AS SPECIFIED IN AASHTO M273. REINFORCEMENT SHALL BE WELDED WIRE FABRIC CONFORMING TO AASHTO M55-81.

DIMENSIONS

SPAN X RISE	T _t (INCHES)	T _b (INCHES)	T _s (INCHES)	A (FT.-IN.)	B (FT.-IN.)	C (INCHES)	E (FT.-IN.)	F (FT.-IN.)	G (FT.-IN.)	H (FT.-IN.)	SLOPE (X:Y)
6' X 2'	8	7	7	7-2	3-3	7	3-0	3-0	1-0	1-0	3:1
6' X 3'	8	7	7	7-2	4-3	7	3-0	3-0	2-0	1-0	3:1

Note: All dimensions are in INCHES (millimeters) unless otherwise shown.

FILE NAME =	USER NAME = coombessf	DESIGNED -	REVISED -	STATE OF ILLINOIS DEPARTMENT OF TRANSPORTATION	BOX CULVERT END SECTION (M273)	F.A.S. RTE.	SECTION	COUNTY	TOTAL SHEETS	SHEET NO.	
ct:\pw\work\PWIDOT\COOMBESSF\dms87296\0770510-sht-details.dgn	DRAWN - JDC	REVISED -	2484			(125,126,127)RS-2	MCLEAN	122	56		
PLOT SCALE = 40.0000' / IN.	CHECKED -	REVISED -	CONTRACT NO. 70510								
PLOT DATE = 1/13/2010	DATE - 12/29/08	REVISED -	ILLINOIS FED. AID PROJECT								
SCALE:						SHEET NO.	OF SHEETS	STA.	TO STA.		