

CONTRACT NO. 70529				
F.A.P. RTE.	SECTION	COUNTY	TOTAL SHEETS	SHEET NO.
315	(102X)BR, BR-3	MCLEAN	42	1

STATE OF ILLINOIS  
DEPARTMENT OF TRANSPORTATION  
DIVISION OF HIGHWAYS

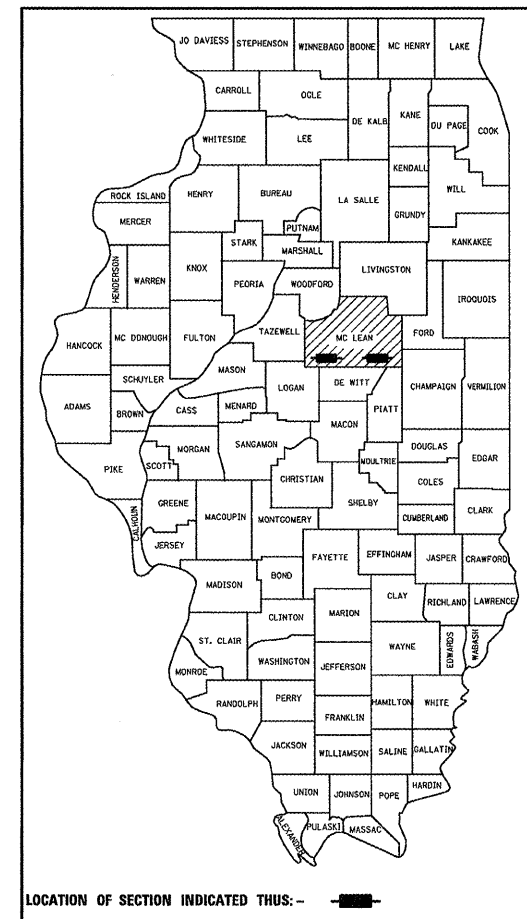
**PROPOSED  
HIGHWAY PLANS**

FAP ROUTE 315 (US 136)  
SECTION (102X)BR, BR-3  
PROJECT  
MCLEAN COUNTY

C-95-049-06

BRIDGE REPLACEMENT INTERSECTION IMPROVEMENT  
SALT CREEK 3.2 MI & STREAM 1.1 MI W OF I-74

D-95-048-06



LOCATION OF SECTION INDICATED THUS: - [shaded rectangle] -

FOR INDEX OF SHEETS, SEE SHEET NO. 2  
FOR SUMMARY OF QUANTITIES, SEE SHEET NO. 7-10

FUNCTIONAL CLASSIFICATION: OTHER PRINCIPAL  
ARTERIAL

LOCATION 1 \*\*

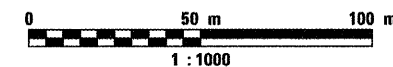
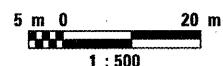
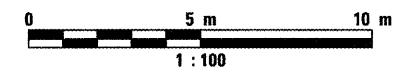
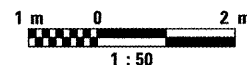
ADT = 1300 (2001)  
PV = 68.0%  
MU = 20.0%  
SU = 12.0%

LOCATION 2 \*\*

ADT = 1275 (2001)  
PV = 68.0%  
MU = 20.0%  
SU = 12.0%

\*\* LOCATION 1 IS FROM STA. 40+500 TO STA. 40+675  
LOCATION 2 IS FROM STA. 43+975 TO STA. 44+150

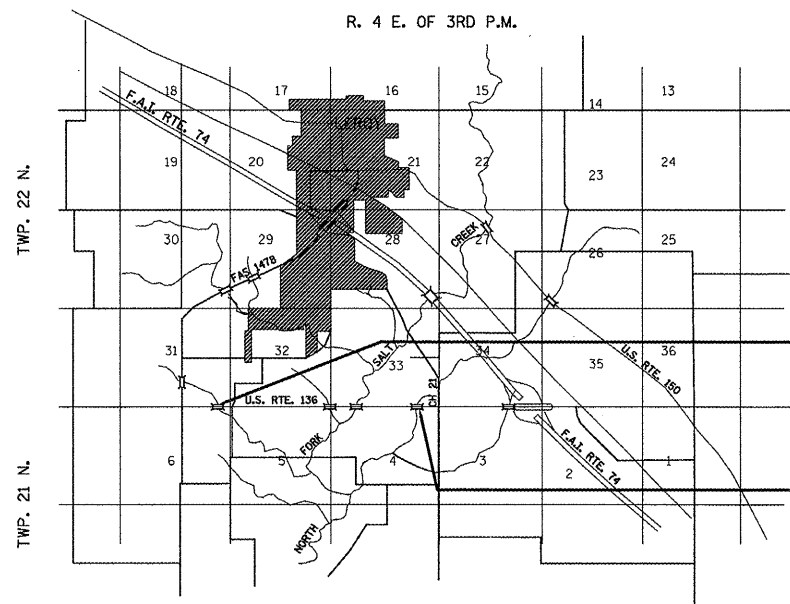
METRIC RATIOS



FULL SIZE PLANS HAVE BEEN PREPARED USING STANDARD  
ENGINEERING SCALES. REDUCED SIZED PLANS WILL NOT  
CONFORM TO STANDARD SCALES. IN MAKING MEASUREMENTS  
ON REDUCED PLANS, THE ABOVE SCALES MAY BE USED.

J.U.L.I.E.  
JOINT UTILITY LOCATION INFORMATION FOR EXCAVATION  
1-800-892-0123

CONTRACT NO. 70529



MAP SCALE:



\*\* LOCATION 1 NET LENGTH OF SECTION 175 m  
GROSS LENGTH OF SECTION 175 m

\*\* LOCATION 2 NET LENGTH OF SECTION 175 m  
GROSS LENGTH OF SECTION 175 m

LOCATION 1  
STA. 40 + 618.180  
SN 057-8302(P)  
SN 057-0151(E)  
2 @ 2.4m X 2.1m X 19.1m  
PCBC (M259) W/CIP  
SOLDIER PILE WING WALLS

LOCATION 2  
STA. 44 + 045.000  
SN 057-2039(P)  
SN 057-0096(E)  
2 @ 2.4m X 3.3m X 23.1m  
PCBC (M259) W/CIP  
SOLDIER PILE WING WALLS

STATE OF ILLINOIS  
DEPARTMENT OF TRANSPORTATION  
DIVISION OF HIGHWAYS

SUBMITTED 1/28 20 10  
*Jeff M. Sherer*  
DEPUTY DIRECTOR OF HIGHWAYS, REGION THREE ENGINEER

March 19 20 10  
*Scott E. Stitt, P.E./E*  
ENGINEER OF DESIGN AND ENVIRONMENT

March 19 20 10  
*Christine M. Reed/BE*  
DIRECTOR, DIVISION OF HIGHWAYS

PRINTED BY THE AUTHORITY  
OF THE STATE OF ILLINOIS

PROJECT ENGINEER: KEVIN TRAPP

SQUAD LEADER: JEFF M. SHERER

DESIGNER: JEFF M. SHERER