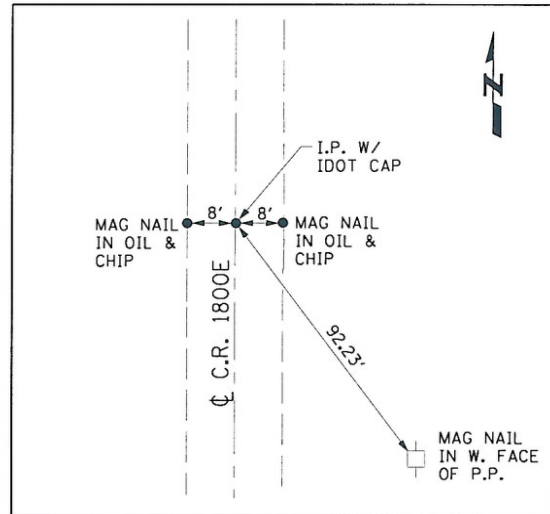
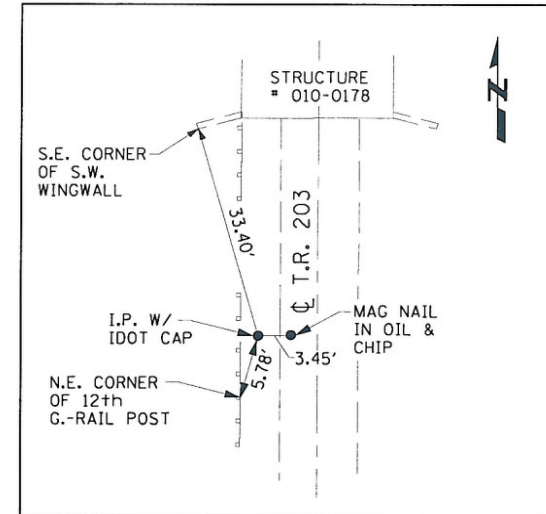


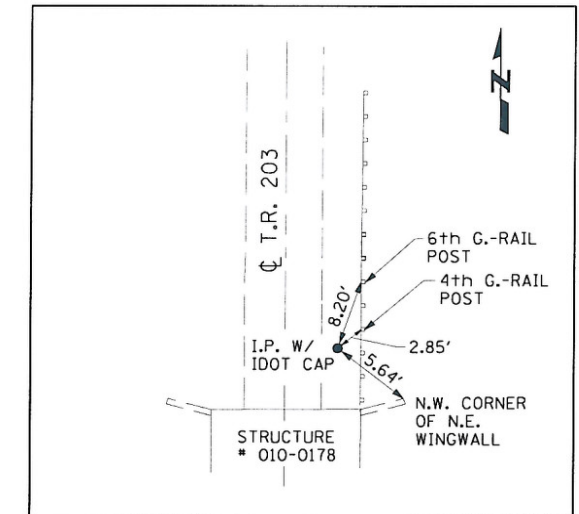
P.O.T. #3 STA. 68+27.86



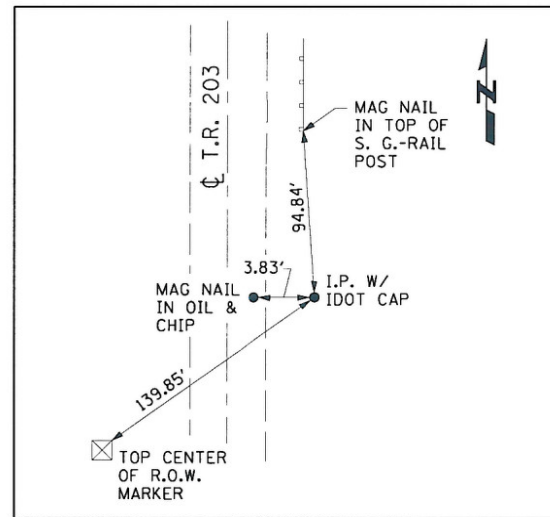
P.O.T. #4 STA. 31+92.90



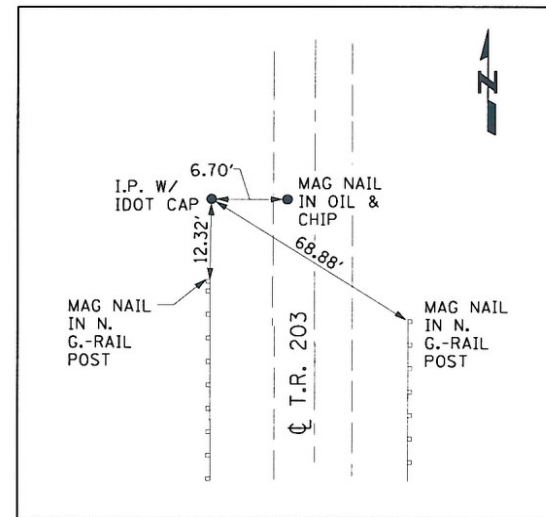
T.S. #400 STA. 51+32.26, 11.49' RT



T.S. #401 STA. 48+99.06, 12.18' LT



T.S. #402 STA. 58+75.17, 12.05' LT



T.S. #403 STA. 42+08.55, 14.22' RT

BM #4877-1
CHISELED SQUARE ON TOP OF THE WEST END
OF THE NORTH ABUTMENT OF STRUCTURE NO. 010-0178
STA 50+89.70 16.80' LT ELEVATION = 705.65

BM #4877-2
CHISELED SQUARE ON TOP OF THE EAST END
OF THE SOUTH ABUTMENT OF STRUCTURE NO. 010-0178
STA 49+09.60 17.20' RT ELEVATION = 705.65

HURST-ROSCHE ENGINEERS, INC.
HILLSBORO, ILLINOIS 62049
(217)532-3959 FAX (217)532-3212



FILE NAME =	USER NAME = HURST-ROSCHE	DESIGNED = JJC	REVISED =
ts:\192-4199.WD*3.1R230.over.1-74\dgn\057750-sht-ATB.dgn		DRAWN = UJ	REVISED =
	PLOT SCALE = 40,000/1" = 1/4"	CHECKED = MAR	REVISED =
	PLOT DATE = 1/28/2010	DATE = 01-27-10	REVISED =

STATE OF ILLINOIS
DEPARTMENT OF TRANSPORTATION

ALIGNMENT, TIES & BENCHMARKS

SCALE: NONE SHEET NO. 1 OF 1 SHEETS STA. TO STA.

F.A.I. RTE.	SECTION	COUNTY	TOTAL SHEETS	SHEET NO.
74	(10-6)HBR-5	CHAMPAIGN	63	9
CONTRACT NO. 70750				
FED. ROAD DIST. NO. 5 ILLINOIS FED. AID PROJECT				