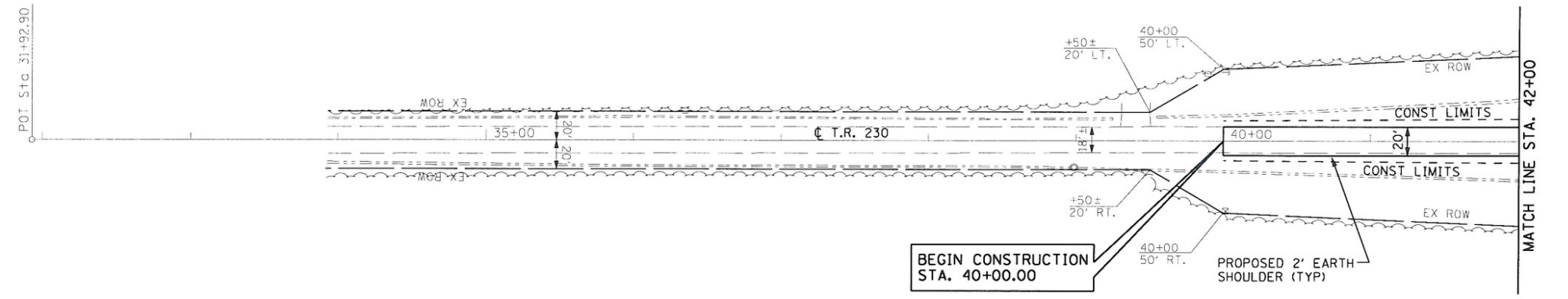
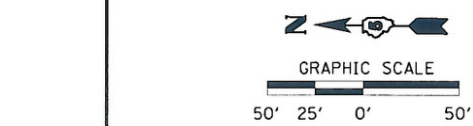
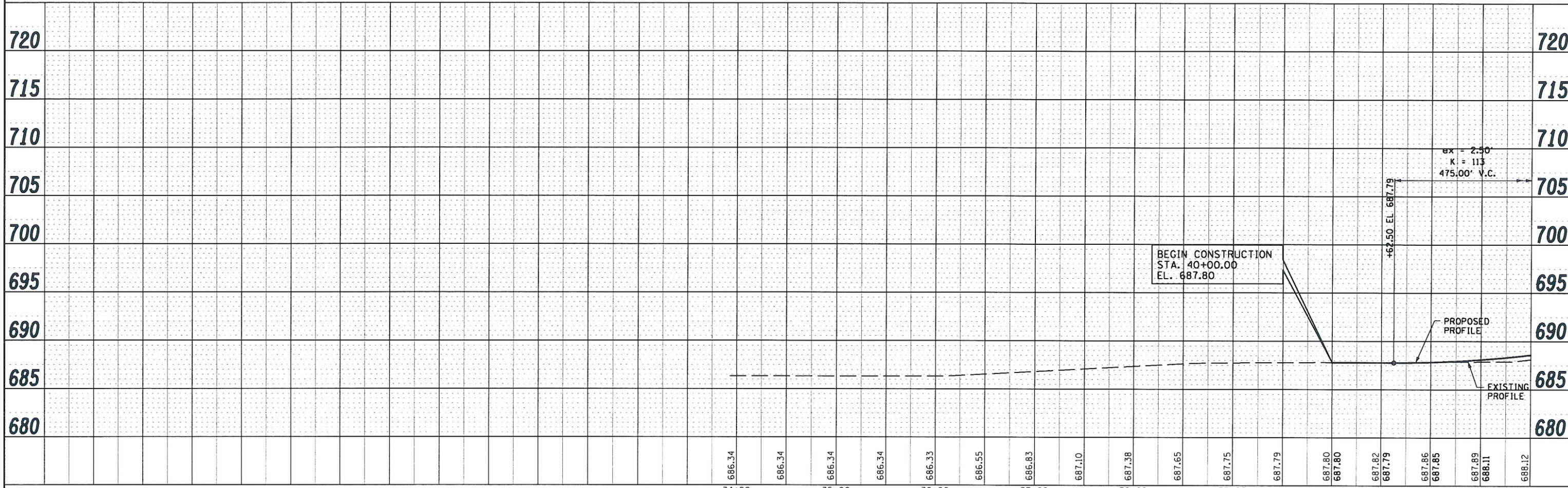


DATE	BY
DATE	BY
DATE	BY



DATE	BY
DATE	BY
DATE	BY

HURST-ROSCHKE ENGINEERS, INC.
 HILLSBORO, ILLINOIS 62049
 (217)532-3959 FAX (217)532-3212



FILE NAME =	USER NAME = HURST-ROSCHKE	DESIGNED - JJC	REVISED -
T:\198-4199_W0*3_TR230_over_1-74\dgn\0578	58-sht-plnpr-f22.dgn	DRAWN - TWC	REVISED -
	PLT SCALE = 1/25000 1/4" = 100'	CHECKED - MAR	REVISED -
	PLT DATE = 1/28/2010	DATE - 01-27-10	REVISED -

STATE OF ILLINOIS
 DEPARTMENT OF TRANSPORTATION

TR 230 - PLAN AND PROFILE

SCALE: 1:50 SHEET NO. 1 OF 3 SHEETS STA. 34+00 TO STA. 42+00

F.A.I. RTE.	SECTION	COUNTY	TOTAL SHEETS	SHEET NO.
74	(10-6)HBR-5	CHAMPAIGN	63	11
CONTRACT NO. 70750			ILLINOIS FED. AID PROJECT	