

TRAFFIC CONTROL AND PROTECTION (SPECIAL)

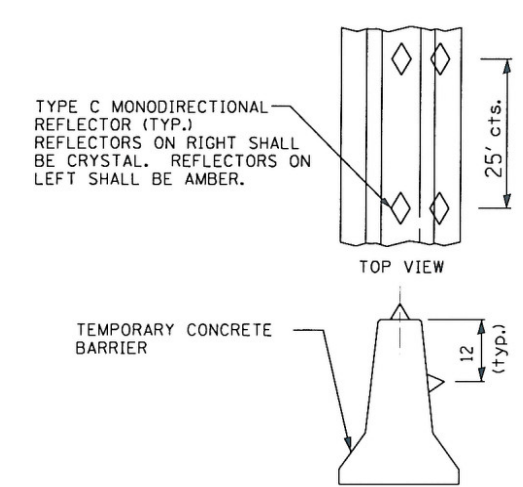
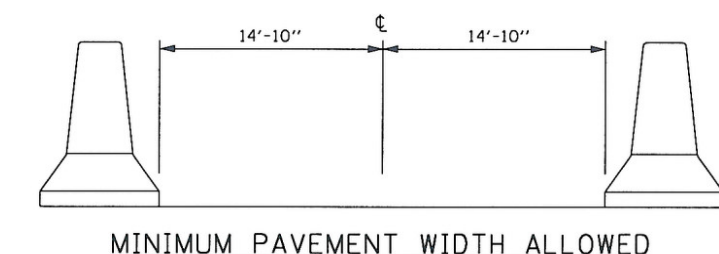
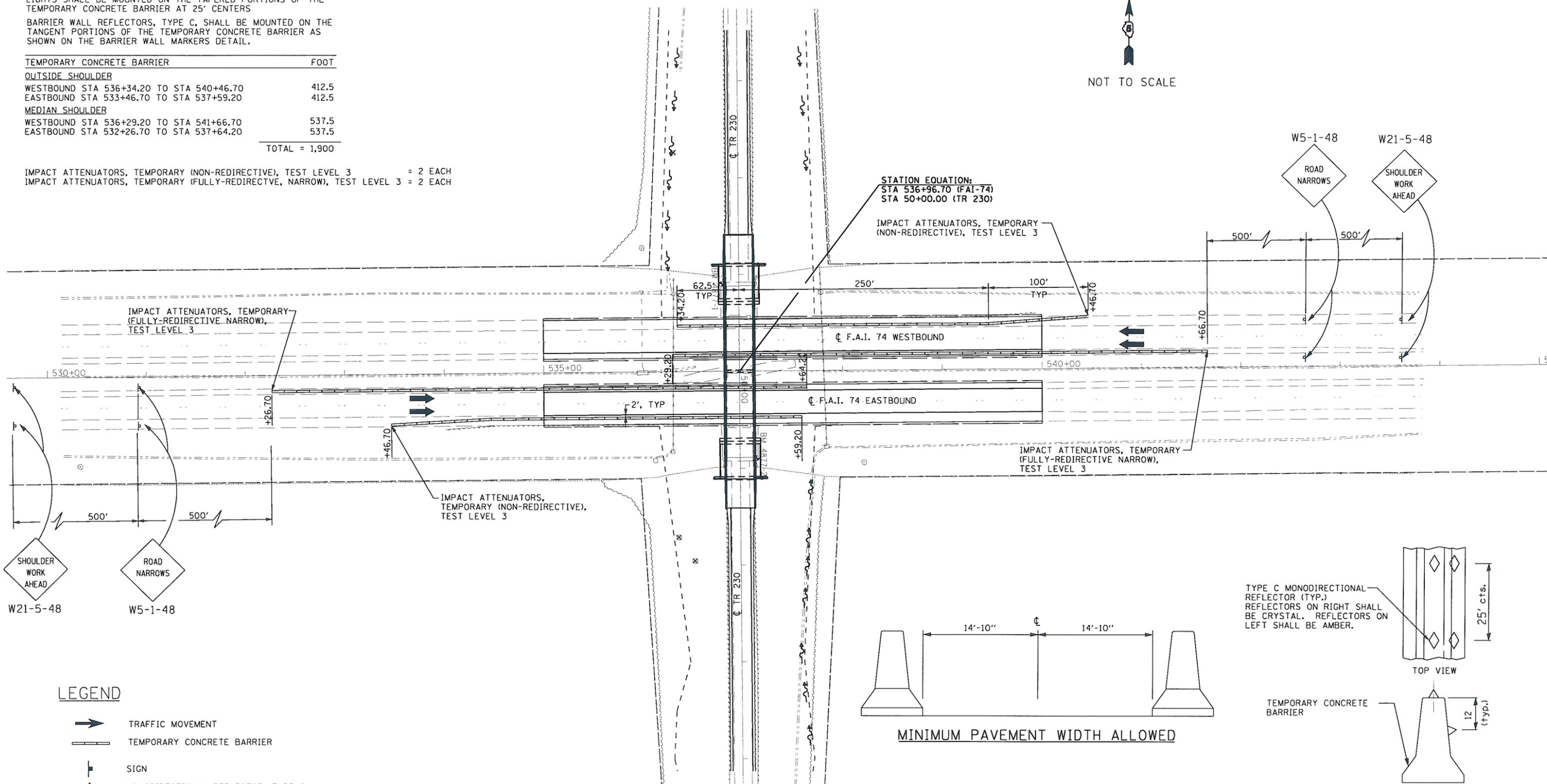
NOTES:
 UTILIZE TRAFFIC CONTROL STANDARD 701406 FOR PLACEMENT OF TEMPORARY CONCRETE BARRIER. (FLAGGER REQUIRED UNTIL BARRIER PLACEMENT COMPLETE).
 TAPERED PORTION OF THE TEMPORARY CONCRETE BARRIER SHALL BE PLACED USING A 12:1 TAPER RATE AS SHOWN ON THE PLANS
 VERTICAL PANELS WITH MONODIRECTIONAL STEADY BURNING TYPE A LIGHTS SHALL BE MOUNTED ON THE TAPERED PORTIONS OF THE TEMPORARY CONCRETE BARRIER AT 25' CENTERS
 BARRIER WALL REFLECTORS, TYPE C, SHALL BE MOUNTED ON THE TANGENT PORTIONS OF THE TEMPORARY CONCRETE BARRIER AS SHOWN ON THE BARRIER WALL MARKERS DETAIL.

TEMPORARY CONCRETE BARRIER	FOOT
OUTSIDE SHOULDER	
WESTBOUND STA 536+34.20 TO STA 540+46.70	412.5
EASTBOUND STA 533+46.70 TO STA 537+59.20	412.5
MEDIAN SHOULDER	
WESTBOUND STA 536+29.20 TO STA 541+66.70	537.5
EASTBOUND STA 532+26.70 TO STA 537+64.20	537.5
TOTAL	= 1,900

IMPACT ATTENUATORS, TEMPORARY (NON-REDIRECTIVE), TEST LEVEL 3 = 2 EACH
 IMPACT ATTENUATORS, TEMPORARY (FULLY-REDIRECTIVE, NARROW), TEST LEVEL 3 = 2 EACH



NOT TO SCALE



LEGEND

- TRAFFIC MOVEMENT
- TEMPORARY CONCRETE BARRIER
- SIGN
- MONODIRECTIONAL REFLECTOR, TYPE C
- MONODIRECTIONAL BURNING LIGHTS AND VERTICAL PANELS

HURST-ROSCH ENGINEERS, INC.
 HILLSBORO, ILLINOIS 62049
 (217)532-3959 FAX (217)532-3212



FILE NAME =	USER NAME = HURST-ROSCH	DESIGNED JJC	REVISED -	STATE OF ILLINOIS DEPARTMENT OF TRANSPORTATION	TRAFFIC CONTROL AND PROTECTION (SPECIAL)			F.A.I. RTE.	SECTION	COUNTY	TOTAL SHEETS	SHEET NO.
tr:\190-4199-wo*3-tr230-over-1-74\dgn\057750-sht-staging02.dgn	DRAWN UJ	CHECKED MAR	REVISED -					74	(10-6)HR-5	CHAMPAIGN	63	16
PLOT SCALE = 1/80.0004 1/ IN.	DATE 01-27-10	REVISED -	REVISED -		SCALE: NONE SHEET NO. 3 OF 3 SHEETS STA. TO STA.			CONTRACT NO. 70750				
PLOT DATE = 1/28/2010	REVISED -	REVISED -	REVISED -		ILLINOIS FED. AID PROJECT							