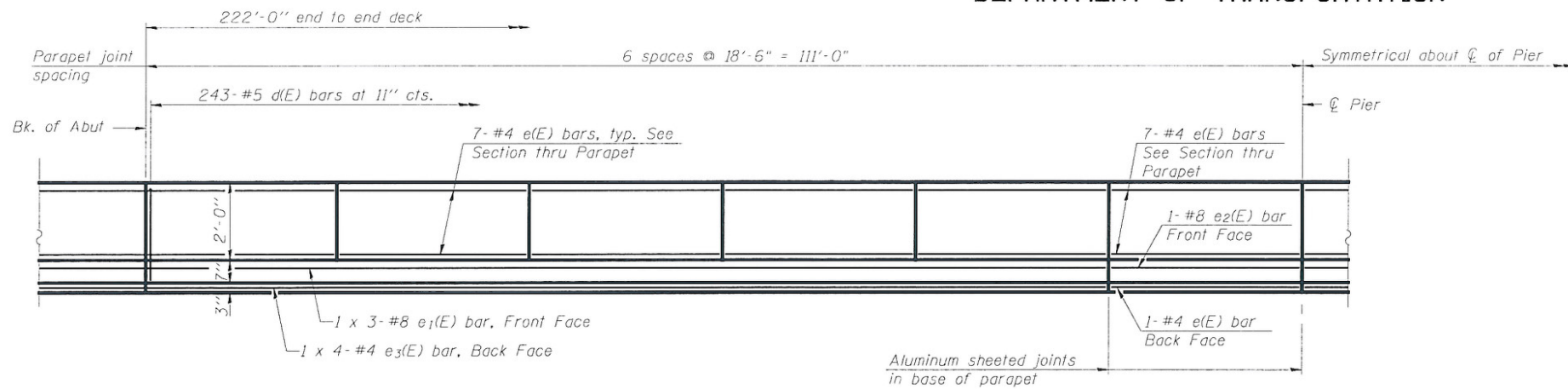


STATE OF ILLINOIS
DEPARTMENT OF TRANSPORTATION

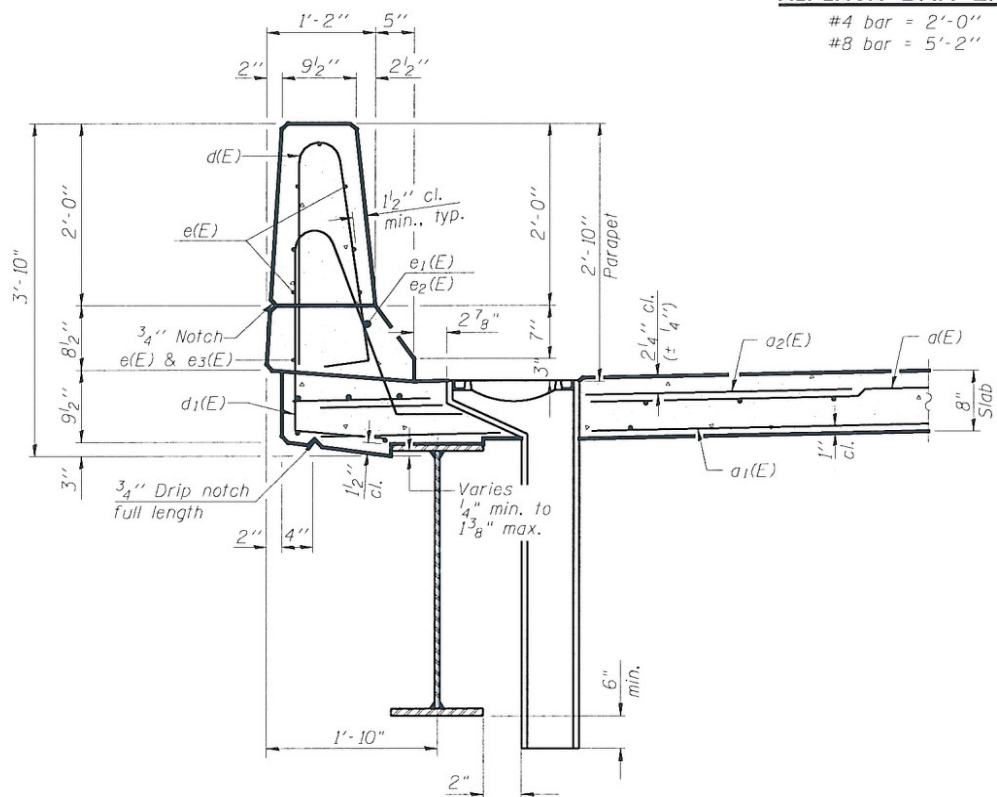
**SUPERSTRUCTURE
BILL OF MATERIAL**



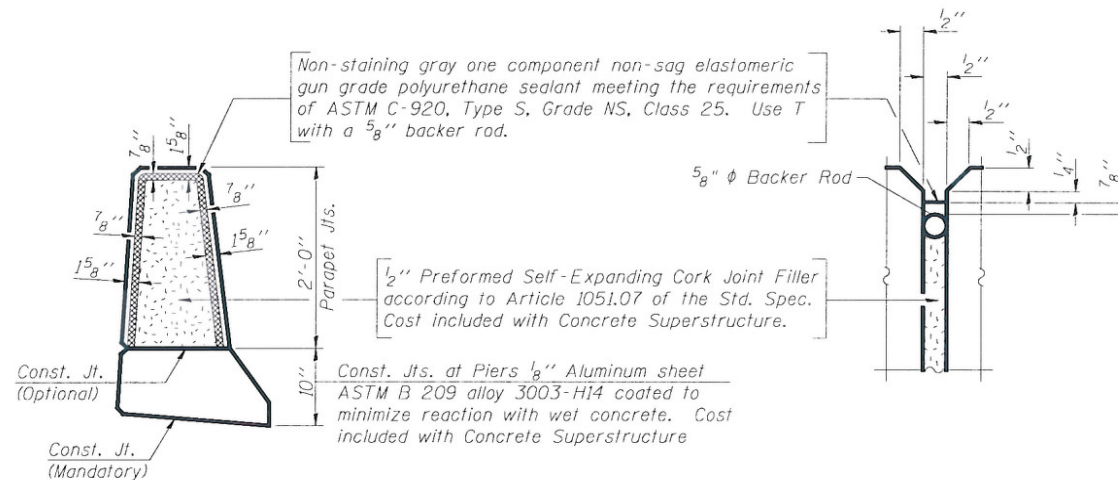
INSIDE ELEVATION OF PARAPET

MINIMUM BAR LAP

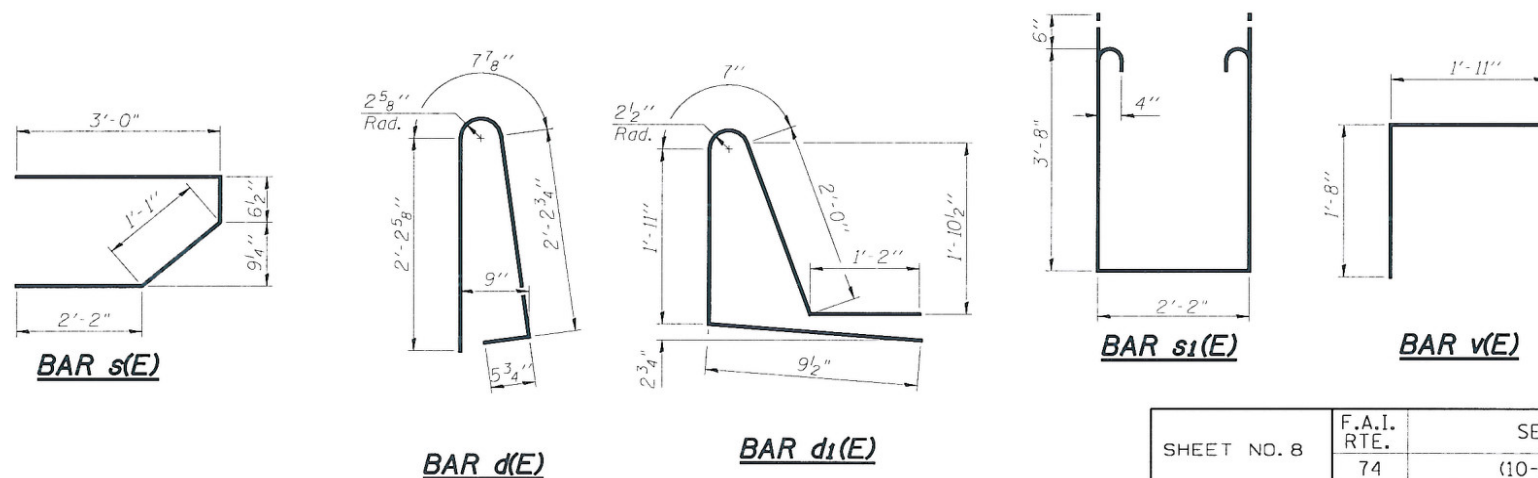
#4 bar = 2'-0"
#8 bar = 5'-2"



SECTION THRU PARAPET



PARAPET JOINT DETAILS



Bar	No.	Size	Length	Shape
a(E)	381	#5	30'-4"	—
a1(E)	267	#5	29'-8"	—
a2(E)	762	#6	6'-6"	—
a3(E)	32	#5	1'-6"	—
b(E)	272	#5	29'-11"	—
b1(E)	62	#6	31'-3"	—
b2(E)	216	#5	26'-11"	—
d(E)	486	#5	5'-7"	⌋
d1(E)	486	#5	6'-6"	⌋
e(E)	172	#4	18'-2"	—
e1(E)	12	#8	34'-3"	—
e2(E)	4	#8	18'-2"	—
e3(E)	16	#4	24'-8"	—
m(E)	10	#6	30'-10"	—
m1(E)	24	#6	8'-6"	—
m2(E)	10	#6	5'-2"	—
m3(E)	4	#6	1'-6"	—
s(E)	72	#5	6'-10"	⌋
s1(E)	58	#4	10'-6"	⌋
v(E)	62	#5	3'-7"	⌋
Reinforcement Bars, Epoxy Coated		Pound	57,020	
Concrete Superstructure		Cu. Yds.	250.1	

Bars indicated thus 1 x 4-#4 etc. indicates 1 line of bars with 4 lengths per line.

**SUPERSTRUCTURE DETAILS
STRUCTURE NO. 010-0288**

DESIGNED	CJC / MEB
CHECKED	JSP
DRAWN	UJ
CHECKED	MEB



SHEET NO. 8 20 SHEETS	F.A.I. RTE.	SECTION	COUNTY	TOTAL SHEETS	SHEET NO.
	74	(10-6)HBR-5	CHAMPAIGN	63	27
	SN 010-0288		CONTRACT NO. 70750		
FED. ROAD DIST. NO. 5 ILLINOIS FED. AID PROJECT					