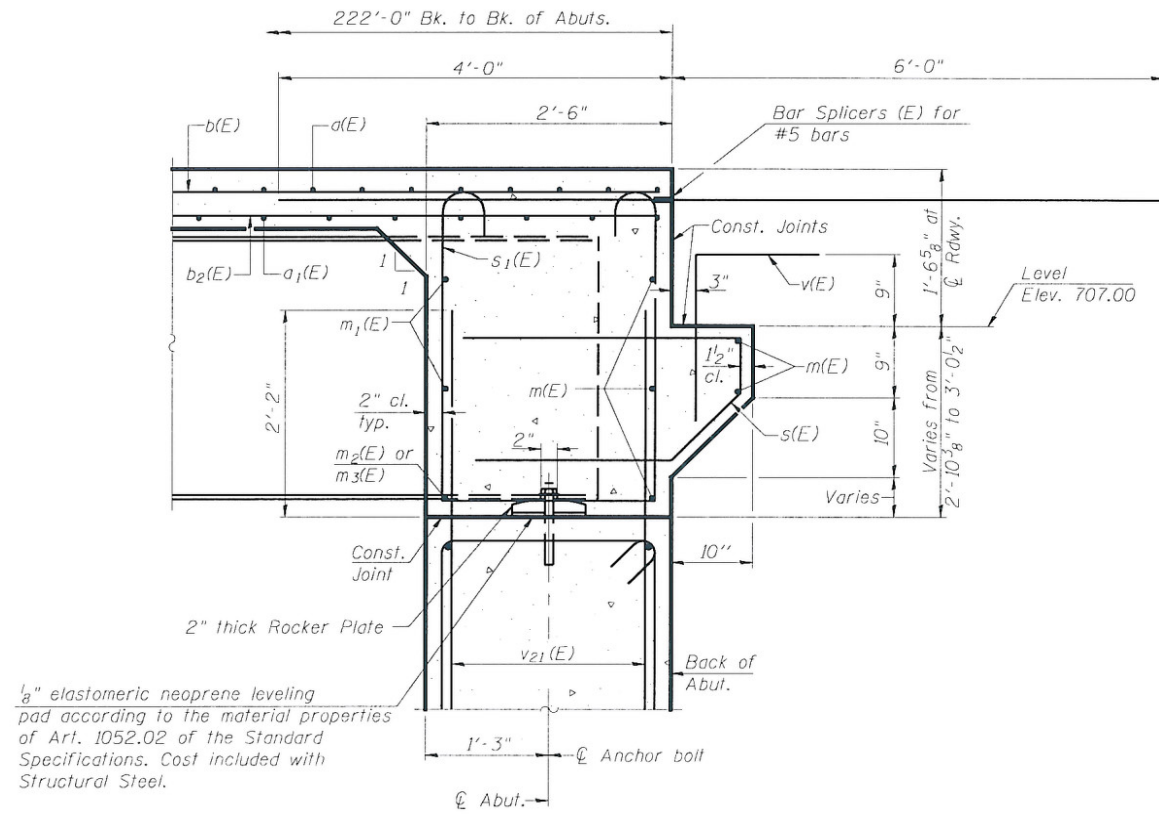


DIAPHRAGM ELEVATION AT ABUTMENT

Notes:
 Reinforcement bars in diaphragm are billed with superstructure on sheet 8 of 20.
 Concrete in diaphragm is included with Concrete Superstructure on sheet 8 of 20.
 For details of bars s(E), s1(E), & v(E) see sheet 8 of 20.
 The s(E) and s1(E) bars shall be placed parallel to the beams.
 v21(E) bars are billed with abutments on sheet 15 of 20.

MIN. BAR LAP
 #6 bar = 3'-4"



SECTION A-A

**INTEGRAL ABUTMENT
 DIAPHRAGM DETAILS
 STRUCTURE NO. 010-0288**

DESIGNED	CJC / MEB
CHECKED	JSP
DRAWN	UJ
CHECKED	MEB



SHEET NO. 9 20 SHEETS	F.A.I. RTE.	SECTION	COUNTY	TOTAL SHEETS	SHEET NO.
	74	(10-6)HBR-5	CHAMPAIGN	63	28
SN 010-0288			CONTRACT NO. 70750		
FED. ROAD DIST. NO. 5 ILLINOIS FED. AID PROJECT					