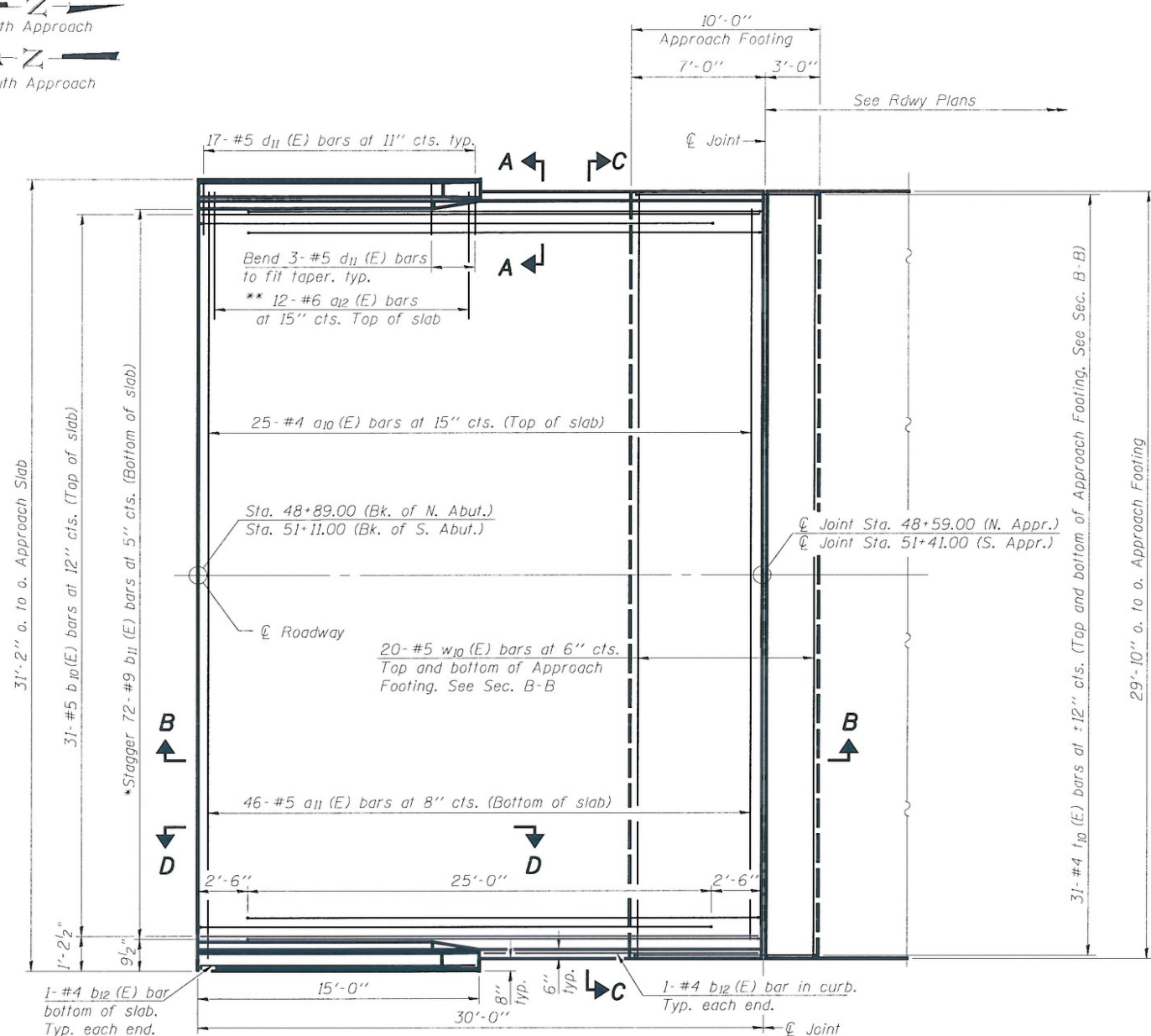
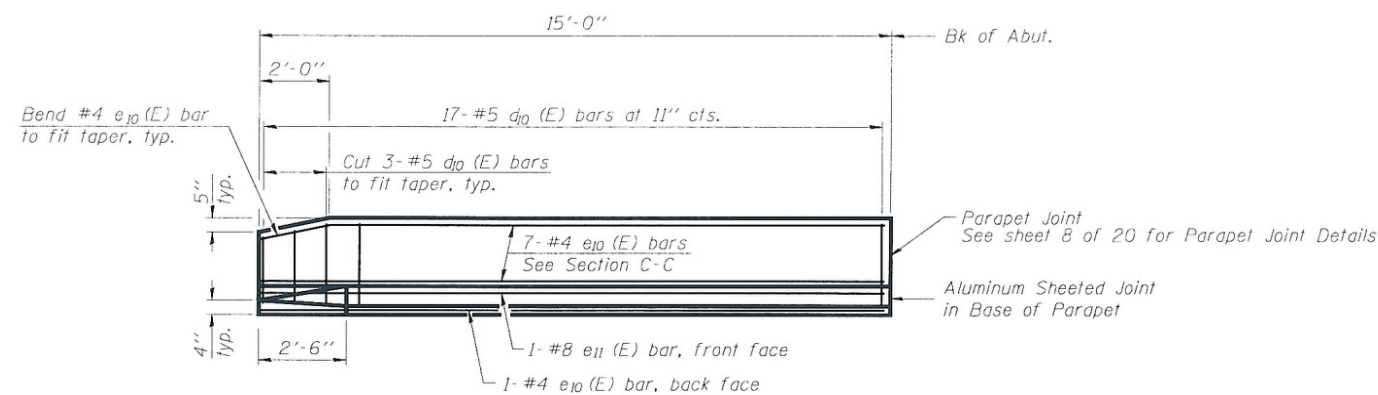


Notes:
See sheet 11 of 20 for Sections B-B & C-C.
 a_{10} (E), a_{11} (E), and w_{10} (E) bar spacings measured parallel to C.Rdwy.

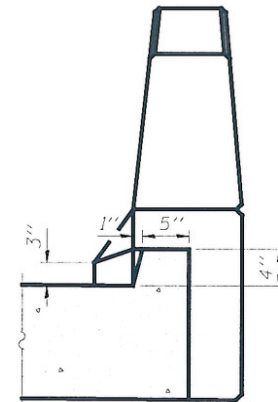


PLAN

* Tilt #9 b_{11} (E) bars as required to maintain clearance.
** Alternate with a_{10} (E) bars, typ. ea. parapet.



VIEW D-D



VIEW A-A

DESIGNED	CJC
CHECKED	MEB
DRAWN	UJ
CHECKED	MEB

HR
HURST-ROSCHÉ
ENGINEERS, INC.
PROFESSIONAL DESIGN NUMBER: 184-089298

BRIDGE APPROACH SLAB DETAILS
STRUCTURE NO. 010-0288

SHEET NO. 10 20 SHEETS	F.A.I. RTE. 74	SECTION (10-6)HBR-5	COUNTY CHAMPAIGN	TOTAL SHEETS 63	SHEET NO. 29
	SN 010-0288		CONTRACT NO. 70750		
FED. ROAD DIST. NO. 5 ILLINOIS FED. AID PROJECT					