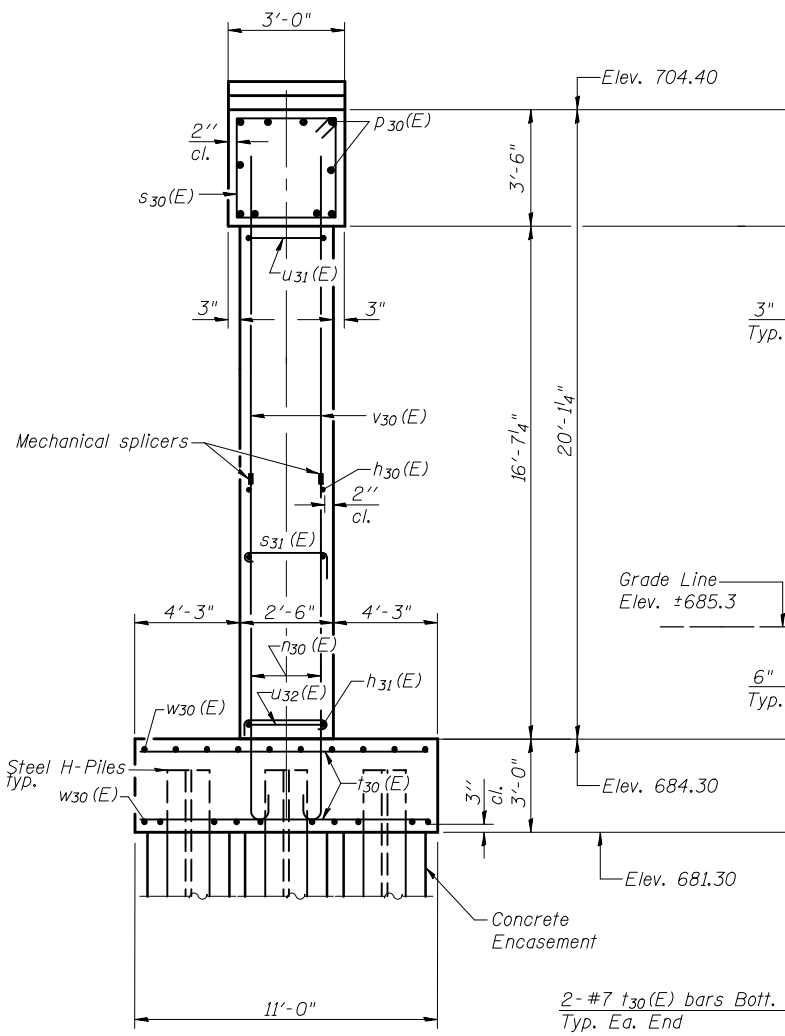
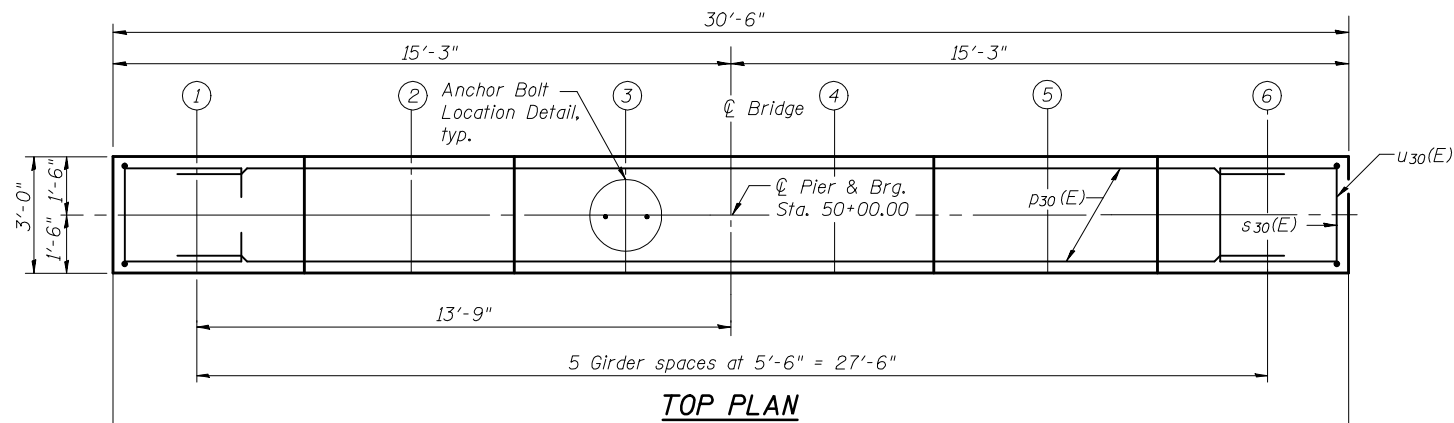


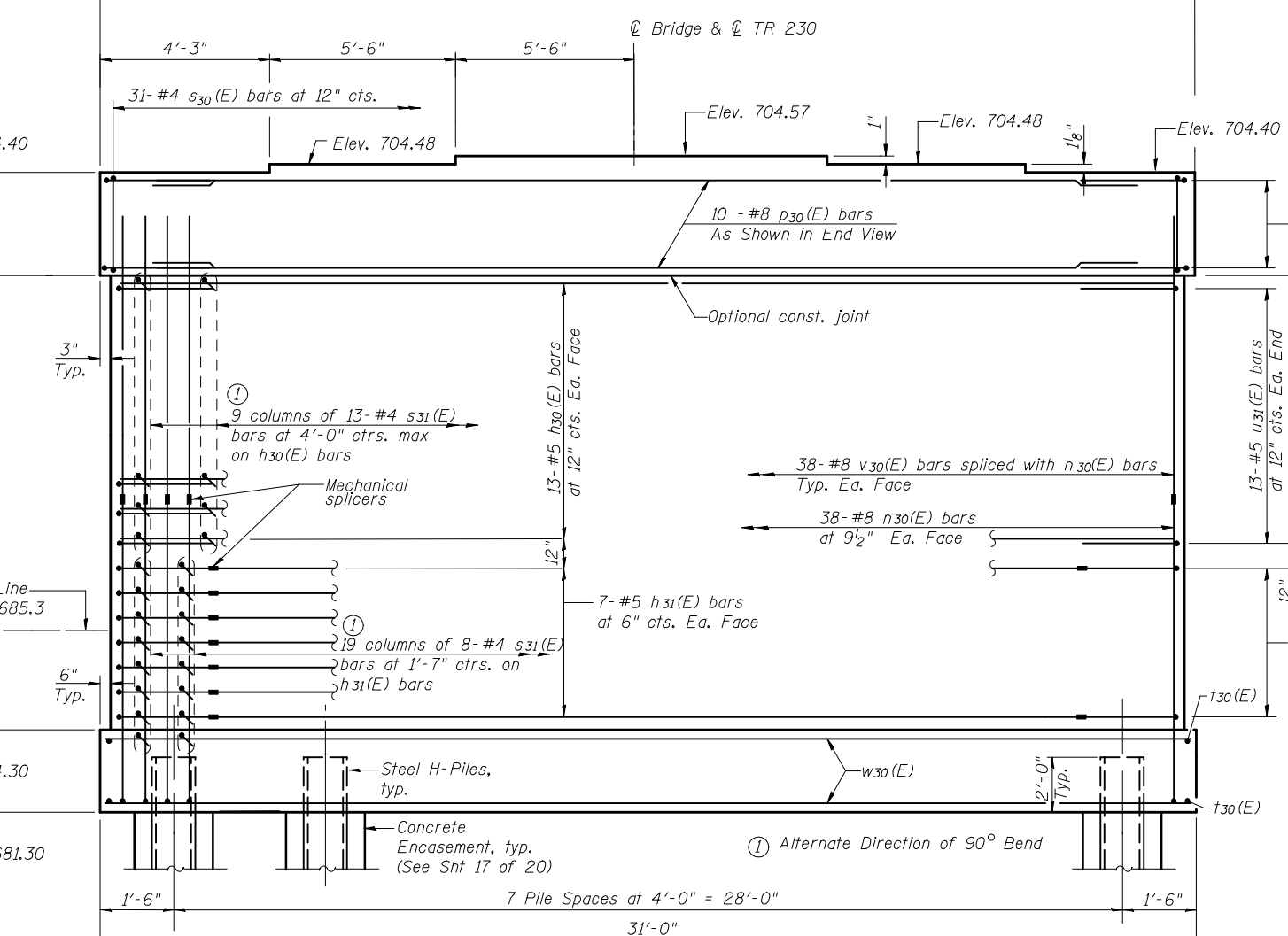
Notes:
 Space reinforcement in cap to miss anchor bolts.
 Pour steps monolithically with cap.
 For details of piles and concrete encasement, see sheet 17 of 20.

PILE DATA

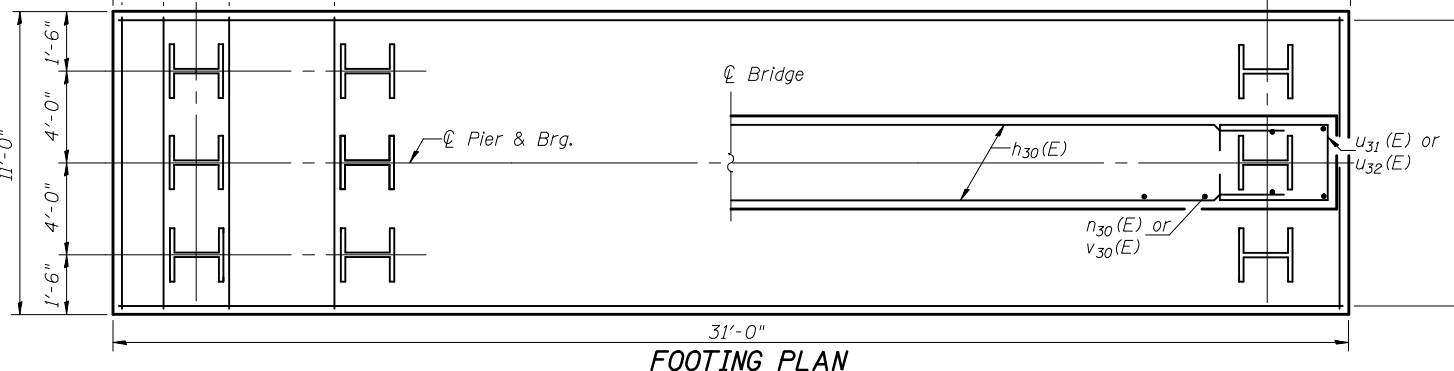
Type: HP 14x89
 Nominal Required Bearing: 364 kips
 Factored Resistance Available: 181 kips
 Est. Length: 72'
 No. Production Piles: 23
 No. Test Piles: 1



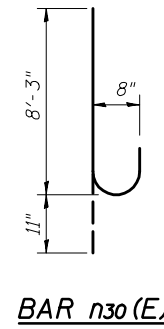
END VIEW



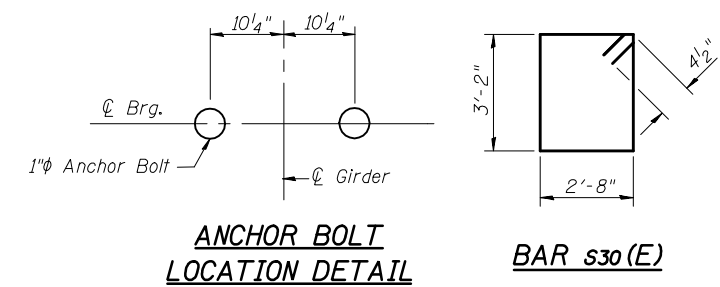
ELEVATION
(Looking South)



FOOTING PLAN

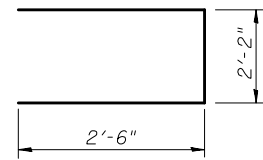


BAR n30(E)

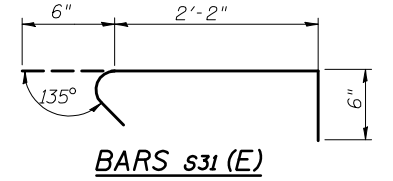


ANCHOR BOLT LOCATION DETAIL

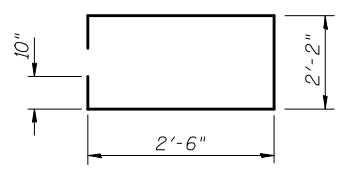
BAR s30(E)



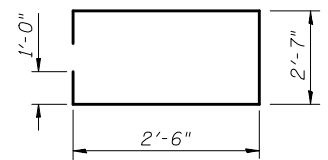
BARS u32(E)



BARS s31(E)



BARS u31(E)



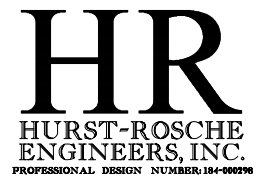
BARS u30(E)

BILL OF MATERIAL

Bar	No.	Size	Length	Shape
h30(E)	26	#5	29'-6"	—
h31(E)	14	#5	24'-6"	—
n30(E)	76	#8	9'-2"	└
p30(E)	10	#8	30'-2"	—
s30(E)	31	#4	12'-5"	□
s31(E)	269	#4	3'-2"	└
t30(E)	107	#7	10'-6"	—
u30(E)	8	#6	9'-7"	□
u31(E)	26	#5	8'-10"	□
u32(E)	14	#5	7'-2"	□
v30(E)	76	#8	13'-2"	—
w30(E)	20	#5	30'-6"	—
Concrete Structures		Cu. Yd.	96.2	
Reinforcement Bars, Epoxy Coated		Pound	10,615	
Furnishing Steel Piles HP14x89		Foot	1656	
Driving Piles		Foot	1656	
Test Pile Steel HP14x89		Each	1	
Mechanical Splicers		Each	104	
Concrete Encasement		Cu. Yd.	13.1	
Braced Excavation		Cu. Yd.	132	

PIER STRUCTURE NO. 010-0288

DESIGNED	MEB
CHECKED	JSP
DRAWN	CJC
CHECKED	MEB



SHEET NO. 16 20 SHEETS	F.A.I. RTE. 74	SECTION (10-6)HBR-5	COUNTY CHAMPAIGN	TOTAL SHEETS 63	SHEET NO. 35
	SN 010-0288		CONTRACT NO. 70750		
FED. ROAD DIST. NO. 5 ILLINOIS FED. AID PROJECT					