

BORING NO. 3
 STA. 536+96.7 120.0 FT. LT.
 ELEV. 705.3 FT.

STATE OF ILLINOIS
 DEPARTMENT OF TRANSPORTATION

BORING NO. 2
 STA. 536+96.70 120.0 FT. RT.
 ELEV. 705.1 FT.

LEGEND

N = SPT N-VALUE (AASHTO T206)

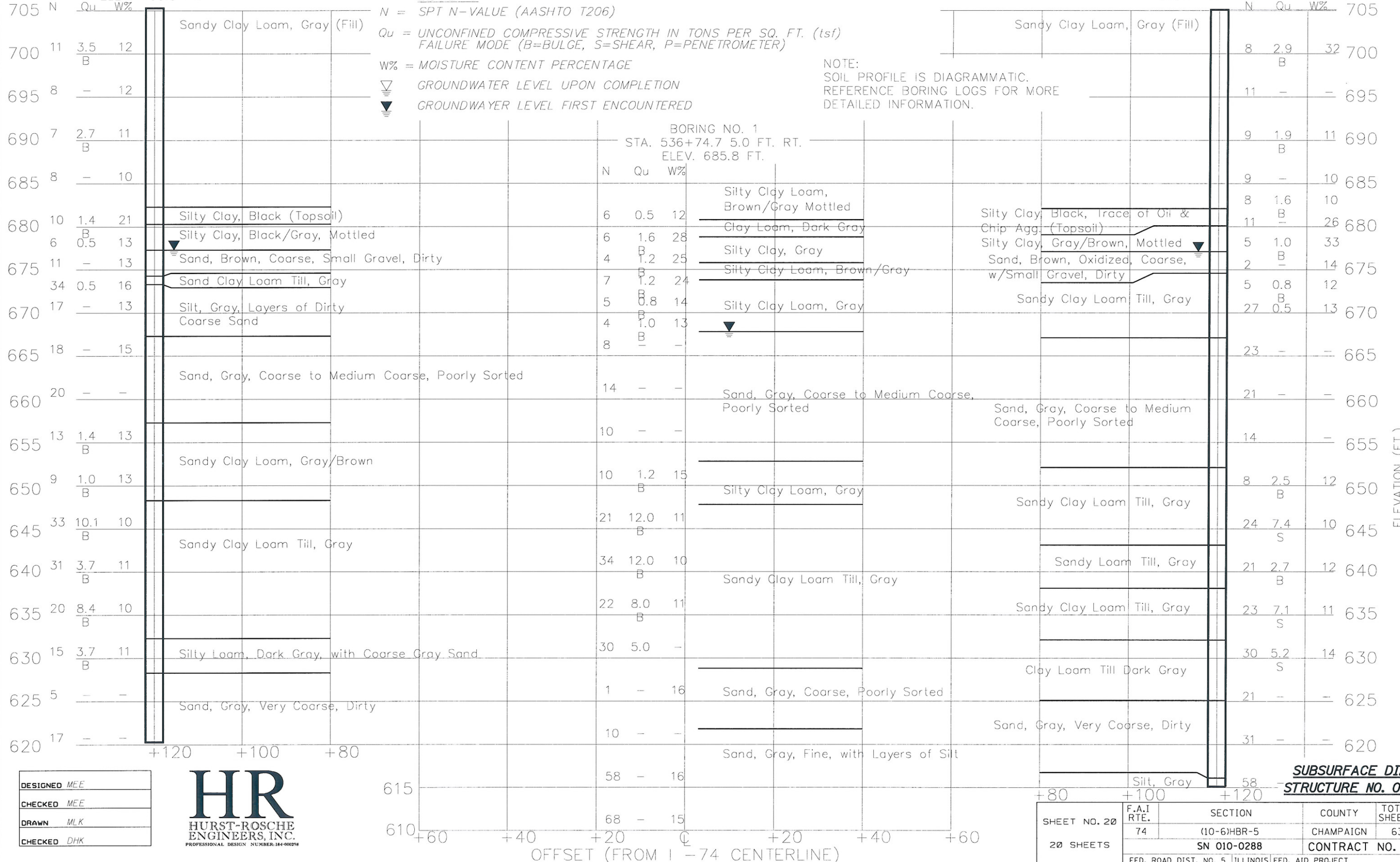
Qu = UNCONFINED COMPRESSIVE STRENGTH IN TONS PER SQ. FT. (tsf)
 FAILURE MODE (B=BULGE, S=SHEAR, P=PENETROMETER)

W% = MOISTURE CONTENT PERCENTAGE

▽ GROUNDWATER LEVEL UPON COMPLETION

▼ GROUNDWATER LEVEL FIRST ENCOUNTERED

NOTE:
 SOIL PROFILE IS DIAGRAMMATIC.
 REFERENCE BORING LOGS FOR MORE
 DETAILED INFORMATION.



BORING NO. 1
 STA. 536+74.7 5.0 FT. RT.
 ELEV. 685.8 FT.



DESIGNED MEE
 CHECKED MEE
 DRAWN MLK
 CHECKED DHK



SUBSURFACE DIAGRAM
 STRUCTURE NO. 010-0288

SHEET NO. 20 20 SHEETS	F.A.I. RTE. 74	SECTION (10-6)HBR-5 SN 010-0288	COUNTY CHAMPAIGN	TOTAL SHEETS 63	SHEET NO. 39
	FED. ROAD DIST. NO. 5 ILLINOIS FED. AID PROJECT			CONTRACT NO. 70750	