

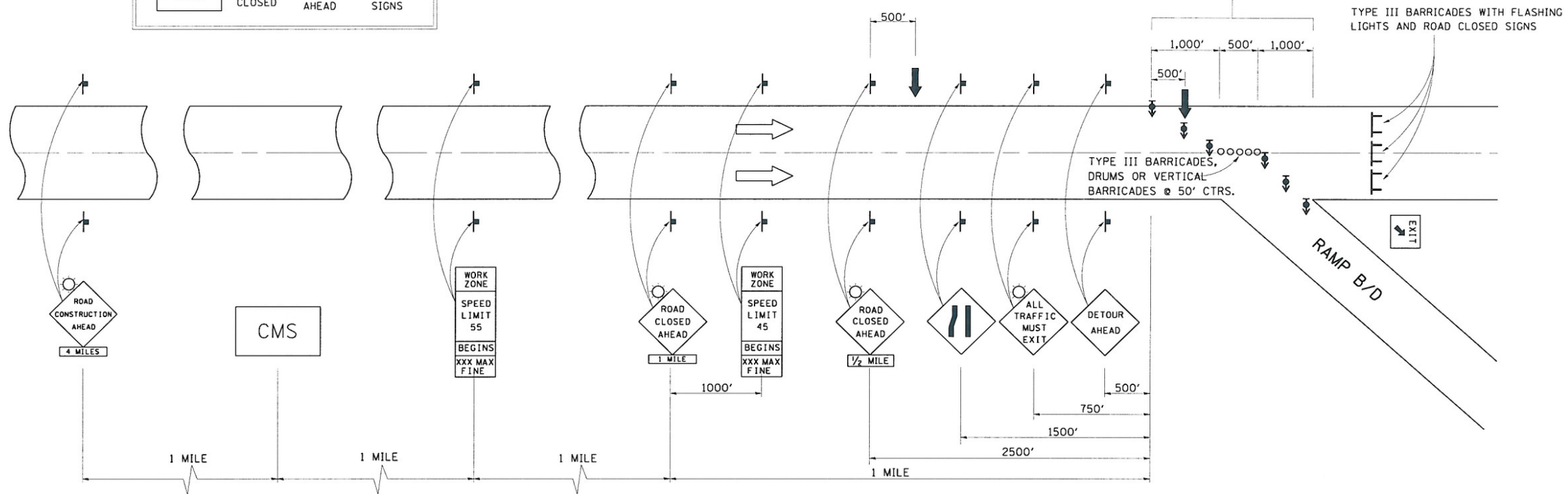
INTERSTATE DETOUR USING ENTRANCE AND EXIT RAMP

A CHANGEABLE MESSAGE SIGN SHALL BE USED IN ADVANCE OF SIGNING TO WARN OF CLOSURE

CMS ROAD CLOSED 3 MILES AHEAD FOLLOW DETOUR SIGNS

DIRECTIONAL BARRICADES WITH STEADY BURNING LIGHTS AT 50' (15 m) CTS. IN TAPER. DRUMS WITH STEADY BURNING LIGHTS IN TANGENT (BETWEEN TAPERS) AT 100' (30 m) CTS.

FOR OFF PEAK CLOSURES LESS THAN 24 HOURS, THE TANGENT SECTION MAY BE OMITTED BY APPROVAL OF THE ENGINEER.



SYMBOLS	
	ARROW BOARD
	SIGN
	DRUM W/STEADY BURNING LIGHT
	TYPE III BARRICADE
	DIRECTIONAL BARRICADE W/STEADY BURNING LIGHT
	LIGHTED FLAGGER STATIONS

Note: All dimensions are in INCHES (millimeters) unless otherwise shown.

FILE NAME =	USER NAME = HURST-ROSCHE	DESIGNED =	REVISED = 12/06
tr\192-4199_wa*3_tr230_over_1-74\dgn\057750-District5Standards.dgn		DRAWN =	REVISED =
		CHECKED =	REVISED =
		DATE =	REVISED =

STATE OF ILLINOIS
DEPARTMENT OF TRANSPORTATION

INTERSTATE DETOUR USING ENTRANCE AND EXIT RAMP

SCALE: SHEET NO. OF SHEETS STA. TO STA.

DISTRICT 5 DETAIL NO. X7011005				
F.A.I. RTE.	SECTION	COUNTY	TOTAL SHEETS	SHEET NO.
74	(10-6)HBR-5	CHAMPAIGN	63	45
CONTRACT NO. 70750				
FED. ROAD DIST. NO. 5 ILLINOIS FED. AID PROJECT				