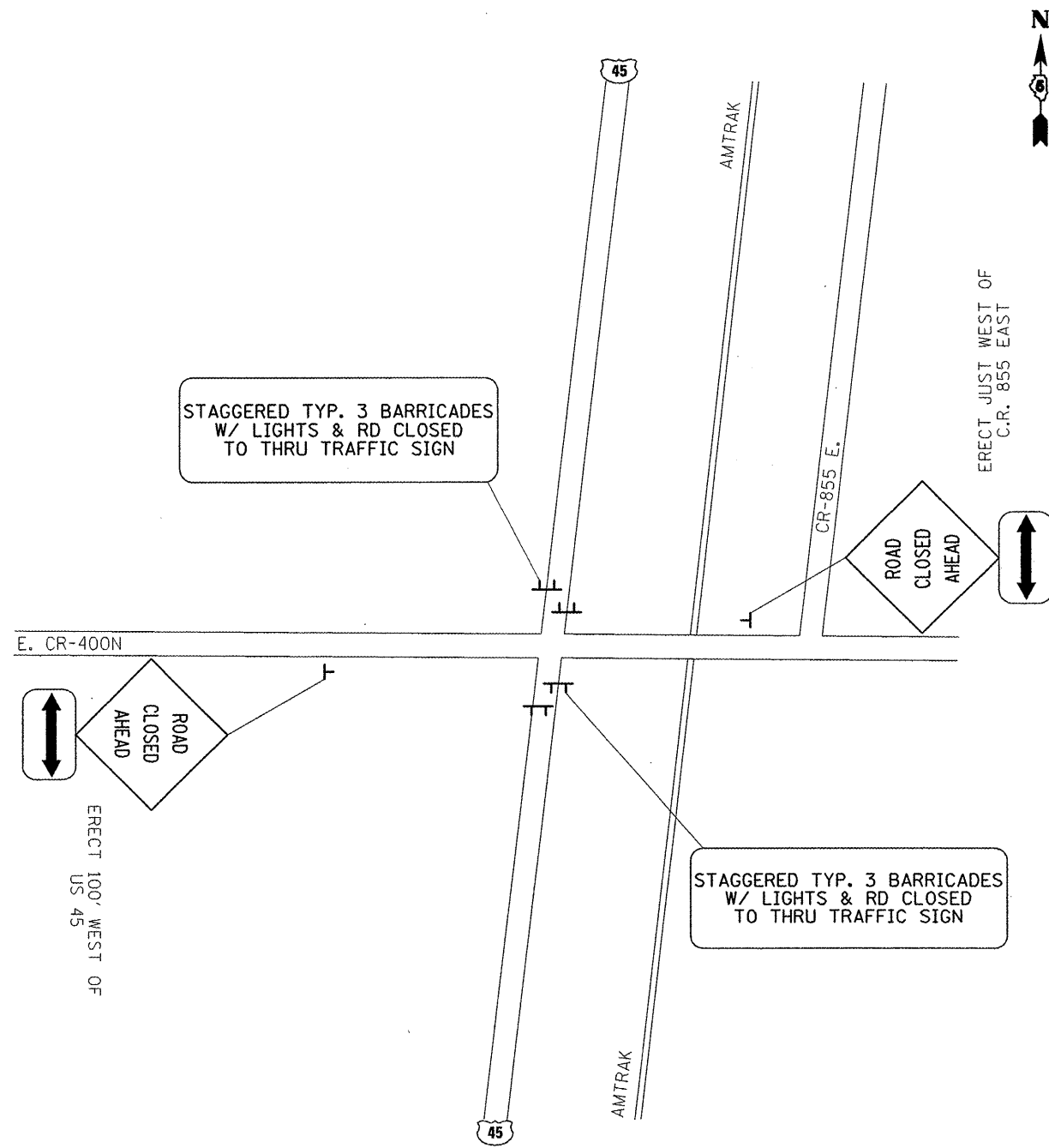


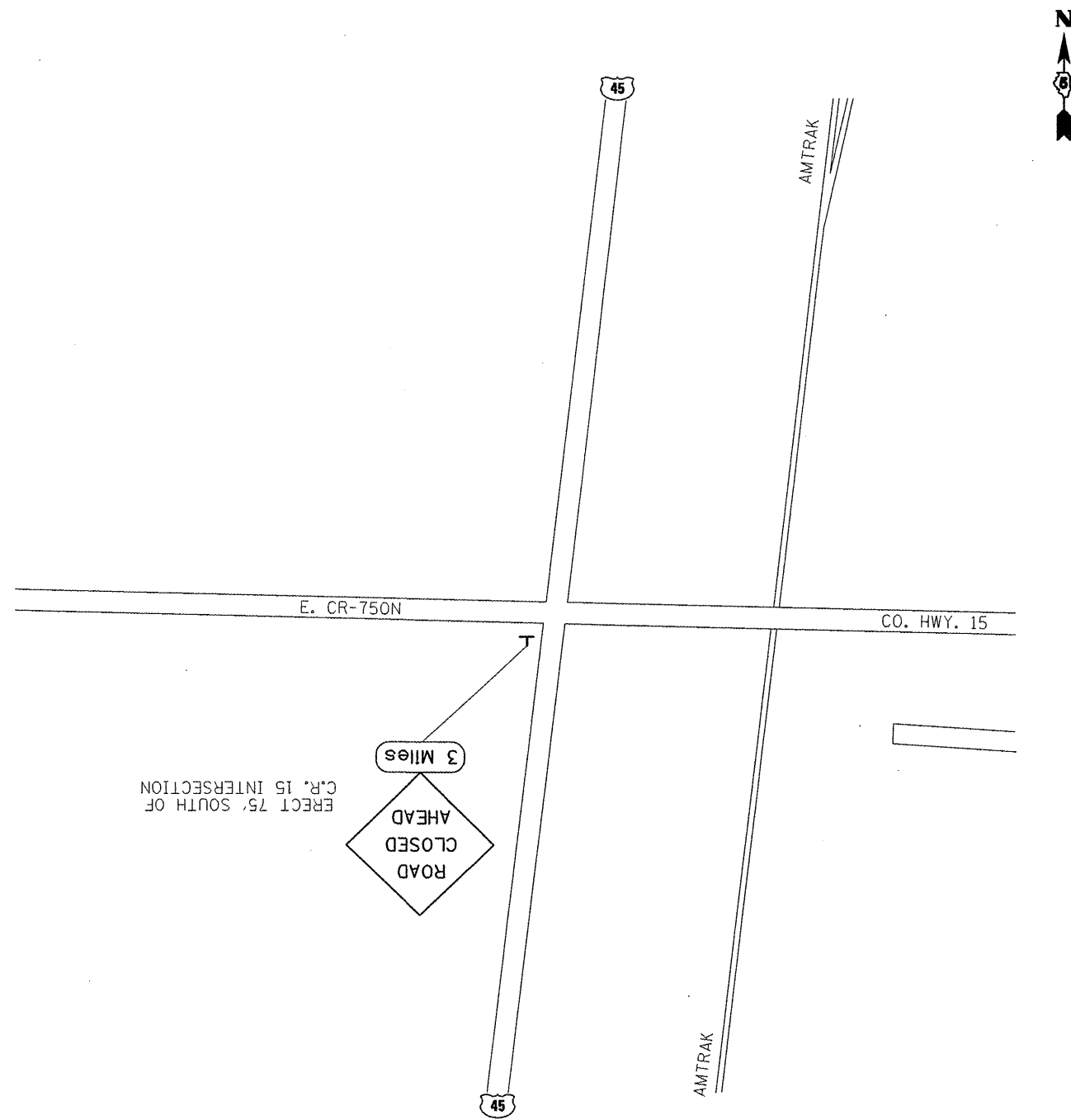
ROAD CLOSURE DETOUR DETAIL

US 45 & E. CR-400N. INTERSECTION



NOTE: TRAFFIC CONTROL DETAILS NOT SHOWN SHALL CONFORM TO THE ROAD CLOSURE DETAIL SHOWN ON DISTRICT 5 DETAIL NO. 70200000, TRAFFIC CONTROL & PROTECTION DEVICES (ROAD & SIDEROAD/STREET CLOSURES), INCLUDED ON PLAN SHEET NO. 12 OF 16.

US 45 & CO. RD. 15 INTERSECTION



Note: All dimensions are in INCHES (millimeters) unless otherwise shown.
 *FY 2010 POSTING MITIGATION

FILE NAME =	USER NAME = coombessf	DESIGNED -	REVISED -
cr\pw_work\FWID01\C00MBESSF\0180209\05	70814-sht-details.dgn	DRAWN -	REVISED -
	PLOT SCALE = 40,0000' / IN.	CHECKED -	REVISED -
	PLOT DATE = 1/28/2010	DATE -	REVISED -

STATE OF ILLINOIS
DEPARTMENT OF TRANSPORTATION

ROAD CLOSURE DETOUR DETAIL			
SCALE:	SHEET NO.	OF SHEETS	STA. TO STA.

F.A.S. RTE.	SECTION	COUNTY	TOTAL SHEETS	SHEET NO.
1671	*	DOUGLAS	16	11
CONTRACT NO. 70814				
ILLINOIS FED. AID PROJECT				