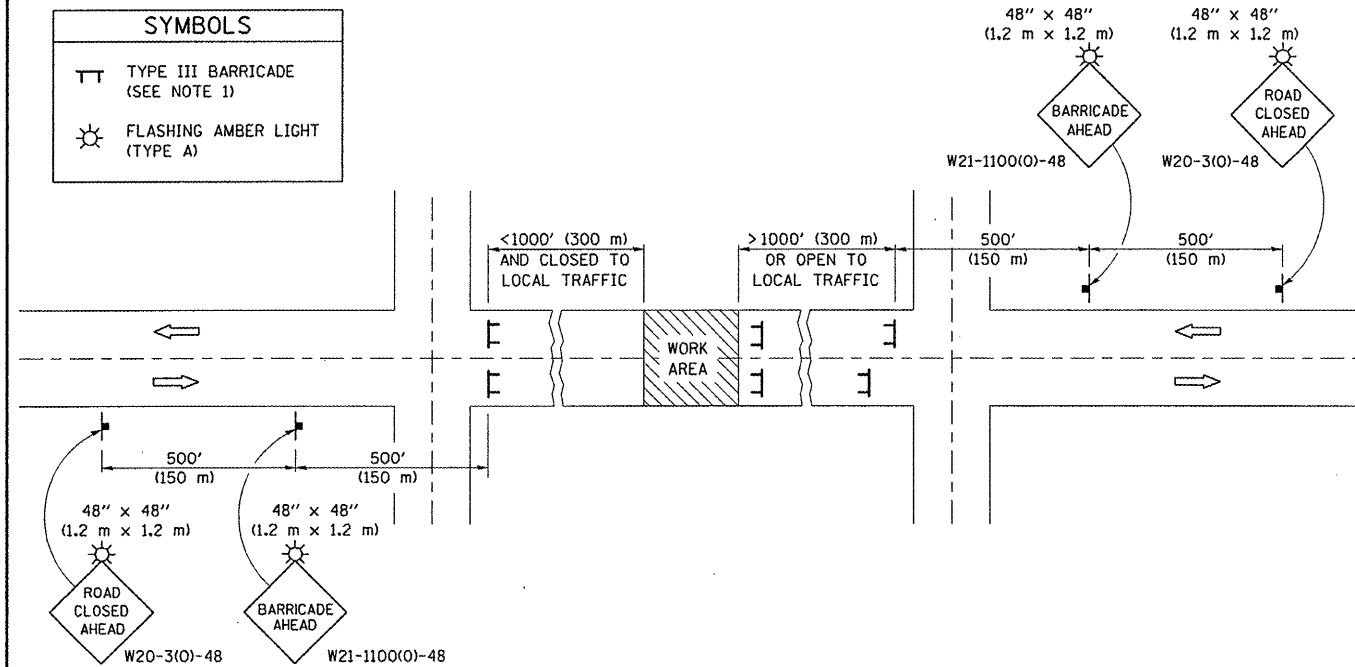


# ROAD CLOSURE

# SIDEROAD / STREET CLOSURE

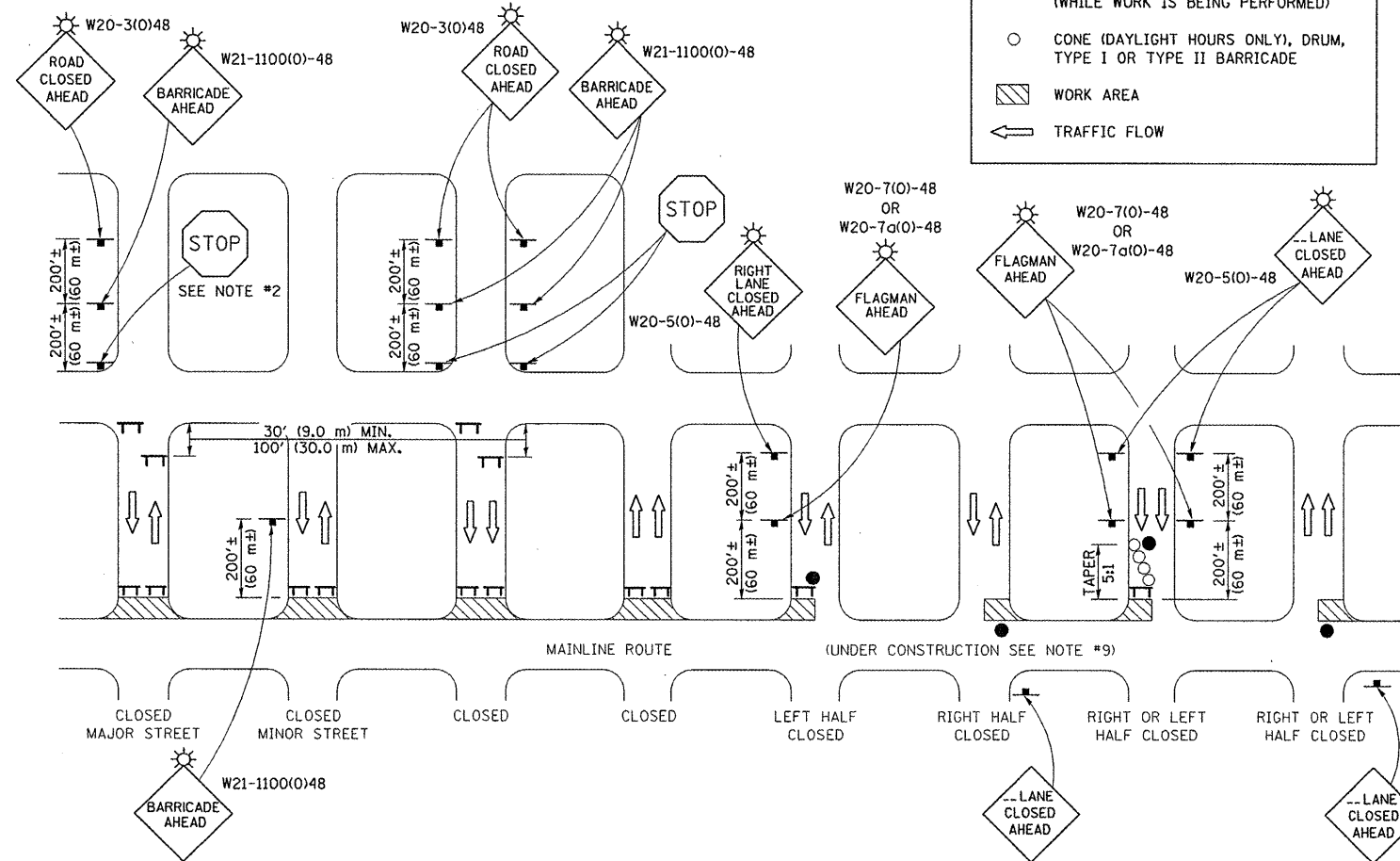
| SYMBOLS |                                 |
|---------|---------------------------------|
|         | TYPE III BARRICADE (SEE NOTE 1) |
|         | FLASHING AMBER LIGHT (TYPE A)   |



### GENERAL NOTES

- TYPE III BARRICADES SHALL BE AS SHOWN ON STANDARD 701901 "TYPICAL APPLICATIONS OF TYPE III BARRICADES CLOSING A ROAD". EACH TYPE III BARRICADE SHALL HAVE TWO FLASHING AMBER LIGHTS MOUNTED ABOVE IT.
- IF THE ROAD IS OPEN TO LOCAL TRAFFIC OR EXCEEDS 1000' (300 m), ANOTHER SET OF TYPE III BARRICADES, EQUIPPED AS IN NOTE 1 ABOVE, SHALL BE PLACED AT EACH END OF THE WORK AREA.
- WHEN A STOP CONDITION EXISTS, NO SIGNS ARE REQUIRED IN ADVANCE OF THE "STOP" SIGN WHEN THE ROAD IS CLOSED WITHIN 100' (30 m) OF THE INTERSECTION.
- STANDARD 701901 SHALL APPLY FOR THE PLACEMENT & DESIGN OF TYPE III BARRICADES.
- IF A TYPE III BARRICADE WITH AN ATTACHED SIGN PANEL WHICH MEETS NCHRP 350 IS NOT AVAILABLE, THE SIGNS MAY BE MOUNTED ON AN NCHRP 350 TEMPORARY SIGN SUPPORT DIRECTLY IN FRONT OF THE BARRICADE.
- REFLECTORIZED STRIPING SHALL APPEAR ON BOTH SIDES OF THE TYPE III BARRICADES IF ROAD IS OPEN TO LOCAL TRAFFIC.
- ALL SIGNS SHALL BE POST MOUNTED IF THE CLOSURE TIME EXCEEDS FOUR DAYS.
- A MINIMUM OF TWO FLASHING LIGHTS SHALL BE USED AT NIGHT ON EACH APPROACH IN ADVANCE OF THE WORK AREA. FLASHING LIGHTS SHALL BE INSTALLED ABOVE THE FIRST TWO SIGNS IN THE SERIES.
- LONGITUDINAL DIMENSIONS MAY BE ADJUSTED SLIGHTLY TO FIT FIELD CONDITIONS.
- FORMS BT. 725 AND BT. 726 ARE REQUIRED.
- WHEN A SIDEROAD INTERSECTS THE HIGHWAY ON WHICH WORK IS BEING PERFORMED, ADDITIONAL TRAFFIC DEVICES SHALL BE ERECTED AND PROVIDED AS DIRECTED BY THE ENGINEER.
- AN ADDITIONAL SIGN MAY BE REQUIRED AT A MAJOR INTERSECTING ROAD IN ADVANCE OF THE CLOSURE. THE ADDITIONAL SIGN SHALL GIVE THE DISTANCE TO THE BARRICADE IN MILES OR FRACTIONS OF A MILE.

| SYMBOLS |   |
|---------|---|
|         | TYPE III BARRICADE (SEE NOTE)                                     |
|         | FLASHING LIGHT  |
|         | FLAGGER WITH TRAFFIC CONTROL SIGN (WHILE WORK IS BEING PERFORMED) |
|         | CONE (DAYLIGHT HOURS ONLY), DRUM, TYPE I OR TYPE II BARRICADE     |
|         | WORK AREA   |
|         | TRAFFIC FLOW  |



### GENERAL NOTES

- TYPE III BARRICADES SHALL BE AS SHOWN ON "TYPICAL APPLICATIONS OF TYPE III BARRICADES CLOSING A ROAD". EACH TYPE III BARRICADE SHALL HAVE TWO FLASHING AMBER LIGHTS MOUNTED ABOVE IT.
- WHERE A STOP CONDITION EXISTS, AS SHOWN ABOVE, WARNING SIGNS MAY BE OMITTED IN ADVANCE OF THE "STOP" SIGN.
- STANDARD 701901 SHALL APPLY FOR THE PLACEMENT & MANUFACTURE OF TYPE III BARRICADES.
- ALL SIGNS SHALL BE POST MOUNTED IF THE CLOSURE TIME EXCEEDS FOUR DAYS.
- ONE FLASHING LIGHT IS REQUIRED ABOVE EACH ADVANCE WARNING SIGN DURING HOURS OF DARKNESS.
- LONGITUDINAL DIMENSIONS MAY BE ADJUSTED SLIGHTLY TO FIT FIELD CONDITIONS.
- FORMS BT 725 AND BT 726 ARE REQUIRED.
- THE MAINLINE ROUTE TEMPORARY TRAFFIC CONTROL SHALL BE IN ACCORDANCE WITH THE PLANS, SPECIAL PROVISIONS AND STANDARD SPECIFICATIONS.
- ALL FLAGGERS REQUIRED AT SIDE ROADS AND ENTRANCES REMAINING OPEN TO TRAFFIC AND/OR ADDITIONAL BARRICADES REQUIRED BY THE ENGINEER TO CLOSE SIDE ROADS AND ENTRANCES WILL BE PAID FOR ACCORDING TO ARTICLE 109.04.

Note: All dimensions are in INCHES (millimeters) unless otherwise shown.

\*FY 2010 POSTING MITIGATION

### DISTRICT 5 DETAIL NO. 7020000

|   |  |            |                       |
|---|--|------------|-----------------------|
| FILE NAME =                                   | USER NAME = coombesf   | DESIGNED - | REVISED - 11/06       |
| c:\p\work\PWIDOT\COOMBESF\0180209\0180209.dwg | 70814-sht-details.dgn  | DRAWN -    | REVISED - 12/07       |
|   | PLOT SCALE = 48.0000 "/td> <td>CHECKED -</td> <td>REVISED - 09/09 - KJT</td> | CHECKED -  | REVISED - 09/09 - KJT |
|   | PLOT DATE = 1/27/2010  | DATE -     | REVISED -             |

STATE OF ILLINOIS  
DEPARTMENT OF TRANSPORTATION

| TRAFFIC CONTROL & PROTECTION DEVICES<br>(ROAD & SIDEROAD/STREET CLOSURES) |           |           |      |         |
|---|-----------|-----------|------|---------|
| SCALE:  | SHEET NO. | OF SHEETS | STA. | TO STA. |
|   |           |           |      |         |

| F.A.S. RTE.                                   | SECTION | COUNTY  | TOTAL SHEETS | SHEET NO. |
|---|---------|---------|--------------|-----------|
| 1671  | *       | DOUGLAS | 16           | 12        |
| CONTRACT NO. 70814                            |         |         |              |           |
| FED. ROAD DIST. NO. ILLINOIS FED. AID PROJECT |         |         |              |           |