

F.A.P. RTE.	SECTION	COUNTY	TOTAL SHEETS	SHEET NO.
317	(27,28)PT	MCLEAN	5	1
		ILLINOIS	CONTRACT NO. 70823	

STATE OF ILLINOIS
DEPARTMENT OF TRANSPORTATION
DIVISION OF HIGHWAYS

PROPOSED
HIGHWAY PLANS

F.A.P. ROUTE 317 (U.S. 24)
SECTION (27,28)PT

PATCHING
MCLEAN COUNTY

C-95-058-09

CHENOA TO LIVINGSTON CO. LINE

D-95-058-09



LOCATION OF SECTION INDICATED THUS: - [Black Box] -

FOR INDEX OF SHEETS, SEE SHEET NO. 2
FOR SUMMARY OF QUANTITIES, SEE SHEET NO. 3

CURRENT TRAFFIC DATA

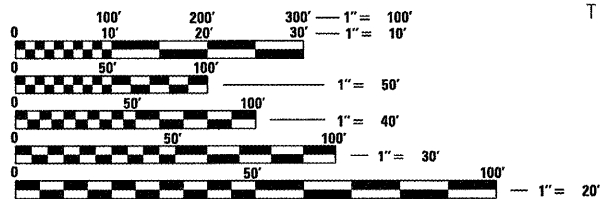
F.A.P. ROUTE 317 (U.S. 24)

	LEG A	LEG B
2009 ADT	4,550	5,100
PC%	81.2	82.5
SU%	6.1	6.5
MU%	12.7	11.0

LEG A - CHENOA TO WESTON
LEG B - WESTON TO END OF PROJECT

DESIGN DESIGNATION

N/A

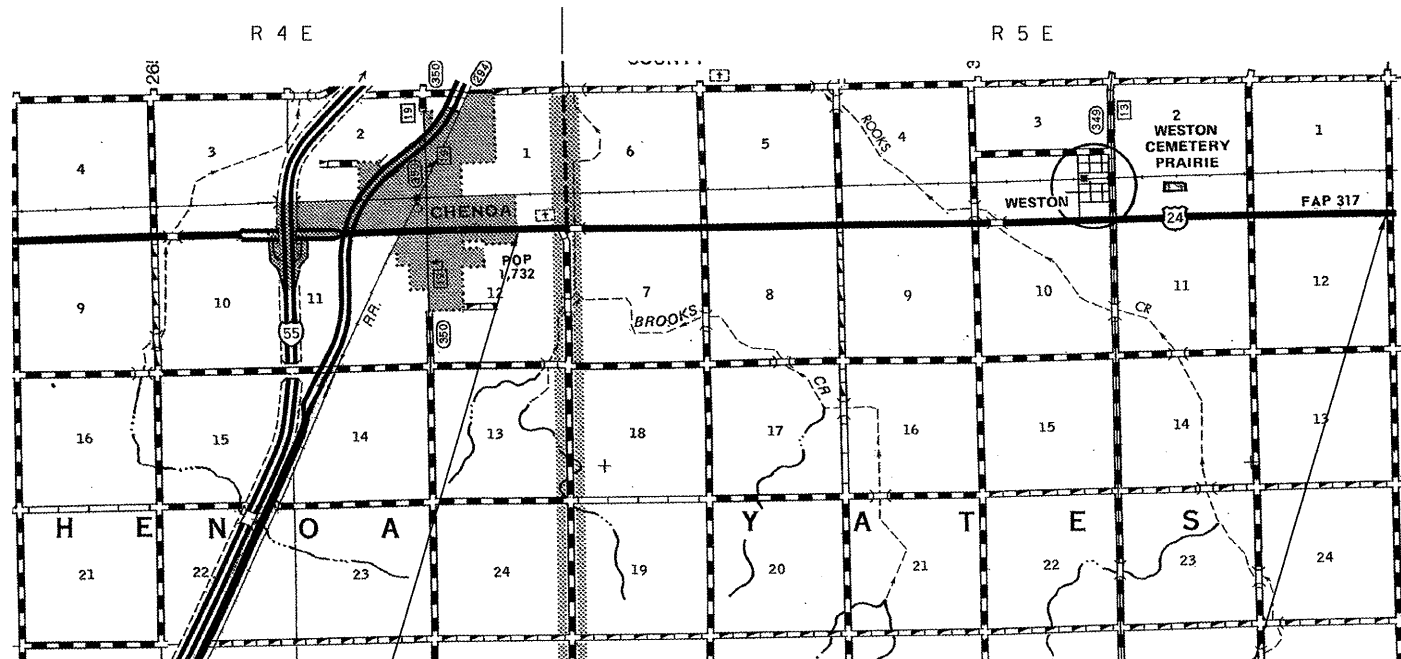


FULL SIZE PLANS HAVE BEEN PREPARED USING STANDARD ENGINEERING SCALES. REDUCED SIZED PLANS WILL NOT CONFORM TO STANDARD SCALES. IN MAKING MEASUREMENTS ON REDUCED PLANS, THE ABOVE SCALES MAY BE USED.

J.U.L.I.E.
JOINT UTILITY LOCATION INFORMATION FOR EXCAVATION
1-800-892-0123
OR 811

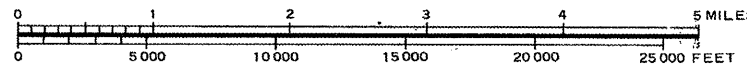
CHENOA, YATES TOWNSHIPS

PROJECT ENGINEER: JASON STULTS
DESIGNER: DAN O'DEAR
(217)465-4181
CONTRACT NO. 70823



SECTION (27,28)PT
BEGIN STATION 2+67.00

SECTION (27,28)PT
END STATION 363+00.00



GROSS LENGTH OF PROJECT = 36,033.00 FT. = 6.824 MILES
NET LENGTH OF PROJECT = 36,033.00 FT. = 6.824 MILES

STATE OF ILLINOIS
DEPARTMENT OF TRANSPORTATION
DIVISION OF HIGHWAYS

SUBMITTED 2/3 2010
Jason K. Bowen
DEPUTY DIRECTOR OF HIGHWAYS, REGION ENGINEER

March 9, 2010
Scott E. Stitt P.E. KS
ENGINEER OF DESIGN AND ENVIRONMENT

Christine M. Reed KS
DIRECTOR OF HIGHWAYS, CHIEF ENGINEER

PRINTED BY THE AUTHORITY
OF THE STATE OF ILLINOIS

INDEX OF SHEETS

SHEET NO.	ITEM
1	COVER SHEET
2	INDEX OF SHEETS
2	LIST OF STANDARDS
2	GENERAL NOTES
3	SUMMARY OF QUANTITIES
4	EXISTING TYPICAL CROSS SECTIONS
5	SCHEDULE OF QUANTITIES

LIST OF STANDARDS

STANDARD NUMBER	NAME OF STANDARD
000001-05	STANDARD SYMBOLS, ABBREVIATIONS AND PATTERNS
001001-02	AREAS OF REINFORCEMENT BARS
001006	DECIMAL OF AN INCH AND OF A FOOT
420001-07	PAVEMENT JOINTS
420701-02	PAVEMENT FABRIC
442101-07	CLASS B PATCHES
701001-02	OFF-ROAD OPERATIONS, 2L, 2W, MORE THAN 4.5 M (15') AWAY
701006-03	OFF-ROAD OPERATIONS, 2L, 2W, 4.5 M (15') TO 600 MM (24") FROM PAVEMENT EDGE
701201-03	LANE CLOSURE 2L, 2W, DAY ONLY, FOR SPEEDS ≥ 45 MPH
701311-03	LANE CLOSURE 2L, 2W, MOVING OPERATIONS-DAY ONLY
701901-01	TRAFFIC CONTROL DEVICES

GENERAL NOTES

G.N.-100
ENGLISH UNITS OF MEASUREMENT SHALL GOVERN OVER AND SUPERSEDE ANY METRIC UNITS SHOWN IN THIS CONTRACT. WHERE INCLUDED, METRIC UNITS ARE FOR INFORMATION ONLY.

G.N.-442B--PATCHING SCHEDULES
THE PATCHING SCHEDULES INCLUDED IN THE PLANS REPRESENT THE BEST INFORMATION AVAILABLE AT THE TIME OF COMPLETION OF THE PLANS FOR LETTING. VARIATIONS IN LOCATION AND SIZES OF BOTH FULL-DEPTH AND-PARTIAL DEPTH PATCHES MAY OCCUR.

G.N.-1004.01
COARSE AGGREGATE GRADATION CA-10 MAY BE USED WHENEVER COARSE AGGREGATE CA-6 IS SPECIFIED IN THE STANDARD SPECIFICATIONS.

COMMITMENTS:
NO COMMITMENTS FOR THIS CONTRACT

FILE NAME =	USER NAME = ceer-lockjd	DESIGNED - DWO	REVISED -	STATE OF ILLINOIS DEPARTMENT OF TRANSPORTATION	INDEX OF SHEETS, LIST OF STANDARDS & GENERAL NOTES	F.A.P. RTE.	SECTION	COUNTY	TOTAL SHEETS	SHEET NO.
c:\pw_work\FW1001\CEARLOCKJD\0182178\	570823-shr-gennote.dgn	DRAWN - BBP	REVISED -			317	(27,28)PT	MCLEAN	5	2
PLOT SCALE = 48.0000' / IN.	CHECKED -	REVISED -	SCALE: NONE SHEET NO. 1 OF 1 SHEETS STA. TO STA.							
PLOT DATE = 2/3/2010	DATE - 01/26/10	REVISED -	CONTRACT NO. 70823 ILLINOIS FED. AID PROJECT							

SUMMARY OF QUANTITIES

LOCATION OF WORK: FAP 317 (US 24)
 STA 2+67
 TO
 STA 363+00

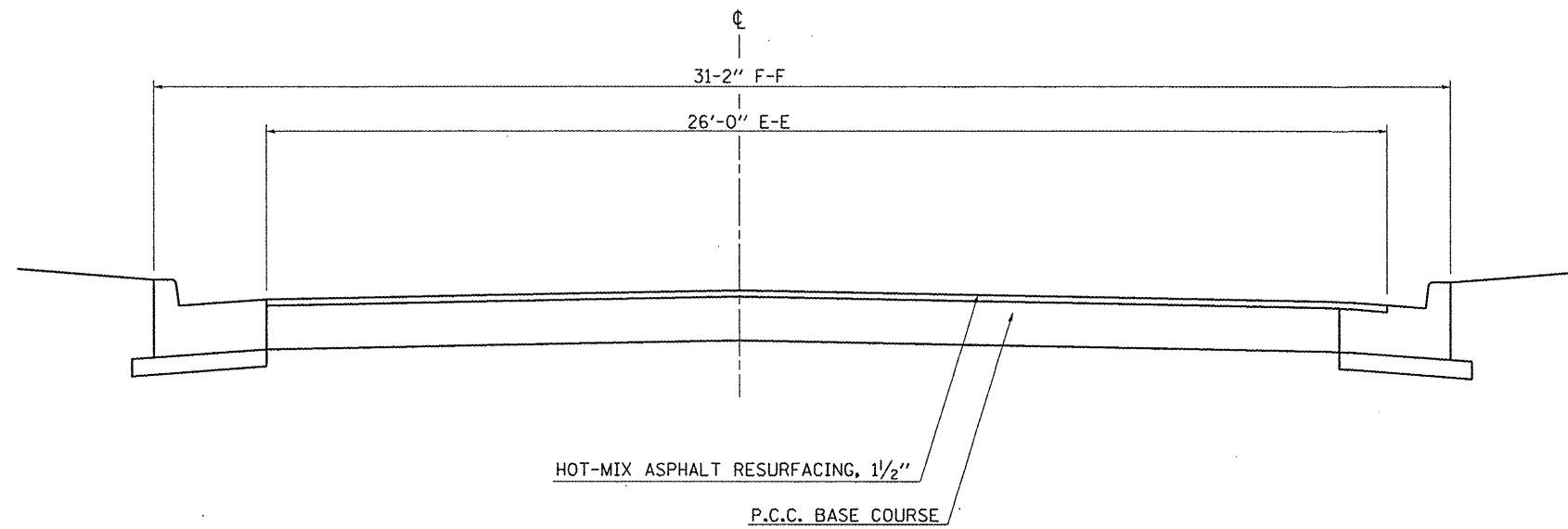
CONSTRUCTION TYPE CODE: MCLEAN CO
 100% STATE
 I000-2A
 TOTAL

<u>CODE NO</u>	<u>ITEM</u>	<u>UNIT</u>	<u>QUANTITY</u>
44201019	CLASS B PATCHES, TYPE II, 14 INCH	SQ YD	320.0
44201025	CLASS B PATCHES, TYPE IV, 14 INCH	SQ YD	200.0
44213100	PAVEMENT FABRIC	SQ YD	200.0
44213200	SAW CUTS	FOOT	1,932.0
67100100	MOBILIZATION	L SUM	1.0
70100450	TRAFFIC CONTROL AND PROTECTION, STANDARD 701201	L SUM	1.0
Z0017100	DOWEL BARS	EACH	1,014.0
Z0075300	TIE BARS	EACH	60.0

FILE NAME =	USER NAME = ceo-lockjd	DESIGNED - DWO	REVISED -	STATE OF ILLINOIS DEPARTMENT OF TRANSPORTATION	SUMMARY OF QUANTITIES			F.A.P. RTE.	SECTION	COUNTY	TOTAL SHEETS	SHEET NO.
c:\p\work\p\1001\CEARLOCKJD\0102170\0370823-sht-500.dgn		DRAWN - BBP	REVISED -					317	(27,28)PT	MCLEAN	5	3
PLOT SCALE = 40.0000' / IN.		CHECKED -	REVISED -		SCALE: NONE SHEET NO. 1 OF 1 SHEETS STA. TO STA.			CONTRACT NO. 70823				
PLOT DATE = 2/4/2010		DATE - 01/26/10	REVISED -		ILLINOIS FED. AID PROJECT							

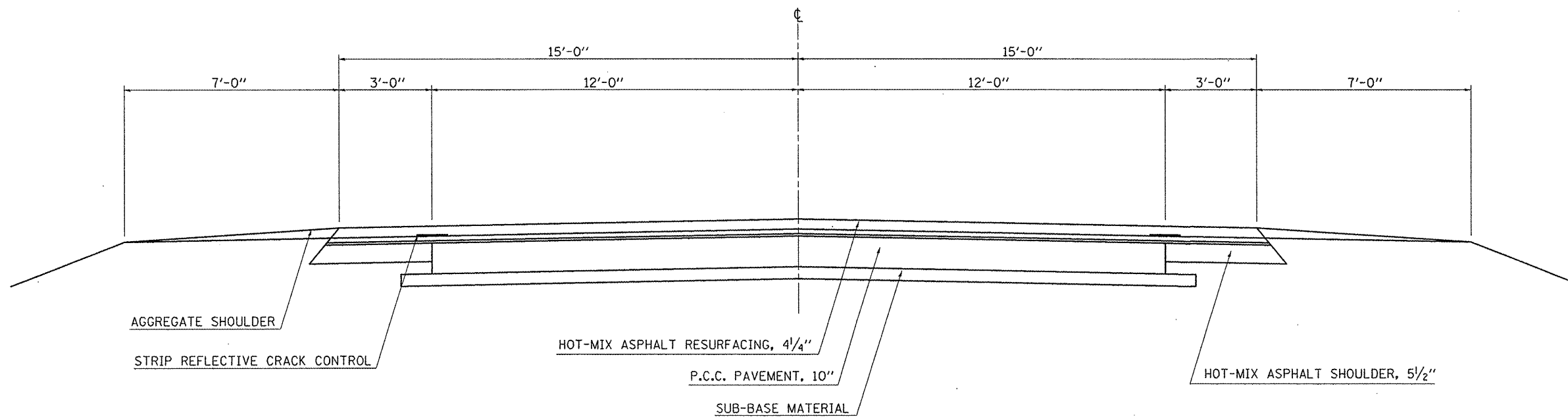
EXISTING TYPICAL CROSS SECTION

STATION TO STATION
2+62.00 16+97.00



EXISTING TYPICAL CROSS SECTION

STATION TO STATION
16+97.00 363+30.00



FILE NAME =	USER NAME = ceerlockjd	DESIGNED - DWO	REVISED -	STATE OF ILLINOIS DEPARTMENT OF TRANSPORTATION	EXISTING TYPICAL CROSS SECTIONS		F.A.P. RTE. =	SECTION	COUNTY	TOTAL SHEETS	SHEET NO.	
cc:\pwork\pwidot\ceerlockjd\0182178\570823-shr-typical.dgn		DRAWN - BBP	REVISED -		SCALE: NONE	SHEET NO. 1 OF 1 SHEETS	STA.	317	(27,28)PT	MCLEAN	5	4
		CHECKED -	REVISED -				TO STA.					
		DATE - 01/27/10	REVISED -									
							CONTRACT NO. 70823					
							ILLINOIS FED. AID PROJECT					

SCHEDULE OF QUANTITIES

PATCHING SCHEDULE

STATION	DIRECTION	LENGTH	WIDTH	PATCH AREA		DOWEL BARS	SAW CUTS	TIE BARS	PAVEMENT FABRIC
				TYPE II	TYPE IV				
				14	14				
				(sq. yd)	(sq. yd)	(each)	(ft)	(each)	(sq. yd)
27+38	EB	6	15	10.0	0.0	26	51.0	0	0.0
27+38	WB	6	15	10.0	0.0	26	51.0	0	0.0
39+80	WB	6	15	10.0	0.0	26	51.0	0	0.0
87+00	EB	6	15	10.0	0.0	26	51.0	0	0.0
87+00	WB	6	15	10.0	0.0	26	51.0	0	0.0
91+64	EB	6	15	10.0	0.0	26	51.0	0	0.0
91+64	WB	6	15	10.0	0.0	26	51.0	0	0.0
98+20	EB	6	15	10.0	0.0	26	51.0	0	0.0
98+20	WB	6	15	10.0	0.0	26	51.0	0	0.0
98+70	WB	6	15	10.0	0.0	26	51.0	0	0.0
105+83	EB	6	15	10.0	0.0	26	51.0	0	0.0
105+83	WB	6	15	10.0	0.0	26	51.0	0	0.0
106+87	WB	6	15	10.0	0.0	26	51.0	0	0.0
109+83	WB	6	15	10.0	0.0	26	51.0	0	0.0
110+55	EB	6	15	10.0	0.0	26	51.0	0	0.0
110+55	WB	6	15	10.0	0.0	26	51.0	0	0.0
110+85	EB	6	15	10.0	0.0	26	51.0	0	0.0
111+45	EB	6	15	10.0	0.0	26	51.0	0	0.0
111+45	WB	6	15	10.0	0.0	26	51.0	0	0.0
132+93	EB	6	15	10.0	0.0	26	51.0	0	0.0
132+93	WB	6	15	10.0	0.0	26	51.0	0	0.0
157+58	EB	40	15	0.0	66.7	52	85.0	20	66.7
157+58	WB	40	15	0.0	66.7	52	85.0	20	66.7
195+00	EB	6	15	10.0	0.0	26	51.0	0	0.0
195+00	WB	6	15	10.0	0.0	26	51.0	0	0.0
203+40	EB	20	15	0.0	33.3	39	65.0	10	33.3
203+40	WB	20	15	0.0	33.3	39	65.0	10	33.3
205+50	EB	6	15	10.0	0.0	26	51.0	0	0.0
205+50	WB	6	15	10.0	0.0	26	51.0	0	0.0
302+80	WB	6	15	10.0	0.0	26	51.0	0	0.0
316+80	EB	6	15	10.0	0.0	26	51.0	0	0.0
316+80	WB	6	15	10.0	0.0	26	51.0	0	0.0
360+90	WB	6	15	10.0	0.0	26	51.0	0	0.0
361+20	EB	6	15	10.0	0.0	26	51.0	0	0.0
361+60	EB	6	15	10.0	0.0	26	51.0	0	0.0
361+60	WB	6	15	10.0	0.0	26	51.0	0	0.0
FINAL TOTAL =				320.0	200.0	1,014	1932.0	60	200.0
USE =				(sq. yd)	(sq. yd)	(each)	(ft)	(each)	(sq. yd)
USE =				320.0	200.0	1,014	1932.0	60	200.0

FILE NAME =	USER NAME = ceerlockjd	DESIGNED - DWO	REVISED -	STATE OF ILLINOIS DEPARTMENT OF TRANSPORTATION	SCHEDULE OF QUANTITIES			F.A.P. RTE.	SECTION	COUNTY	TOTAL SHEETS	SHEET NO.
cd\pwork\PWIDOT\CEARLOCKJD\0182178\0570823-sht-schedule.dgn		DRAWN - BBP	REVISED -		SCALE: NONE	SHEET NO. 1 OF 1 SHEETS	STA.	317	(27,28)PT	MCLEAN	5	5
		CHECKED -	REVISED -				TO STA.	CONTRACT NO. 70823				
		DATE - 01/26/10	REVISED -		ILLINOIS FED. AID PROJECT							