

STATE OF ILLINOIS
DEPARTMENT OF TRANSPORTATION
DIVISION OF HIGHWAYS

**PROPOSED
HIGHWAY PLANS**

FAS ROUTE 533 (MARKET ST.)
SECTION 106PT

PAVEMENT PATCHING
CHAMPAIGN COUNTY

FORD HARRIS RD. TO I-57

C-95-059-09

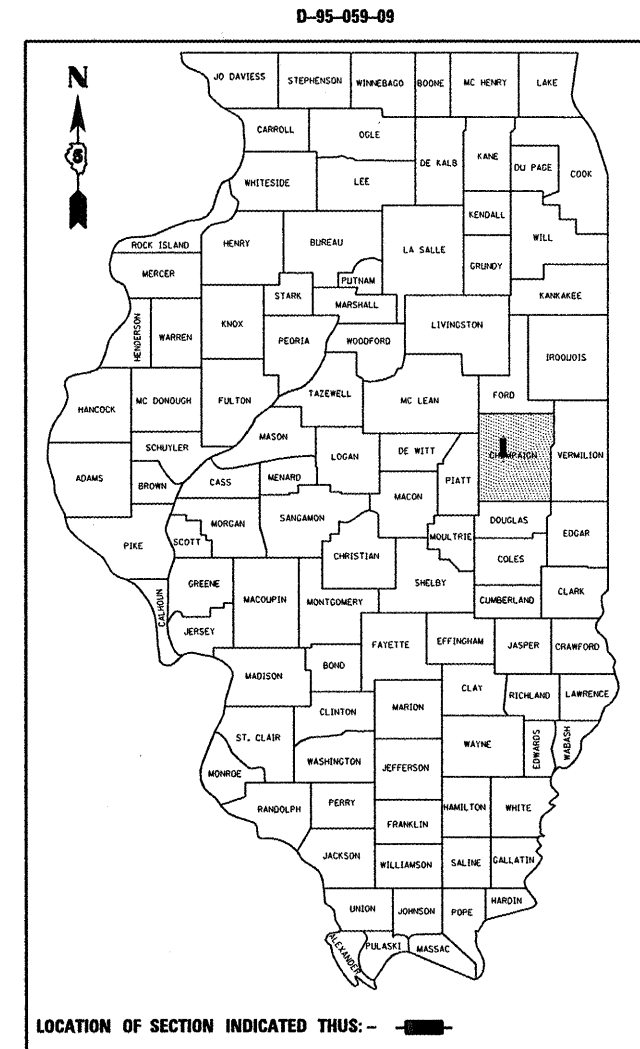
F.A.S. RTE.	SECTION	COUNTY	TOTAL SHEETS	SHEET NO.
533	106PT	CHAMPAIGN	7	1
		ILLINOIS	CONTRACT NO. 70824	

FOR INDEX OF SHEETS, SEE SHEET NO. 2

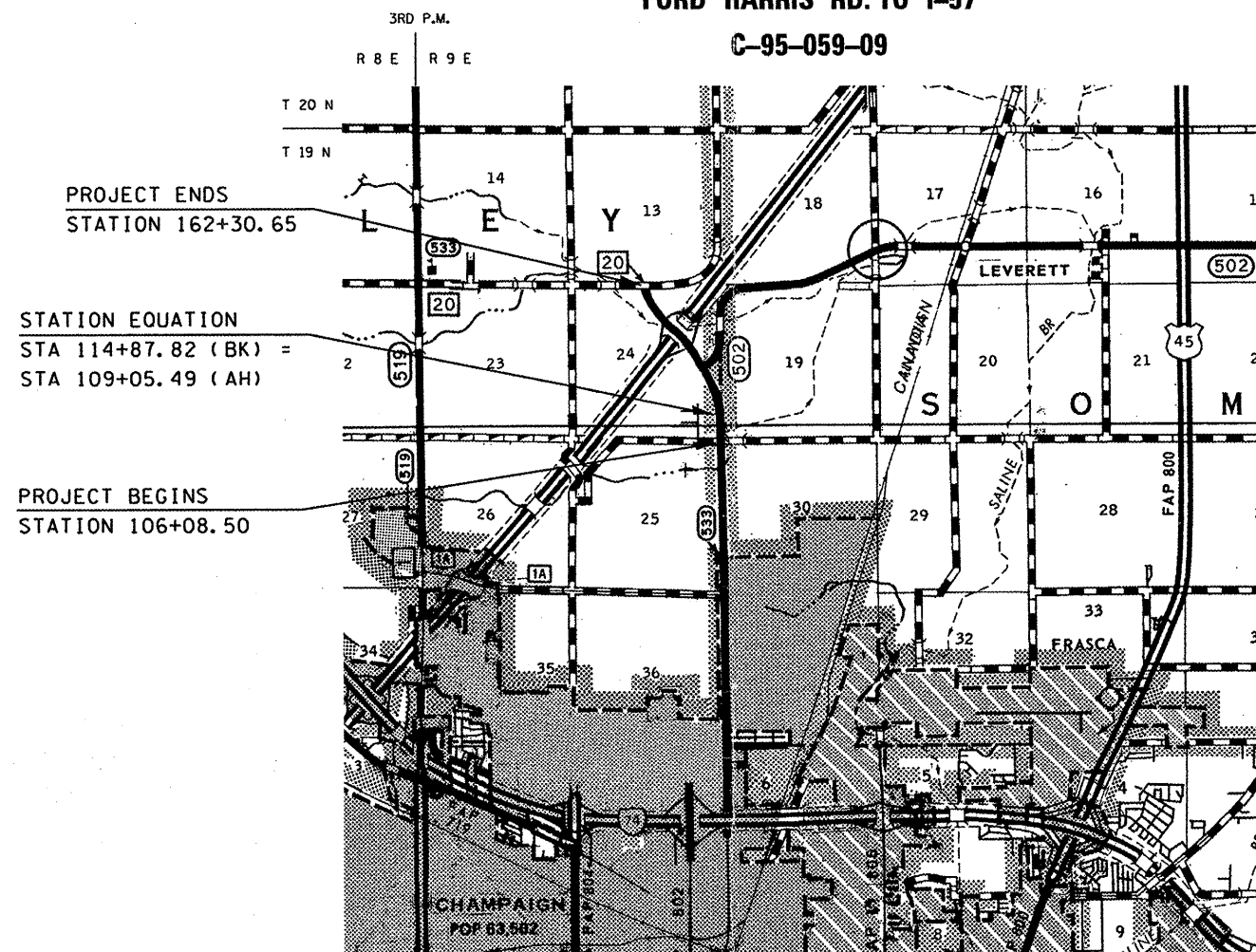
CURRENT ADT = 8200 (2006)

DESIGN DESIGNATION

MAJOR COLLECTOR



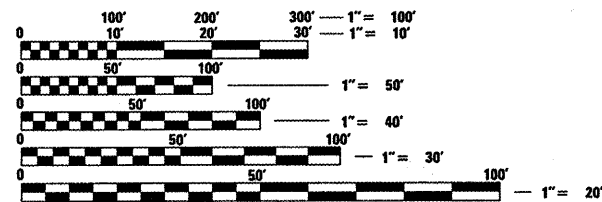
LOCATION OF SECTION INDICATED THUS: - ■ -



PROJECT ENDS
STATION 162+30.65

STATION EQUATION
STA 114+87.82 (BK) =
STA 109+05.49 (AH)

PROJECT BEGINS
STATION 106+08.50



FULL SIZE PLANS HAVE BEEN PREPARED USING STANDARD ENGINEERING SCALES. REDUCED SIZED PLANS WILL NOT CONFORM TO STANDARD SCALES. IN MAKING MEASUREMENTS ON REDUCED PLANS, THE ABOVE SCALES MAY BE USED.

J.U.L.I.E.
JOINT UTILITY LOCATION INFORMATION FOR EXCAVATION
1-800-892-0123
OR 811 HENSLEY TOWNSHIP (CHAMPAIGN CO.)

PROJECT ENGINEER: JASON STULTS
PROJECT MANAGER: RUSTIN KEYS
DESIGNER: JASON SMITH
CONTRACT NO. 70824

GROSS LENGTH = 6,204.48 FT. = 1.18 MILE
NET LENGTH = 6,204.48 FT. = 1.18 MILE

STATE OF ILLINOIS
DEPARTMENT OF TRANSPORTATION
DIVISION OF HIGHWAYS

SUBMITTED 1/29 20 10
Jonell E. Aouf
DEPUTY DIRECTOR OF HIGHWAYS, REGION ENGINEER

March 19, 20 10
Scott E. Stett, P.E.
Acting ENGINEER OF DESIGN AND ENVIRONMENT

March 19, 20 10
Christine M. Reed
DIRECTOR OF HIGHWAYS, CHIEF ENGINEER

PRINTED BY THE AUTHORITY
OF THE STATE OF ILLINOIS

INDEX OF SHEETS

SHEET NO.	DESCRIPTION
1	COVER SHEET
2	INDEX OF SHEETS & LIST OF STANDARDS
2	GENERAL NOTES
3	SUMMARY OF QUANTITIES
4-5	EXISTING TYPICAL CROSS SECTIONS
6-7	SCHEDULE OF QUANTITIES

LIST OF STANDARDS

STANDARD NO.	DESCRIPTION
000001-05	STANDARD SYMBOLS, ABBREVIATIONS AND PATTERNS
001001-02	AREAS OF REINFORCEMENT BARS
001006	DECIMAL OF AN INCH AND OF A FOOT
420001-07	PAVEMENT JOINTS
420701-02	PAVEMENT FABRIC
442101-07	CLASS B PATCHES
701001-02	OFF-ROAD OPERATIONS, 2L, 2W, MORE THAN 4.5 (15') AWAY
701006-03	OFF-ROAD OPERATIONS, 2L, 2W, 4.5 M (15') TO 600 MM (24") FROM PAVEMENT EDGE
701201-03	LANE CLOSURE, 2L, 2W, DAY ONLY, FOR SPEEDS >= 45 M.P.H.
701901-01	TRAFFIC CONTROL DEVICES

GENERAL NOTES

GENERAL NOTES

G.N. - 100
ENGLISH UNITS OF MEASUREMENT SHALL GOVERN OVER AND SUPERSEDE ANY METRIC UNITS SHOWN IN THIS CONTRACT. WHERE INCLUDED, METRIC UNITS ARE FOR INFORMATION ONLY.

G.N.-440B
THE EXISTING TIE BARS BETWEEN THE EXISTING PAVEMENT AND EXISTING MEDIANS, GUTTERS AND/OR COMBINATION CURB AND GUTTERS THAT ARE FOUND SUITABLE FOR REUSE SHALL BE CLEANED, STRAIGHTENED AND INCORPORATED INTO THE NEW CONSTRUCTION. ANY EXISTING TIE BARS THAT ARE FOUND UNSUITABLE TO BE INCORPORATED INTO THE PROPOSED CONSTRUCTION DUE TO EXCESSIVE RUSTING OR DISTRESS SHALL BE REMOVED FLUSH WITH THE FACE OF THE EXISTING CONCRETE AND DISPOSED OF OUTSIDE THE LIMITS OF THE RIGHT-OF-WAY IN ACCORDANCE WITH ARTICLE 202.03 OF THE STANDARD SPECIFICATIONS.

THIS WORK WILL NOT BE PAID FOR SEPARATELY BUT SHALL BE CONSIDERED INCLUDED IN THE VARIOUS REMOVAL PAY ITEMS AND NO ADDITIONAL COMPENSATION WILL BE ALLOWED.

G.N.-442B - PATCHING SCHEDULES
THE PATCHING SCHEDULES INCLUDED IN THE PLANS REPRESENT THE BEST INFORMATION AVAILABLE AT THE TIME OF COMPLETION OF THE PLANS FOR LETTING. VARIATIONS IN LOCATION AND SIZES OF BOTH FULL-DEPTH AND PARTIAL-DEPTH PATCHES MAY OCCUR.

G.N. - 442(SPL)
IT IS NOT THE INTENT OF THE DISTRICT TO DISTURB ANY DETECTOR LOOPS WITHIN THE PROPOSED SECTION. IF AN EXISTING DETECTOR LOOP IS IN CONFLICT WITH A PROPOSED PATCH LOCATION, THAT LOCATION SHALL BE DELETED FROM THE PLANS OR MOVED TO NOT INTERFERE WITH THE EXISTING DETECTOR LOOP.

G.N.-1004.01
COARSE AGGREGATE GRADATION CA-10 MAY BE USED WHENEVER COARSE AGGREGATE CA-6 IS SPECIFIED IN THE STANDARD SPECIFICATIONS.

FILE NAME =	USER NAME = keyarb	DESIGNED -	REVISED -	STATE OF ILLINOIS DEPARTMENT OF TRANSPORTATION	INDEX OF SHEETS, LIST OF STANDARDS, AND GENERAL NOTES	F.A.S. RTE.	SECTION	COUNTY	TOTAL SHEETS	SHEET NO.
c:\pw_work\pwsdot\keyarb\d0170439\0570824\sh1-Gennote.dgn	4-sh1-Gennote.dgn	DRAWN -	REVISED -			533	106PT	CHAMPAIGN	7	2
PLOT SCALE = 40,0000' / IN.	PLOT DATE = 2/3/2010	CHECKED -	REVISED -		SCALE:	FED. ROAD DIST. NO.		ILLINOIS FED. AID PROJECT		CONTRACT NO. 70824
		DATE	REVISED -		SHEET NO.	OF	SHEETS	STA.	TO	STA.

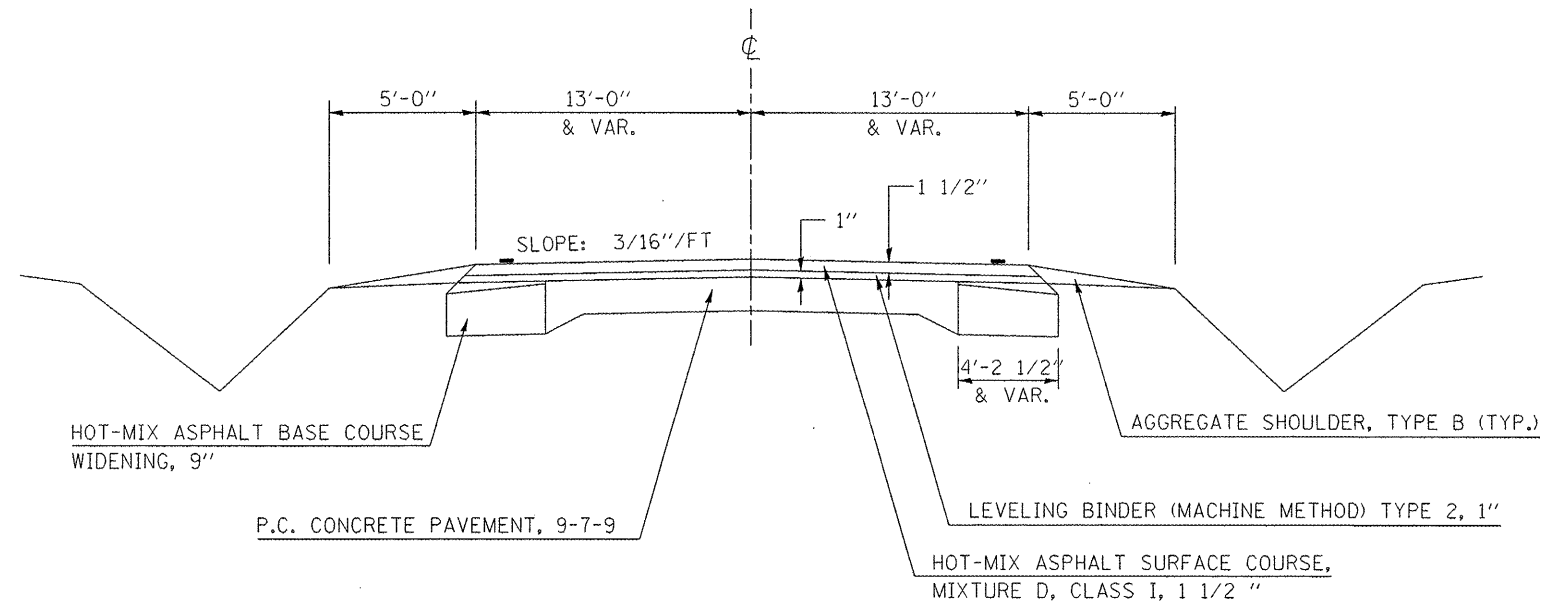
SUMMARY OF QUANTITIES

CODE NUMBER	PAY ITEM	UNIT	TOTAL
42001200	PAVEMENT FABRIC	SQ YD	423
44200994	CLASS B PATCHES, TYPE II, 12INCH	SQ YD	361
44200998	CLASS B PATCHES, TYPE III, 12INCH	SQ YD	264
44201000	CLASS B PATCHES, TYPE IV, 12INCH	SQ YD	159
44213200	SAW CUTS	FOOT	2844
67100100	MOBILIZATION	L SUM	1
70100450	TRAFFIC CONTROL AND PROTECTION, STANDARD 701201	L SUM	1
Z0017100	DOWEL BARS	EACH	1309
Z0075300	TIE BARS	EACH	55

FAS 533 (MARKET ST)
 STA. 106+08.50 TO
 STA 162+30.65
 CHAMPAIGN COUNTY
 RURAL
 100% STATE
 I000

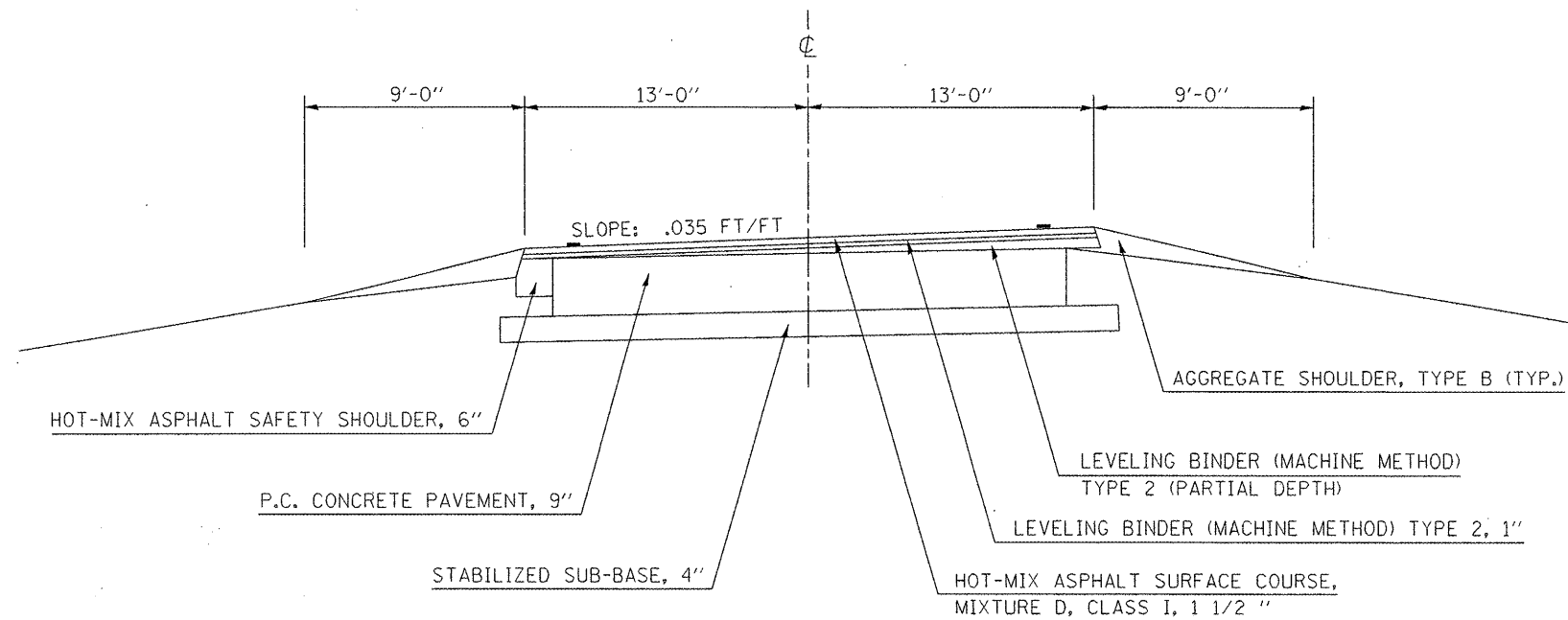
1 EXISTING TYPICAL SECTION FAS 533

STATION TO STATION
106+08.50 113+86.00



2 EXISTING TYPICAL SECTION FAS 533

STATION TO STATION
113+86.00 114+87.82(BK)
109+05.49(AH) 133+78.69



FILE NAME =	USER NAME = keysrb	DESIGNED -	REVISED -
cs:\pw_work\PH1001\KEYSRB\0178439\0578	24-sht-typical.dgn	DRAWN -	REVISED -
	PLOT SCALE = 48.0000' / IN.	CHECKED -	REVISED -
	PLOT DATE = 2/3/2010	DATE -	REVISED -

STATE OF ILLINOIS
DEPARTMENT OF TRANSPORTATION

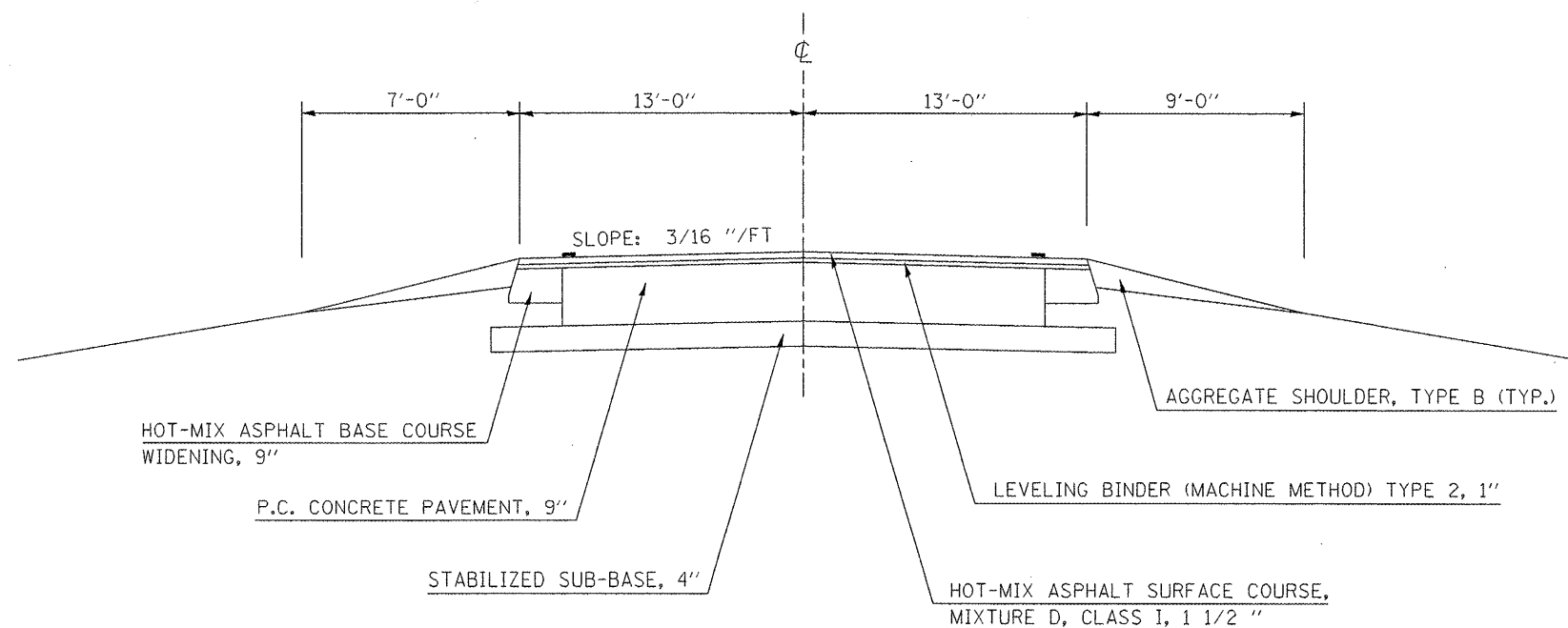
EXISTING TYPICAL SECTION

SCALE: SHEET NO. OF SHEETS STA. TO STA.

F.A.S. RTE.	SECTION	COUNTY	TOTAL SHEETS	SHEET NO.
533	160PT	CHAMPAIGN	7	4
CONTRACT NO. 70824				
ILLINOIS FED. AID PROJECT				

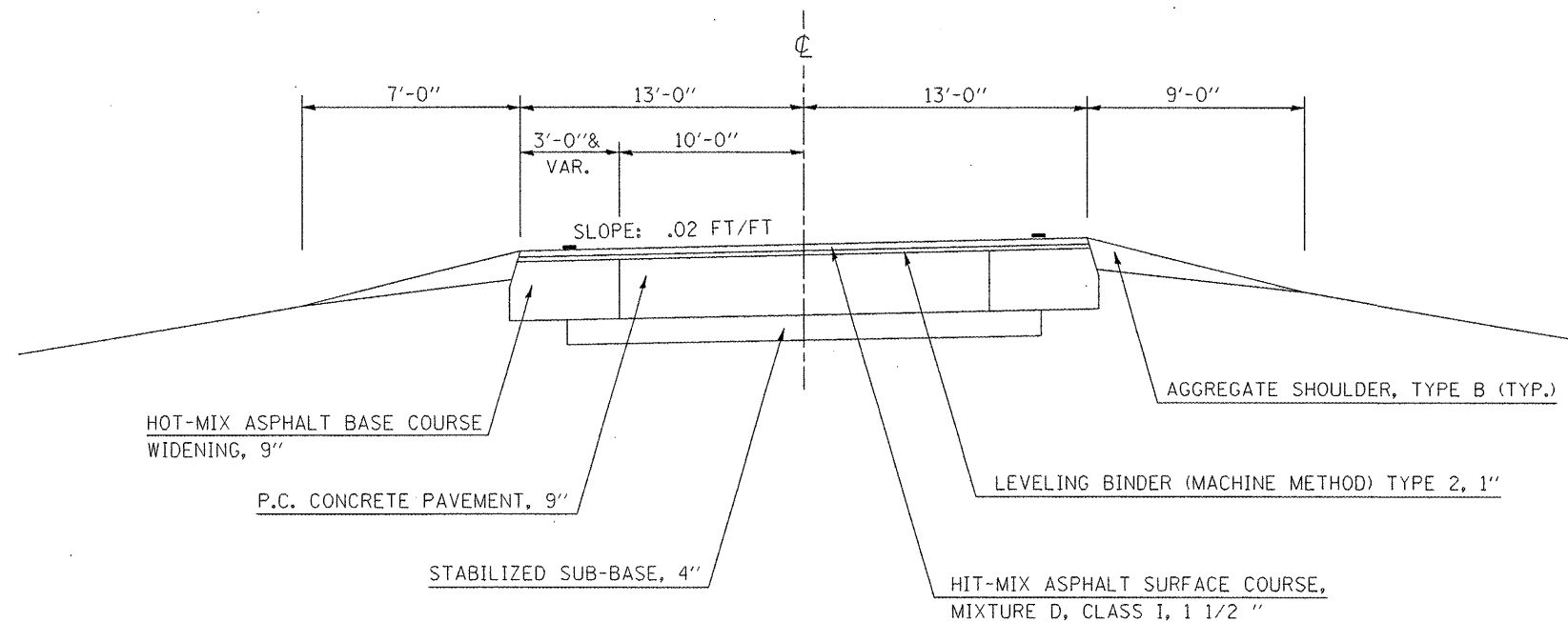
③ EXISTING TYPICAL SECTION FAS 533

STATION TO STATION
133+78.69 148+78.20



④ EXISTING TYPICAL SECTION FAS 533

STATION TO STATION
148+78.20 162+30.65



FILE NAME =	USER NAME = keyarb	DESIGNED -	REVISED -	STATE OF ILLINOIS DEPARTMENT OF TRANSPORTATION	EXISTING TYPICAL SECTION			F.A.S. RTE.	SECTION	COUNTY	TOTAL SHEETS	SHEET NO.
ct:\pw\work\PWIDOT\KEYSRB\0178439\0570824-sht-typical.dgn	PLOT SCALE = 40.0000 / / IN.	DRAWN -	REVISED -					533	160PT	CHAMPAIGN	7	5
PLOT DATE = 2/3/2010	DATE -	CHECKED -	REVISED -		SCALE: SHEET NO. OF SHEETS STA. TO STA.			CONTRACT NO. 70824				
					ILLINOIS FED. AID PROJECT							

SCHEDULE OF QUANTITIES

STATION	OFFSET DIR.	LENGTH	WIDTH	PATCH AREA				DOWEL BARS Z0017100 (each)	SAW CUTS 44213200 (ft)	TIE BARS Z0075300 (each)	PAVEMENT FABRIC 44213100 (sq. yd)
				TYPE I 12.0" (sq. yd)	TYPE II 12.0" (sq. yd)	TYPE III 12.0" (sq. yd)	TYPE IV 12.0" (sq. yd)				
106+87.50	RT	6	13	0	9	0	0	22	45	0	0
106+87.50	LT	6	13	0	9	0	0	22	45	0	0
107+07.50	RT	6	13	0	9	0	0	22	45	0	0
107+37.50	RT	6	13	0	9	0	0	22	45	0	0
107+37.50	LT	6	13	0	9	0	0	22	45	0	0
108+15.50	RT	6	13	0	9	0	0	22	45	0	0
108+88.50	RT	6	13	0	9	0	0	22	45	0	0
108+88.50	LT	6	13	0	9	0	0	22	45	0	0
109+88.50	RT	6	13	0	9	0	0	22	45	0	0
109+88.50	LT	6	13	0	9	0	0	22	45	0	0
111+72.50	RT	6	13	0	9	0	0	22	45	0	0
111+72.50	LT	6	13	0	9	0	0	22	45	0	0
113+91.50	RT	6	13	0	9	0	0	22	45	0	0
113+91.50	LT	6	13	0	9	0	0	22	45	0	0
114+49.50	RT	6	13	0	9	0	0	22	45	0	0
114+49.50	LT	6	13	0	9	0	0	22	45	0	0
111+04.17	RT	6	13	0	9	0	0	22	45	0	0
111+04.17	LT	15	13	0	0	22	0	22	54	0	22
115+11.17	RT	6	13	0	9	0	0	22	45	0	0
115+11.17	LT	6	13	0	9	0	0	22	45	0	0
117+08.17	LT	20	13	0	0	0	29	22	59	10	29
118+12.17	LT	6	13	0	9	0	0	22	45	0	0
118+12.17	RT	6	13	0	9	0	0	22	45	0	0
121+15.17	LT	12	13	0	0	17	0	22	51	0	17
122+12.17	LT	10	13	0	14	0	0	22	49	0	0
123+17.17	LT	20	13	0	0	0	29	22	59	10	29
124+16.17	LT	6	13	0	9	0	0	22	45	0	0
125+14.17	LT	8	13	0	12	0	0	22	47	0	0
125+14.17	RT	6	13	0	9	0	0	22	45	0	0
SUB TOTALS				0	225	39	58	638	1354	20	97
				(sq. yd)	(sq. yd)	(sq. yd)	(sq. yd)	(each)	(ft)	(each)	(sq. yd)

SCHEDULE OF QUANTITIES

STATION	OFFSET DIR.	LENGTH (ft)	WIDTH (ft)	PATCH AREA				DOWEL BARS	SAW CUTS	TIE BARS	PAVEMENT FABRIC
				TYPE I	TYPE II	TYPE III	TYPE IV	Z0017100	44213200	Z0075300	42001200
				12.0" (sq. yd)	12.0" (sq. yd)	12.0" (sq. yd)	12.0" (sq. yd)	(each)	(ft)	(each)	(sq. yd)
126+15.17	LT	6	13	0	9	0	0	22	45	0	0
127+13.17	RT	8	13	0	12	0	0	22	47	0	0
127+13.17	LT	6	13	0	9	0	0	22	45	0	0
129+91.00	RT	6	13	0	9	0	0	22	45	0	0
129+91.00	LT	6	13	0	9	0	0	22	45	0	0
130+89.00	RT	6	13	0	9	0	0	22	45	0	0
130+89.00	LT	10	13	0	14	0	0	22	49	0	0
131+89.00	RT	6	13	0	9	0	0	22	45	0	0
131+89.00	LT	6	13	0	9	0	0	22	45	0	0
132+84.69	RT	6	13	0	9	0	0	22	45	0	0
132+84.69	LT	6	13	0	9	0	0	22	45	0	0
133+84.69	RT	12	13	0	0	17	0	22	51	0	17
133+84.69	LT	12	13	0	0	17	0	22	51	0	17
134+84.69	RT	10	13	0	14	0	0	22	49	0	0
134+84.69	LT	12	13	0	0	17	0	22	51	0	17
135+25.69	RT	12	13	0	0	17	0	22	51	0	17
135+25.69	LT	12	13	0	0	17	0	22	51	0	17
135+79.69	RT	20	13	0	0	0	29	22	59	10	29
135+79.69	LT	20	13	0	0	0	29	22	59	10	29
136+84.69	RT	12	13	0	0	17	0	22	51	0	17
136+84.69	LT	12	13	0	0	17	0	22	51	0	17
137+09.69	RT	6	13	0	9	0	0	22	45	0	0
137+81.69	RT	30	13	0	0	0	43	33	69	15	43
137+81.69	LT	6	13	0	9	0	0	22	45	0	0
138+86.69	RT	12	13	0	0	17	0	22	51	0	17
138+86.69	LT	12	13	0	0	17	0	22	51	0	17
139+83.69	RT	12	13	0	0	17	0	22	51	0	17
139+83.69	LT	12	13	0	0	17	0	22	51	0	17
140+80.69	RT	12	13	0	0	17	0	22	51	0	17
140+80.69	LT	12	13	0	0	17	0	22	51	0	17
SUB TOTALS				0 (sq. yd)	136 (sq. yd)	225 (sq. yd)	101 (sq. yd)	671 (each)	1490 (ft)	35 (each)	326 (sq. yd)
TOTALS				0.0 (sq. yd)	361 (sq. yd)	264 (sq. yd)	159 (sq. yd)	1309 (each)	2844 (ft)	55 (each)	423 (sq. yd)