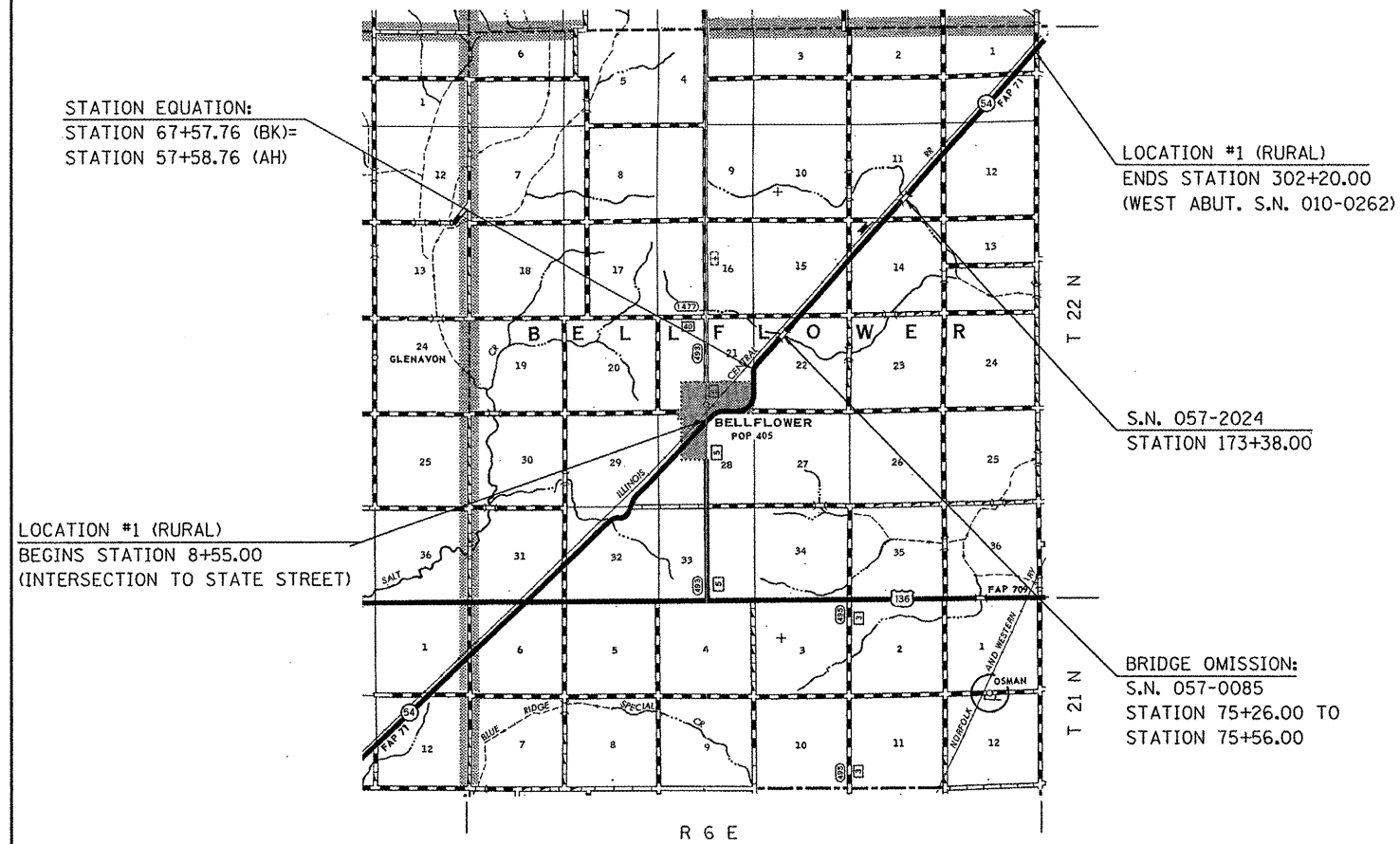


**LOCATION MAP #1**  
**F.A.P. 71 (IL 54), FROM BELLFLOWER**  
**TO FORD COUNTY LINE**

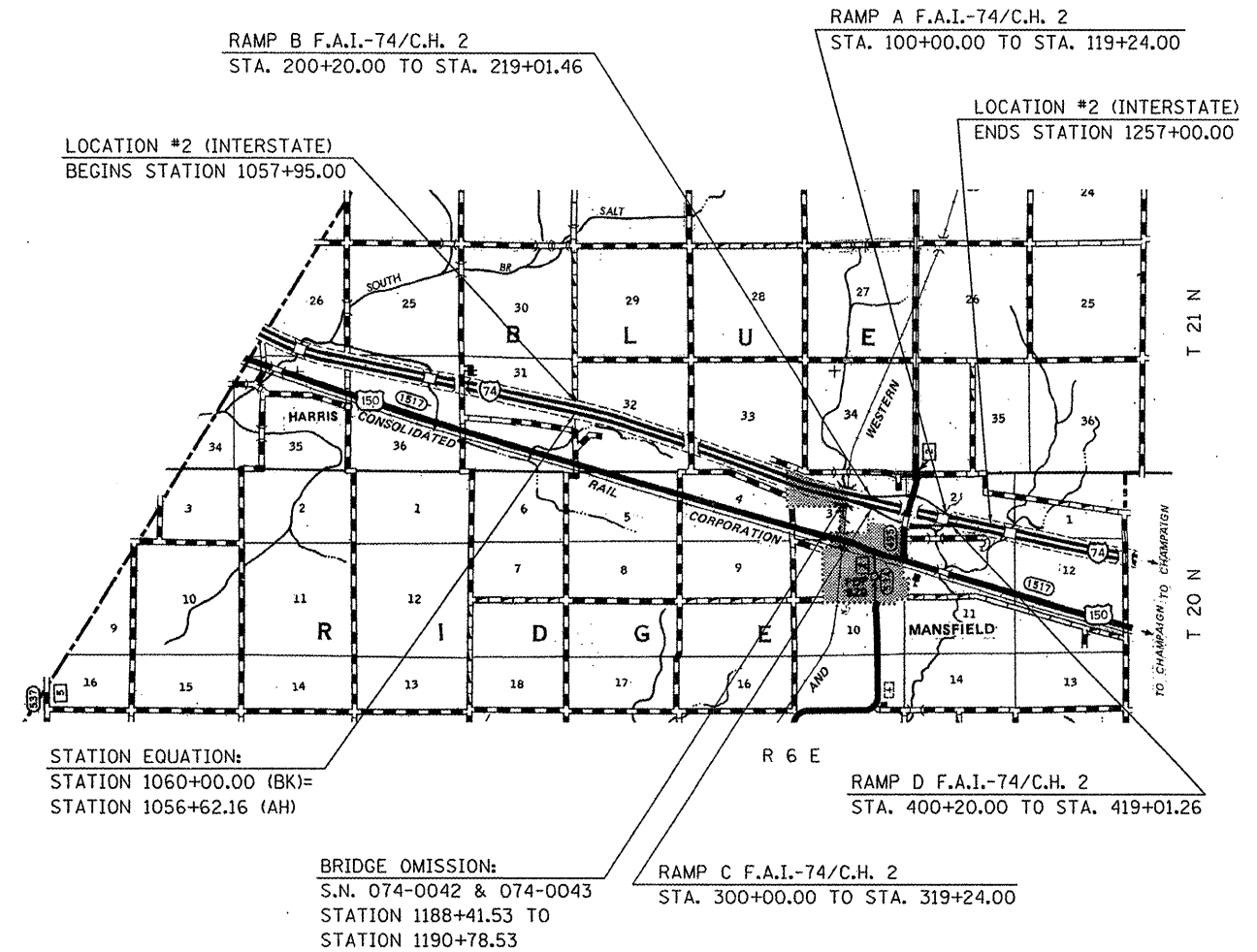
**MCLEAN COUNTY / 2-LANE RURAL & CURB & GUTTER**



**TOTAL LENGTH OF SECTION = 30,364.00 FT. = 5.751 MILES**  
**NET LENGTH OF SECTION = 30,334.00 FT. = 5.745 MILES**

**LOCATION MAP #2**  
**F.A.I. 74, FROM 1 MILE EAST TO**  
**3 MILES WEST OF MANSFIELD**

**PIATT COUNTY / INTERSTATE**



**TOTAL LENGTH OF SECTION = 20,242.84 FT. = 3.834 MILES**  
**NET LENGTH OF SECTION = 20,005.84 FT. = 3.789 MILES**

FILE NAME =	USER NAME = ceerlockjd	DESIGNED - GMR	REVISED -
ce:\p\work\PIATT\CEARLOCKJD\0180411\	70829-sht-loc_maps.dgn	DRAWN - BBP	REVISED -
	PLOT SCALE = 40,0000 / IN.	CHECKED -	REVISED -
	PLOT DATE = 1/28/2010	DATE - 01/12/10	REVISED -

**STATE OF ILLINOIS**  
**DEPARTMENT OF TRANSPORTATION**

<b>LOCATION MAPS</b>			
<b>LOCATIONS 1 &amp; 2</b>			
SCALE:	SHEET NO. 1 OF 3 SHEETS	STA.	TO STA.

F.A. RTE.	SECTION	COUNTY	TOTAL SHEETS	SHEET NO.
VAR.	.	**	20	3
CONTRACT NO. 70829				
ILLINOIS FED. AID PROJECT				

\*D-5 CRACK & JOINT SEAL 2010-1  
 \*\*MCLEAN & PIATT