

STATE OF ILLINOIS  
 DEPARTMENT OF TRANSPORTATION  
 DIVISION OF HIGHWAYS

**PROPOSED  
 HIGHWAY PLANS**

VARIOUS ROUTES  
 SECTION D5 CRACK & JOINT SEAL 2010-1

CRACK & JOINT SEALING  
 MCLEAN & PIATT COUNTIES

C-95-064-09

F.A. RTE.	SECTION	COUNTY	TOTAL SHEETS	SHEET NO.
VAR.	*	**	20	1
		ILLINOIS	CONTRACT NO. 70829	

\*D5 CRACK & JOINT SEAL 2010-1  
 \*\*MCLEAN & PIATT

D-95-064-09

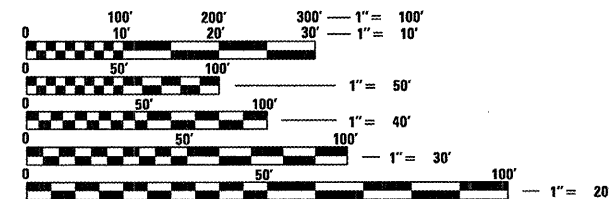
FOR INDEX OF SHEETS, SEE SHEET NO. 2  
 FOR SUMMARY OF QUANTITIES, SEE SHEET NO. 7

**CURRENT ADT**

LOCATION #1 1,000 (2009)  
 LOCATION #2 19,500 (2009)  
 LOCATION #3 5,700 (2009)  
 LOCATION #4 1,600 (2009)  
 LOCATION #5 5,000 (2009)

**DESIGN DESIGNATION**

N/A



FULL SIZE PLANS HAVE BEEN PREPARED USING STANDARD ENGINEERING SCALES. REDUCED SIZED PLANS WILL NOT CONFORM TO STANDARD SCALES. IN MAKING MEASUREMENTS ON REDUCED PLANS, THE ABOVE SCALES MAY BE USED.

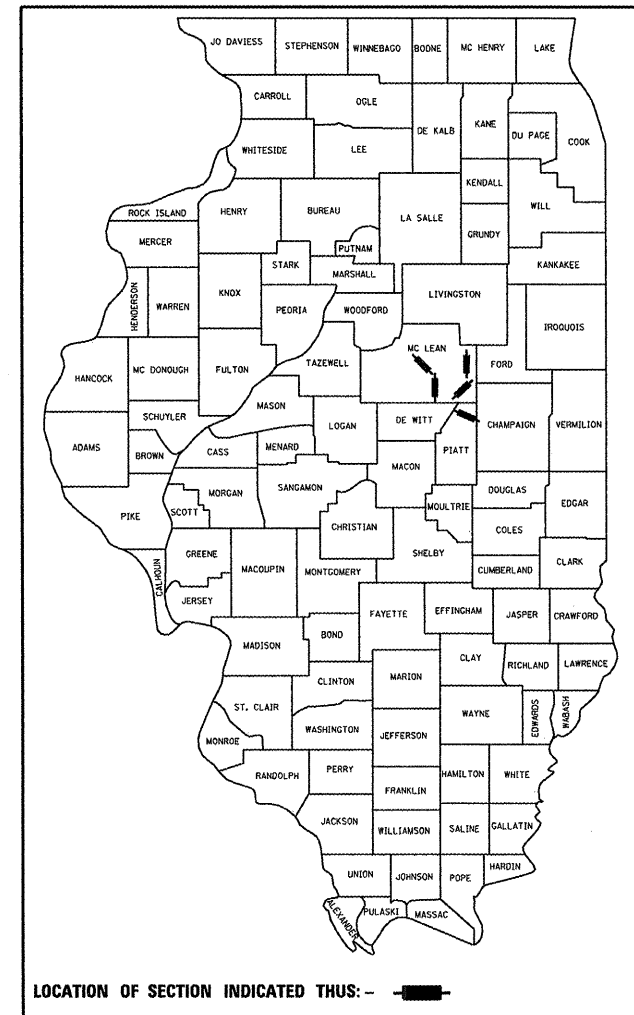
J.U.L.I.E.  
 JOINT UTILITY LOCATION INFORMATION FOR EXCAVATION  
 1-800-892-0123  
 OR 811

PROJECT ENGINEER: JASON STULTS  
 SQUAD LEADER: GREG EAGLIN  
 DESIGNER: GARRY ROSS  
 217-465-4181  
 CONTRACT NO. 70829

TOWNSHIPS:  
 BELLFLOWER  
 BLUE RIDGE  
 EMPIRE  
 CHENNEYS GROVE  
 DOWNS, EMPIRE

FOR LOCATION MAPS, SEE SHEETS NO. 3 - 5

FOR TOTAL & NET LENGTHS, SEE SHEETS NO. 3 - 5



LOCATION OF SECTION INDICATED THUS: - [Symbol] -

STATE OF ILLINOIS  
 DEPARTMENT OF TRANSPORTATION  
 DIVISION OF HIGHWAYS

SUBMITTED 1/18 20 10  
Jason M. Coover  
 DEPUTY DIRECTOR OF HIGHWAYS, REGION ENGINEER

March 19, 2010  
Scott E. Still, P.E.  
 ENGINEER OF DESIGN AND ENVIRONMENT

Christine M. Reed  
 DIRECTOR OF HIGHWAYS/CHIEF ENGINEER

**PRINTED BY THE AUTHORITY  
 OF THE STATE OF ILLINOIS**

## INDEX OF SHEETS

SHEET NO.	ITEM
1	COVER SHEET
2	INDEX OF SHEETS
2	LIST OF STANDARDS
3-5	LOCATION MAPS
6	GENERAL NOTES
7	SUMMARY OF QUANTITIES
8-12	EXISTING TYPICAL CROSS SECTIONS
13	SCHEDULE OF QUANTITIES
14	DETAIL FOR CRACK AND JOINT SEALING
15	DETAIL FOR TRAFFIC CONTROL FOR RAMPS
16-19	DETAIL FOR PAVEMENT MARKING AND MARKERS (RURAL & URBAN APPLICATIONS)
20	DETAIL FOR PAVEMENT MARKING (INTERSTATE & MULTI-LANE APPLICATIONS)

## LIST OF STANDARDS

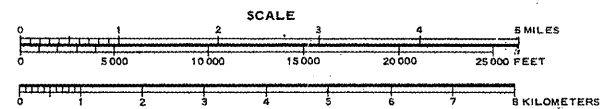
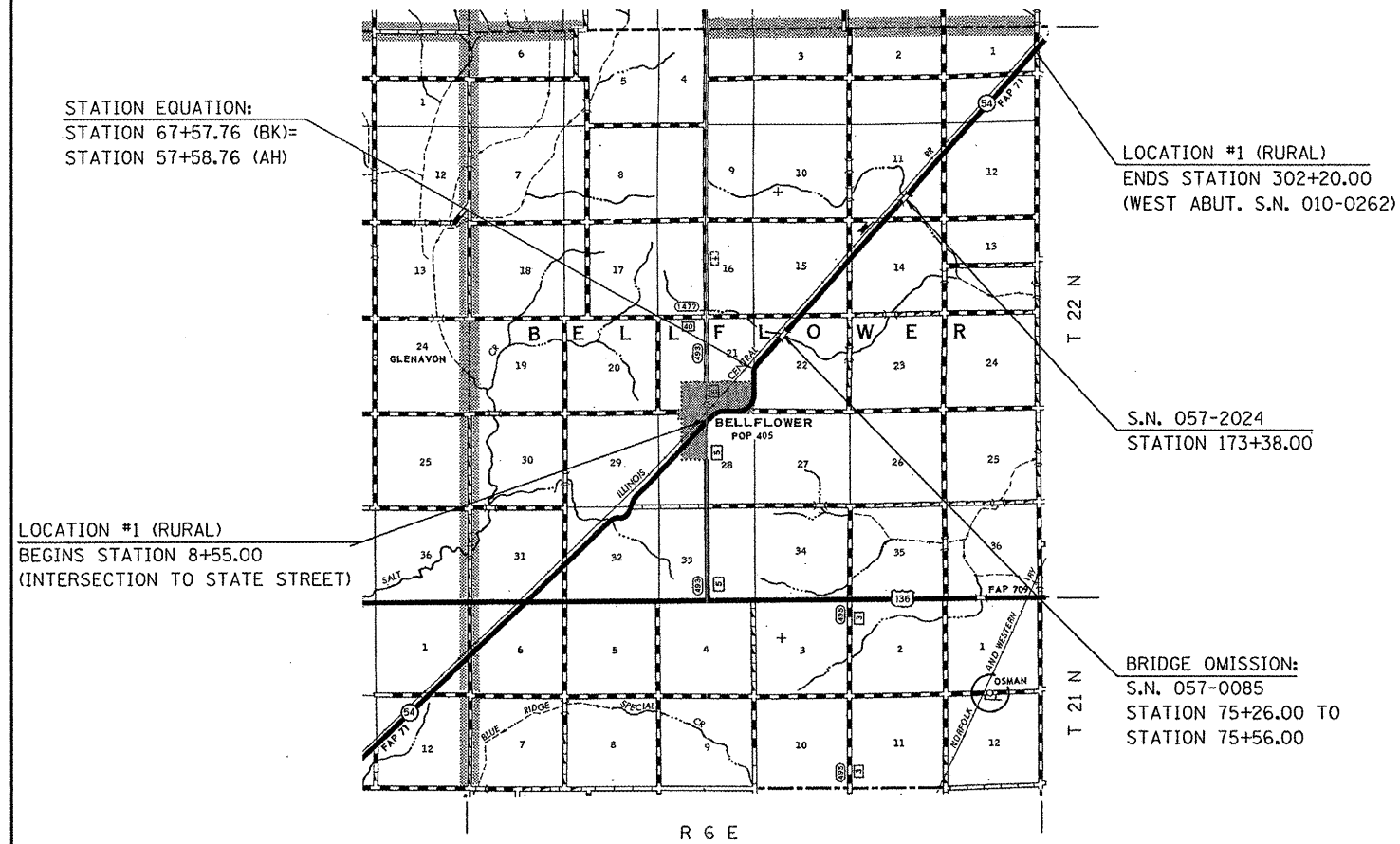
STANDARD	NAME OF STANDARD
000001-05	STANDARD SYMBOLS, ABBREVIATIONS AND PATTERNS
001006	DECIMAL OF AN INCH AND OF A FOOT
701301-03	LANE CLOSURE, 2L, 2W, SHORT TIME OPERATIONS
701306-02	LANE CLOSURE, 2L, 2W, SLOW MOVING OPERATIONS, DAY ONLY FOR SPEEDS ≥ 45 MPH
701311-03	LANE CLOSURE, 2L, 2W MOVING OPERATIONS - DAY ONLY
701400-04	APPROACH TO LANE CLOSURE, FREEWAY / EXPRESSWAY
701406-05	LANE CLOSURE, FREEWAY, EXPRESSWAY, DAY OPERATIONS ONLY
701411-06	LANE CLOSURE, MULTILANE, AT ENTRANCE OR EXIT RAMP, FOR SPEEDS ≥ 45 MPH
701426-03	LANE CLOSURE, MULTILANE, INTERMITTENT OR MOVING OPERATION, FOR SPEEDS ≥ 45 MPH
701501-05	URBAN LANE CLOSURE, 2L, 2W, UNDIVIDED
701901-01	TRAFFIC CONTROL DEVICES

\*D5 CRACK & JOINT SEAL 2010-1  
\*\*MCLEAN & PIATT

FILE NAME =	USER NAME = ceerlockjd	DESIGNED - GMR	REVISED -	<b>STATE OF ILLINOIS DEPARTMENT OF TRANSPORTATION</b>	<b>INDEX OF SHEETS &amp; LIST OF STANDARDS</b>	F.A. RTE.	SECTION	COUNTY	TOTAL SHEETS	SHEET NO.	
c:\pwork\puidot\ceerlockjd\0100411\05	0829-shr-gennote.dgn	DRAWN - BBP	REVISED -			VAR.	*	**	20	2	
PLOT SCALE = 40,0000' / IN.	CHECKED -	REVISED -	REVISED -			CONTRACT NO. 70829					
PLOT DATE = 1/28/2010	DATE - 01/12/10	REVISED -	REVISED -			ILLINOIS FED. AID PROJECT					
					SCALE: NONE	SHEET NO. 1 OF 1 SHEETS		STA.		TO STA.	

**LOCATION MAP #1**  
**F.A.P. 71 (IL 54), FROM BELLFLOWER**  
**TO FORD COUNTY LINE**

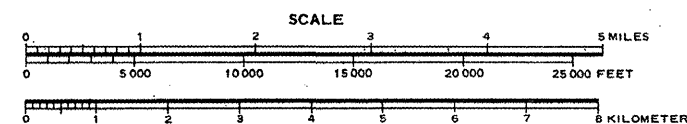
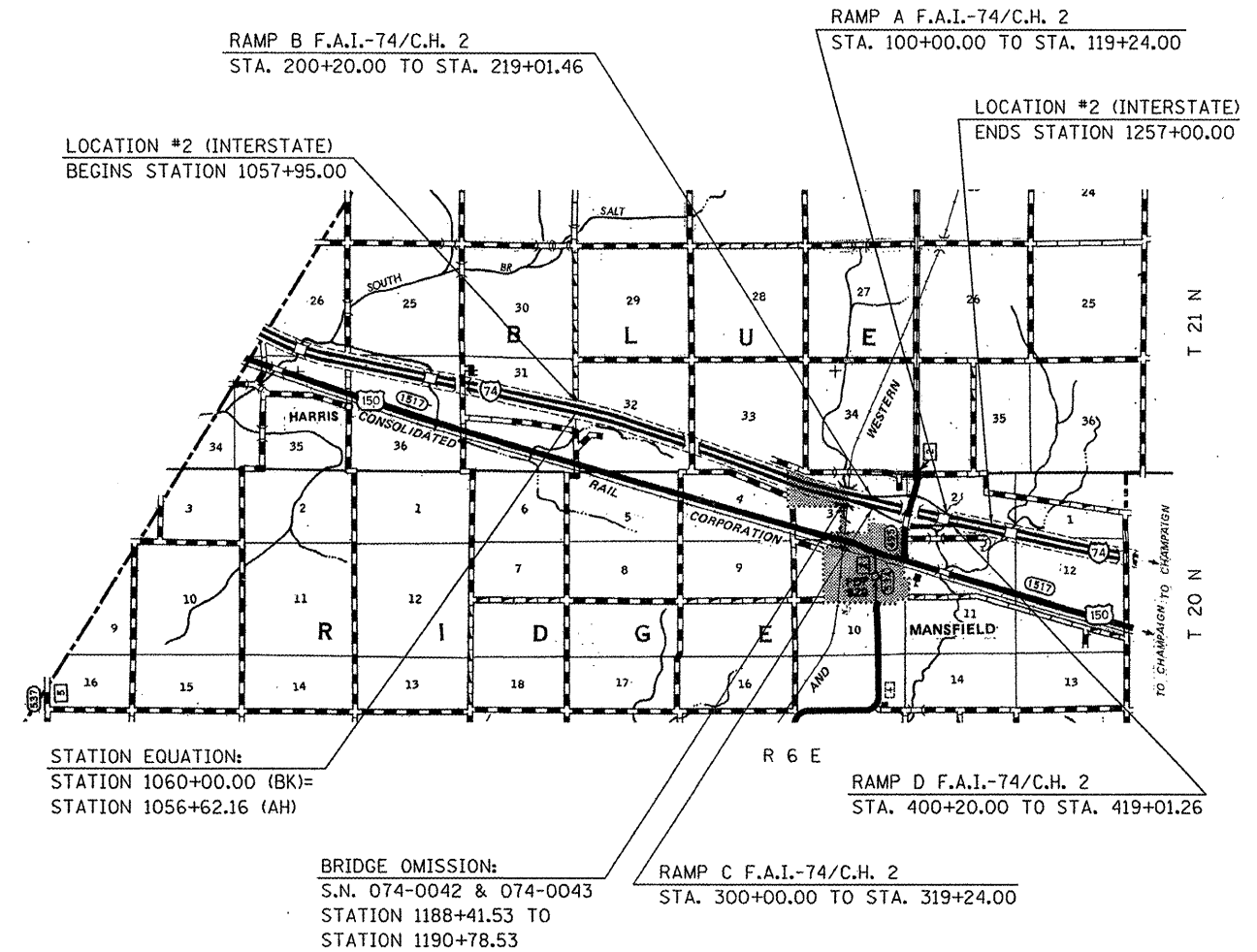
**MCLEAN COUNTY / 2-LANE RURAL & CURB & GUTTER**



**TOTAL LENGTH OF SECTION = 30,364.00 FT. = 5.751 MILES**  
**NET LENGTH OF SECTION = 30,334.00 FT. = 5.745 MILES**

**LOCATION MAP #2**  
**F.A.I. 74, FROM 1 MILE EAST TO**  
**3 MILES WEST OF MANSFIELD**

**PIATT COUNTY / INTERSTATE**



**TOTAL LENGTH OF SECTION = 20,242.84 FT. = 3.834 MILES**  
**NET LENGTH OF SECTION = 20,005.84 FT. = 3.789 MILES**

FILE NAME =	USER NAME = ceerlockjd	DESIGNED - GMR	REVISED -
c:\p\work\PIATT\CEARLOCKJD\0180411\	70829-shr-loc_maps.dgn	DRAWN - BBP	REVISED -
	PLOT SCALE = 40,0000' / IN.	CHECKED -	REVISED -
	PLOT DATE = 1/26/2010	DATE - 01/12/10	REVISED -

**STATE OF ILLINOIS**  
**DEPARTMENT OF TRANSPORTATION**

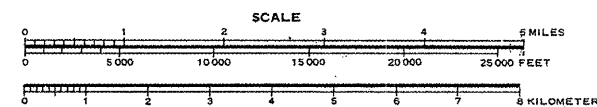
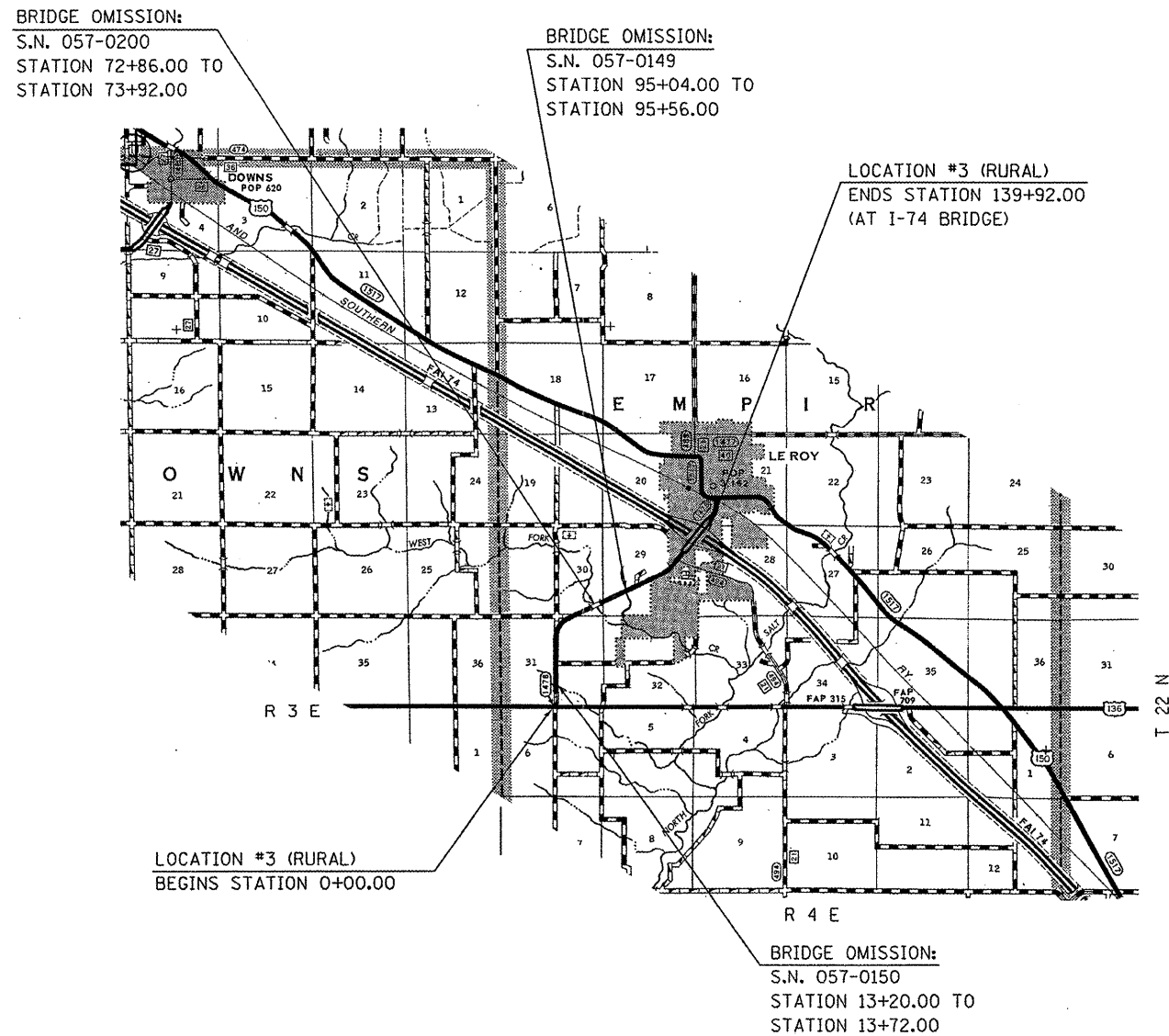
<b>LOCATION MAPS</b>			
<b>LOCATIONS 1 &amp; 2</b>			
SCALE:	SHEET NO. 1 OF 3 SHEETS	STA.	TO STA.

F.A. RTE.	SECTION	COUNTY	TOTAL SHEETS	SHEET NO.
VAR.	.	**	20	3
CONTRACT NO. 70829				
ILLINOIS FED. AID PROJECT				

\*D-5 CRACK & JOINT SEAL 2010-1  
 \*\*MCLEAN & PIATT

**LOCATION MAP #3**  
**F.A.S. 1478 (LEROY SPUR), FROM U.S. 136**  
**TO I-74**

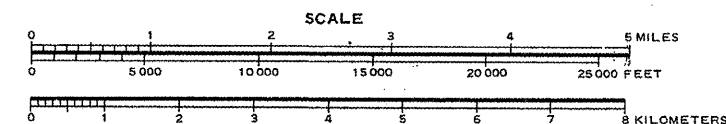
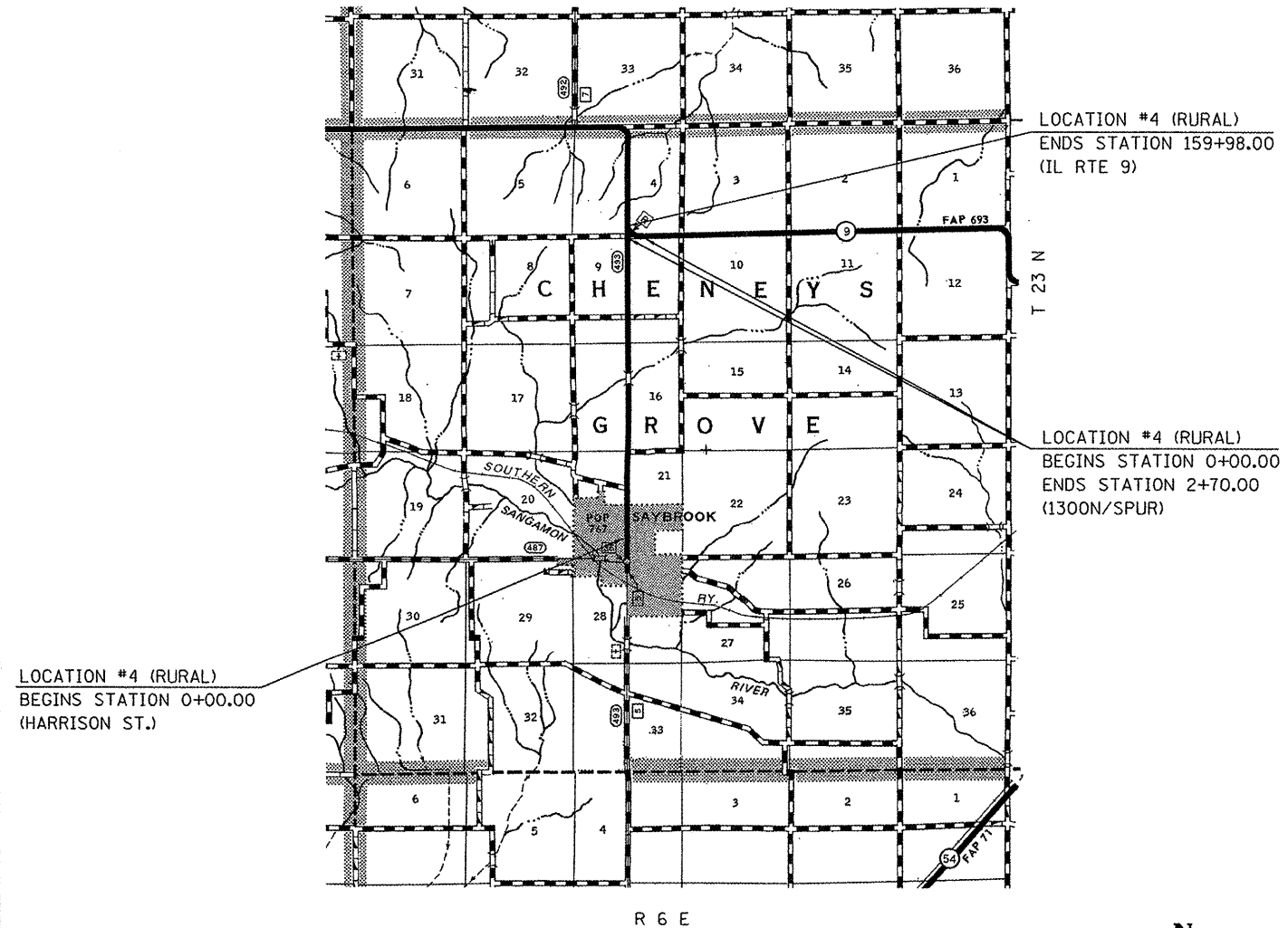
**MCLEAN COUNTY / 2-LANE RURAL & CURB & GUTTER**



**TOTAL LENGTH OF SECTION = 13,992.00 FT. = 2.650 MILES**  
**NET LENGTH OF SECTION = 13,782.00 FT. = 2.610 MILES**

**LOCATION MAP #4**  
**F.A.S. 493 (SAYBROOK SPUR), FROM SAYBROOK**  
**TO IL 9**

**MCLEAN COUNTY / RURAL 2 - LANE**



**TOTAL LENGTH OF SECTION = 16,268.00 FT. = 3.081 MILES**  
**NET LENGTH OF SECTION = 16,268.00 FT. = 3.081 MILES**

FILE NAME =	USER NAME = cealockjd	DESIGNED - GMR	REVISED -
ct:\p\work\PWID001\CEARLOCKJD\01180411\070829-sh1-loc.maps.dgn		DRAWN - BBP	REVISED -
		CHECKED -	REVISED -
		DATE - 01/12/10	REVISED -

**STATE OF ILLINOIS**  
**DEPARTMENT OF TRANSPORTATION**

<b>LOCATION MAPS</b>	
<b>LOCATIONS 3 &amp; 4</b>	
SCALE:	STATION TO STATION
SHEET NO. 2 OF 3 SHEETS	STA. TO STA.

F.A.S. RTE. VAR.	SECTION	COUNTY	TOTAL SHEETS	SHEET NO.
	*	**	20	4
CONTRACT NO. 70829				
ILLINOIS FED. AID PROJECT				

\*D-5 CRACK & JOINT SEAL 2010-1  
 \*\*MCLEAN & PIATT

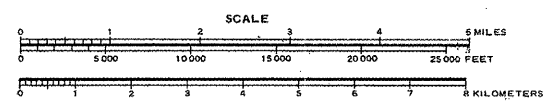
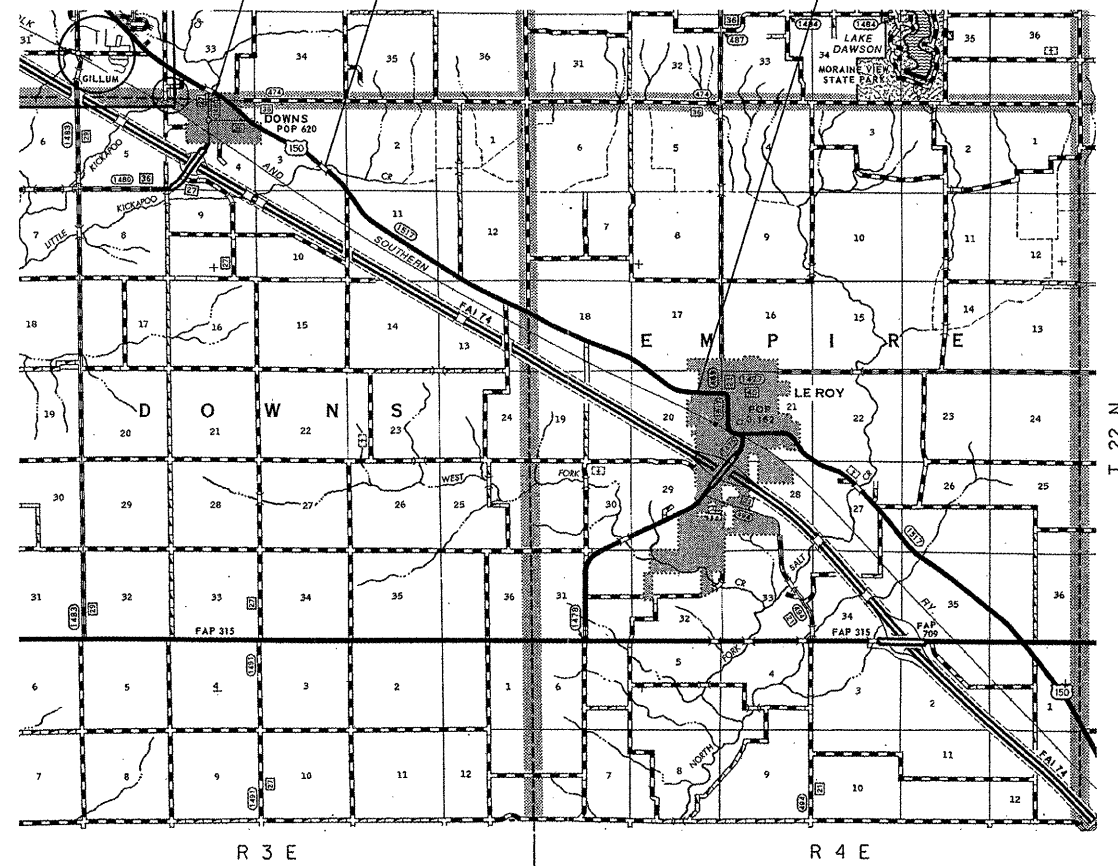
**LOCATION MAP #5**  
**F.A.S. 1517 (U.S. ROUTE 150), FROM DOWNS TO LEROY**

**MCLEAN COUNTY / 2-LANE RURAL & CURB & GUTTER**

LOCATION #5 (RURAL)  
 BEGINS STATION 412+94.00  
 (E. OF KICKAPOO CREEK)

S.N. 057-2034  
 STATION 489+96.00

LOCATION #5 (RURAL)  
 ENDS STATION 754+51.18  
 (N. HEMLOCK ST.)



**TOTAL LENGTH OF SECTION = 34,157.18 FT. = 6.469 MILES**  
**NET LENGTH OF SECTION = 34,157.18 FT. = 6.469 MILES**



FILE NAME =	USER NAME = ceo-lockjd	DESIGNED - GMR	REVISED -
c:\pwork\pwork\CEARLOCKJD\8180411\	78829-sh1-loc.maps.dgn	DRAWN - BBP	REVISED -
	PLOT SCALE = 48.0000' / IN.	CHECKED -	REVISED -
	PLOT DATE = 1/28/2010	DATE - 01/12/10	REVISED -

**STATE OF ILLINOIS**  
**DEPARTMENT OF TRANSPORTATION**

**LOCATION MAPS**  
**LOCATION 5**

SCALE: SHEET NO. 3 OF 3 SHEETS STA. TO STA.

F.A. RTE.	SECTION	COUNTY	TOTAL SHEETS	SHEET NO.
VAR.	*	**	20	5
CONTRACT NO. 70829				
ILLINOIS FED. AID PROJECT				

\*D-5 CRACK & JOINT SEAL 2010-1  
 \*\*MCLEAN & PIATT



## SUMMARY OF QUANTITIES

LOCATION OF WORK: VARIOUS ROUTES  
D5 CRACK & JOINT SEAL 2010-1  
MCLEAN & PIATT COUNTIES

COUNTY:	MCLEAN	PIATT
	RURAL	RURAL
	ROUT & SEAL	ROUT & SEAL
FUNDING BREAKOUT:	100% STATE	100% STATE
CONSTRUCTION TYPE CODE:	F000	F000

CODE NO.	ITEM	UNIT	TOTAL QUANTITY	QUANTITY	QUANTITY
45100100	CRACK ROUTING (PAVEMENT)	FOOT	506,945.0	359,053.0	147,892.0
45100200	CRACK FILLING	POUND	202,778.0	143,621.0	59,157.0
67100100	MOBILZATION	L SUM	1.0	0.8	0.2
70100420	TRAFFIC CONTROL AND PROTECTION, STANDARD 701411	EACH	4.0		4.0
70100460	TRAFFIC CONTROL AND PROTECTION, STANDARD 701306	L SUM	1.0	1.0	
70100700	TRAFFIC CONTROL AND PROTECTION, STANDARD 701406	L SUM	1.0		1.0
70102620	TRAFFIC CONTROL AND PROTECTION, STANDARD 701501	L SUM	1.0	1.0	
* 78001110	PAINT PAVEMENT MARKING - LINE 4"	FOOT	13,357.0	13,357.0	
X7015005	CHANGEABLE MESSAGE SIGN	CAL DA	28.0		28.0

\* SPECIALTY ITEMS

SEE SCHEDULE OF QUANTITIES FOR BREAKOUT BY LOCATION

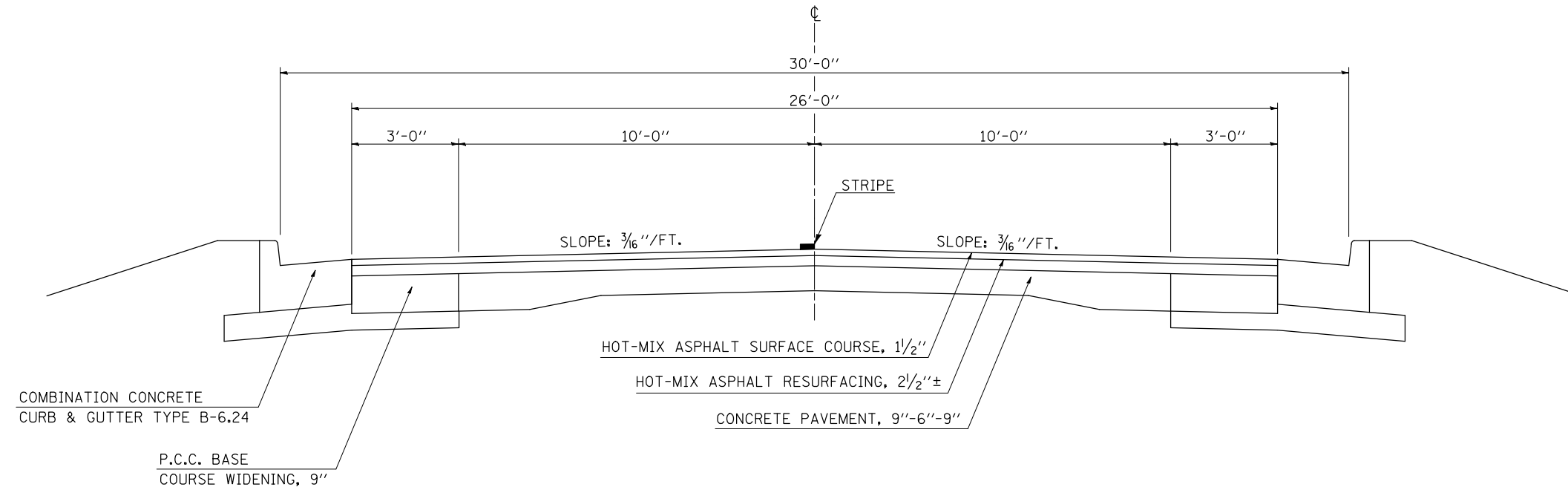
\*D5 CRACK & JOINT SEAL 2010-1  
\*\*MCLEAN & PIATT

FILE NAME =	USER NAME = ceerlockjd	DESIGNED - GMR	REVISED -	<b>STATE OF ILLINOIS DEPARTMENT OF TRANSPORTATION</b>	<b>SUMMARY OF QUANTITIES</b>			F.A. RTE.	SECTION	COUNTY	TOTAL SHEETS	SHEET NO.	
ct:\pwork\pwork\ceerlockjd\0108411\0829-shr-500.dgn	0829-shr-500.dgn	DRAWN - BBP	REVISED -		SCALE: NONE	SHEET NO. 1	OF 1	SHEETS	STA.	TO STA.	**	20	7
	PLOT SCALE = 40.0000 "/>												
	PLOT DATE = 1/28/2010	DATE - 01/12/10	REVISED -					CONTRACT NO. 70829		ILLINOIS FED. AID PROJECT			

**Ⓐ EXISTING TYPICAL CROSS SECTION – F.A.P. ROUTE 71 (IL 54)**

LOCATION #1

STATION TO STATION  
8+55.00 28+93.00 Ⓑ

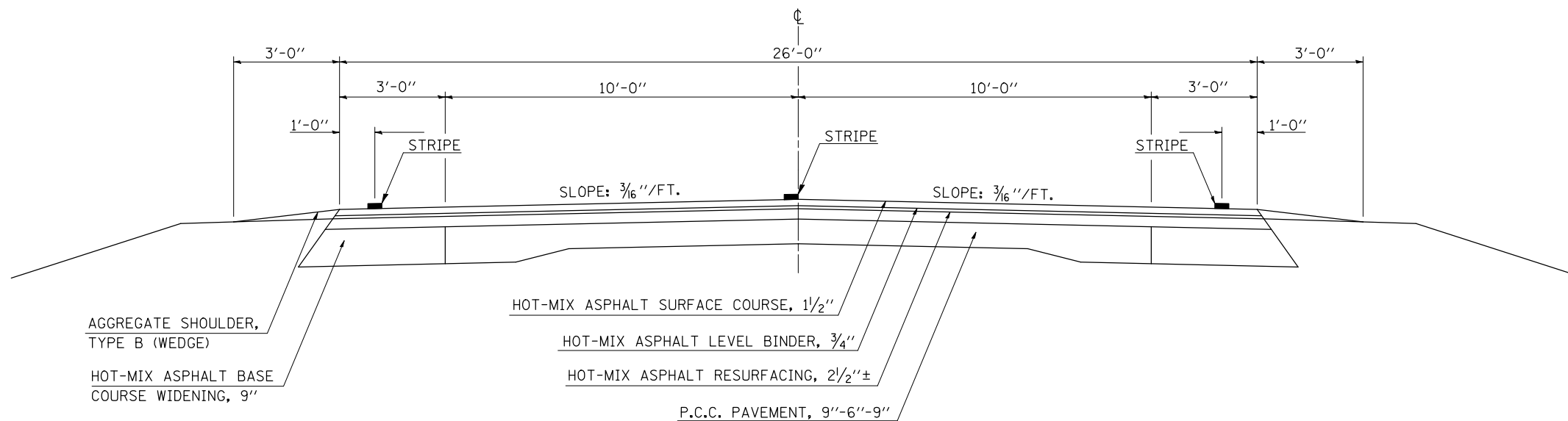


**Ⓑ EXISTING TYPICAL CROSS SECTION – F.A.P. RTE. 71 (IL 54)**

LOCATION #1

STATION TO STATION  
Ⓐ 28+93.00 67+57.76 (BK)  
57+58.76 (AH) 302+20.00

BRIDGE OMISSION (057-0085):  
STA. 75+26.00 TO STA. 75+56.00



•D-5 CRACK & JOINT SEAL 2010-1  
••MCLEAN & PIATT

FILE NAME =	USER NAME = ceorlockjd	DESIGNED - GMR	REVISED -
et\pwwork\pwwid\DOT\CEARLOCKJD\0180411\0570829\sh-typical.dgn		DRAWN - BBP	REVISED -
PLOT SCALE = 40.0000 ' / IN.		CHECKED -	REVISED -
PLOT DATE = 1/28/2010		DATE - 01/12/10	REVISED -

STATE OF ILLINOIS  
DEPARTMENT OF TRANSPORTATION

EXISTING TYPICAL CROSS SECTIONS  
LOCATION #1

SCALE: NONE SHEET NO. 1 OF 5 SHEETS STA. TO STA.

F.A. RTE.	SECTION	COUNTY	TOTAL SHEETS	SHEET NO.
VAR.	*	**	20	8
			CONTRACT NO. 70829	
ILLINOIS FED. AID PROJECT				

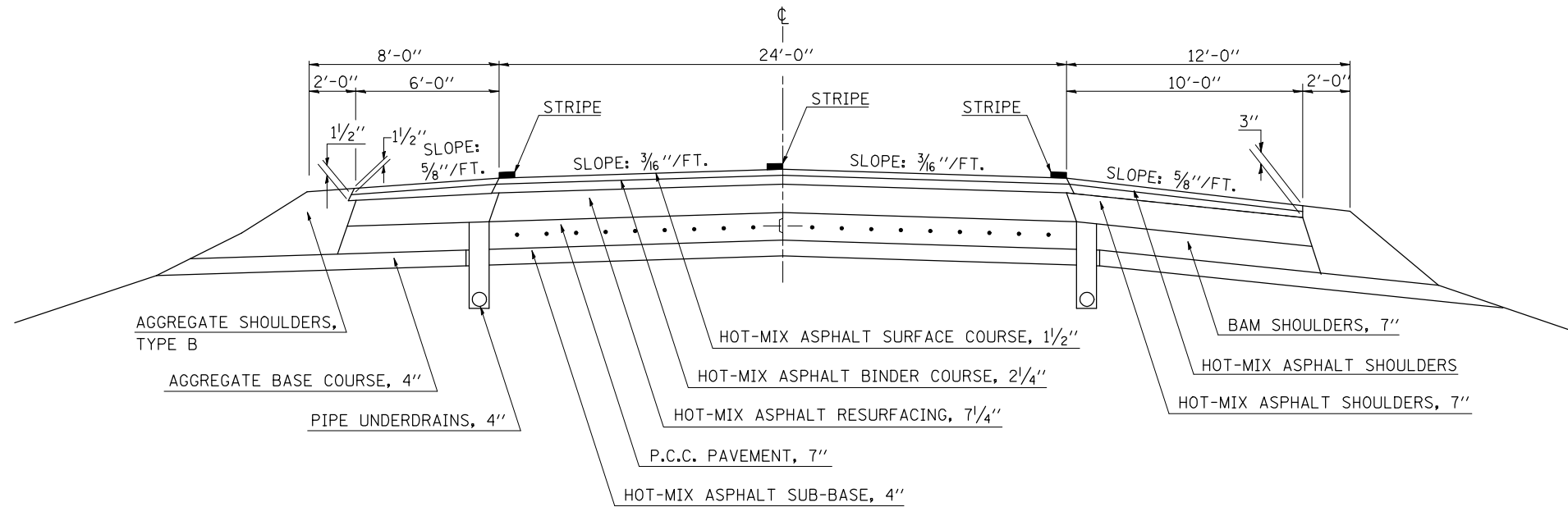


# EXISTING TYPICAL CROSS SECTION – F.A.I. 74

## LOCATION #2

BRIDGE OMISSION (074-0042 & 0043):  
STA. 1188+41.53 TO STA. 1190+78.53

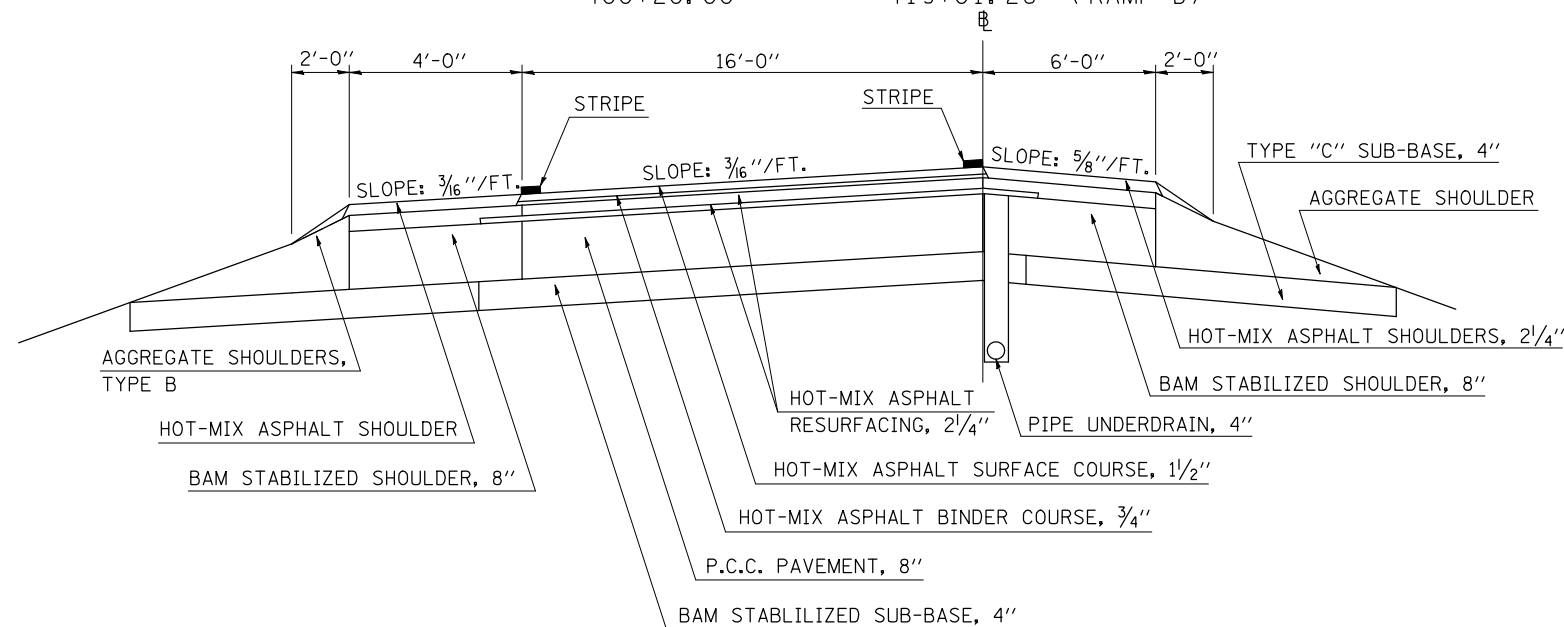
STATION	TO	STATION
1057+95.00		1060+00.00 (BK)
1056+62.16 (AH)		1257+00.00



# EXISTING TYPICAL CROSS SECTION – F.A.I. 74 / C.H. 2 RAMPS

## LOCATION #2

STATION	TO	STATION
100+00.00		119+24.00 (RAMP A)
200+20.00		219+01.46 (RAMP B)
300+00.00		319+24.00 (RAMP C)
400+20.00		419+01.26 (RAMP D)



•D-5 CRACK & JOINT SEAL 2010-1  
\*\*MCLEAN & PIATT

FILE NAME =	USER NAME = ceorlockjd	DESIGNED - GMR	REVISED -
ce:\pw\work\PIWIDOT\CEARLOCKJD\0180411\0570829\sh-typical.dgn		DRAWN - BBP	REVISED -
PLOT SCALE = 40.0000 ' / IN.		CHECKED -	REVISED -
PLOT DATE = 1/28/2010		DATE - 01/12/10	REVISED -

STATE OF ILLINOIS  
DEPARTMENT OF TRANSPORTATION

EXISTING TYPICAL CROSS SECTIONS  
LOCATION #2

SCALE: NONE SHEET NO. 2 OF 5 SHEETS STA. TO STA.

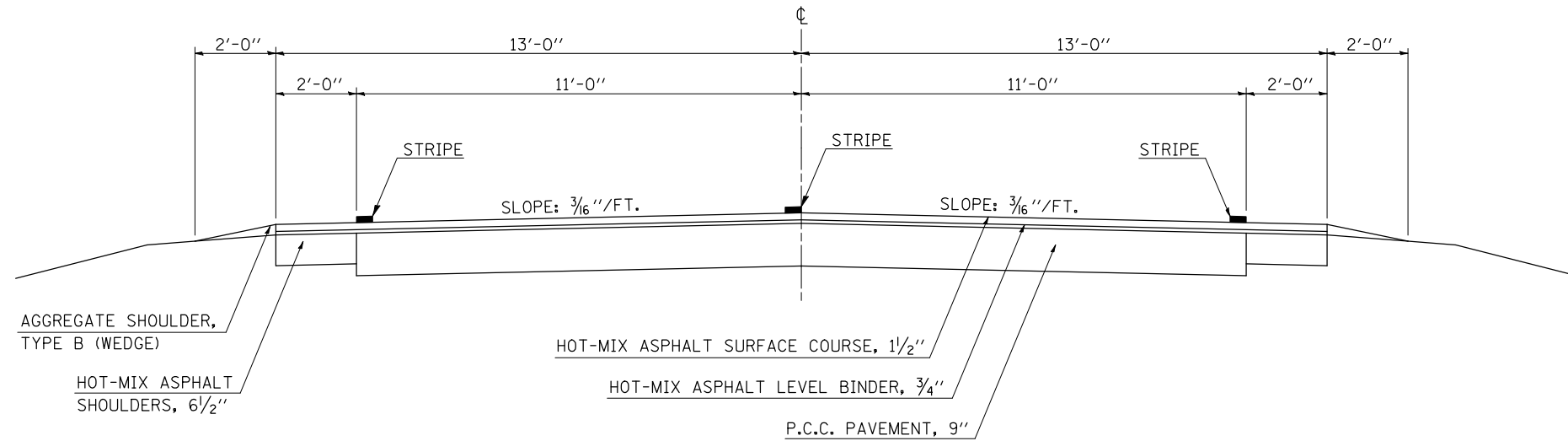
F.A. RTE.	SECTION	COUNTY	TOTAL SHEETS	SHEET NO.
VAR.	*	**	20	9
CONTRACT NO. 70829				
ILLINOIS FED. AID PROJECT				

**(A) EXISTING TYPICAL CROSS SECTION – F.A.S. 1478 (LEROY SPUR)**

**LOCATION #3**

STATION TO STATION  
0+00.00 134+64.00 (B)

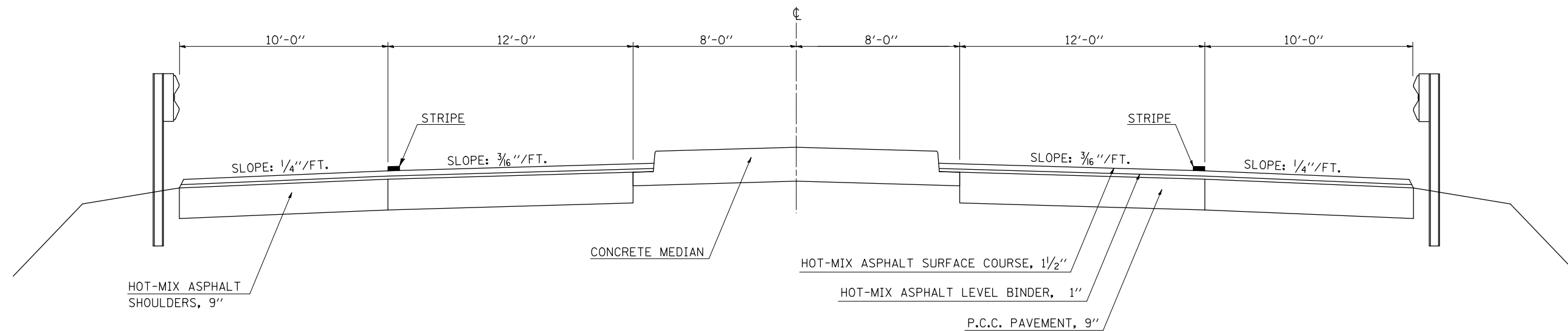
BRIDGE OMISSION:  
STA. 13+20.00 TO STA. 13+72.00 (057-0150)  
STA. 72+86.00 TO STA. 73+92.00 (057-0200)  
STA. 95+04.00 TO STA. 95+56.00 (057-0149)



**(B) EXISTING TYPICAL CROSS SECTION – F.A.S. 1478 (LEROY SPUR)**

**LOCATION #3**

STATION TO STATION  
(A) 134+64.00 139+92.00



•D-5 CRACK & JOINT SEAL 2010-1  
••MCLEAN & PIATT

FILE NAME =	USER NAME = ceorlockjd	DESIGNED - GMR	REVISED -
ce:\pwwork\pwwid\cearlockjd\0180411\0570829-shr-typical.dgn		DRAWN - BBP	REVISED -
PLOT SCALE = 40.0000' / IN.		CHECKED -	REVISED -
PLOT DATE = 1/28/2010		DATE - 01/12/10	REVISED -

**STATE OF ILLINOIS  
DEPARTMENT OF TRANSPORTATION**

**EXISTING TYPICAL CROSS SECTIONS  
LOCATION #3**

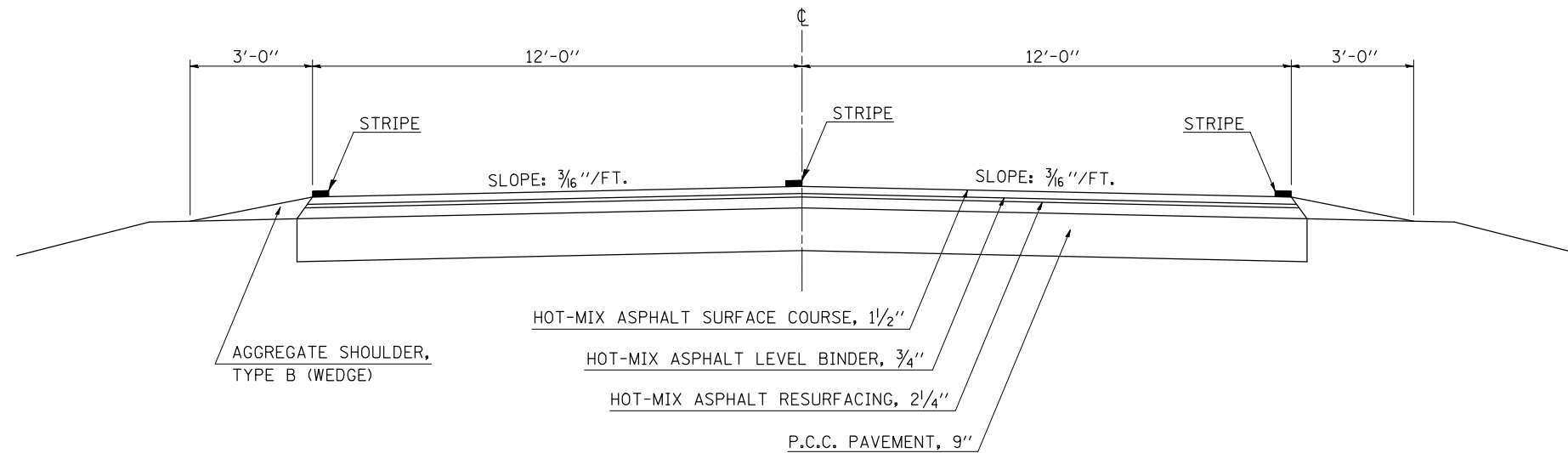
SCALE: NONE SHEET NO. 3 OF 5 SHEETS STA. TO STA.

F.A. RTE.	SECTION	COUNTY	TOTAL SHEETS	SHEET NO.
	*	**	20	10
CONTRACT NO. 70829				
ILLINOIS FED. AID PROJECT				

## EXISTING TYPICAL CROSS SECTION – F.A.S. 493

### LOCATION #4

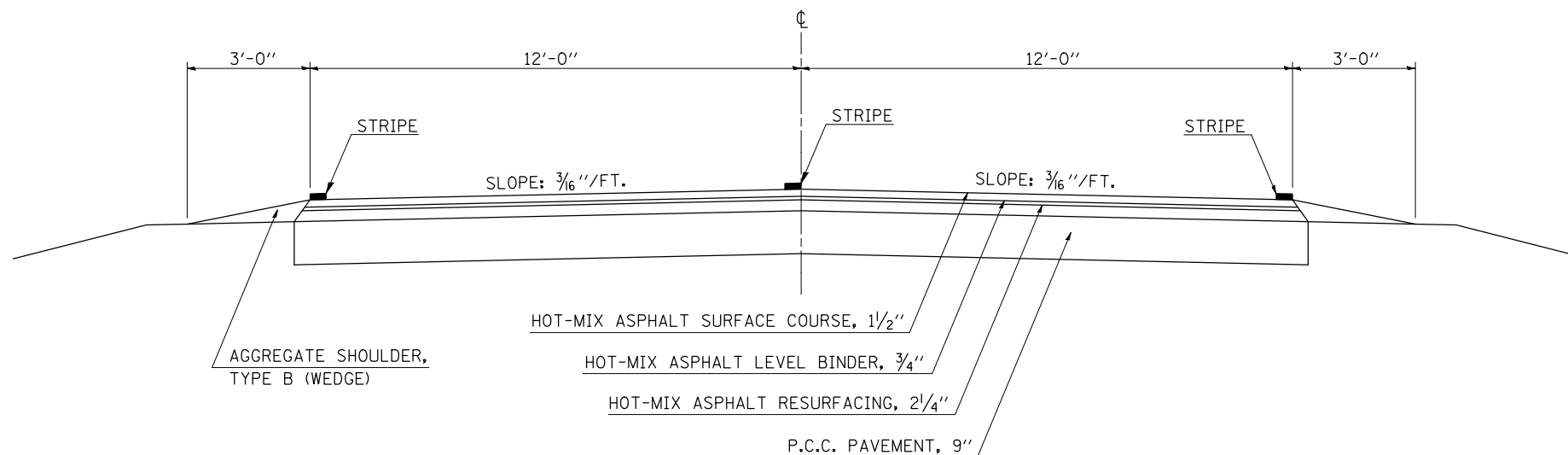
STATION TO STATION  
0+00.00 ( HARRISON ST. ) 159+98.00 ( IL ROUTE 9 )



## EXISTING TYPICAL CROSS SECTION – F.A.S. 493

### LOCATION #4

STATION TO STATION  
0+00.00 2+70.00 ( SPUR-1300N )



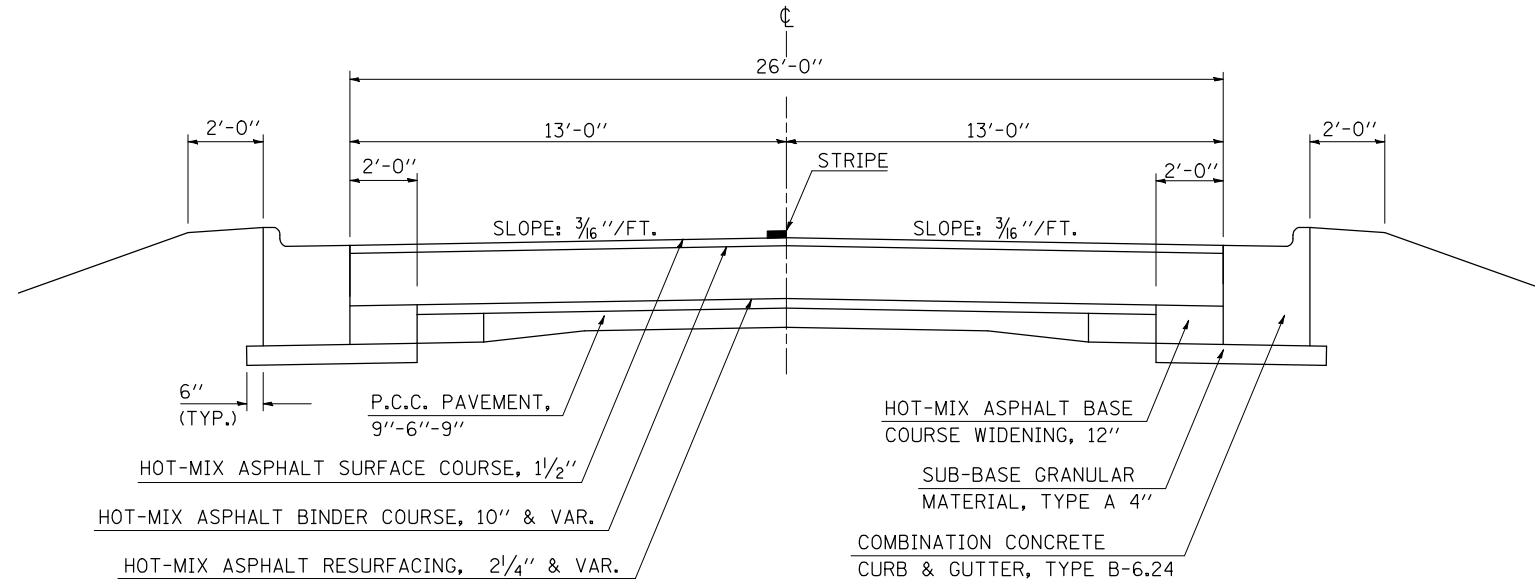
•D-5 CRACK & JOINT SEAL 2010-1  
••MCLEAN & PIATT

FILE NAME =	USER NAME = ceorlockjd	DESIGNED - GMR	REVISED -	<b>STATE OF ILLINOIS DEPARTMENT OF TRANSPORTATION</b>	<b>EXISTING TYPICAL CROSS SECTIONS LOCATION #4</b>		F.A. RTE.	SECTION	COUNTY	TOTAL SHEETS	SHEET NO.
et\pwork\pwork\PWIDOT\CEARLOCKJD\0180411\0670829-sht-typical.dgn		DRAWN - BBP	REVISED -		SCALE: NONE	SHEET NO. 4 OF 5 SHEETS	STA.	TO STA.	••	20	11
PLOT SCALE = 40.0000 ' / IN.		CHECKED -	REVISED -		CONTRACT NO. 70829						
PLOT DATE = 1/28/2010		DATE - 01/11/10	REVISED -		ILLINOIS FED. AID PROJECT						

**(A) EXISTING TYPICAL CROSS SECTION – F.A.S. 1517 (U.S. 150)**

**LOCATION #5**

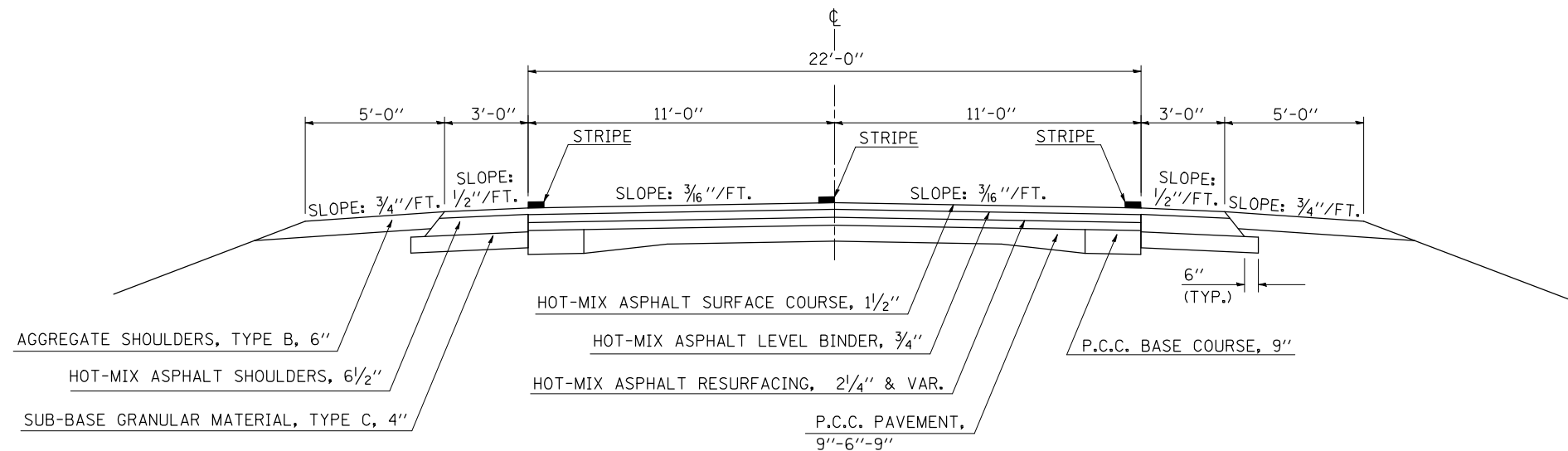
STATION TO STATION  
412+94.00 438+84.32 (B)



**(B) EXISTING TYPICAL CROSS SECTION – F.A.S. 1517 (U.S. 150)**

**LOCATION #5**

STATION TO STATION  
(A) 438+84.82 754+51.18 (N. HEMLOCK ST.)



•D-5 CRACK & JOINT SEAL 2010-1  
••MCLEAN & PIATT

FILE NAME =	USER NAME = ceerlockjd	DESIGNED - GMR	REVISED -	<b>STATE OF ILLINOIS DEPARTMENT OF TRANSPORTATION</b>	<b>EXISTING TYPICAL CROSS SECTIONS LOCATION #5</b>			F.A. RTE.	SECTION	COUNTY	TOTAL SHEETS	SHEET NO.	
ce\p\work\p\WIDOT\CEARLOCKJD\0180411\0570829-shr-typical.dgn		DRAWN - BBP	REVISED -		SCALE: NONE	SHEET NO. 5 OF 5 SHEETS	STA.	TO STA.	VAR.	•	••	20	12
		CHECKED -	REVISED -		CONTRACT NO. 70829								
		DATE - 01/11/10	REVISED -		ILLINOIS FED. AID PROJECT								

# SCHEDULE OF QUANTITIES

LOCATION OF WORK: VARIOUS ROUTES  
D5 CRACK & JOINT SEAL 2010-1  
MCLEAN & PIATT COUNTIES

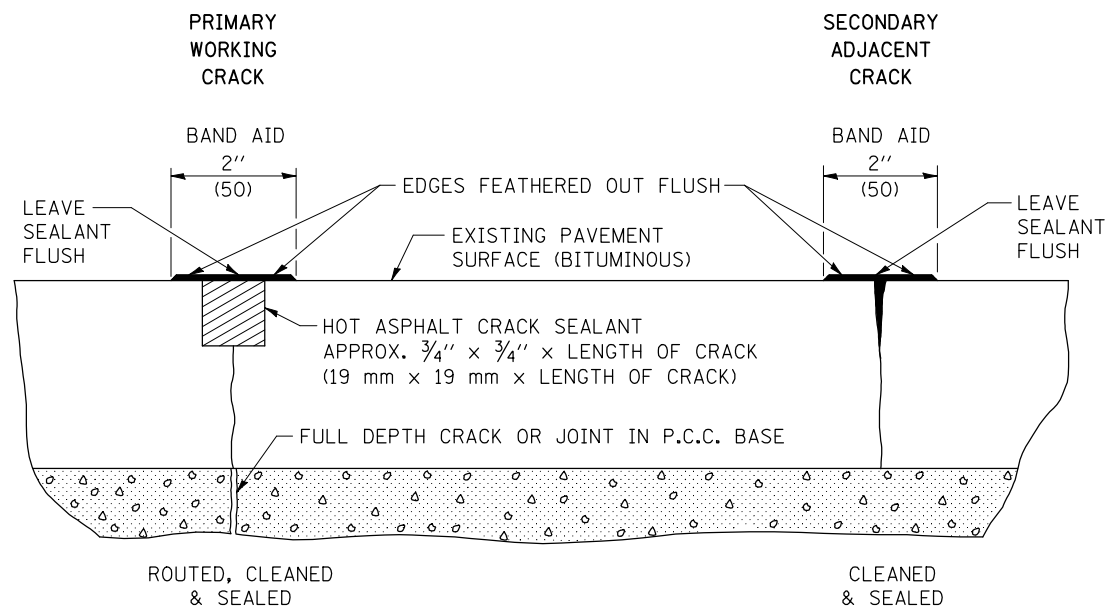
CODE NO.	ITEM	UNIT	TOTAL QUANTITY	ROUTE:	F.A.P. 71	F.A.I. - 74	F.A.S. 1478	F.A.S. 493	F.A.S. 1517
				COUNTY:	MCLEAN	PIATT	MCLEAN	MCLEAN	MCLEAN
					RURAL	RURAL	RURAL	RURAL	RURAL
					ROUT & SEAL	ROUT & SEAL	ROUT & SEAL	ROUT & SEAL	ROUT & SEAL
					100% STATE	100% STATE	100% STATE	100% STATE	100% STATE
				LOCATION:	LOCATION #1	LOCATION #2	LOCATION #3	LOCATION #4	LOCATION #5
					QUANTITY	QUANTITY	QUANTITY	QUANTITY	QUANTITY
45100100	CRACK ROUTING (PAVEMENT)	FOOT	506,945.0		126,301.0	147,892.0	47,604.0	51,023.0	134,125.0
45100200	CRACK FILLING	POUND	202,778.0		50,520.0	59,157.0	19,042.0	20,409.0	53,650.0
67100100	MOBILIZATION	L SUM	1.0		0.2	0.2	0.2	0.2	0.2
70100420	TRAFFIC CONTROL AND PROTECTION, STANDARD 701411	EACH	4.0		0.0	4.0	0.0	0.0	0.0
70100460	TRAFFIC CONTROL AND PROTECTION, STANDARD 701306	L SUM	1.0		0.3	0.0	0.1	0.2	0.4
70100700	TRAFFIC CONTROL AND PROTECTION, STANDARD 701406	L SUM	1.0		0.0	1.0	0.0	0.0	0.0
70102620	TRAFFIC CONTROL AND PROTECTION, STANDARD 701501	L SUM	1.0		0.5	0.0	0.5	0.0	0.0
78001110	PAINT PAVEMENT MARKING - LINE 4"	FOOT	13,357.0		3,033.0	0.0	4,004.0	2,440.0	3,880.0
X7015005	CHANGEABLE MESSAGE SIGN	CAL DA	28.0		0.0	28.0	0.0	0.0	0.0

\*D5 CRACK & JOINT SEAL 2010-1  
\*\*MCLEAN & PIATT

FILE NAME =	USER NAME = ceorlockjd	DESIGNED - GMR	REVISED -	<b>STATE OF ILLINOIS DEPARTMENT OF TRANSPORTATION</b>	<b>SCHEDULE OF QUANTITIES</b>			F.A. RTE.	SECTION	COUNTY	TOTAL SHEETS	SHEET NO.
ct:\pw\work\p\dot\ceorlockjd\0180411\0570829-shr-schedule.dgn		DRAWN - BBP	REVISED -		SCALE: NONE	SHEET NO. 1 OF 1 SHEETS	STA.	TO STA.	*	**	20	13
		CHECKED -	REVISED -		CONTRACT NO. 70829							
		DATE - 01/12/10	REVISED -		ILLINOIS FED. AID PROJECT							

**HMA PAVEMENT**

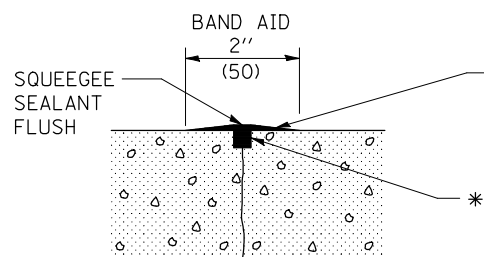
(USE PAY ITEMS : 45100100 CRACK ROUTING (PAVEMENT) AND 45100200 CRACK FILLING)



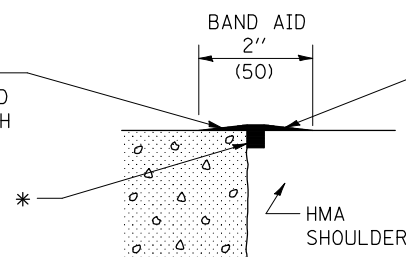
**PCC PAVEMENT**

(USE PAY ITEMS : 45200100 JOINT OR CRACK ROUTING (P.C.C. PAVEMENT & SHOULDER) AND 45200300 JOINT OR CRACK FILLING)

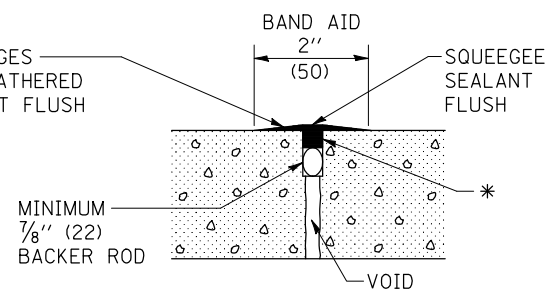
**TRANSVERSE CRACKS AND JOINTS AND CENTERLINE JOINT**



**LONGITUDINAL SHOULDER JOINT**

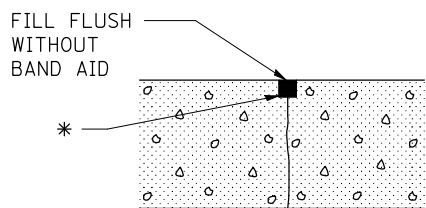


**ANY WIDE LONGITUDINAL JOINT OR CRACK**

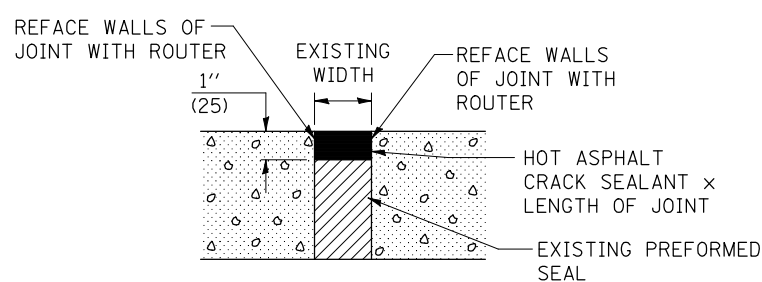


\* HOT ASPHALT CRACK SEALANT APPROX. 3/4 \"

**LONGITUDINAL RANDOM CRACK**



**TRANSVERSE EXPANSION JOINT**



Note: All dimensions are in INCHES (millimeters) unless otherwise shown.

\*D5 CRACK & JOINT SEAL 2010-1  
\*\*MCLEAN & PIATT

**DISTRICT 5 DETAIL NO. 45AAAAAA**

FILE NAME =	USER NAME = ceorlockjd	DESIGNED -	REVISED - 12/06
ct:\pw\work\PWIDOT\CEARLOCKJD\0180411\0670829-sht-details.dgn		DRAWN -	REVISED - 08/07
		CHECKED -	REVISED - 12/08
		DATE -	REVISED -

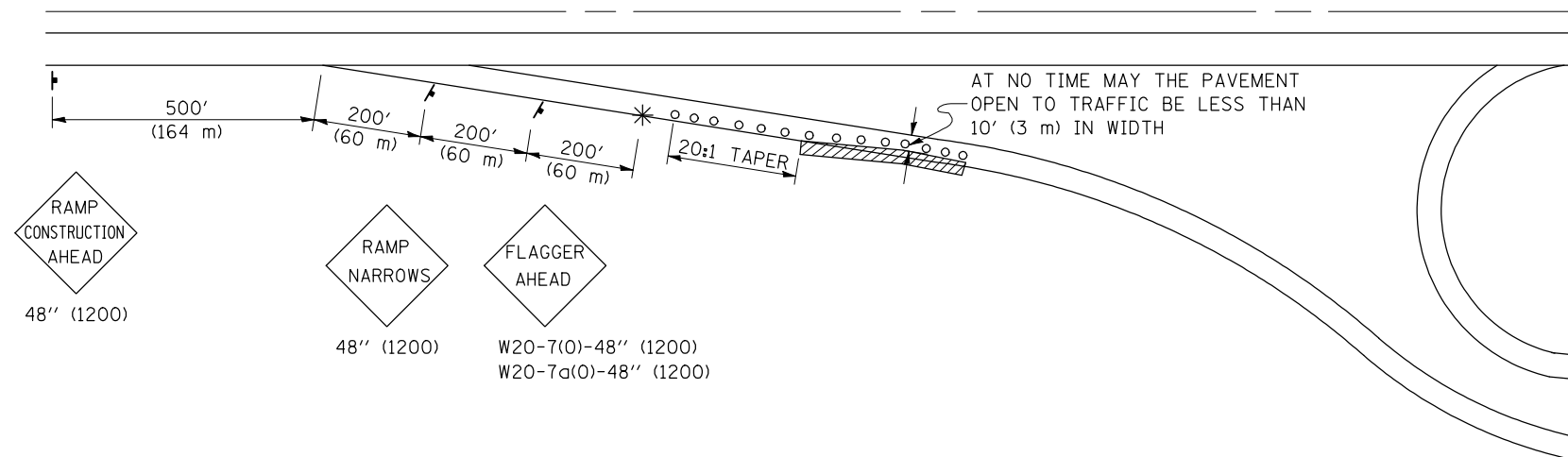
**STATE OF ILLINOIS  
DEPARTMENT OF TRANSPORTATION**

**CRACK AND JOINT SEALING**

SCALE: SHEET NO. 1 OF 1 SHEETS STA. TO STA.

F.A. RTE.	SECTION	COUNTY	TOTAL SHEETS	SHEET NO.
VAR.	*	**	20	14
CONTRACT NO. 70829				
FED. ROAD DIST. NO. ILLINOIS FED. AID PROJECT				

**APPLICATION NO. 1  
DAY OPERATION ONLY  
PARTIAL RAMP CLOSURE**



GENERAL NOTES

CONSTRUCTION OPERATIONS SHALL BE CONFINED TO AN AREA NARROW ENOUGH THAT A MINIMUM OF 10' (3 m) OF PAVEMENT SHALL BE OPEN TO TRAFFIC AT ALL TIMES.

FULL WIDTH PAVEMENT ON THE RAMPS SHALL BE OPEN TO TRAFFIC AT NIGHT.

WHEN NO WORK IS BEING PERFORMED, THE FLAGGER WILL NOT BE REQUIRED. IF THE FLAGGER IS NOT PRESENT, THE FLAGGER SIGNS SHALL BE REMOVED OR COVERED.

ALL SIGNS SHALL BE POST MOUNTED IF WORK IN THE AREA EXCEEDS FOUR DAYS OF DAYTIME OPERATIONS.

LONGITUDINAL DIMENSIONS MAY BE ADJUSTED SLIGHTLY TO FIT FIELD CONDITIONS.

ALL VEHICLES, EQUIPMENT, WORKERS (EXCEPT FLAGGER) AND THEIR ACTIVITIES ARE RESTRICTED AT ALL TIMES TO ONE SIDE OF THE PAVEMENT UNLESS OTHERWISE AUTHORIZED BY THE DISTRICT ENGINEER.

SYMBOLS

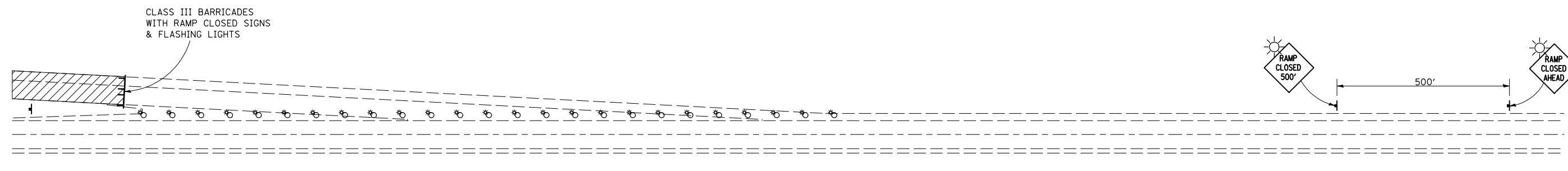
- (APPLICATION NO. 1) TYPE I OR II BARRICADES OR DRUMS @ 50' (15 m) CTS.
- ⊗ (APPLICATION NO. 2) TYPE I OR II BARRICADES OR DRUMS @ 25' (7.5 m) CTS. W/STEADY BURNING LIGHTS
- \* (APPLICATION NO. 1) FLAGGER PLACED AS DIRECTED BY THE ENGINEER
- † SIGN ON PORTABLE OR PERMANENT SUPPORT
- ▨ WORK AREA

TYPICAL APPLICATIONS

- PAVEMENT PATCHING
- PIPE UNDERDRAINS
- HMA RESURFACING

**Traffic Control for all ramps shall be in accordance with the appropriate application of plan detail TRAFFIC CONTROL FOR RAMPS and will not be paid for separately, but shall be included in the contract lump sum prices for Traffic Control and Protection, Standard 701401 and Traffic Control and Protection, Standard 701406.**

**APPLICATION NO. 2  
RAMP CLOSURE**



GENERAL NOTES

STEADY BURN LIGHTS ARE NOT REQUIRED FOR DAYTIME OPERATIONS.

CONTACT THE DISTRICT TRAFFIC OPERATIONS ENGINEER AT 217-465-4181, ONE WEEK PRIOR TO CLOSING THE RAMP.

Note: All dimensions are in INCHES (millimeters) unless otherwise shown.

\*D5 CRACK & JOINT SEAL 2010-1  
\*\*MCLEAN & PIATT

**DISTRICT 5 DETAIL NO. 70103710**

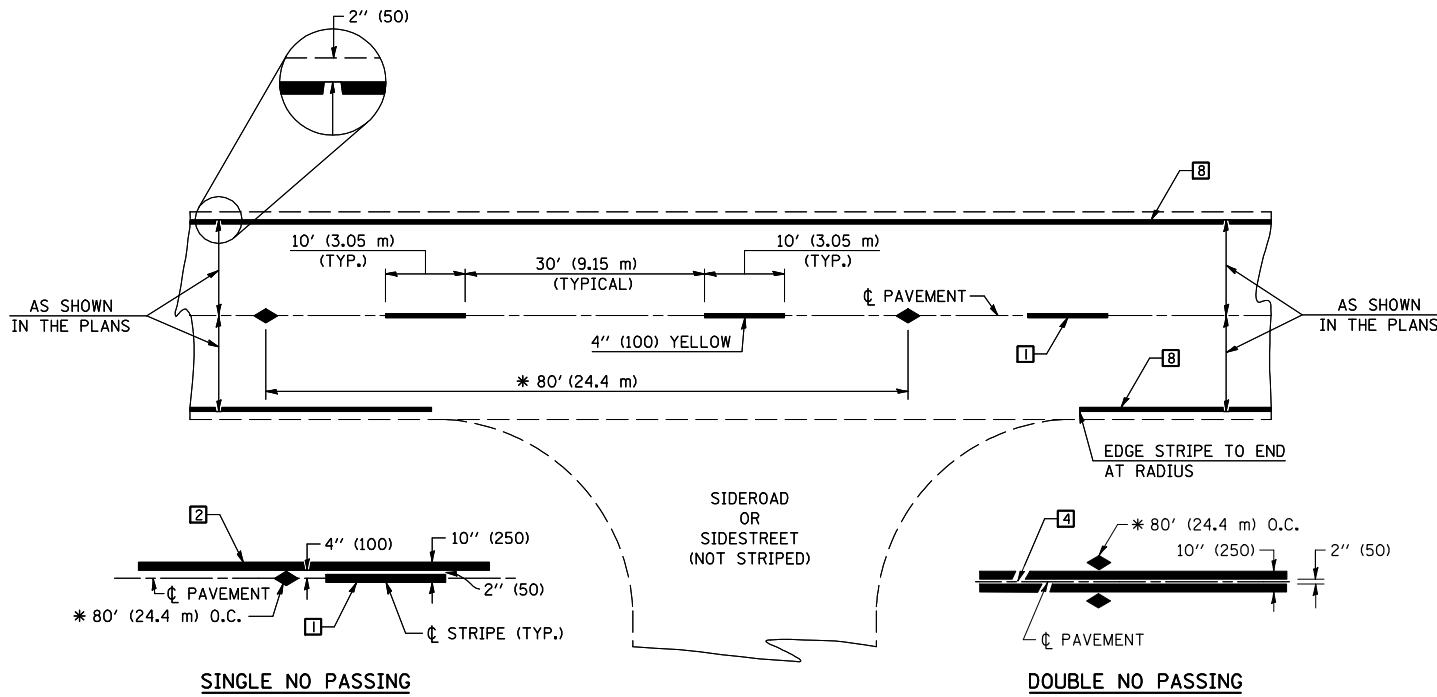
FILE NAME =	USER NAME = ceorlockjd	DESIGNED -	REVISED - 11/06
ce:\pwork\pwork\PWIDOT\CEARLOCKJD\0180411\0670829-sht-details.dgn		DRAWN -	REVISED -
	PLOT SCALE = 40.0000' / IN.	CHECKED -	REVISED -
	PLOT DATE = 1/28/2010	DATE -	REVISED -

**STATE OF ILLINOIS  
DEPARTMENT OF TRANSPORTATION**

**TRAFFIC CONTROL FOR RAMPS**

SCALE: SHEET NO. 1 OF 1 SHEETS STA. TO STA.

F.A. RTE.	SECTION	COUNTY	TOTAL SHEETS	SHEET NO.
VAR.	*	**	20	15
FED. ROAD DIST. NO. ILLINOIS FED. AID PROJECT			CONTRACT NO. 70829	



\* REDUCE TO 40' (12.2 m) O.C. ON CURVES WITH POSTED OR ADVISORY SPEEDS OF 45 mph (70 km/h) OR LESS.

**TWO LANE/TWO WAY**

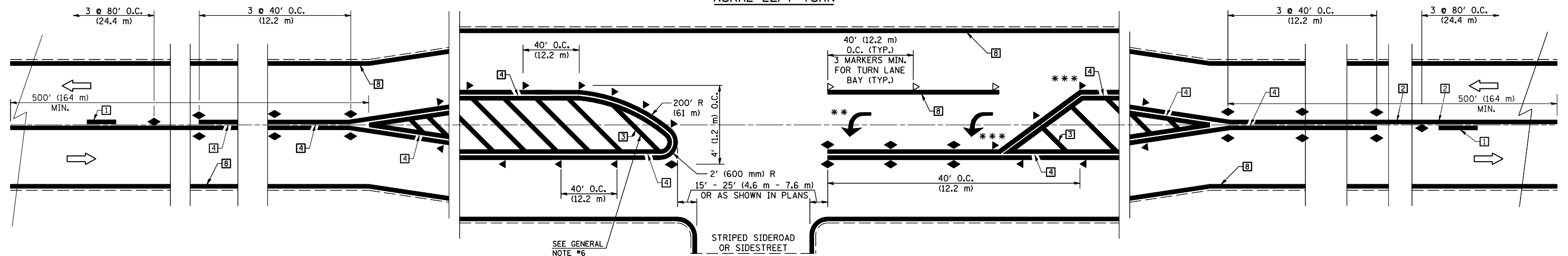
**TYPICAL PAVEMENT MARKING LEGEND**

- 1 4" (100) SKIP-DASH (YELLOW)
- 2 4" (100) SOLID (YELLOW)
- 3 12" (300) DIAGONAL (YELLOW)
- 4 4" (100) DOUBLE YELLOW (NARROW)
- 5 RESERVED
- 6 RESERVED
- 7 4" (100) SKIP-DASH (WHITE)
- 8 4" (100) SOLID (WHITE)
- 9 12" (300) DIAGONAL (WHITE)
- 10 6" (150) SOLID (WHITE)
- 11 24" (600) STOP BAR (WHITE)
- 12 8" (200) SOLID (WHITE)
- 13 4" (100) LANE LINE EXTENSIONS (WHITE)
- 14 4" (100) PARKING WHITE

**TYPICAL PAVEMENT MARKERS LEGEND**

- ◆ TWO-WAY AMBER MARKER
- ▶ ONE-WAY AMBER MARKER
- ▷ ONE-WAY CRYSTAL MARKER

**RURAL LEFT TURN**



\*\*\* REDUCE SPACING IF NECESSARY TO ASSURE MARKERS AT CORNER POINTS.

\*\* TURN ARROWS SHALL BE PLACED AS SHOWN ON SHEET #2.

Note: All dimensions are in INCHES (millimeters) unless otherwise shown.

FILE NAME =	USER NAME = ceorlockjd	DESIGNED -	REVISED - 11/06
ce:\pwwork\pwidot\cearlockjd\0180411\0570829-sht-details.dgn		DRAWN -	REVISED - 09/2009 - KJT
	PLOT SCALE = 40.0000' / IN.	CHECKED -	REVISED -
	PLOT DATE = 1/28/2010	DATE -	REVISED -

**STATE OF ILLINOIS  
DEPARTMENT OF TRANSPORTATION**

**PAVEMENT MARKING AND MARKERS  
(RURAL & URBAN APPLICATIONS)**

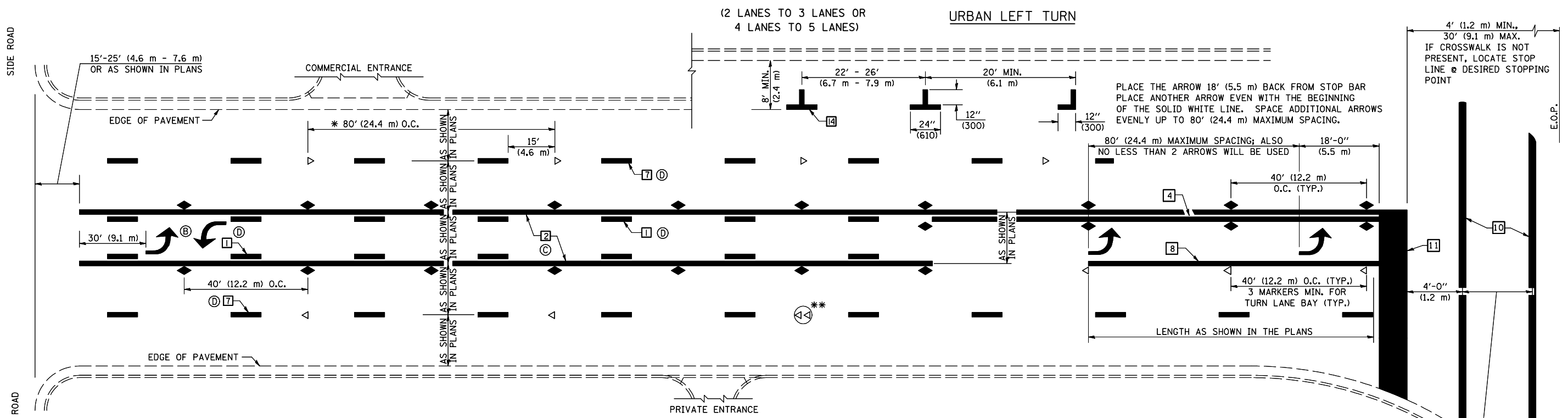
SCALE: SHEET NO. 1 OF 4 SHEETS STA. TO STA.

**DISTRICT 5 DETAIL NO. 7800AAA**

F.A. RTE.	SECTION	COUNTY	TOTAL SHEETS	SHEET NO.
VAR.	*	**	20	16
CONTRACT NO. 70829				
FED. ROAD DIST. NO. ILLINOIS FED. AID PROJECT				

\*D5 CRACK & JOINT SEAL 2010-1  
\*\*MCLEAN & PIATT

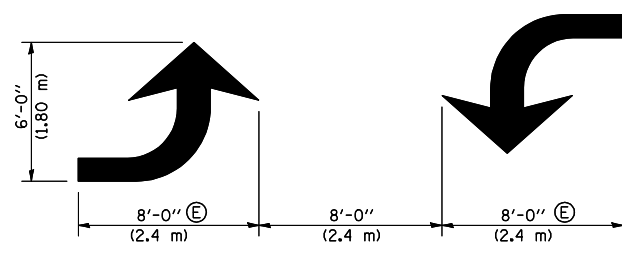
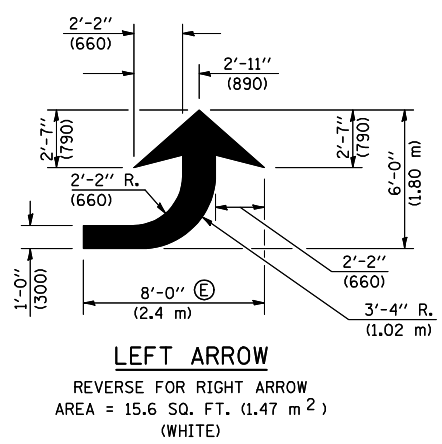




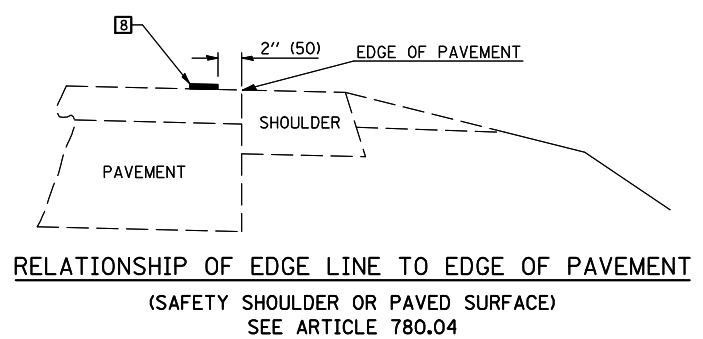
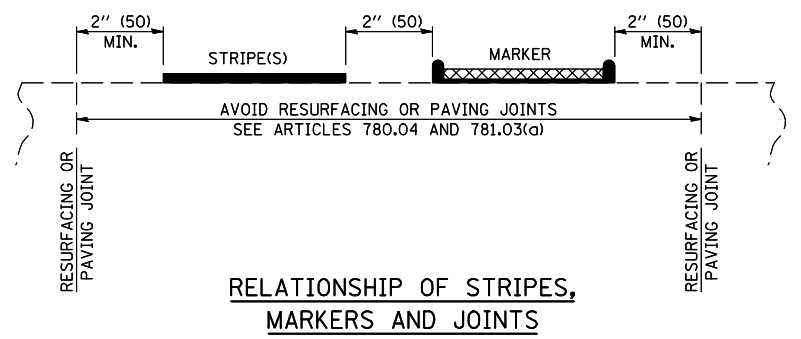
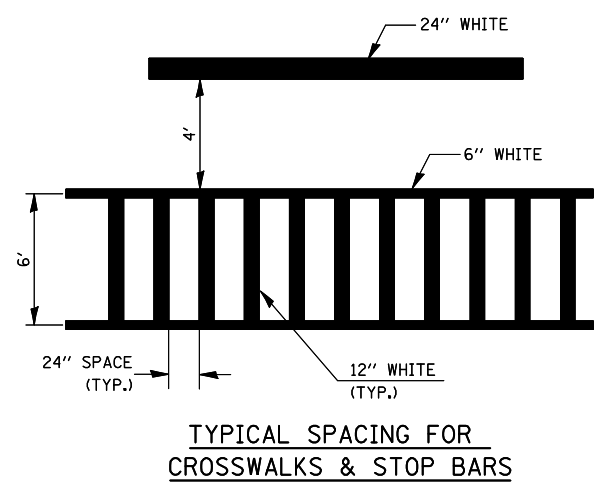
\* REDUCE TO 40 FEET (12.2 METERS) ON CENTER ON CURVES WHERE ADVISORY SPEEDS ARE 10 MPH (15 km/h) LOWER THAN POSTED SPEEDS.

\*\* DOUBLE LANE LINE MARKERS SHALL BE SPECIFIED AND SPACED AS SHOWN IN HIGHWAY STANDARD 781001 FOR MULTI-LANE DIVIDED AND UNDIVIDED HIGHWAYS.

- GENERAL NOTES:**
- ⓑ TURN ARROW PAIRS SHALL BE PLACED AT 250' (75 m) INTERVALS AND SHALL BE EVENLY SPACED BETWEEN BOTH ENDS OF THE BIDIRECTIONAL LEFT TURN LANE.
  - ⓒ THE SOLID YELLOW PAVEMENT MARKINGS [2] SHOULD GENERALLY START OR END NEAR THE RADIUS POINT OF EACH STREET RETURN EXCEPT WHERE ONE OR BOTH ENDS WOULD INCLUDE STOP BARS.
  - ⓓ THE SKIP-DASH PAVEMENT MARKINGS [1] OR [7] SHOULD BE CENTERED BETWEEN BOTH ENDS OF EACH CITY BLOCK AND SHALL BE PLACED SO THEY LINE UP ACROSS FROM EACH OTHER. SEE EXAMPLE ON SHEET 2 OF 3.
  - ⓔ USE LARGE ARROW SIZE FOR BOTH RURAL AND URBAN LOCATIONS. (SEE LAST PAGE OF SECTION 780x FOR SYMBOLS TABLE)



**BLOOMINGTON-NORMAL CITY LIMITS ONLY**



4' (1.2 m) MIN., 30' (9.1 m) MAX.  
 IF CROSSWALK IS NOT PRESENT, LOCATE STOP LINE @ DESIRED STOPPING POINT

CROSSWALK WIDTH 6'-0" (1.8 m) OR AS SHOWN IN THE PLANS

Note: All dimensions are in INCHES (millimeters) unless otherwise shown.

FILE NAME =	USER NAME = ceorlockjd	DESIGNED -	REVISED - 11/06
ce:\pw\work\PIWIDOT\CEARLOCKJD\0180411\0670829-sht-details.dgn		DRAWN -	REVISED - 09/2009 - KJT
	PLOT SCALE = 40.0000' / IN.	CHECKED -	REVISED -
	PLOT DATE = 1/28/2010	DATE -	REVISED -

**STATE OF ILLINOIS  
 DEPARTMENT OF TRANSPORTATION**

**PAVEMENT MARKING AND MARKERS  
 (RURAL & URBAN APPLICATIONS)**

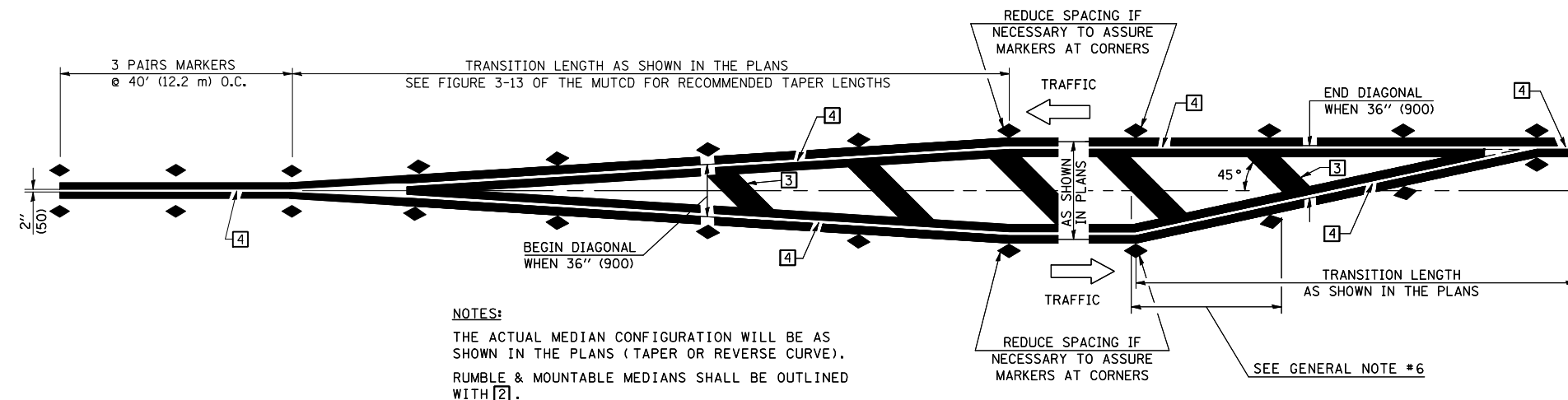
SCALE: SHEET NO. 2 OF 4 SHEETS STA. TO STA.

\*D5 CRACK & JOINT SEAL 2010-1  
 \*\*MCLEAN & PIATT

**DISTRICT 5 DETAIL NO. 7800AAA**

F.A. RTE.	SECTION	COUNTY	TOTAL SHEETS	SHEET NO.
VAR.	*	**	20	17

CONTRACT NO. 70829  
 FED. ROAD DIST. NO. ILLINOIS FED. AID PROJECT

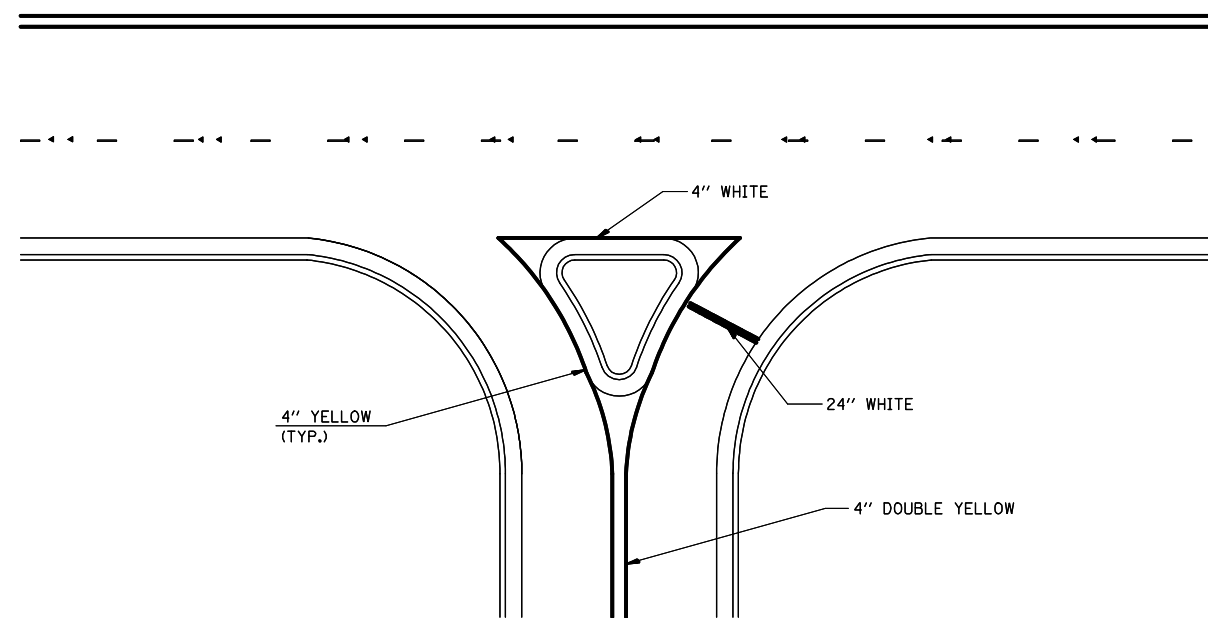


**NOTES:**  
 THE ACTUAL MEDIAN CONFIGURATION WILL BE AS SHOWN IN THE PLANS (TAPER OR REVERSE CURVE).  
 RUMBLE & MOUNTABLE MEDIANS SHALL BE OUTLINED WITH [2].

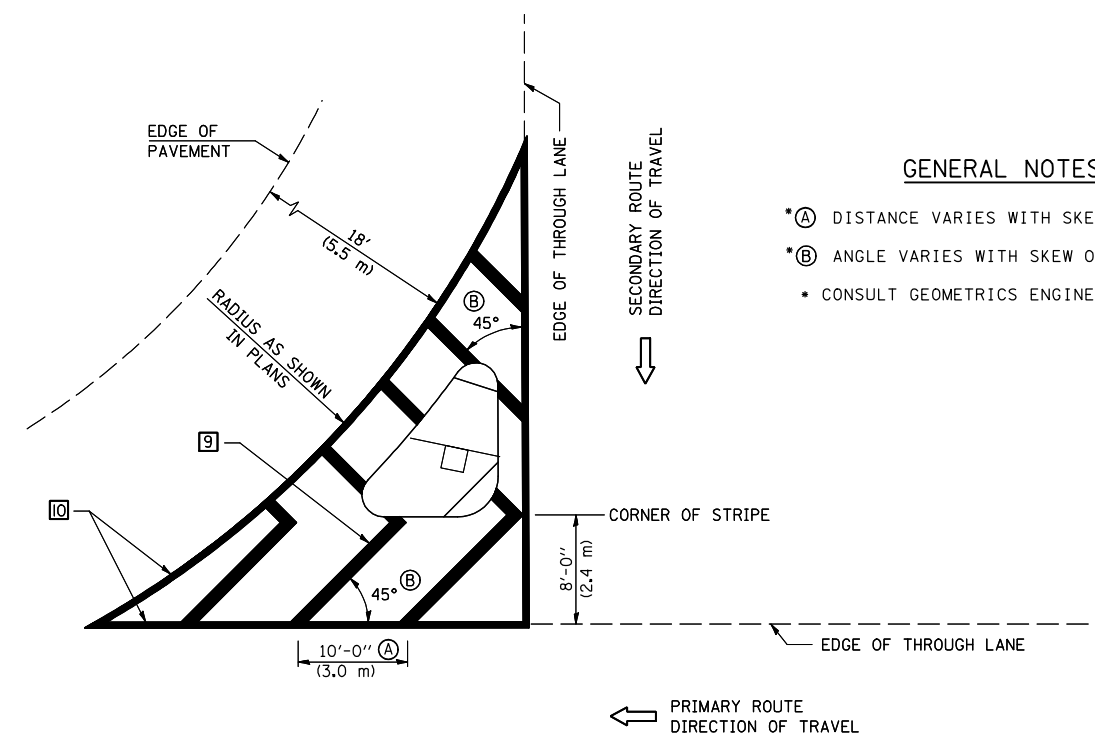
**TYPICAL MEDIAN TRANSITIONS**

**GENERAL NOTES**

1. WHEN MEDIANS ARE PRESENT, PAVEMENT MARKINGS ARE TO BE PLACED ADJACENT TO MEDIANS.
2. SOME OF THE INFORMATION INCLUDED WITH THIS DETAIL MAY NOT BE APPLICABLE TO THIS IMPROVEMENT.
3. PAVEMENT MARKINGS ARE TO BE EXTENDED THROUGH OMISSIONS WHEN APPLICABLE.
4. A STRIPING KEY IS AVAILABLE ELSEWHERE AND SHALL BE SHOWN WHERE THE QUANTITIES ARE LISTED.
5. FINAL PAVEMENT MARKINGS SHALL BE IN PLACE PRIOR TO PLACING ANY RAISED REFLECTIVE PAVEMENT MARKERS.
6. THE FOLLOWING CRITERIA SHALL BE USED FOR SELECTING THE DIAGONAL PAVEMENT MARKING SPACING,  
 < 30 MPH USE 15' (< 50 km/h USE 4.5 m)  
 30-45 MPH USE 20' (50-75 km/h USE 6.0 m)  
 > 45 MPH USE 30' (> 75 km/h USE 9.0 m)



**RIGHT IN - RIGHT OUT ACCESS**



**ISLAND**

**GENERAL NOTES**

- \*A DISTANCE VARIES WITH SKEW OF INTERSECTION.
- \*B ANGLE VARIES WITH SKEW OF INTERSECTION.
- CONSULT GEOMETRICS ENGINEER

Note: All dimensions are in INCHES (millimeters) unless otherwise shown.

FILE NAME =	USER NAME = ceorlockjd	DESIGNED -	REVISED - 11/06
ce:\pw\work\PWIDOT\CEARLOCKJD\0180411\0670829-sht-details.dgn		DRAWN -	REVISED - 09/2009 - KJT
	PLOT SCALE = 40.0000' / IN.	CHECKED -	REVISED -
	PLOT DATE = 1/28/2010	DATE -	REVISED -

**STATE OF ILLINOIS  
 DEPARTMENT OF TRANSPORTATION**

**PAVEMENT MARKING AND MARKERS  
 (RURAL & URBAN APPLICATIONS)**

SCALE: SHEET NO. 3 OF 4 SHEETS STA. TO STA.

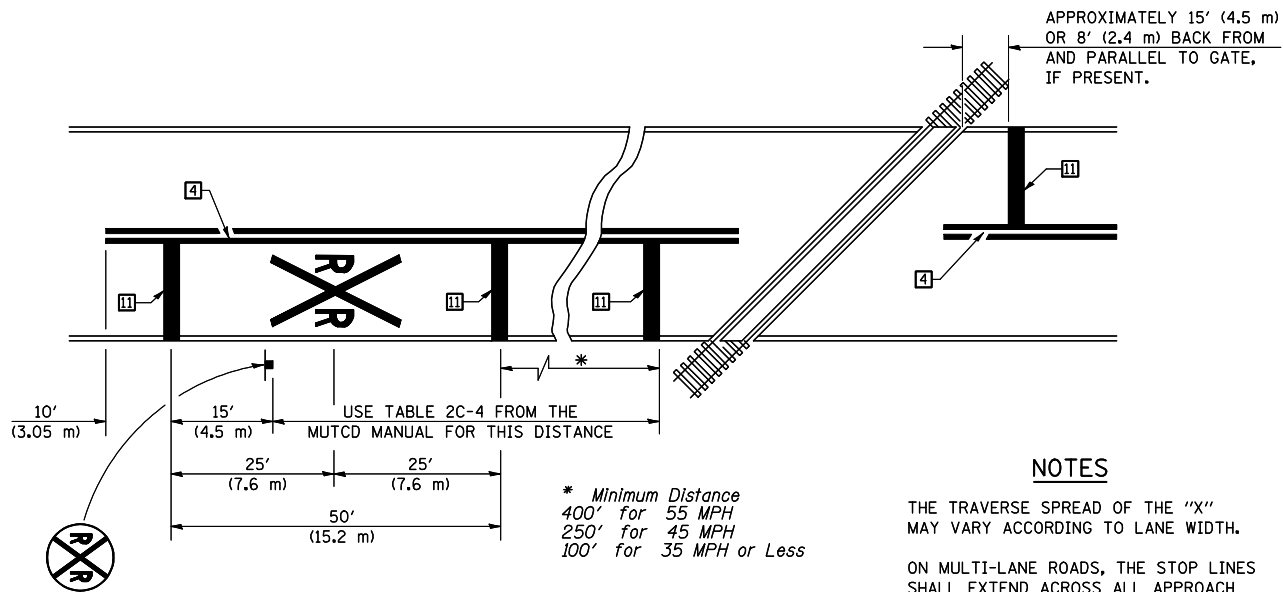
\*D5 CRACK & JOINT SEAL 2010-1  
 \*\*MCLEAN & PIATT

**DISTRICT 5 DETAIL NO. 7800AAA**

F.A. RTE.	SECTION	COUNTY	TOTAL SHEETS	SHEET NO.
VAR.	*	**	20	18
FED. ROAD DIST. NO. ILLINOIS FED. AID PROJECT			CONTRACT NO. 70829	

RAILROAD CROSSING WITH INTERCONNECT ONLY

RAILROAD CROSSING WITH INTERCONNECT AND PRE-SIGNALS



PAVEMENT MARKINGS AT RAILROAD-HIGHWAY GRADE CROSSING

NOTES

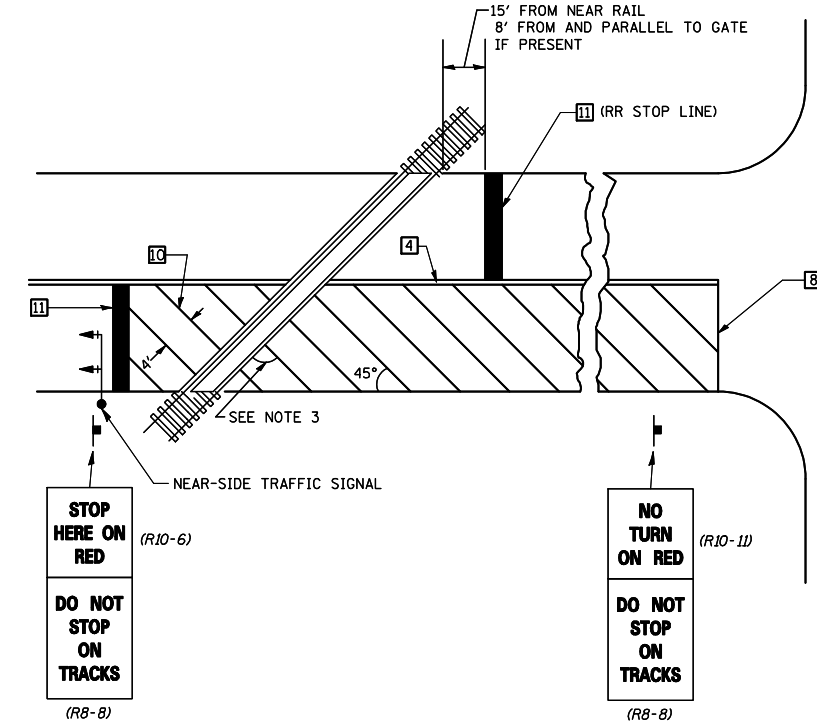
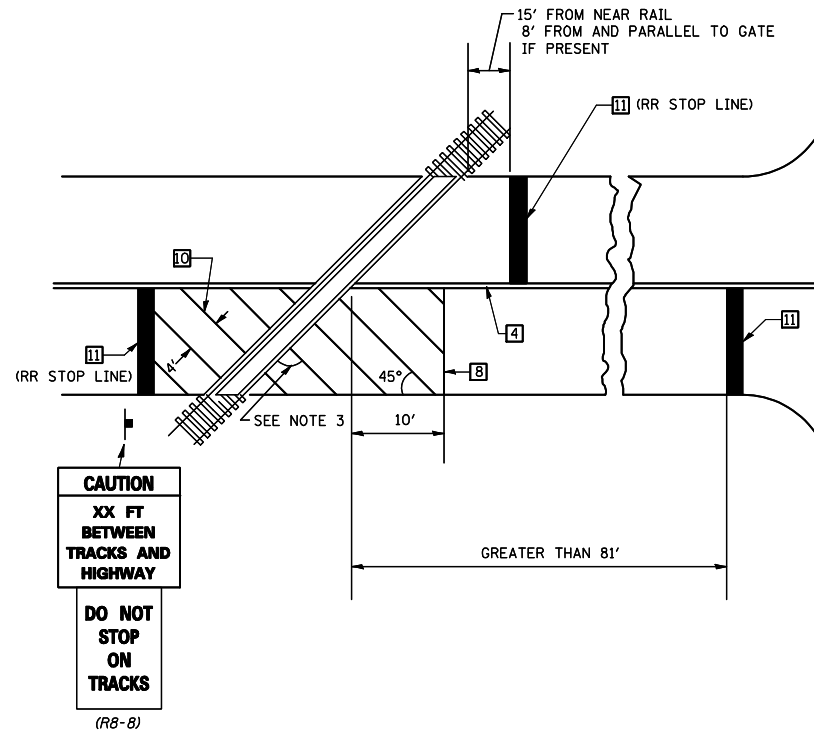
APPROXIMATELY 15' (4.5 m) OR 8' (2.4 m) BACK FROM AND PARALLEL TO GATE, IF PRESENT.

THE TRAVERSE SPREAD OF THE "X" MAY VARY ACCORDING TO LANE WIDTH.

ON MULTI-LANE ROADS, THE STOP LINES SHALL EXTEND ACROSS ALL APPROACH LANES AND SEPARATE RXR SYMBOLS SHALL BE PLACED ADJACENT TO EACH OTHER IN EACH LANE.

WHEN THE PAVEMENT MARKING SYMBOL IS USED, A PORTION OF THE SYMBOL SHOULD BE LOCATED DIRECTLY ADJACENT TO THE ADVANCE WARNING SIGN (W10-1) AS PLACED BY TABLE II-1, CONDITION B OF THE MUTCD.

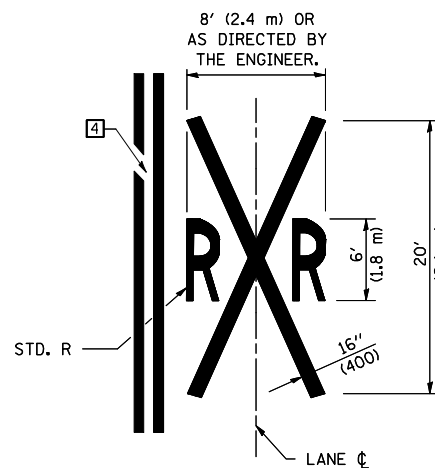
\* Minimum Distance  
400' for 55 MPH  
250' for 45 MPH  
100' for 35 MPH or Less



SUPPLEMENTAL PAVEMENT MARKING TREATMENT FOR RAILROAD-HIGHWAY GRADE CROSSING

GENERAL NOTES

- SUPPLEMENTAL PAVEMENT MARKINGS TO BE INSTALLED ONLY ON APPROACHES TO INTERSECTIONS CONTROLLED BY TRAFFIC SIGNALS WHICH ARE INTERCONNECTED WITH THE RAILROAD WARNING SIGNALS.
- EXTEND PAVEMENT MARKINGS TO THE INTERSECTION ONLY WHERE NEAR-SIDE TRAFFIC SIGNALS ARE USED.
- WHERE THE ANGLE BETWEEN THE DIAGONAL PAVEMENT MARKINGS AND THE TRACK WOULD BE LESS THAN 20°, THE PAVEMENT MARKINGS SHOULD BE PLACED IN THE OPPOSITE DIRECTION FROM THAT SHOWN.



Note: All dimensions are in INCHES (millimeters) unless otherwise shown.

FILE NAME =	USER NAME = cealockjd	DESIGNED -	REVISED - 11/06
ce:\pw\work\PWIDOT\CEARLOCKJD\0180411\0670829-sht-details.dgn		DRAWN -	REVISED - 09/2009 - KJT
	PLOT SCALE = 40.0000' / IN.	CHECKED -	REVISED -
	PLOT DATE = 1/28/2010	DATE -	REVISED -

STATE OF ILLINOIS  
DEPARTMENT OF TRANSPORTATION

PAVEMENT MARKING AND MARKERS  
(RURAL & URBAN APPLICATIONS)

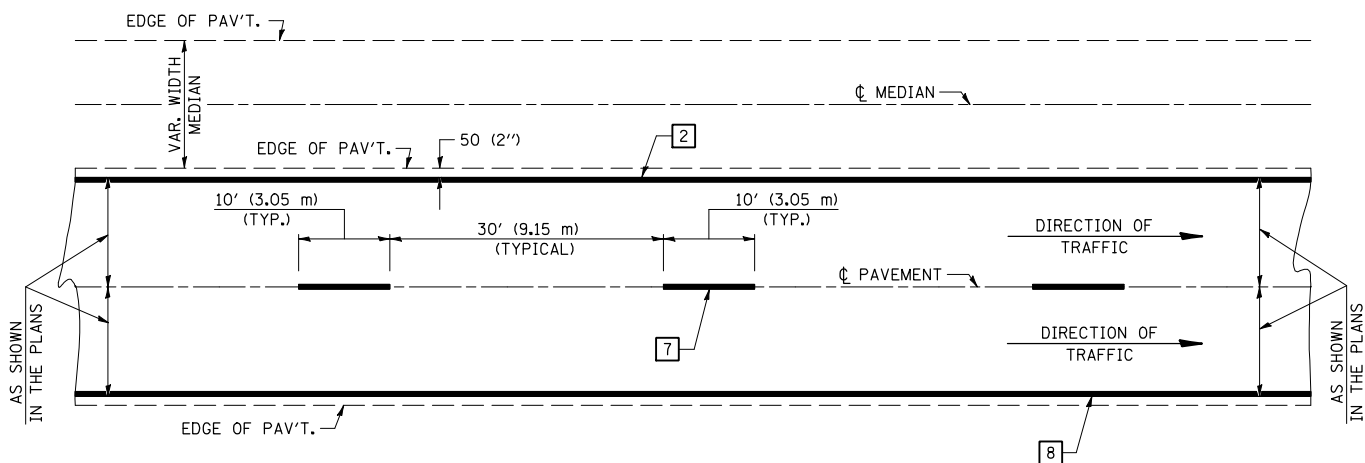
SCALE: SHEET NO. 4 OF 4 SHEETS STA. TO STA.

\*D5 CRACK & JOINT SEAL 2010-1  
\*\*MCLEAN & PIATT

DISTRICT 5 DETAIL NO. 7800AAAA

F.A. RTE.	SECTION	COUNTY	TOTAL SHEETS	SHEET NO.
VAR.	*	**	20	19
CONTRACT NO. 70829			ILLINOIS FED. AID PROJECT	

**CENTERLINE INTERSTATE OR MULTI-LANE TWO WAY DIVIDED HIGHWAY**

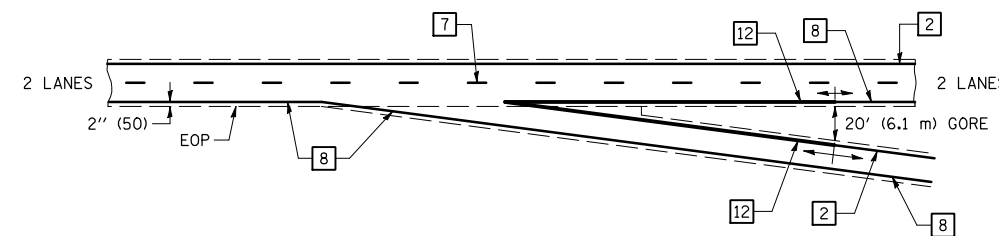


NOTE: PAVEMENT MARKINGS ARE TO BE EXTENDED THROUGH OMISSIONS WHEN APPLICABLE.

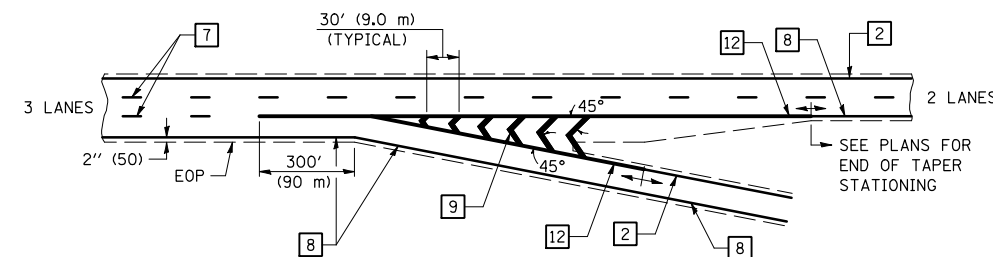
NOTE: SEE ARTICLES 780.04 & 781.03 FOR LOCATION OF STRIPES AND MARKERS RELATIVE TO EDGES OR JOINTS.

FOR RAISED REFLECTIVE PAVEMENT MARKERS, REFER TO STANDARD 781001.

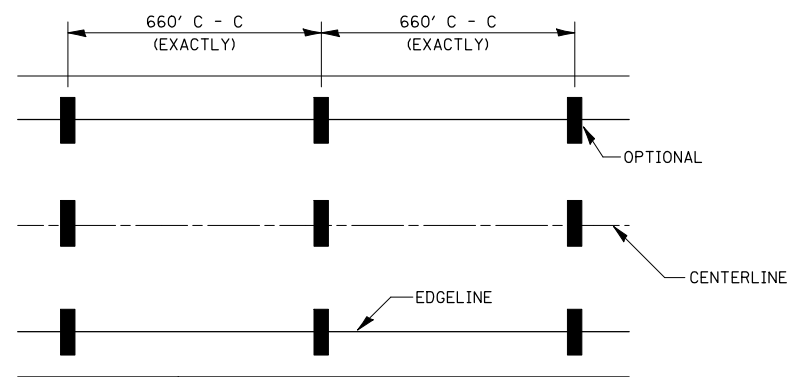
**TYPICAL EXIT RAMP TERMINAL**



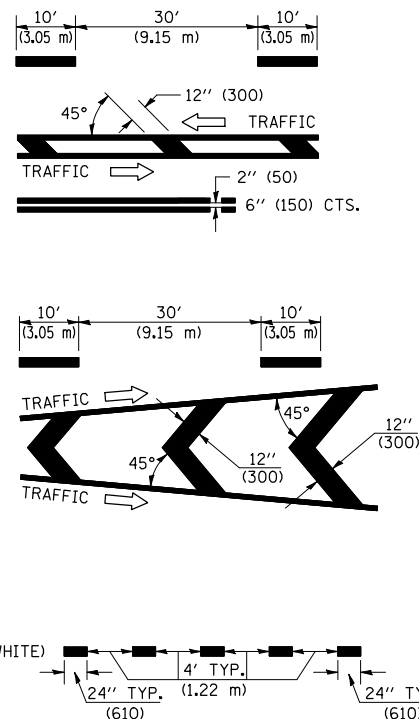
**EXIT RAMP TERMINAL with EXCLUSIVE (auxiliary) LANE**



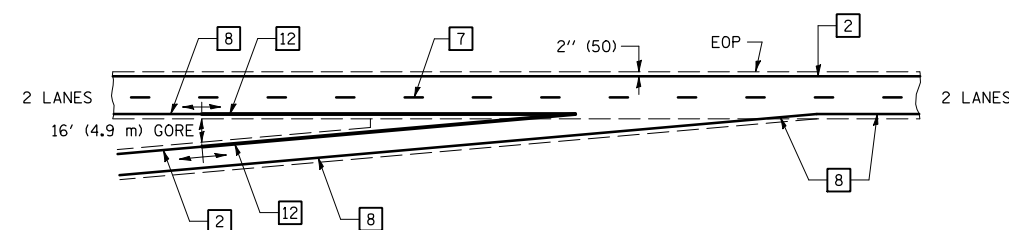
**TYPICAL PAVEMENT MARKING LEGEND**



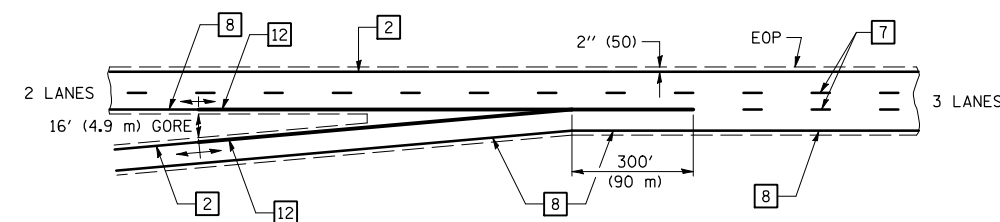
- 1 4" (100) SKIP-DASH (YELLOW)
- 2 4" (100) SOLID (YELLOW)
- 3 12" (300) DIAGONAL (YELLOW)
- 4 4" (100) DOUBLE YELLOW (NARROW)
- 5 RESERVED
- 6 RESERVED
- 7 4" (100) SKIP-DASH (WHITE)
- 8 4" (100) SOLID (WHITE)
- 9 12" (300) DIAGONAL (WHITE)
- 10 6" (150) SOLID (WHITE)
- 11 24" (600) STOP BAR (WHITE)
- 12 8" (200) SOLID (WHITE)
- 13 4" (100) LANE LINE EXTENSIONS (WHITE)



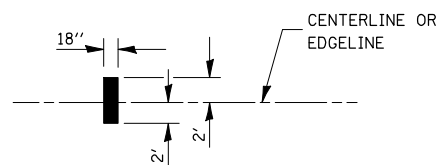
**TYPICAL ENTRANCE RAMP TERMINAL**



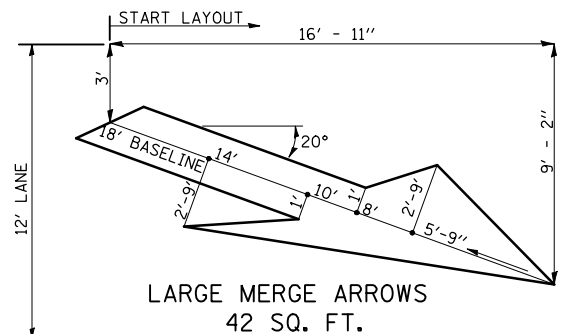
**ENTRANCE RAMP TERMINAL with EXCLUSIVE LANE**



IT WILL BE NECESSARY TO HAVE A REPRESENTATIVE OF THE STATE POLICE PRESENT SO THAT THE ACCURACY OF MEASUREMENT CAN BE ATTESTED TO IN COURT.



**AERIAL SPEED CHECK ZONES**



Note: All dimensions are in INCHES (millimeters) unless otherwise shown.

FILE NAME =	USER NAME = ceorlockjd	DESIGNED -	REVISED - 11/06
ce:\pwwork\pwwid01\CEARLOCKJD\0180411\0670829\shd-details.dgn		DRAWN -	REVISED -
PLOT SCALE = 40.0000' / IN.		CHECKED -	REVISED -
PLOT DATE = 1/28/2010		DATE -	REVISED -

**STATE OF ILLINOIS  
DEPARTMENT OF TRANSPORTATION**

**PAVEMENT MARKING (INTERSTATE & MULTI-LANE APPLICATIONS)**

SCALE: SHEET NO. 1 OF 1 SHEETS STA. TO STA.

•D5 CRACK & JOINT SEAL 2010-1  
\*\*MCLEAN & PIATT

**DISTRICT 5 DETAIL NO. 7800BBBB**

F.A. RTE.	SECTION	COUNTY	TOTAL SHEETS	SHEET NO.
VAR.	*	**	20	20
CONTRACT NO. 70829				
FED. ROAD DIST. NO. ILLINOIS FED. AID PROJECT				