

STATE OF ILLINOIS
DEPARTMENT OF TRANSPORTATION
DIVISION OF HIGHWAYS

**PROPOSED
HIGHWAY PLANS**

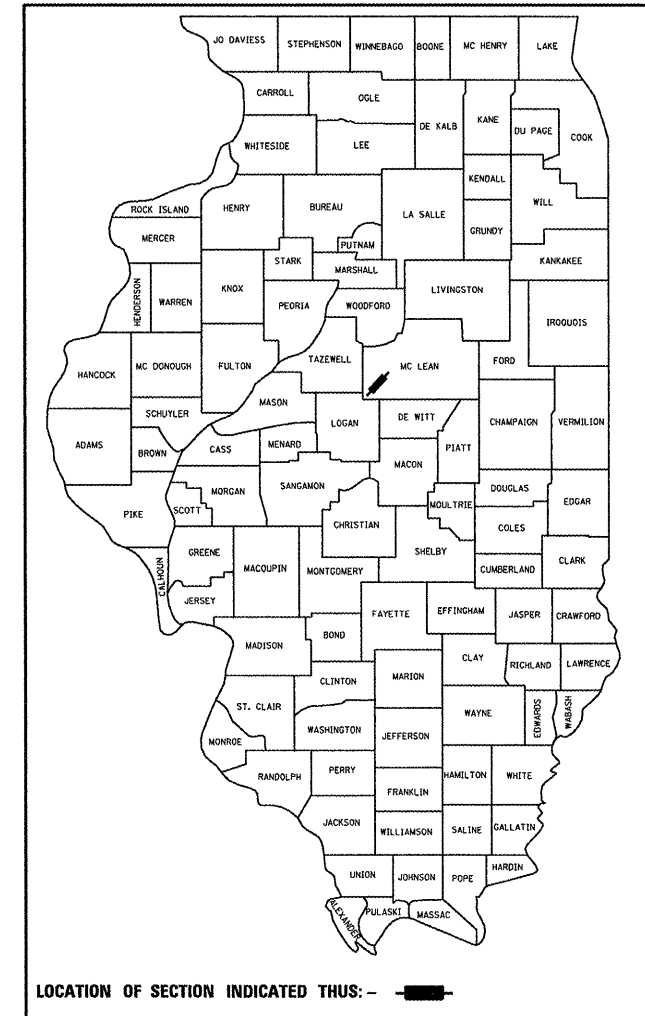
F.A.I. ROUTE 55 / (I-55)
SECTION 57(8,9,10)RS-1
PROJECT: IM-055-4(171)142
RESURFACING (INT-1ST) COLD MILLING
MCLEAN COUNTY

C-95-015-10

LOGAN COUNTY LINE TO I-74

F.A.I. RTE.	SECTION	COUNTY	TOTAL SHEETS	SHEET NO.
55	57(8,9,10)RS-1	MCLEAN	23	1
		ILLINOIS	CONTRACT NO. 70845	

D-95-015-10



FOR DETAILED LOCATION MAP, SEE SHEET NO. 2
FOR INDEX OF SHEETS, SEE SHEET NO. 3
FOR SUMMARY OF QUANTITIES, SEE SHEET NO. 5

NOTE:
SEE GENERAL NOTES FOR STRUCTURE INFORMATION

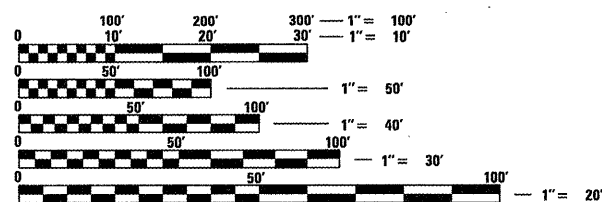
CURRENT TRAFFIC DATA

F.A.I. ROUTE 55

	LEG "A"	LEG "B"	LEG "C"
2009 ADT =	20,200	21,500	22,100
PV % =	65.1	66.9	67.3
SU % =	4.1	3.6	3.5
MU % =	30.8	29.5	29.2

DESIGN DESIGNATION

INTERSTATE



FULL SIZE PLANS HAVE BEEN PREPARED USING STANDARD ENGINEERING SCALES. REDUCED SIZED PLANS WILL NOT CONFORM TO STANDARD SCALES. IN MAKING MEASUREMENTS ON REDUCED PLANS, THE ABOVE SCALES MAY BE USED.

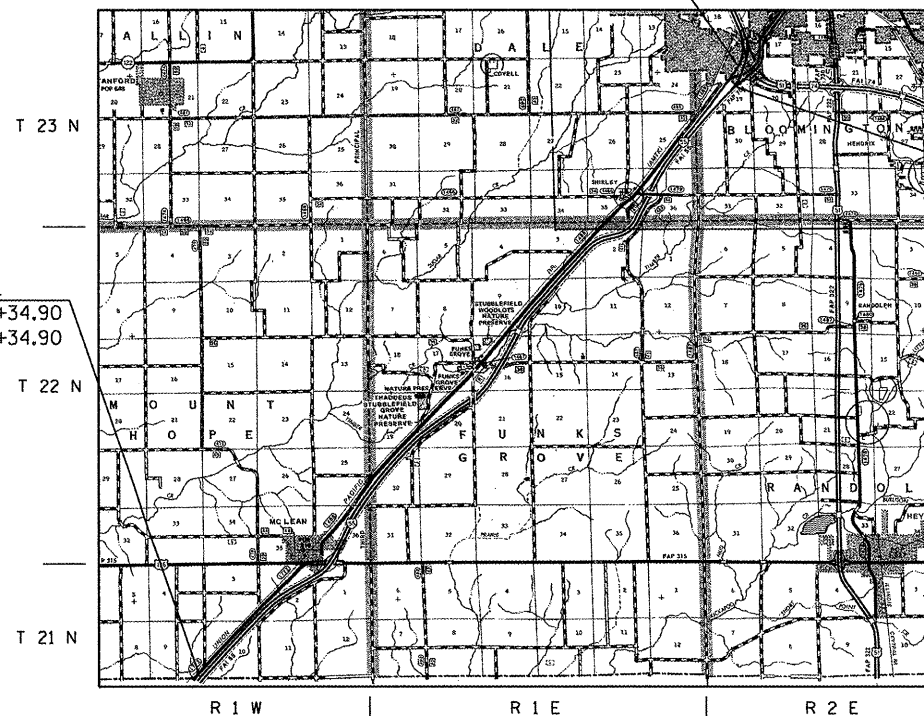
J.U.L.I.E.
JOINT UTILITY LOCATION INFORMATION FOR EXCAVATION
1-800-892-0123
OR 811

TOWNSHIPS: MOUNT HOPE, FUNKS GROVE, DALE, BLOOMINGTON

PROJECT ENGINEER: JASON STULTS
SQUAD LEADER: GREG EAGLIN
217-465-4181

CONTRACT NO. 70845

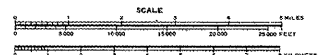
SECTION 57(8,9,10)RS-1
ENDS S.B. STA. 659+50.14



SECTION 57(8,9,10)RS-1
BEGINS N.B. STA. 587+34.90
BEGINS S.B. STA. 587+34.90

SECTION 57(8,9,10)RS-1
ENDS N.B. STA. 647+48.69

SEE SHEET 2 FOR
STATION EQUATIONS
AND OMISSIONS



TOTAL LENGTH OF SECTION & PROJECT = 77,328.64 FT. = 14.646 MILES
NET LENGTH OF SECTION & PROJECT = 76,592.24 FT. = 14.506 MILES
(NOTE: LENGTHS ARE CALCULATED ALONG NORTHBOUND LANE)

STATE OF ILLINOIS
DEPARTMENT OF TRANSPORTATION
DIVISION OF HIGHWAYS

SUBMITTED 2/3 20 10
Jason W. Cowser
DEPUTY DIRECTOR OF HIGHWAYS, REGION ENGINEER

March 19 20 10
Scott E. Stett, P.E.
ACTING ENGINEER OF DESIGN AND ENVIRONMENT

March 19 20 10
Christine M. Reed
DIRECTOR OF HIGHWAYS, CHIEF ENGINEER

PRINTED BY THE AUTHORITY
OF THE STATE OF ILLINOIS