

STATE OF ILLINOIS
DEPARTMENT OF TRANSPORTATION
DIVISION OF HIGHWAYS

**PROPOSED
HIGHWAY PLANS**

F.A.I. ROUTE 74 (I-74)
SECTION D5 INLAY 2010

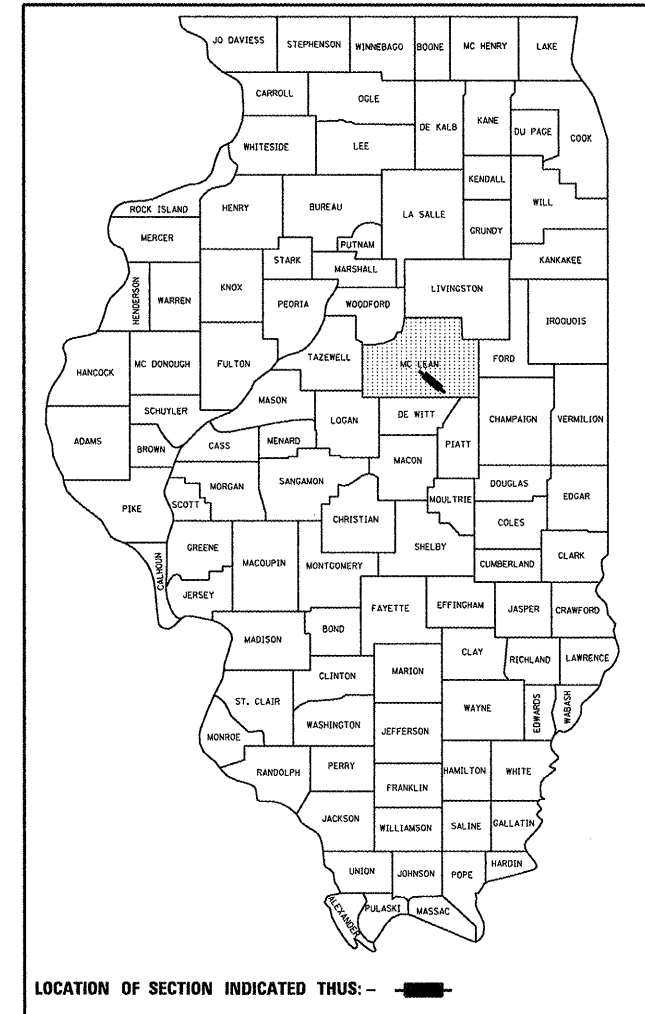
MCLEAN COUNTY

C-95-020-10
RESURFACING

LITTLE KICKAPOO CR TO KICKAPOO CR WEST OF DOWNS &
2.9 MI EAST OF DOWNS TO NORTH FORK SALT CREEK

F.A.I. RTE.	SECTION	COUNTY	TOTAL SHEETS	SHEET NO.
74	D5 INLAY 2010	MCLEAN	10	1
		ILLINOIS	CONTRACT NO. 70846	

D-95-020-10

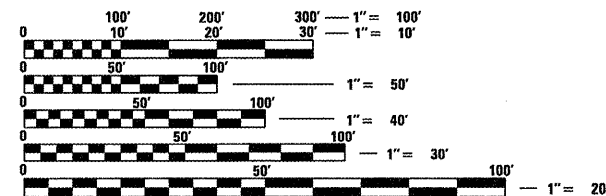


FOR INDEX OF SHEETS, SEE SHEET NO. 2
FOR SUMMARY OF QUANTITIES, SEE SHEET NO. 4

CURRENT ADT:			
	LEG A	LEG B	LEG C
2009 ADT=	16,100	19,500	18,800
PC% =	63.4	68	67.6
SUZ =	4.4	4	3.9
MUX =	32.2	28	28.5

LEG A - START OF PROJECT TO DOWNS
LEG B - DOWNS TO LEROY
LEG C - LEROY TO END OF PROJECT

DESIGN DESIGNATION
INTERSTATE



FULL SIZE PLANS HAVE BEEN PREPARED USING STANDARD ENGINEERING SCALES. REDUCED SIZED PLANS WILL NOT CONFORM TO STANDARD SCALES. IN MAKING MEASUREMENTS ON REDUCED PLANS, THE ABOVE SCALES MAY BE USED.

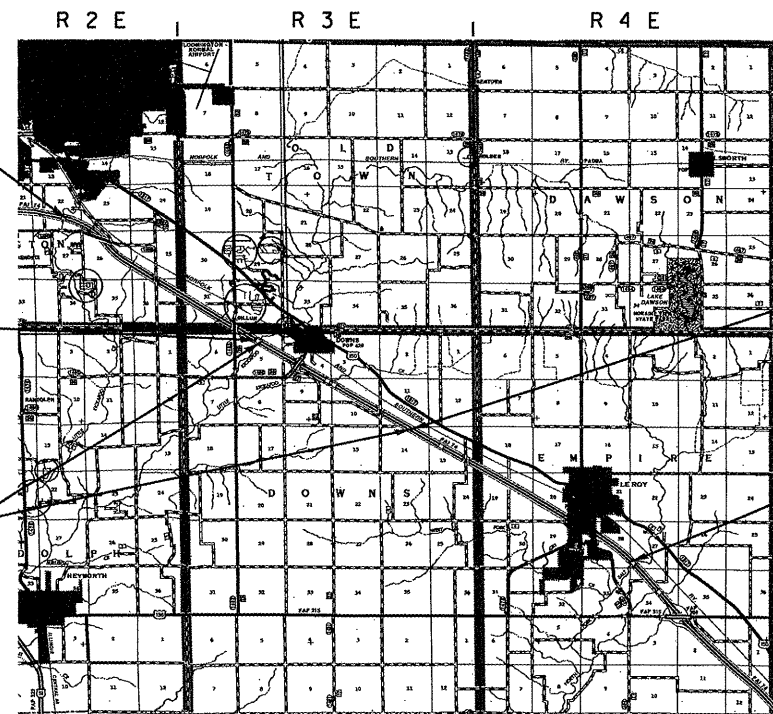
J.U.L.I.E.
JOINT UTILITY LOCATION INFORMATION FOR EXCAVATION
1-800-892-0123
OR 811
BLOOMINGTON, OLD TOWN, DOWNS, & EMPIRE TOWNSHIPS

PROJECT ENGINEER: JASON STULTS
DESIGNERS: ISRAEL EMMANUEL &
WILLIAM PARKER, JR.
217-465-4181
CONTRACT NO. 70846

BEGIN LOCATION #1
EB LANES ONLY,
STA 781+58
(E END OF SN 057-0120)

END LOCATION #1
EB LANES ONLY,
STA 1035+00
(W END OF SN 057-0125)

OMISSION EB & WB
STA 1035+00 TO
STA 1241+13.5



BEGIN LOCATION #2
EB & WB DRIVING LANES
STA 1241+13.5 BK =
STA 100+00.0 AH

END LOCATION #2
EB & WB DRIVING LANES
STA 375+88
(W END OF SN 057-0133 & 0134)

GROSS LENGTH = 73,443.00 FT. = 13.910 MILES
NET LENGTH = 52,930.00 FT. = 10.025 MILES

STATE OF ILLINOIS
DEPARTMENT OF TRANSPORTATION
DIVISION OF HIGHWAYS

SUBMITTED 2/4 20 10

Joseph E. Cooverman
DEPUTY DIRECTOR OF HIGHWAYS, REGION ENGINEER

March 19, 2010
Scott E. Stult P.E. *KS*
ENGINEER OF DESIGN AND ENVIRONMENT

March 10, 2010
Christine M. Reed *KS*
DIRECTOR OF HIGHWAYS, CHIEF ENGINEER

PRINTED BY THE AUTHORITY
OF THE STATE OF ILLINOIS