

F.A.P. RTE.	SECTION	COUNTY	TOTAL SHEETS	SHEET NO.
310	86-11LS	SCOTT	19	1

D-96-508-00

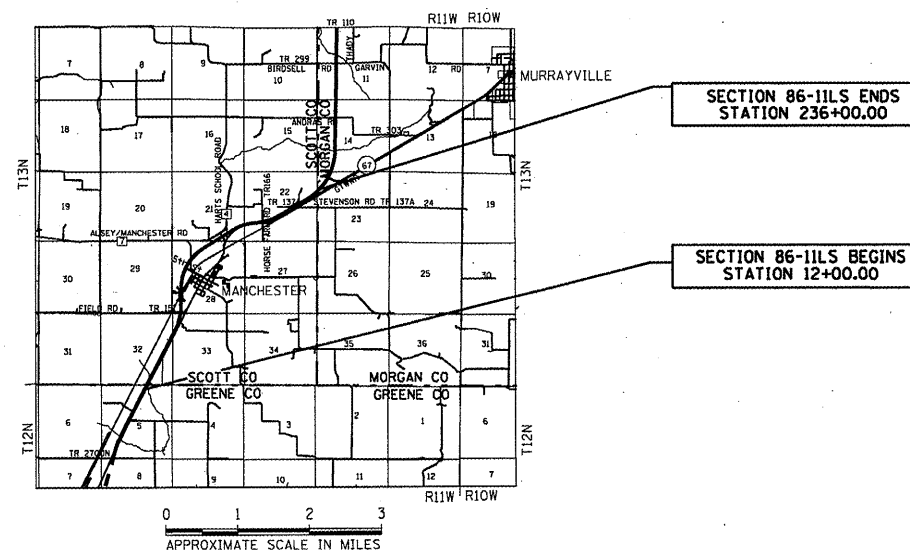
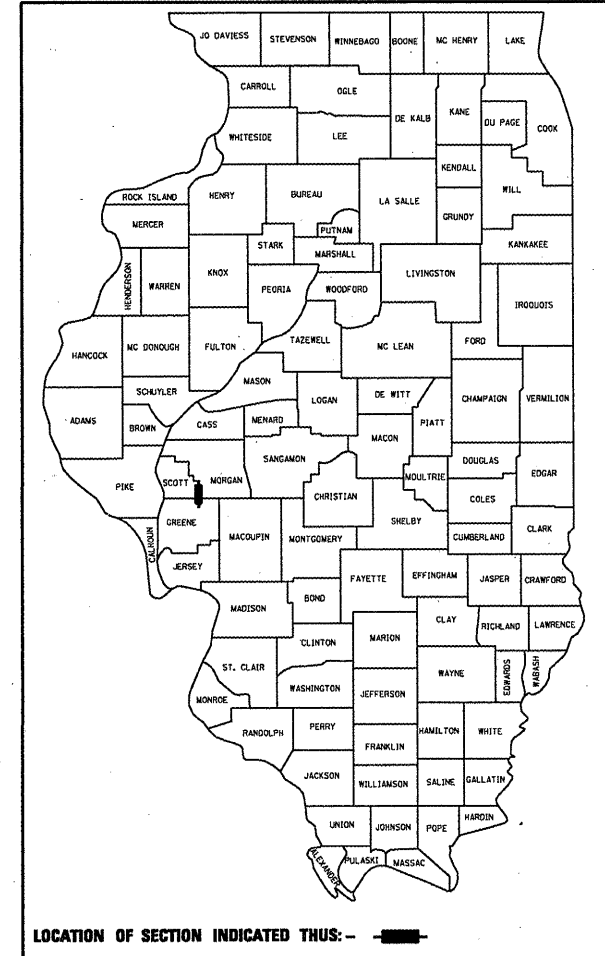
STATE OF ILLINOIS  
DEPARTMENT OF TRANSPORTATION  
DIVISION OF HIGHWAYS  
**PLANS FOR PROPOSED  
FEDERAL AID HIGHWAY**

F.A.P. ROUTE 310 (U.S. HWY. 67)  
SECTION 86-11LS  
PROJECT LANDSCAPING  
SCOTT COUNTY  
C-96-176-10

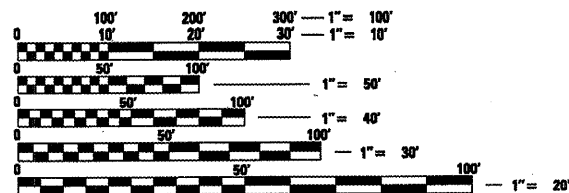
FOR INDEX OF SHEETS, SEE SHEET NO. 2

**STANDARD**

000001-05  
701101-02  
701105-02  
701901-01



NET LENGTH OF SECTION 86-11LS = 22,400.00 FEET = 4.242 MILES



FULL SIZE PLANS HAVE BEEN PREPARED USING STANDARD ENGINEERING SCALES. REDUCED SIZED PLANS WILL NOT CONFORM TO STANDARD SCALES. IN MAKING MEASUREMENTS ON REDUCED PLANS, THE ABOVE SCALES MAY BE USED.

J.U.L.I.E.  
JOINT UTILITY LOCATION INFORMATION FOR EXCAVATION  
1-800-892-0123

CONTRACT NO. 72532

PROJECT ENGINEER: JOHN C. NEGANGARD (217) 782-6990  
SENIOR SQUAD LEADER: VINCE MADONIA (217) 785-9046

STATE OF ILLINOIS  
DEPARTMENT OF TRANSPORTATION  
DIVISION OF HIGHWAYS

SUBMITTED February 3, 2010  
Rig Z Onick  
DISTRICT ENGINEER

March 19, 2010  
Scott E. Stiel, P.E. (RS)  
ENGINEER OF DESIGN AND ENVIRONMENT

March 19, 2010  
Christine M. Reed (RS)  
DIRECTOR, DIVISION OF HIGHWAYS

HUTCHISON ENGINEERING, INC  
JACKSONVILLE, ILLINOIS

PRINTED BY THE AUTHORITY OF THE STATE OF ILLINOIS

F.A.P. RTE.	SECTION	COUNTY	TOTAL SHEETS	SHEET NO.
310	86-11LS	SCOTT	19	2
STA.		TO STA.		
FED. ROAD DIST. NO.	ILLINOIS	FED. AID PROJECT		

Y003  
100%  
STATE

INDEX

- 1 COVER SHEET, STANDARDS
- 2 INDEX, SUMMARY OF QUANTITIES, GENERAL NOTES
- 3-19 LANDSCAPING PLANS

GENERAL NOTES

1. THE TREES SHALL BE SPACED A MINIMUM OF 20 FEET APART.
2. THE LOCATIONS OF ALL PLANTS SHOWN ON THE PLANS ARE APPROXIMATE. THE DISTRICT LANDSCAPE ARCHITECT AND THE DEPARTMENT SHALL HAVE THE RIGHT TO ADJUST THE LOCATION OF PLANTS. NO ADDITIONAL COMPENSATION WILL BE ALLOWED THE CONTRACTOR FOR CONFORMING WITH THIS PROVISION.
3. CLASS 4 SEEDING AREAS SHALL EXTEND FROM A LINE 20 FEET FROM THE EDGES OF THE OUTSIDE SHOULDERS TO THE ACCESS CONTROL OR THE RIGHT-OF-WAY LINES AT THE LOCATIONS SHOWN ON THE PLANS.
4. THE SEEDING SHALL NOT BEGIN UNTIL ALL OTHER WORK HAS BEEN COMPLETED ON THIS SECTION UNLESS OTHERWISE DIRECTED BY THE LANDSCAPE ARCHITECT OR THE ENGINEER. NO FERTILIZER NUTRIENTS OR MULCH WILL BE REQUIRED FOR THE INTER SEEDING.
5. THE CONSTRUCTION LIMITS SHOWN ON THE PLANS ARE FOR THE GRADING AND PAVING OF THE VARIOUS CONSTRUCTION SECTIONS AND SHALL NOT BE CONSTRUED TO BE THE LIMITS FOR THE LANDSCAPING ON THIS PROJECT.

COMMITMENTS

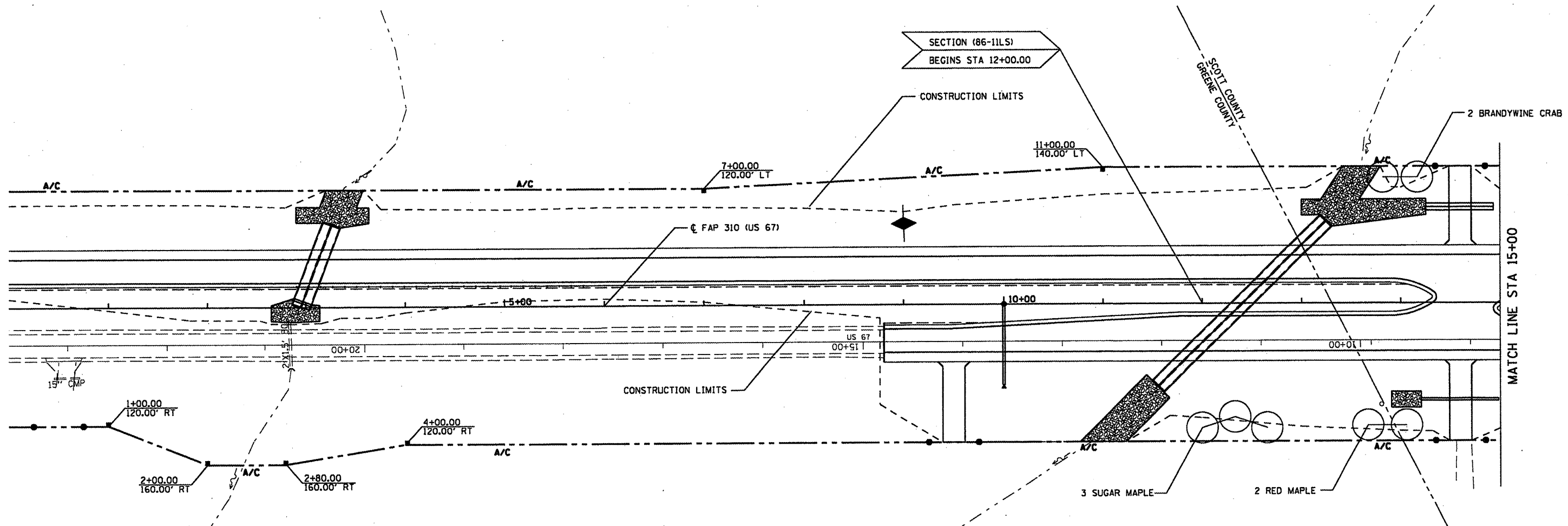
SUMMARY OF QUANTITIES

PAY CODE ITEM	ITEM	UNIT	TOTAL	QUANTITY PER SHEET																	
				3	4	5	6	7	8	9	10	11	12	13	14	15	16	17	18	19	
25000750	MOWING	ACRE	17.6					0.3	4.6	3.9	0.3					3.9	1.3	1.6	1.7		
25001800	SEEDING, CLASS 4 (MODIFIED)	ACRE	17.6					0.3	4.6	3.9	0.3					3.9	1.3	1.6	1.7		
67100100	MOBILIZATION	L SUM	1.0																		
A2001020	TREE, ACER RUBRUM (RED MAPLE), 2-1/2" CALIPER, BALLED AND BURLAPPED	EACH	53	2	3	5	3	2	2	4	7		5		3	6	3	2	5	2	
A2001720	TREE, ACER SACCHARUM (SUGAR MAPLE), 2-1/2" CALIPER, BALLED AND BURLAPPED	EACH	64	3	5	6		7	8	7	8		5		3	4	3		3	2	
A2002320	TREE, BETULA NIGRA (RIVER BIRCH), 2-1/2" CALIPER, BALLED AND BURLAPPED	EACH	8			2	2			2								2			
A2002916	TREE, CELTIS OCCIDENTALIS (COMMON HACKBERRY), 2" CALIPER, BALLED AND BURLAPPED	EACH	20		2		2		4	5			3	2		2					
A2007116	TREE, QUERCUS RUBRA (RED OAK), 2" CALIPER, BALLED AND BURLAPPED	EACH	28		3	2		2	3	5	3			2		2		3		3	
A2007720	TREE, TAXODIUM DISTICHUM SHAWNEE BRAVE (SHAWNEE BRAVE BALD CYPRESS), 2-1/2" CALIPER, BALLED AND BURLAPPED	EACH	9							6				3							
B2001166	TREE, CERCIS CANADENSIS (EASTERN REDBUD) 6' HEIGHT, CLUMP FORM, BALLED AND BURLAPPED	EACH	18					4	2				2		2	3			2	3	
B2001666	TREE, CRATAEGUS CRUGALLI INERMIS (THORN LESS COCKSPUR HAWTHORN), 6' HEIGHT, SHRUB FORM, BALLED AND BURLAPPED	EACH	9										2		3	2		2			
B2001966	TREE, CRATAEGUS PHAENOPYRUM (WASHINGTON HAWTHORN), 6' HEIGHT, CLUMP FORM, BALLED AND BURLAPPED	EACH	5			3	2														
B2003066	TREE, MALUS BRANDYWINE (BRANDYWINE CRAB APPLE), 6' HEIGHT, CLUMP FORM, BALLED AND BURLAPPED	EACH	17	2		2		2	4				3					2	2		
B2004316	TREE, MALUS RADIANT (RADIANT CRAB APPLE), 2" CALIPER, TREE FORM, BALLED AND BURLAPPED	EACH	22						3				3	2	3	2	3			3	3
B2005066	TREE, MALUS SNOWDRIFT (SNOWDRIFT CRAB APPLE), 6' HEIGHT, CLUMP FORM, BALLED AND BURLAPPED	EACH	25		2	2	2	5	4	2			2			3	3				
D2002972	EVERGREEN, PINUS STROBUS (EASTERN WHITE PINE), 6' HEIGHT, BALLED AND BURLAPPED	EACH	55		10	5		5						5	5		5	5	5	10	
K0026700	TREE CARE	EACH	2																		
K0026710	TREE CARE MULCH	L SUM	1																		
K0026720	TREE INTERMEDIATE AND SHRUB WATERING	UNIT	4																		

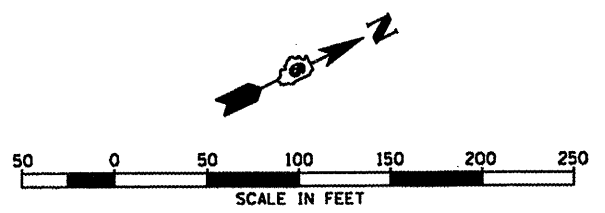
REVISIONS	
NAME	DATE

ILLINOIS DEPARTMENT OF TRANSPORTATION  
INDEX, SUMMARY OF QUANTITIES,  
 AND GENERAL NOTES  
 FAP ROUTE 310  
 SCALE: VERT.      DRAWN BY    EMR  
 HORIZ.              CHECKED BY   WTS  
 DATE

CONTRACT NO. 72532			
F.A.P. RTE.	SECTION	COUNTY	TOTAL SHEET NO.
310	86-11LS	SCOTT	19 3
STA. 0+00	TO STA. 15+00		
FED. ROAD DIST. NO.	ILLINOIS	FED. AID PROJECT	



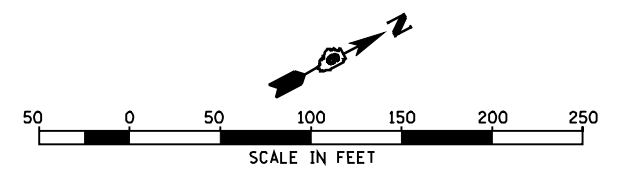
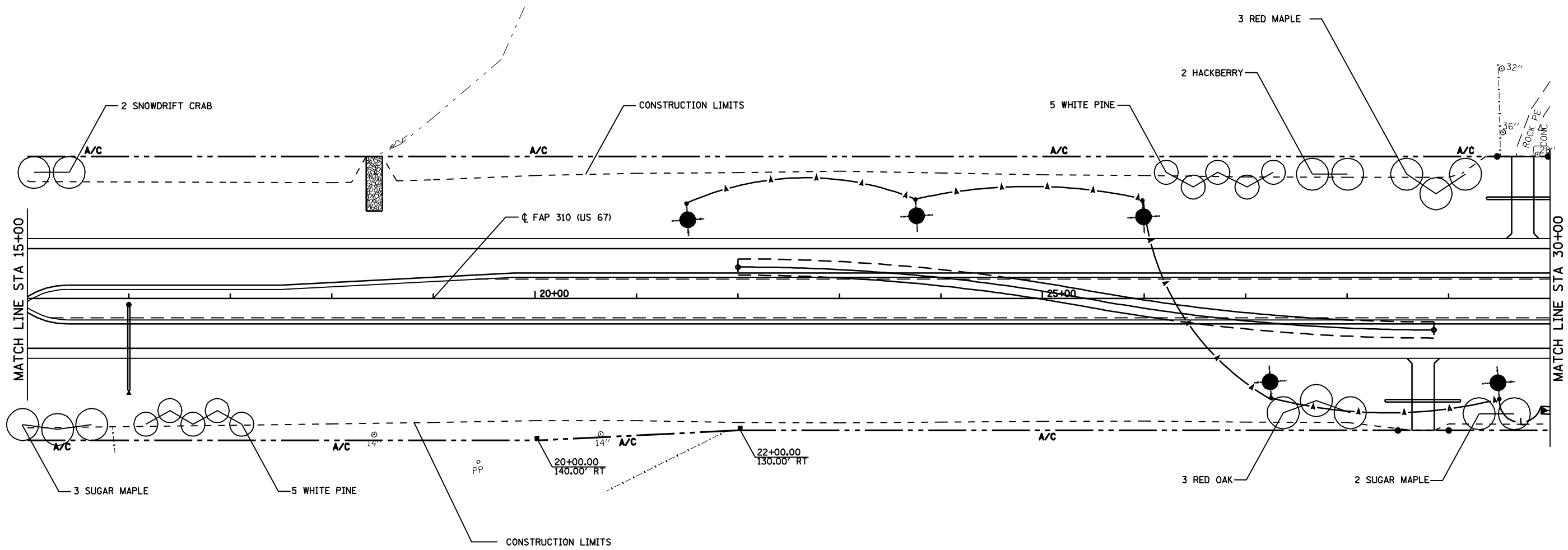
DISTRICT SIX		
EXAMINED	January 14	20 10
<i>[Signature]</i>		
OPERATIONS ENGINEER		
EXAMINED	January 20	20 10
<i>[Signature]</i>		
PROGRAM IMPLEMENTATION ENGINEER		
EXAMINED	Jan 14	20 10
<i>[Signature]</i>		
PROGRAM DEVELOPMENT ENGINEER		



REVISIONS	
NAME	DATE

ILLINOIS DEPARTMENT OF TRANSPORTATION  
**LANDSCAPING PLAN**  
 FAP ROUTE 310  
 STA 0+00 TO STA 15+00  
 SECTION 86-11 LS  
 SCOTT COUNTY  
 SCALE: VERT. \_\_\_\_\_  
 HORIZ. \_\_\_\_\_  
 DATE \_\_\_\_\_  
 DRAWN BY EMR  
 CHECKED BY WTS

F.A.P. RTE.	SECTION	COUNTY	TOTAL SHEETS	SHEET NO.
310	86-11LS	SCOTT	19	4
STA. 15+00		TO STA. 30+00		
FED. ROAD DIST. NO.		ILLINOIS FED. AID PROJECT		



REVISIONS	
NAME	DATE

ILLINOIS DEPARTMENT OF TRANSPORTATION

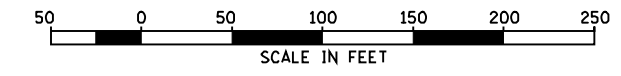
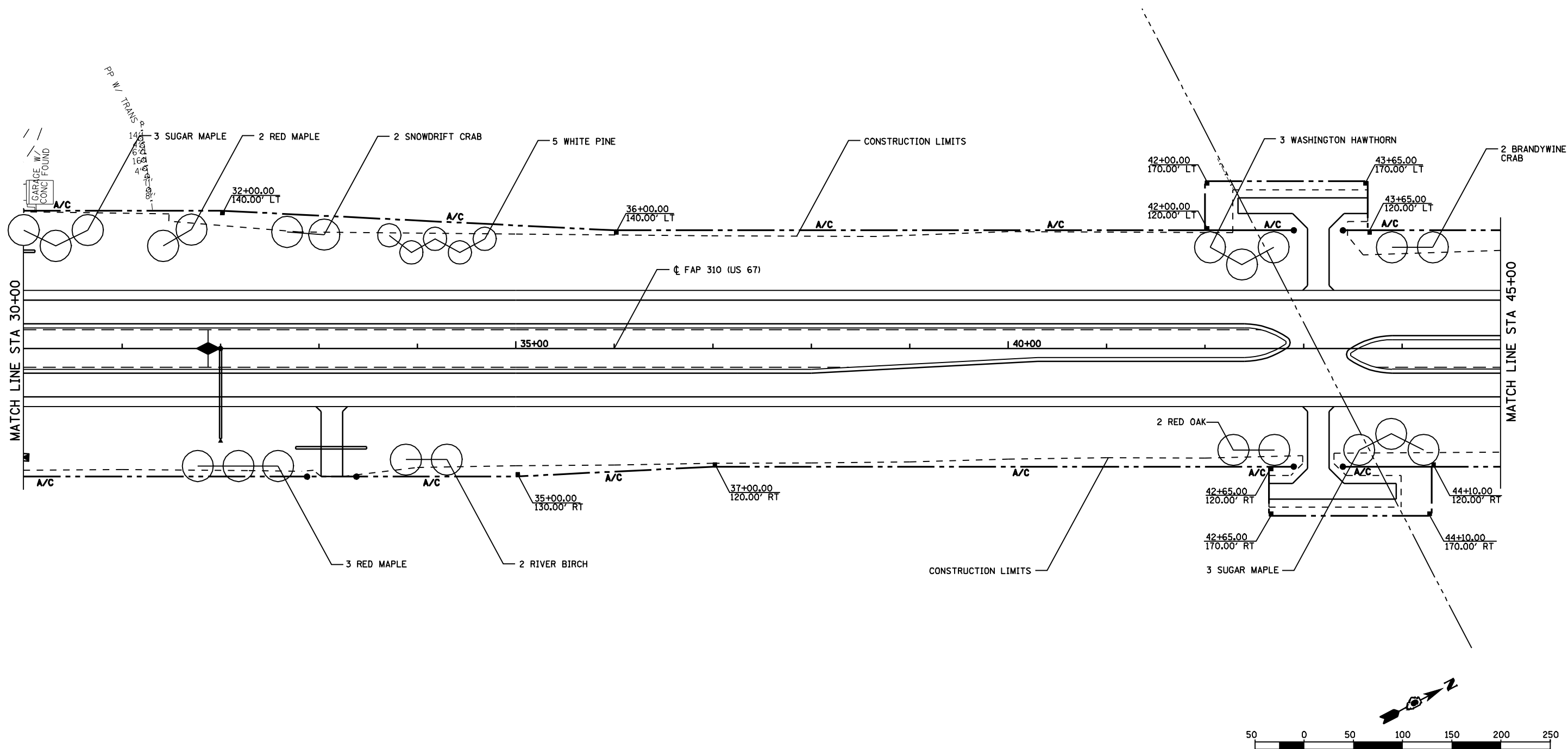
**LANDSCAPING PLAN**

FAP ROUTE 310  
STA 15+00 TO STA 30+00  
SECTION 86-11 LS  
SCOTT COUNTY

SCALE: VERT. \_\_\_\_\_  
HORIZ. \_\_\_\_\_

DRAWN BY EMR  
CHECKED BY WTS

F.A.P. RTE.	SECTION	COUNTY	TOTAL SHEETS	SHEET NO.
310	86-11LS	SCOTT	19	5
STA. 30+00		TO STA. 45+00		
FED. ROAD DIST. NO.		ILLINOIS FED. AID PROJECT		



REVISIONS	
NAME	DATE

ILLINOIS DEPARTMENT OF TRANSPORTATION

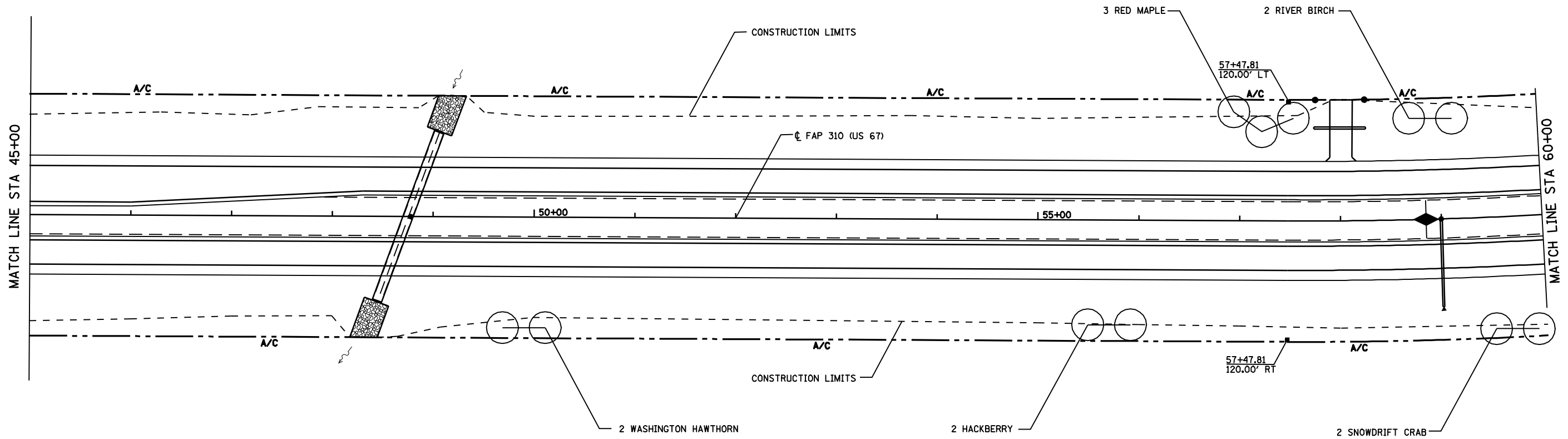
**LANDSCAPING PLAN**

FAP ROUTE 310  
 STA 30+00 TO STA 45+00  
 SECTION 86-11 LS  
 SCOTT COUNTY

SCALE: VERT. \_\_\_\_\_  
 HORIZ. \_\_\_\_\_

DRAWN BY: EMR  
 CHECKED BY: WTS

F.A.P. RTE.	SECTION	COUNTY	TOTAL SHEETS	SHEET NO.
310	86-11LS	SCOTT	19	6
STA. 45+00		TO STA. 60+00		
FED. ROAD DIST. NO.	ILLINOIS	FED. AID PROJECT		



REVISIONS	
NAME	DATE

ILLINOIS DEPARTMENT OF TRANSPORTATION

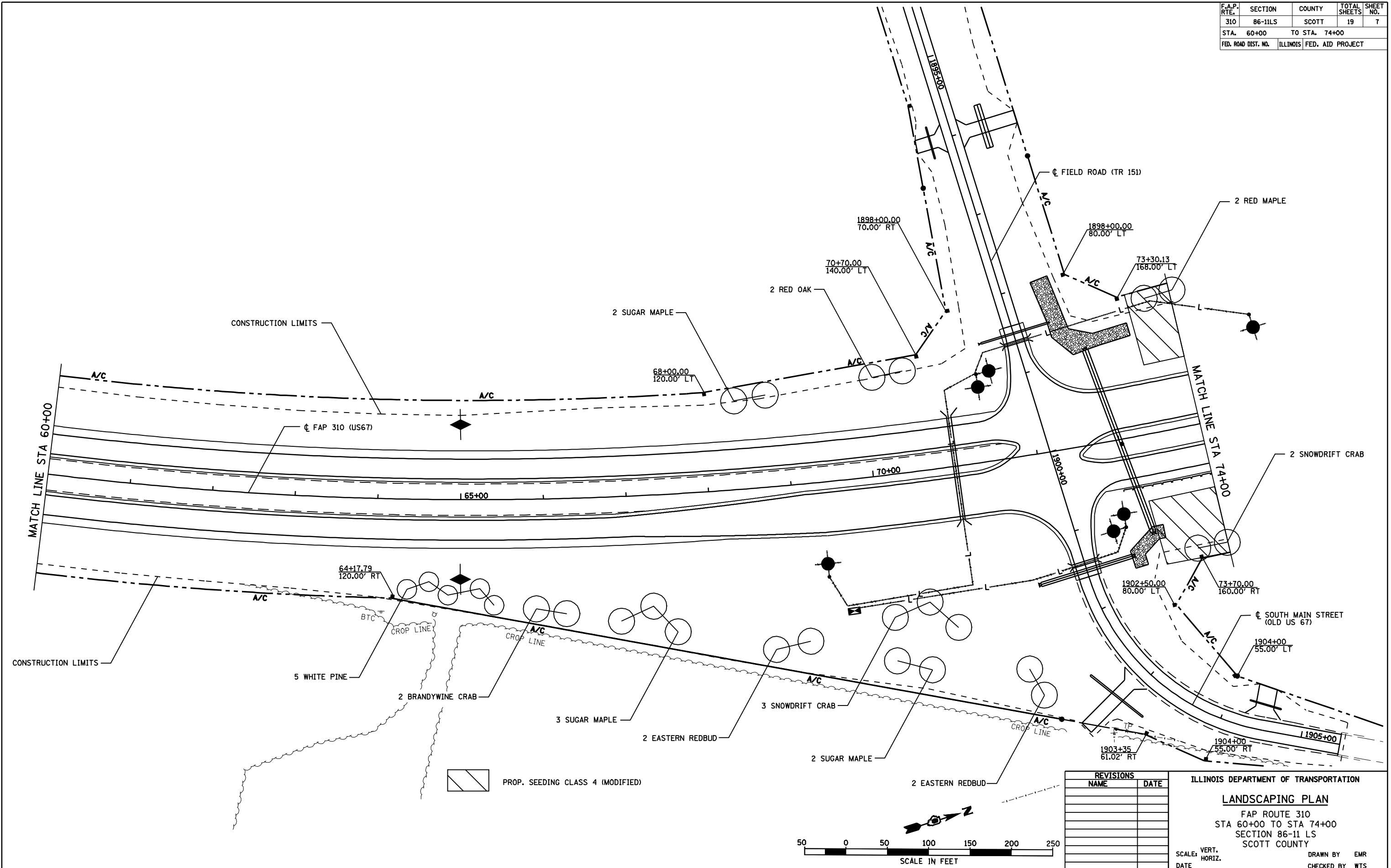
**LANDSCAPING PLAN**

FAP ROUTE 310  
 STA 45+00 TO STA 60+00  
 SECTION 86+11 LS  
 SCOTT COUNTY

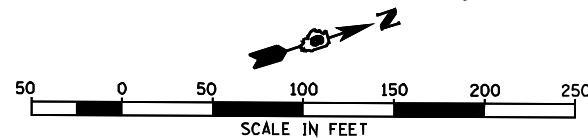
SCALE: VERT. \_\_\_\_\_  
 HORIZ. \_\_\_\_\_

DRAWN BY: EMR  
 CHECKED BY: WTS

F.A.P. RTE.	SECTION	COUNTY	TOTAL SHEETS	SHEET NO.
310	86-11LS	SCOTT	19	7
STA. 60+00		TO STA. 74+00		
FED. ROAD DIST. NO.		ILLINOIS FED. AID PROJECT		



 PROP. SEEDING CLASS 4 (MODIFIED)



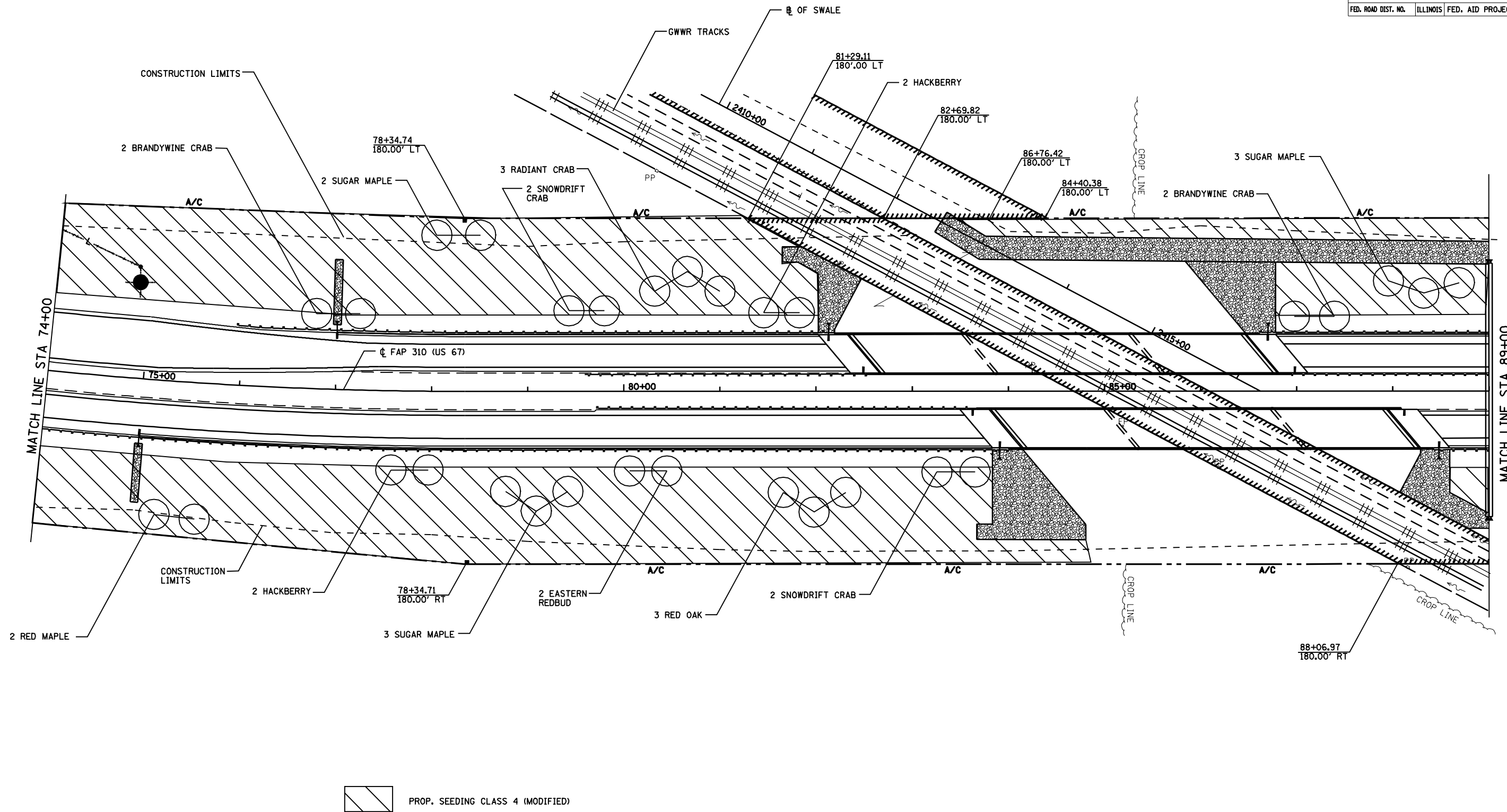
REVISIONS	
NAME	DATE

ILLINOIS DEPARTMENT OF TRANSPORTATION  
**LANDSCAPING PLAN**  
 FAP ROUTE 310  
 STA 60+00 TO STA 74+00  
 SECTION 86-11 LS  
 SCOTT COUNTY

SCALE: VERT. \_\_\_\_\_  
 HORIZ. \_\_\_\_\_

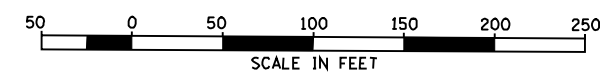
DRAWN BY EMR  
 CHECKED BY WTS

F.A.P. RTE.	SECTION	COUNTY	TOTAL SHEETS	SHEET NO.
310	86-11LS	SCOTT	19	8
STA. 74+00		TO STA. 89+00		
FED. ROAD DIST. NO.		ILLINOIS FED. AID PROJECT		



REVISIONS		ILLINOIS DEPARTMENT OF TRANSPORTATION	
NAME	DATE		

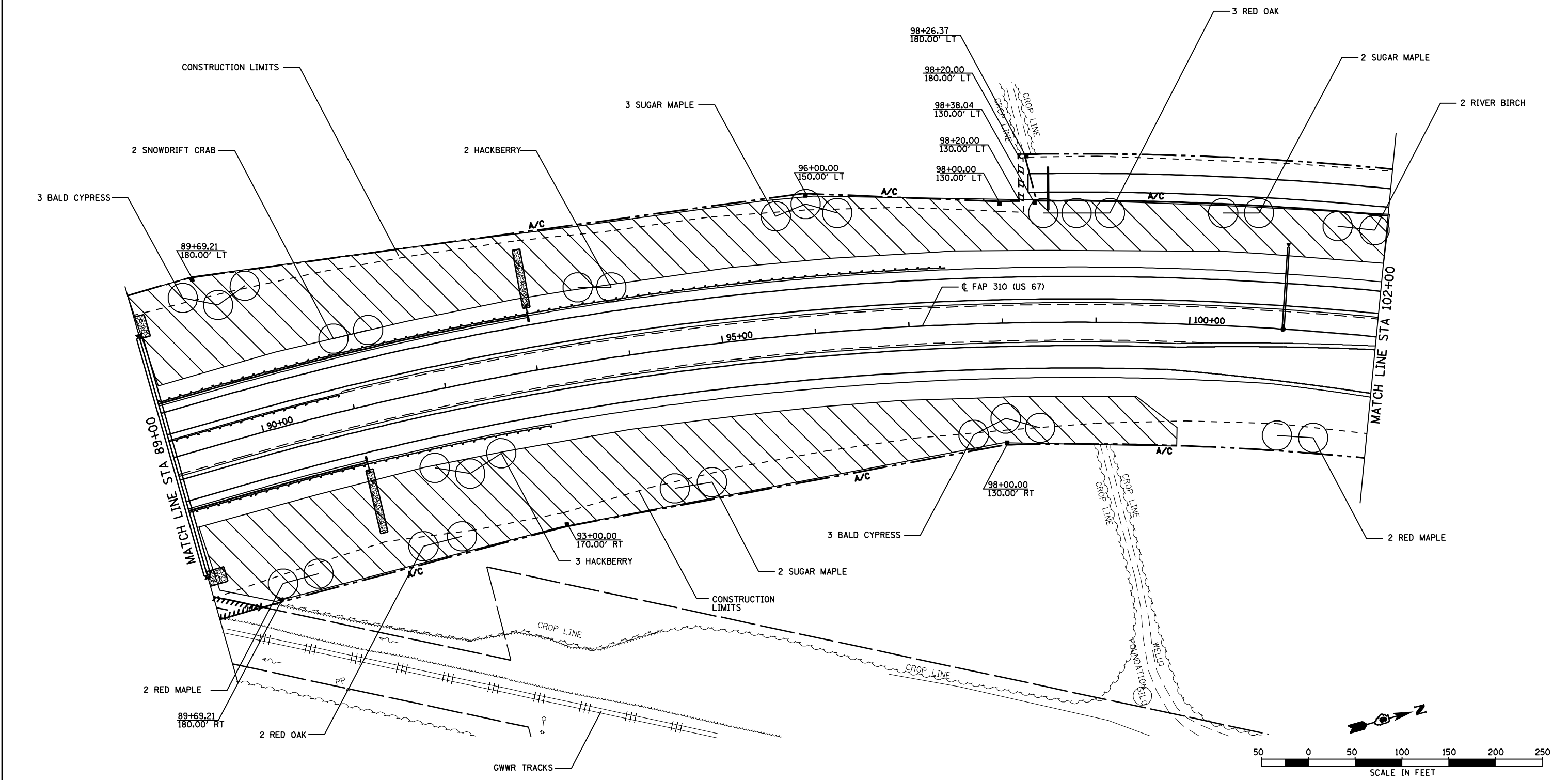
**LANDSCAPING PLAN**  
 FAP ROUTE 310  
 STA 74+00 TO STA 89+00  
 SECTION 86+11 LS  
 SCOTT COUNTY



SCALE: VERT. \_\_\_\_\_  
 HORIZ. \_\_\_\_\_  
 DATE \_\_\_\_\_ DRAWN BY EMR  
 CHECKED BY WTS



F.A.P. RTE.	SECTION	COUNTY	TOTAL SHEETS	SHEET NO.
310	86-11LS	SCOTT	19	9
STA. 89+00		TO STA. 102+00		
FED. ROAD DIST. NO.	ILLINOIS	FED. AID PROJECT		



 PROP. SEEDING CLASS 4 (MODIFIED)

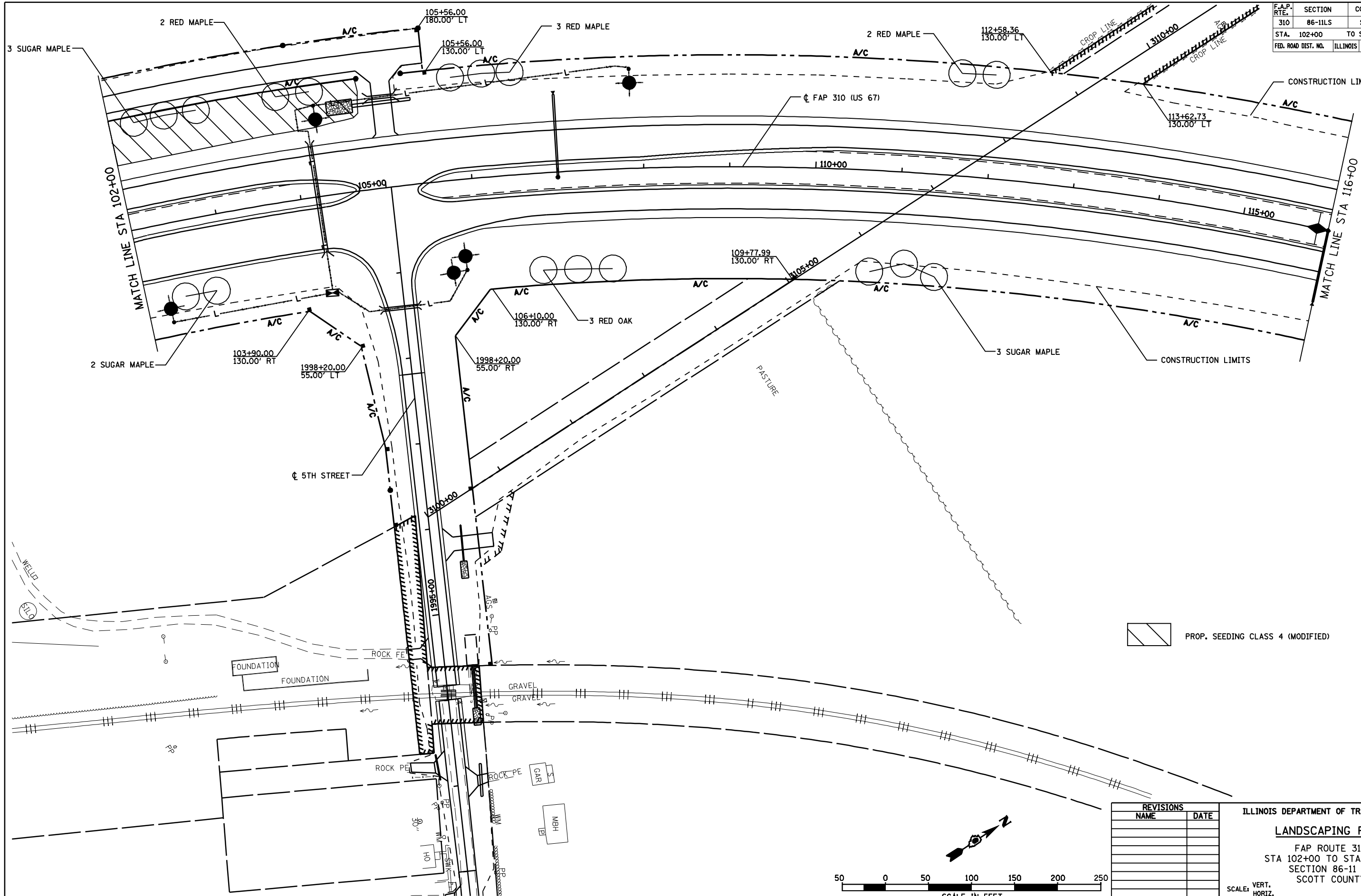
REVISIONS	
NAME	

ILLINOIS DEPARTMENT OF TRANSPORTATION  
**LANDSCAPING PLAN**  
 FAP ROUTE 310  
 STA 89+00 TO STA 102+00  
 SECTION 86-11 LS  
 SCOTT COUNTY

SCALE: VERT. \_\_\_\_\_  
 HORIZ. \_\_\_\_\_

DATE \_\_\_\_\_ DRAWN BY EMR  
 CHECKED BY WTS

F.A.P. RTE.	SECTION	COUNTY	TOTAL SHEETS	SHEET NO.
310	86-11LS	SCOTT	19	10
STA. 102+00 TO STA. 116+00		FED. ROAD DIST. NO. ILLINOIS FED. AID PROJECT		



 PROP. SEEDING CLASS 4 (MODIFIED)

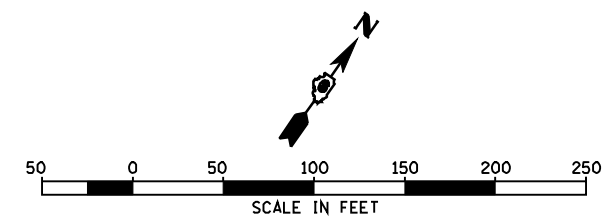
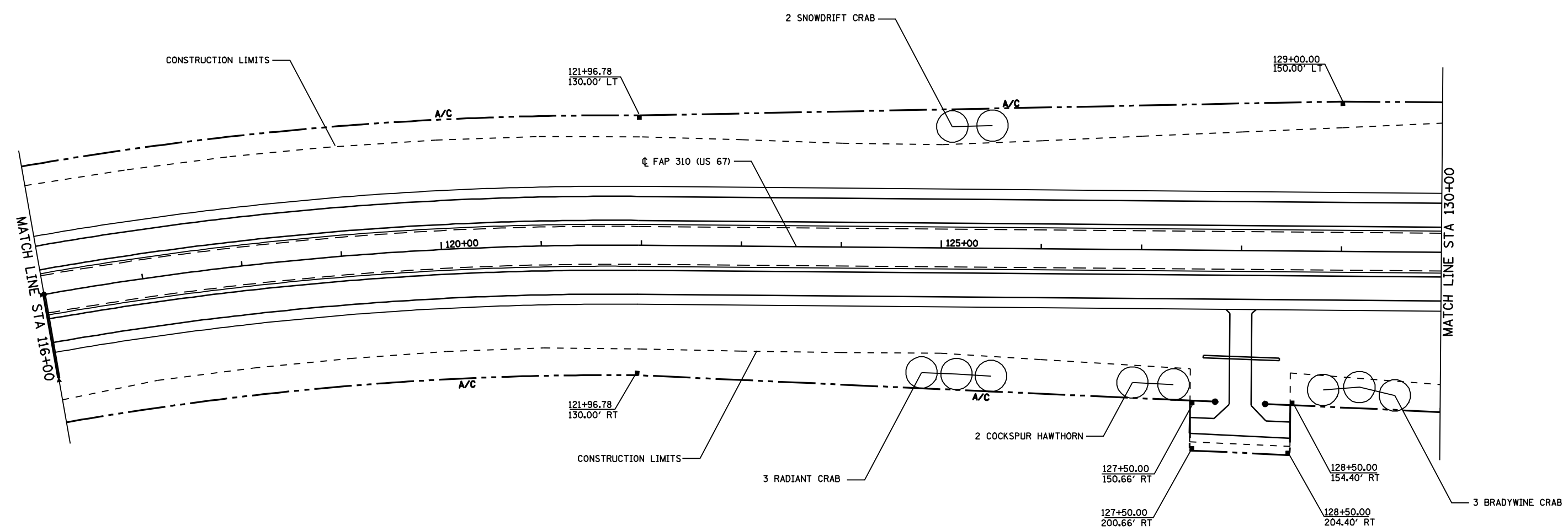
REVISIONS	
NAME	DATE

ILLINOIS DEPARTMENT OF TRANSPORTATION  
**LANDSCAPING PLAN**  
 FAP ROUTE 310  
 STA 102+00 TO STA 116+00  
 SECTION 86-11 LS  
 SCOTT COUNTY

SCALE: VERT. \_\_\_\_\_  
 HORIZ. \_\_\_\_\_

DRAWN BY: EMR  
 CHECKED BY: WTS

F.A.P. RTE.	SECTION	COUNTY	TOTAL SHEETS	SHEET NO.
310	86-11LS	SCOTT	19	11
STA. 116+00		TO STA. 130+00		
FED. ROAD DIST. NO.		ILLINOIS	FED. AID PROJECT	

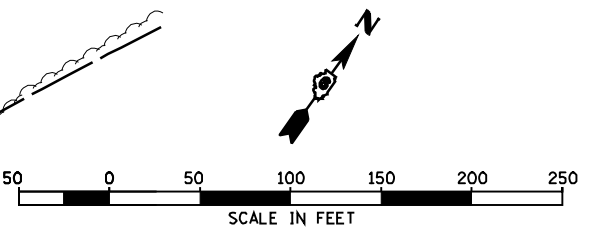
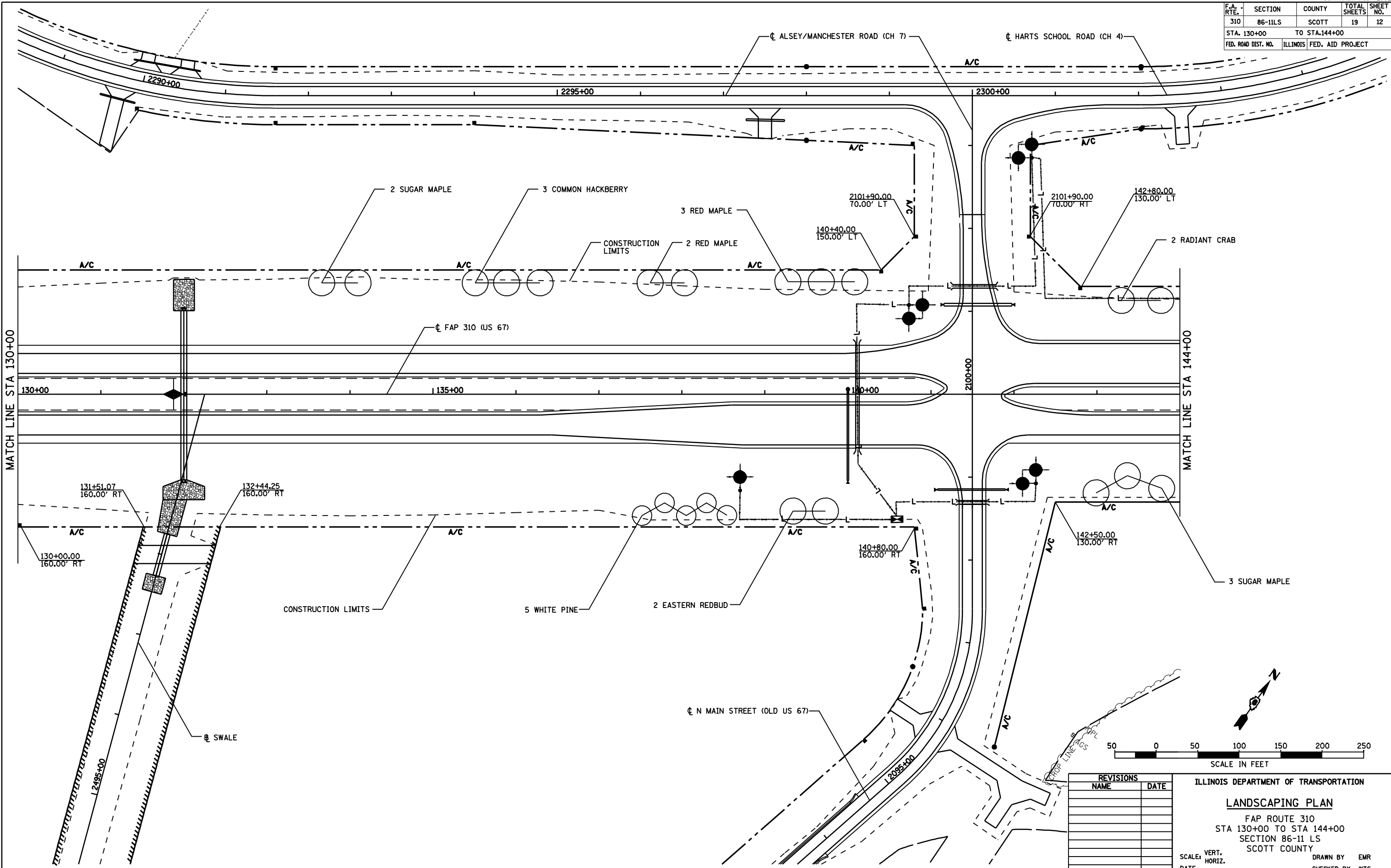


REVISIONS		ILLINOIS DEPARTMENT OF TRANSPORTATION	
NO.	NAME	DATE	

**LANDSCAPING PLAN**  
 FAP ROUTE 310  
 STA 116+00 TO STA 130+00  
 SECTION 86-11 LS  
 SCOTT COUNTY

SCALE: VERT. \_\_\_\_\_ DRAWN BY: EMR  
 HORIZ. \_\_\_\_\_ CHECKED BY: WTS  
 DATE \_\_\_\_\_

F.A. RTE.	SECTION	COUNTY	TOTAL SHEETS	SHEET NO.
310	86-11LS	SCOTT	19	12
STA. 130+00		TO STA. 144+00		
FED. ROAD DIST. NO.	ILLINOIS	FED. AID PROJECT		



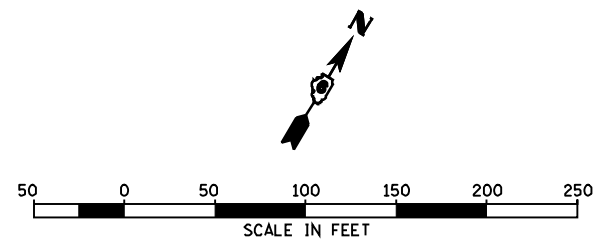
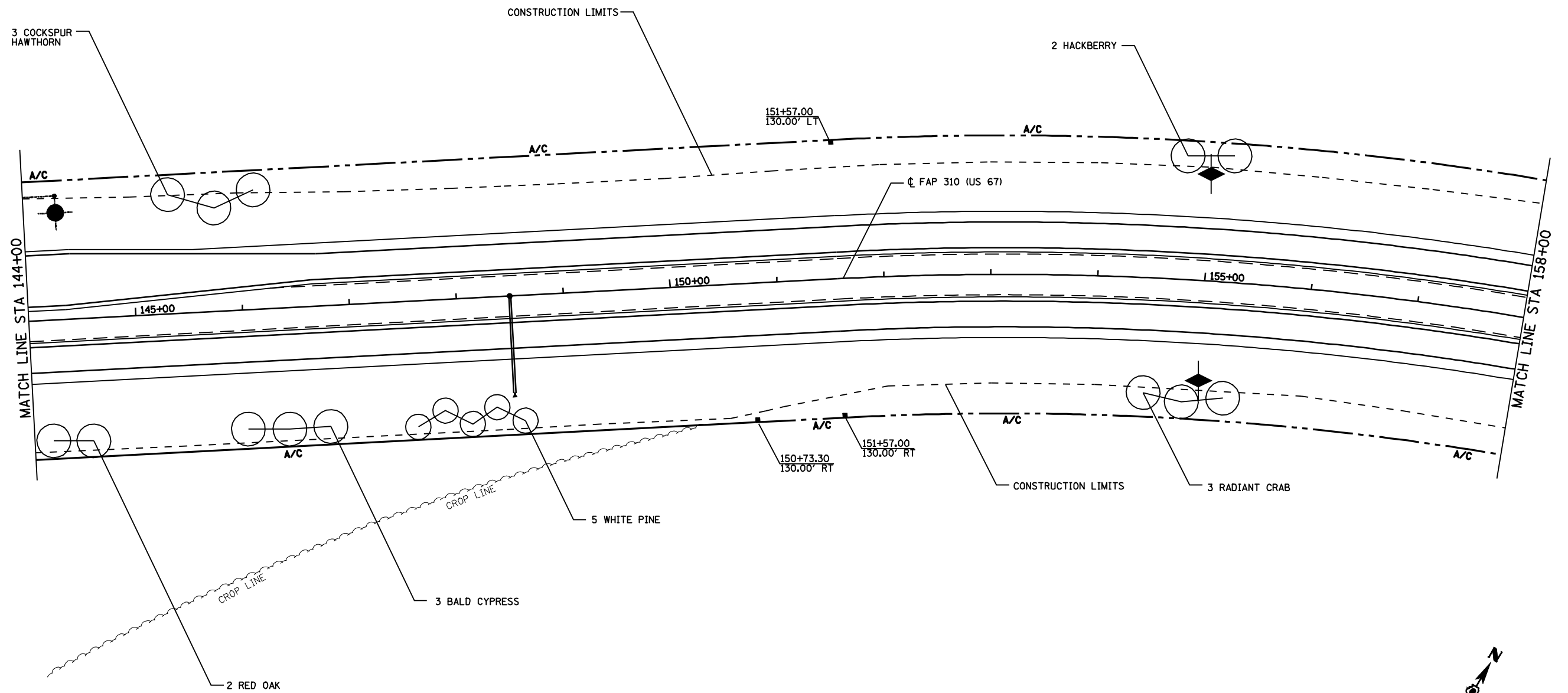
REVISIONS	
NAME	DATE

ILLINOIS DEPARTMENT OF TRANSPORTATION  
**LANDSCAPING PLAN**  
 FAP ROUTE 310  
 STA 130+00 TO STA 144+00  
 SECTION 86-11 LS  
 SCOTT COUNTY

SCALE: VERT. \_\_\_\_\_  
 HORIZ. \_\_\_\_\_

DRAWN BY: EMR  
 CHECKED BY: WTS

F.A.P. RTE.	SECTION	COUNTY	TOTAL SHEETS	SHEET NO.
310	86-11LS	SCOTT	19	13
STA. 144+00		TO STA. 158+00		
FED. ROAD DIST. NO.		ILLINOIS	FED. AID PROJECT	



REVISIONS	
NAME	DATE

ILLINOIS DEPARTMENT OF TRANSPORTATION

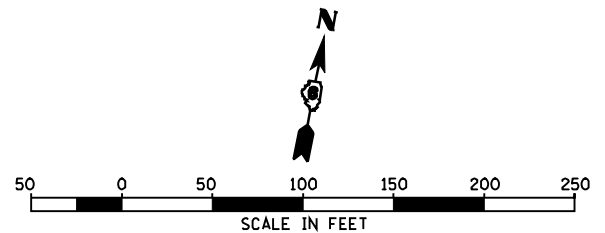
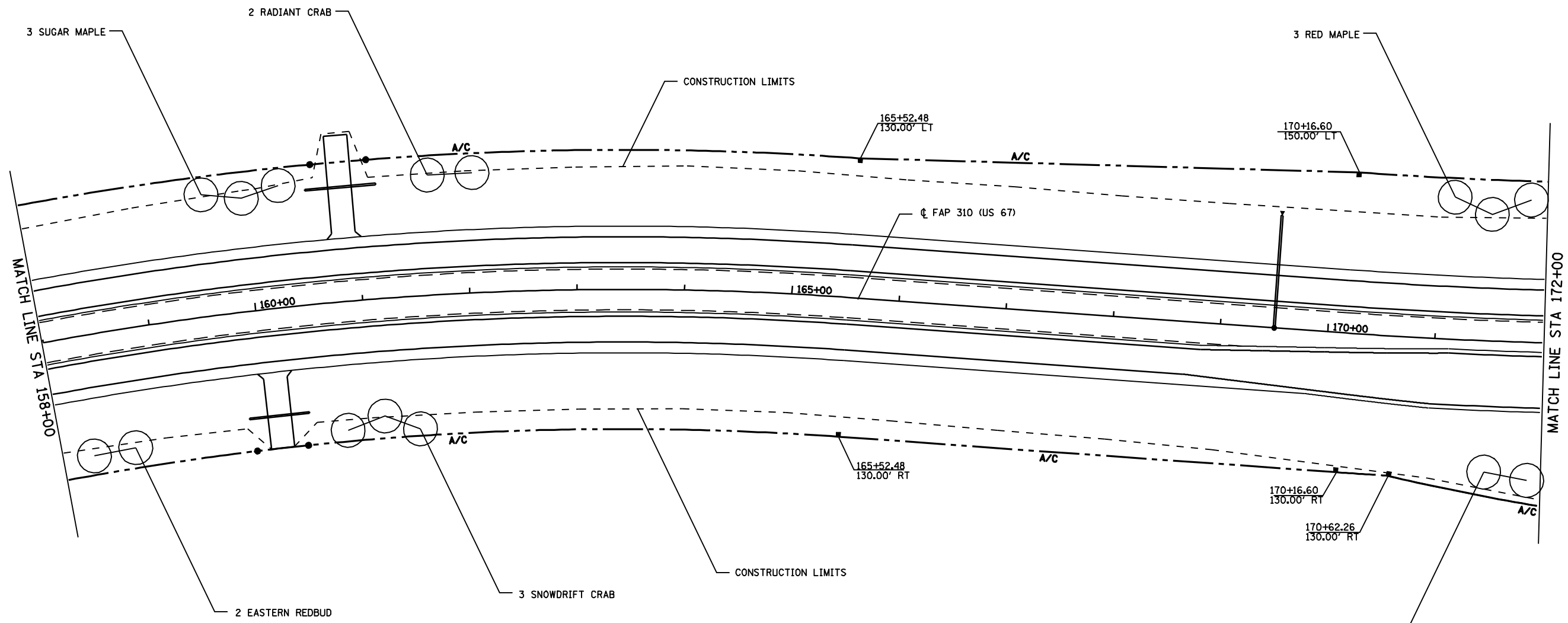
**LANDSCAPING PLAN**

FAP ROUTE 310  
 STA 144+00 TO STA 158+00  
 SECTION 86-11 LS  
 SCOTT COUNTY

SCALE: VERT. \_\_\_\_\_  
 HORIZ. \_\_\_\_\_

DRAWN BY: EMR  
 CHECKED BY: WTS

F.A.P. RTE.	SECTION	COUNTY	TOTAL SHEETS	SHEET NO.
310	86-11LS	SCOTT	19	14
STA. 158+00		TO STA. 172+00		
FED. ROAD DIST. NO.	ILLINOIS	FED. AID PROJECT		



REVISIONS	
NAME	DATE

ILLINOIS DEPARTMENT OF TRANSPORTATION

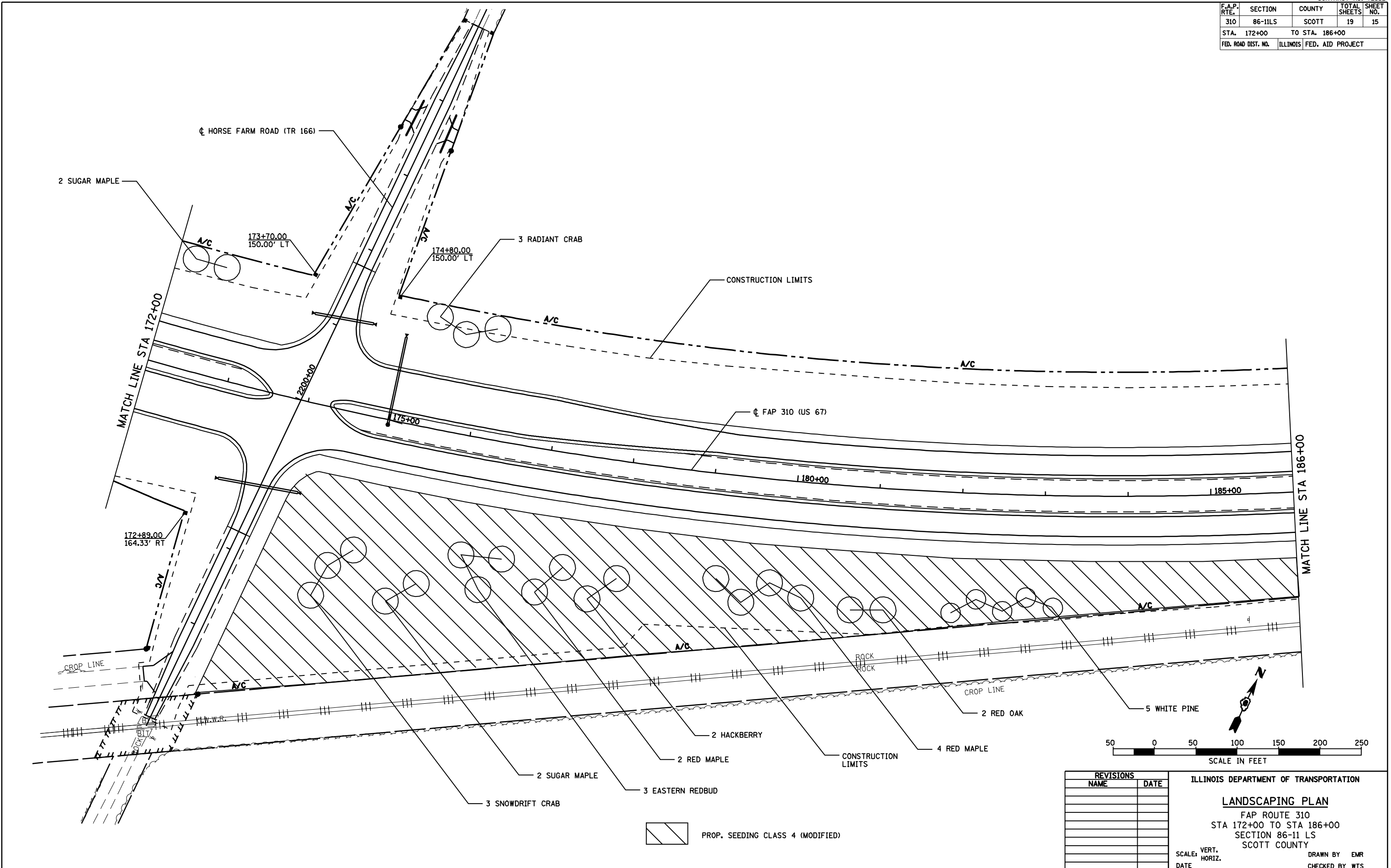
**LANDSCAPING PLAN**

FAP ROUTE 310  
 STA 158+00 TO STA 172+00  
 SECTION 86-11 LS  
 SCOTT COUNTY

SCALE: VERT. \_\_\_\_\_  
 HORIZ. \_\_\_\_\_

DRAWN BY EMR  
 CHECKED BY WTS

F.A.P. RTE.	SECTION	COUNTY	TOTAL SHEETS	SHEET NO.
310	86-11LS	SCOTT	19	15
STA. 172+00		TO STA. 186+00		
FED. ROAD DIST. NO.	ILLINOIS	FED. AID PROJECT		



REVISIONS	
NAME	DATE

ILLINOIS DEPARTMENT OF TRANSPORTATION

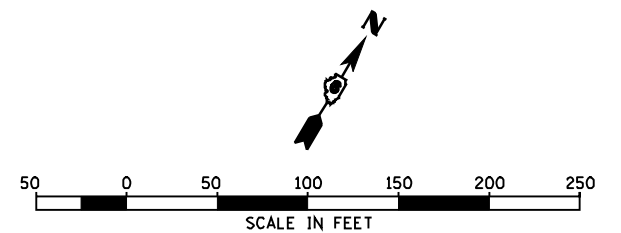
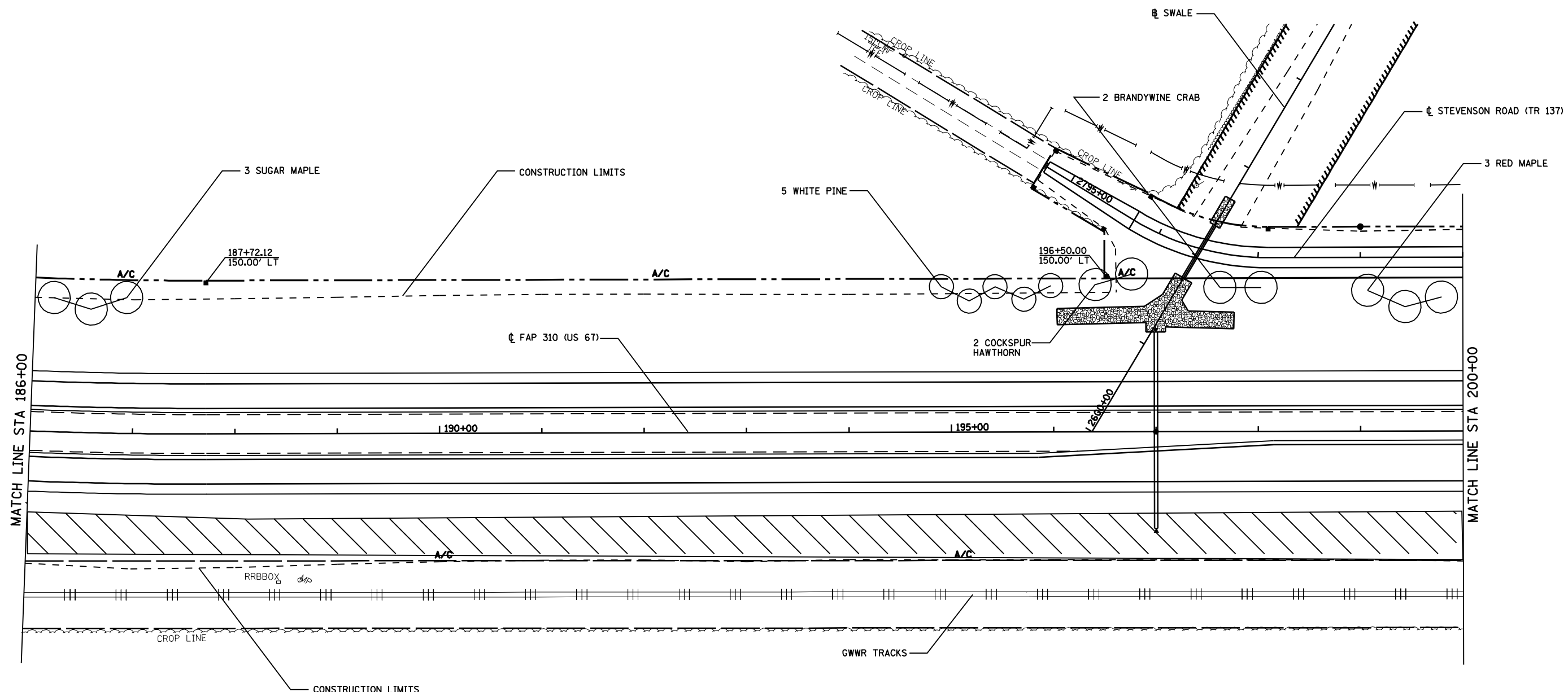
**LANDSCAPING PLAN**

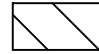
FAP ROUTE 310  
 STA 172+00 TO STA 186+00  
 SECTION 86-11 LS  
 SCOTT COUNTY

SCALE: VERT. \_\_\_\_\_  
 HORIZ. \_\_\_\_\_

DRAWN BY EMR  
 CHECKED BY WTS

F.A.P. RTE.	SECTION	COUNTY	TOTAL SHEETS	SHEET NO.
310	86-11LS	SCOTT	19	16
STA. 186+00		TO STA. 200+00		
FED. ROAD DIST. NO.		ILLINOIS	FED. AID PROJECT	



 PROP. SEEDING CLASS 4 (MODIFIED)

REVISIONS		DATE
NAME		

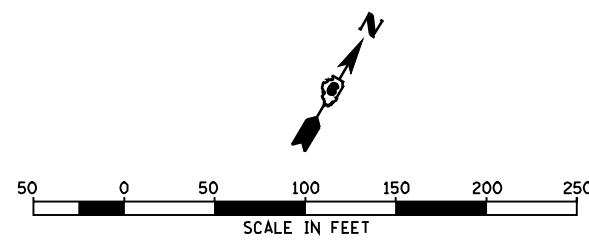
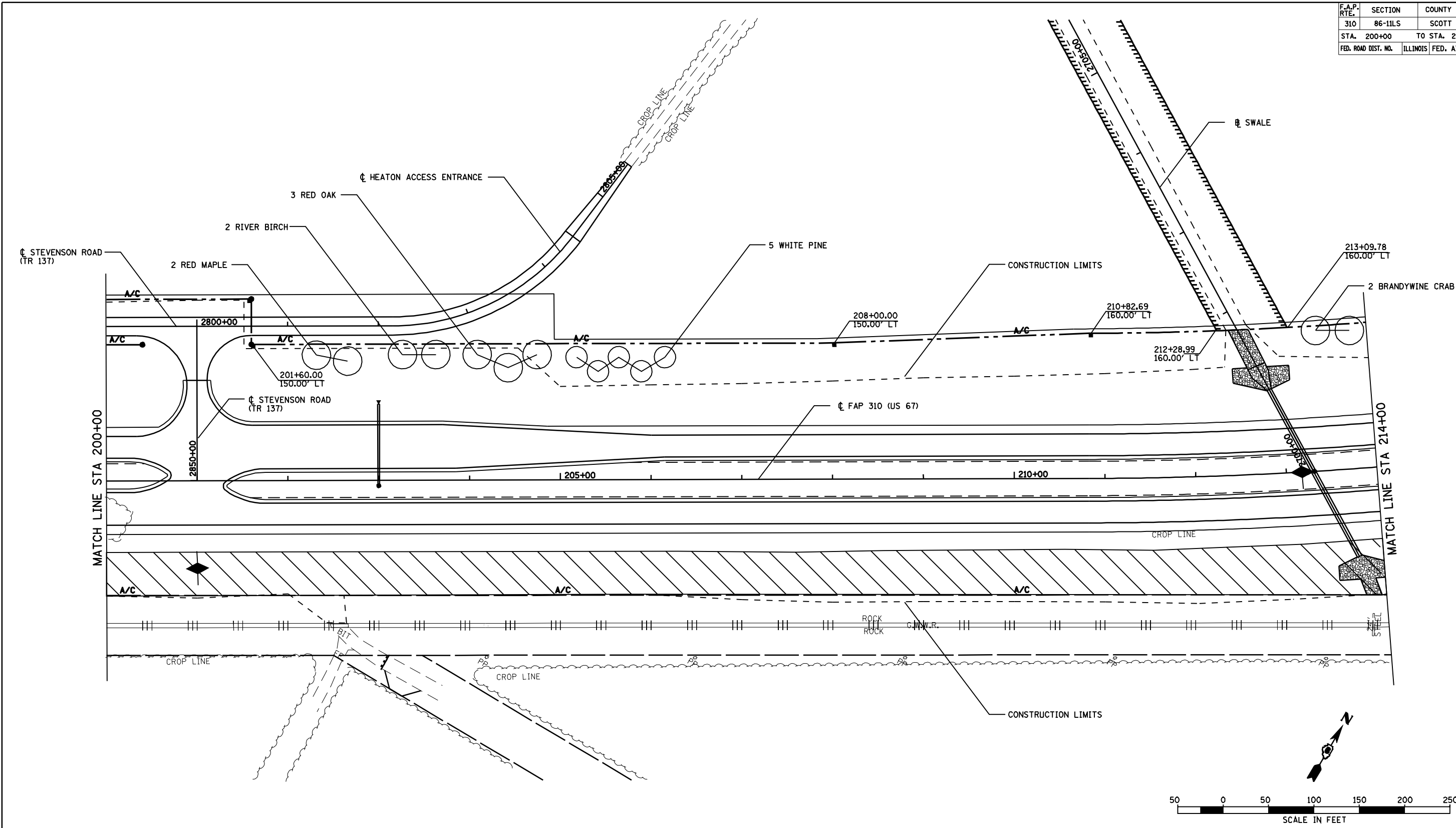
ILLINOIS DEPARTMENT OF TRANSPORTATION  
**LANDSCAPING PLAN**  
 FAP ROUTE 310  
 STA 186+00 TO STA 200+00  
 SECTION 86-11 LS  
 SCOTT COUNTY

SCALE: VERT. \_\_\_\_\_  
 HORIZ. \_\_\_\_\_  
 DATE \_\_\_\_\_

DRAWN BY EMR  
 CHECKED BY WTS



F.A.P. RTE.	SECTION	COUNTY	TOTAL SHEETS	SHEET NO.
310	86-11LS	SCOTT	19	17
STA. 200+00		TO STA. 214+00		
FED. ROAD DIST. NO.		ILLINOIS FED. AID PROJECT		

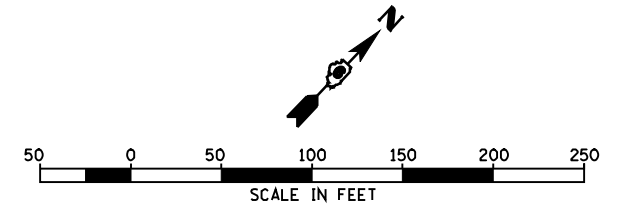
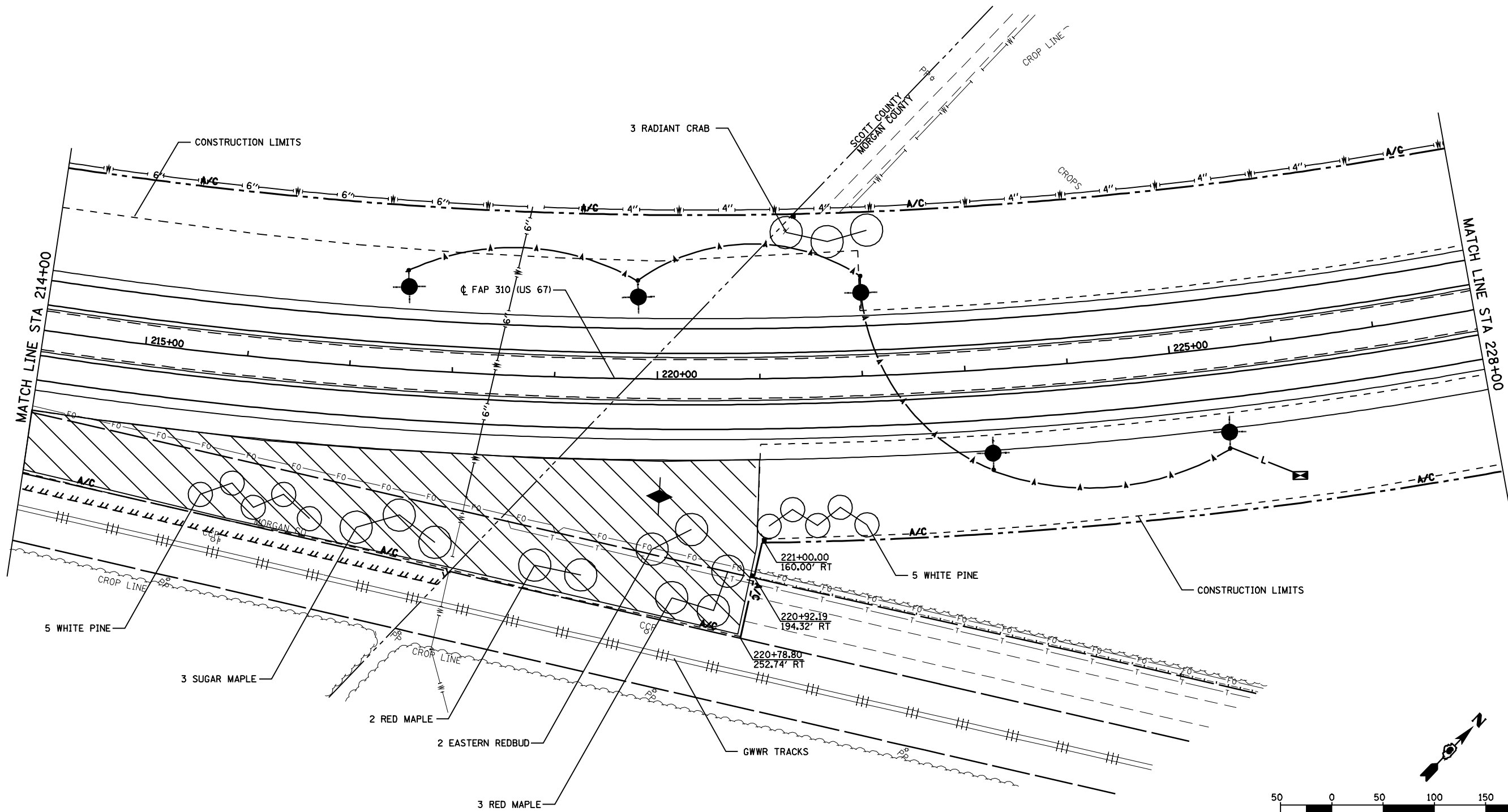


 PROP. SEEDING CLASS 4 (MODIFIED)

REVISIONS	
NAME	DATE

ILLINOIS DEPARTMENT OF TRANSPORTATION  
**FAP ROUTE 310  
 LANDSCAPING PLAN  
 STA 200+00 TO STA 214+00**  
 SCALE: VERT. \_\_\_\_\_  
 DATE \_\_\_\_\_ HORIZ. \_\_\_\_\_  
 DRAWN BY EMR  
 CHECKED BY WTS

F.A.P. RTE.	SECTION	COUNTY	TOTAL SHEETS	SHEET NO.
310	86-11LS	SCOTT	19	18
STA. 214+00		TO STA. 228+00		
FED. ROAD DIST. NO.		ILLINOIS	FED. AID PROJECT	

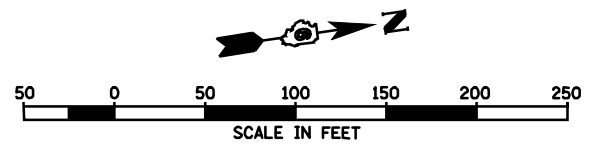
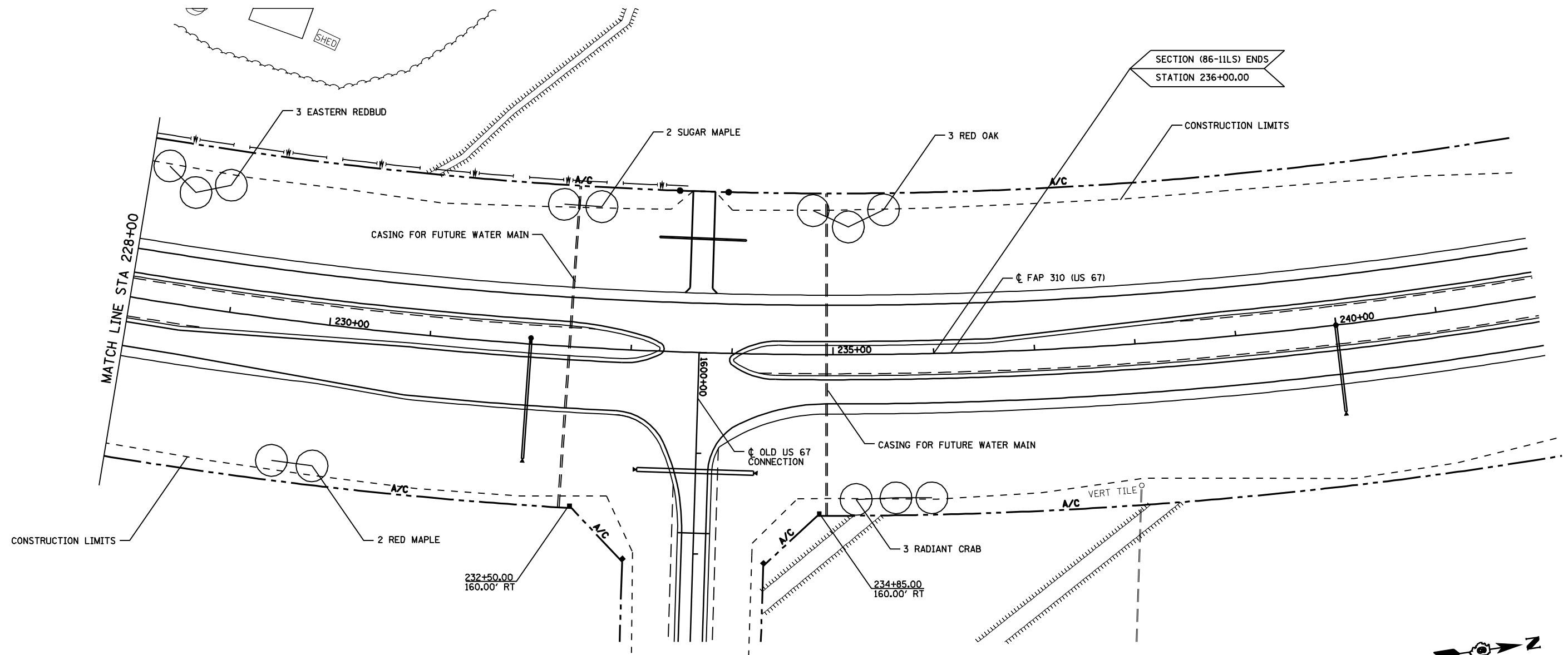


 PROP. SEEDING CLASS 4 (MODIFIED)

REVISIONS	
NAME	DATE

ILLINOIS DEPARTMENT OF TRANSPORTATION  
**LANDSCAPING PLAN**  
 FAP ROUTE 310  
 STA 214+00 TO STA 228+00  
 SECTION 86-11 LS  
 SCOTT COUNTY  
 SCALE: VERT. \_\_\_\_\_ DRAWN BY EMR  
 HORIZ. \_\_\_\_\_ CHECKED BY WTS  
 DATE \_\_\_\_\_

F.A.P. RTE.	SECTION	COUNTY	TOTAL SHEETS	SHEET NO.
310	86-11LS	SCOTT	19	19
STA. 228+00		TO STA. 242+00		
FED. ROAD DIST. NO.		ILLINOIS FED. AID PROJECT		



REVISIONS	
NAME	DATE

ILLINOIS DEPARTMENT OF TRANSPORTATION

**LANDSCAPING PLAN**

FAP ROUTE 310  
 STA 228+00 TO STA 242+00  
 SECTION 86-11 LS  
 SCOTT COUNTY

SCALE: VERT. \_\_\_\_\_  
 HORIZ. \_\_\_\_\_

DRAWN BY EMR  
 CHECKED BY WTS