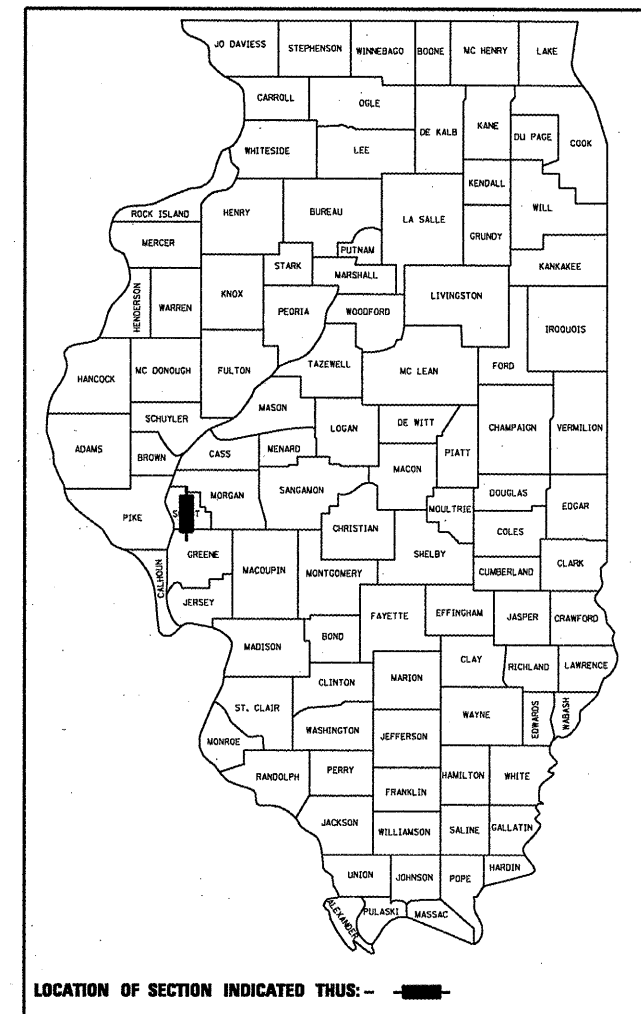


STATE OF ILLINOIS
DEPARTMENT OF TRANSPORTATION
DIVISION OF HIGHWAYS

F.A.P. RTE.	SECTION	COUNTY	TOTAL SHEETS	SHEET NO.
566	(1-NRHM,2)RS-3	SCOTT	30	1
FED. ROAD DIST. NO.	ILLINOIS	CONTRACT NO. 72882		

D-96-517-04



PROPOSED
HIGHWAY PLANS

FAP ROUTE 566 (IL 106)
SECTION (1-NRHM,2)RS-3

RESURFACING
SCOTT COUNTY
C-96-058-08

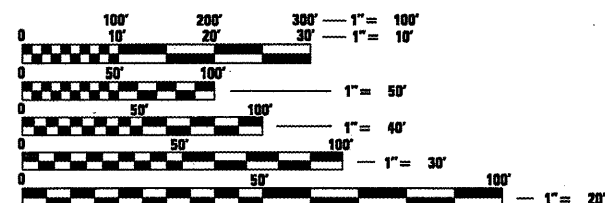
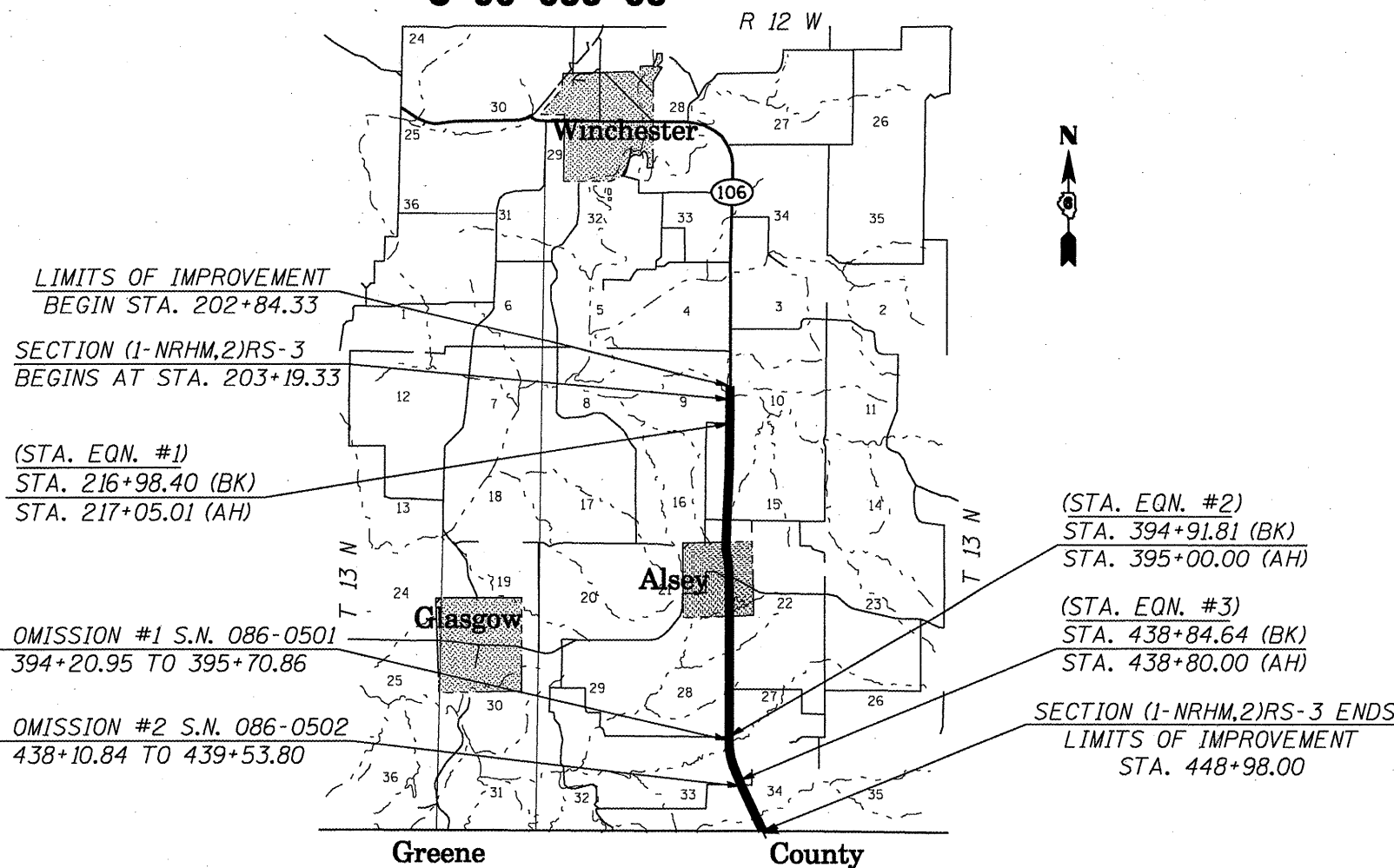
FOR INDEX OF SHEETS, SEE SHEET NO. 2

HIGHWAY CLASSIFICATION

F.A.P. ROUTE 566 (IL 106)

ADT: 1,323 (2007) PV = 82.0%
ADT: 1,650 (2029) SU = 11.0%
DESIGN SPEED: 55 MPH MU = 7.0%
POSTED SPEED: 55 MPH

CLASSIFICATION: MINOR ARTERIAL (NON-URBAN)



FULL SIZE PLANS HAVE BEEN PREPARED USING STANDARD ENGINEERING SCALES. REDUCED SIZED PLANS WILL NOT CONFORM TO STANDARD SCALES. IN MAKING MEASUREMENTS ON REDUCED PLANS, THE ABOVE SCALES MAY BE USED.

J.U.L.I.E.
JOINT UTILITY LOCATION INFORMATION FOR EXCAVATION
1-800-892-0123
OR 811

PROJECT ENGINEER: SAL MADONIA (217) 782-4716
PROJECT MANAGER: RENE CABRERA (217) 557-9062
TECHNICIAN: JONATHAN COX
CONTRACT NO. 72882

GROSS LENGTH = 24,603.51 FT. = 4.66 MI.
NET LENGTH = 24,568.51 FT. = 4.65 MI.

STATE OF ILLINOIS
DEPARTMENT OF TRANSPORTATION
DIVISION OF HIGHWAYS

SUBMITTED *December 28, 2007*
Roger A. Driskell
DEPUTY DIRECTOR OF HIGHWAYS, REGION ENGINEER

March 19, 2010
Scott E. Stett, P.E.
ENGINEER OF DESIGN AND ENVIRONMENT

March 19, 2010
Christine M. Reed
DIRECTOR OF HIGHWAYS, CHIEF ENGINEER

PRINTED BY THE AUTHORITY
OF THE STATE OF ILLINOIS