

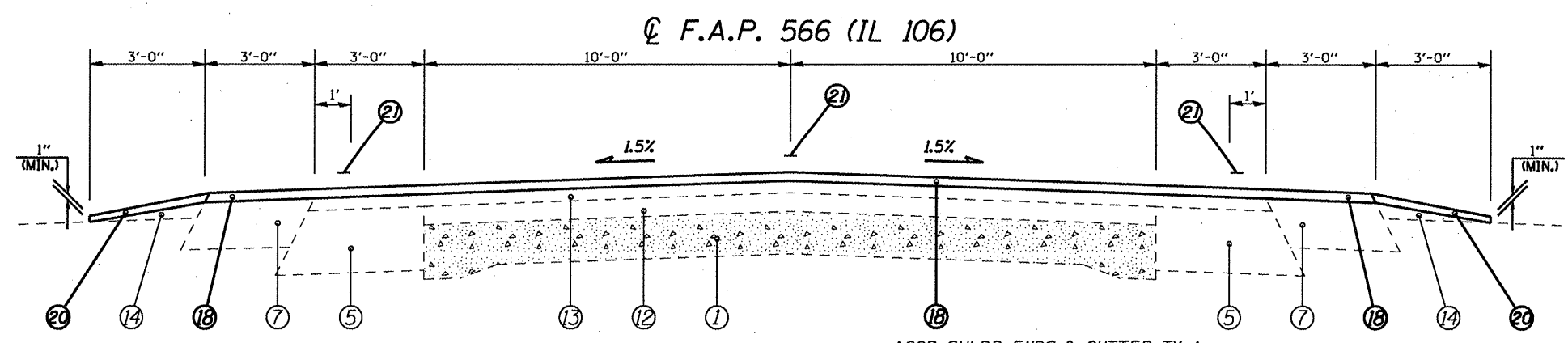
[729.0'] \*\* (9) STA. 308+32.00 TO 315+61.00 EXIST. PCC&G LOCATED FR. STA. 307+94.50 TO 311+38.20 LT  
 [558.2'] (28) STA. 439+53.80 TO 445+12.00  
 [288.0'] \*\*\* (30) STA. 445+75.00 TO 448+63.00 EXIST. GUTTER TYPE A ENDS AT STA. 448+58.00 LT

(STA EQN #3)  
 STA. 438+84.64 (BK)=  
 STA. 438+80.00 (AH)

**BRIDGE OMISSION #2**  
 S.N. 086-0502  
 STA. 438+10.84 TO 438+84.64  
 STA. 438+80.00 TO 439+53.80

- ### LEGEND
- ① EXIST. P.C.C. PAVEMENT 9"-7"-9"
  - ② EXIST. BITUMINOUS CONCRETE BASE COURSE VARIABLE DEPTH
  - ③ EXIST. BITUMINOUS CONCRETE BASE COURSE WIDENING 9"
  - ④ EXIST. BITUMINOUS CONCRETE BASE COURSE WIDENING 10"
  - ⑤ EXIST. BITUMINOUS CONCRETE BASE COURSE WIDENING 10½"
  - ⑥ EXIST. BITUMINOUS CONCRETE BASE COURSE WIDENING 8"
  - ⑦ EXIST. BITUMINOUS SHOULDER 8"
  - ⑧ EXIST. BITUMINOUS SHOULDER
  - ⑨ EXIST. CONCRETE GUTTER, TY A (MODIFIED)
  - ⑩ EXIST. CONCRETE GUTTER, TY B
  - ⑪ EXIST. CONCRETE GUTTER, TY A
  - ⑫ EXIST. BITUMINOUS OVERLAY, 3"
  - ⑬ EXIST. BITUMINOUS OVERLAY, 2"
  - ⑭ EXIST. AGGREGATE SHOULDERS, TY B
  - ⑮ PROP. HMA SURFACE REMOVAL, VARIABLE DEPTH \*
  - ⑯ PROP. HMA SURFACE REMOVAL, 2"
  - ⑰ PROP. LEVELING BINDER (MACHINE METHOD), N50 ¾"
  - ⑱ PROP. HMA CONCRETE SURFACE COURSE, MIX "C", N50 1 1/2 "
  - ⑲ PROP. HMA SHOULDERS
  - ⑳ PROP. AGGREGATE SHOULDERS, TY B
  - ㉑ PROP. PAINT PAVEMENT MARKING - LINE 5"

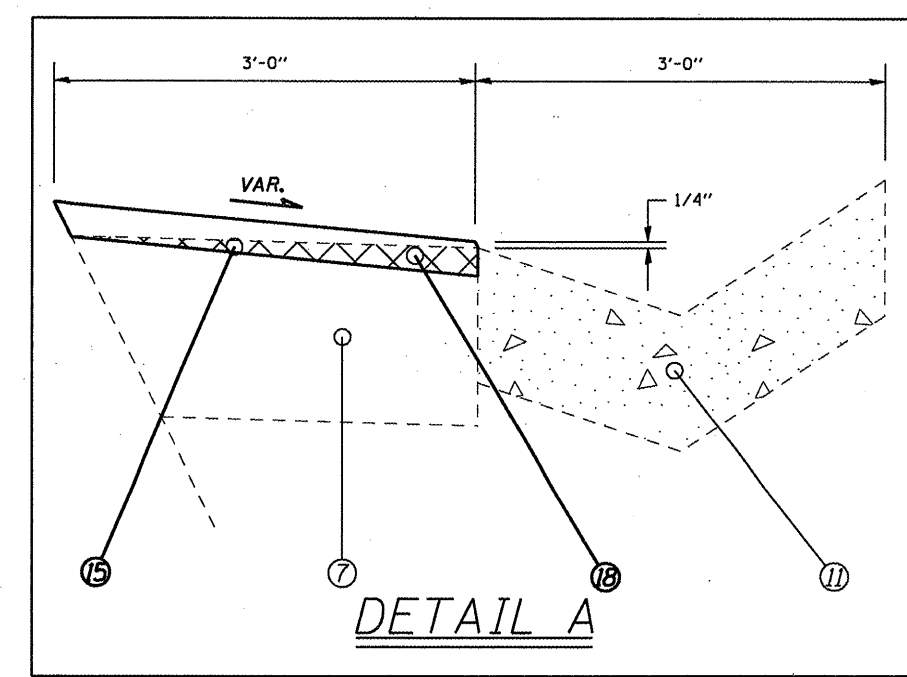
\* NOMINAL MILLING DEPTH 1/2 " @ ②



[230.0'] (11) STA. 319+10.00 TO 321+40.00 AGGR SHLDR ENDS & GUTTER TY A BEGINS @ STA. 321+40.00 RT  
 [154.0'] (16) STA. 339+96.00 TO 341+50.00  
 [295.0'] (18) STA. 343+75.00 TO 346+70.00 AGGR SHLDR ENDS & GUTTER TY A BEGINS @ STA. 346+20.00 LT  
 [309.39'] (22) STA. 395+70.86 TO 398+80.25  
 [63.0'] (29) STA. 445+12.00 TO 445+75.00

(STA EQN #2)  
 STA. 394+91.81 (BK)=  
 STA. 395+00.00 (AH)

**BRIDGE OMISSION #1**  
 S.N. 086-0501  
 STA. 394+20.95 TO 394+91.81  
 STA. 395+00.00 TO 395+70.86



REFER TO MILLING SCHEDULE ON PG. 9

(NOT TO SCALE)

FILE NAME =	USER NAME = coxjm	DESIGNED - RSC	REVISED -	<b>STATE OF ILLINOIS DEPARTMENT OF TRANSPORTATION</b>	<b>TYPICAL SECTIONS</b>		F.A.P. RTE. 566	SECTION (1-NRHM,2)RS-3	COUNTY Scott	TOTAL SHEETS 30	SHEET NO. 7	
CONTRACT NO. 72882	PLOT SCALE = 1/8" = 1' IN.	DRAWN - JWC	REVISED -		SCALE: NTS	SHEET NO. 4 OF 5 SHEETS	STA. 308+32.00 TO STA. 445+75.00	FED. ROAD DIST. NO. [ILLINOIS] FED. AID PROJECT				
	PLOT DATE = Aug-19-2009 07:11:20AM	CHECKED - RSC	REVISED -									
		DATE -	REVISED -									