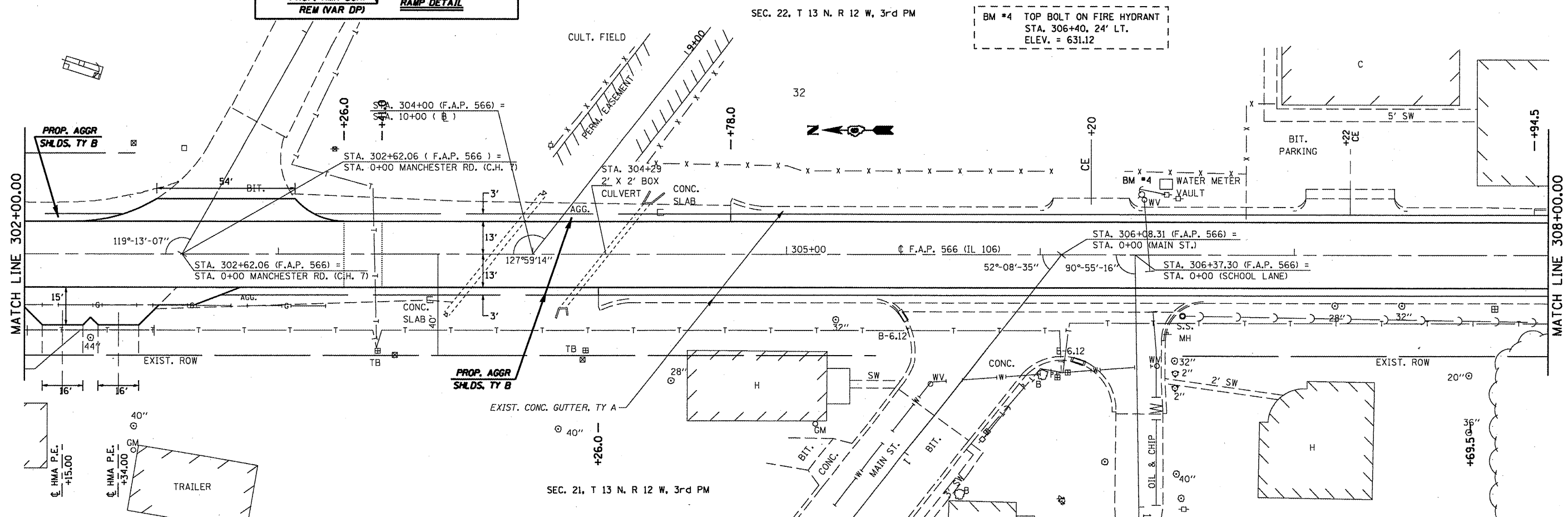


BM #4 TOP BOLT ON FIRE HYDRANT
STA. 306+40, 24' LT.
ELEV. = 631.12



FILE NAME =	USER NAME = coxjw	DESIGNED - RSC	REVISED -	STATE OF ILLINOIS DEPARTMENT OF TRANSPORTATION	PLAN SHEETS		F.A.P. RTE. 566	SECTION (I-NRHM,2)RS-3	COUNTY Scott	TOTAL SHEETS 30	SHEET NO. 20	
cs:\pw_work\PWIDOT\COXJW\dms23631\shp1e20.dgn		DRAWN - JWC	REVISED -		SCALE: 20	SHEET NO. 6 OF 13 SHEETS	STA. 296+00.00 TO STA. 308+00.00	CONTRACT NO. 72882				
PLOT SCALE = 42.0000' / IN.		CHECKED - RSC	REVISED -		FED. ROAD DIST. NO. ILLINOIS FED. AID PROJECT							
PLOT DATE = Aug-19-2009 07:56:25AM		DATE -	REVISED -									