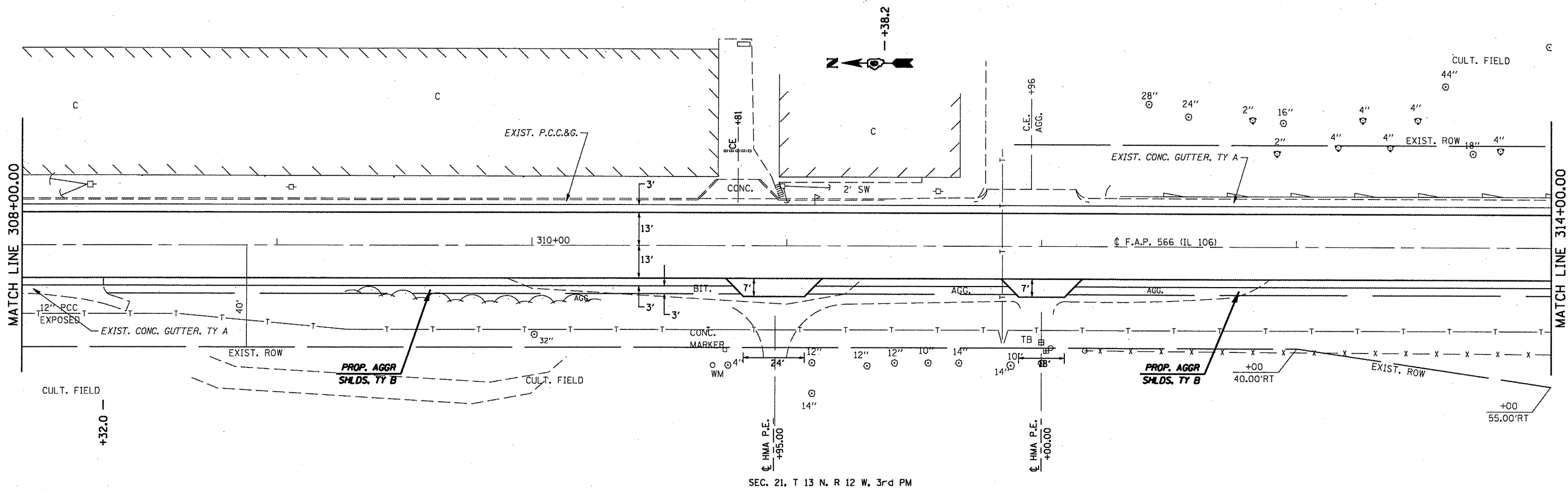
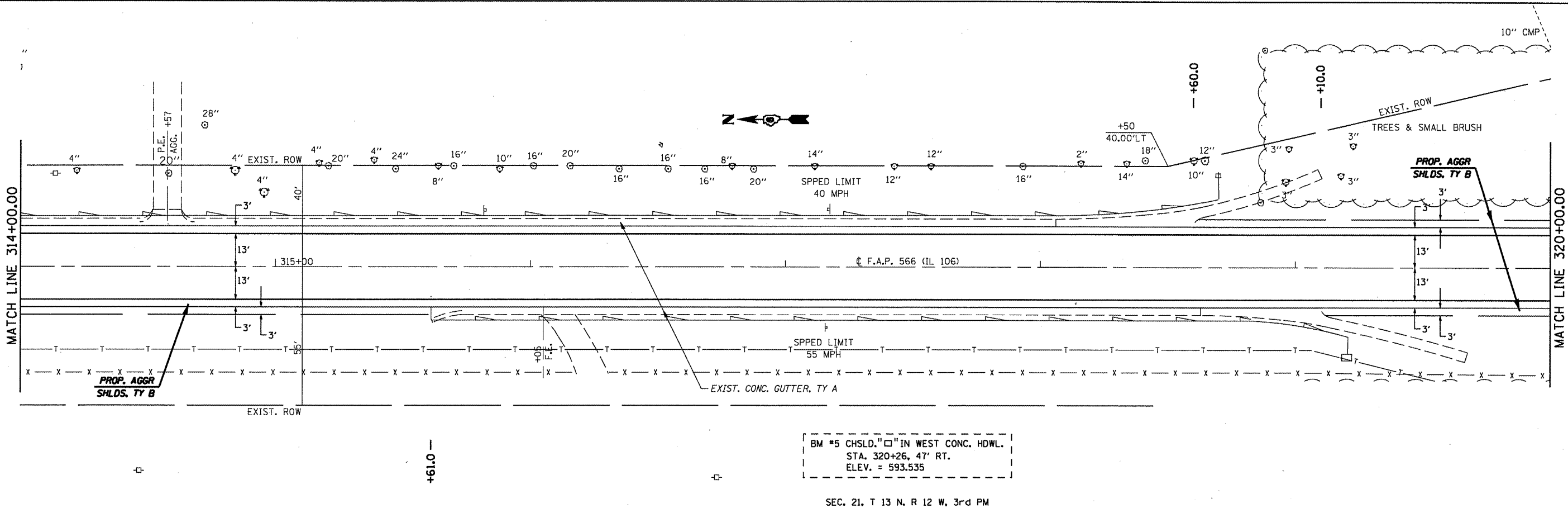


SEC. 22, T 13 N, R 12 W, 3rd PM



SEC. 21, T 13 N, R 12 W, 3rd PM



BM #5 CHSLD. " " IN WEST CONC. HDWL.
 STA. 320+26, 47' RT.
 ELEV. = 593.535

SEC. 21, T 13 N, R 12 W, 3rd PM

FILE NAME =	USER NAME = coxjm	DESIGNED - RSC	REVISED -	STATE OF ILLINOIS DEPARTMENT OF TRANSPORTATION	PLAN SHEETS		F.A.P. RTE. 566	SECTION (1-NRHM,2)RS-3	COUNTY Scott	TOTAL SHEETS 30	SHEET NO. 21	
cs:\pwwork\pwwid\COXJM\dms23631\veh\p128.dgn	PLOT SCALE = 42.0000' / IN.	DRAWN - JWC	REVISED -		SCALE: 20	SHEET NO. 7 OF 13 SHEETS	STA. 308+00.00 TO STA. 320+00.00	CONTRACT NO. 72882				
	PLOT DATE = Aug-19-2009 07:56:29AM	CHECKED - RSC	REVISED -		FED. ROAD DIST. NO. (ILLINOIS) FED. AID PROJECT							
		DATE -	REVISED -									