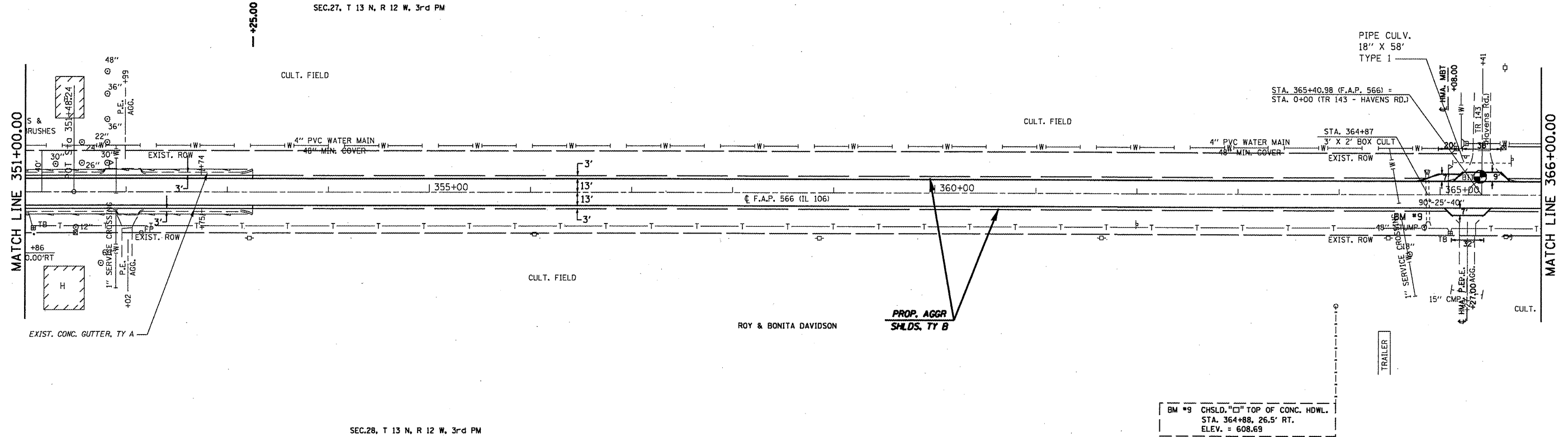


GRAYDON & FLORENCE WILSON

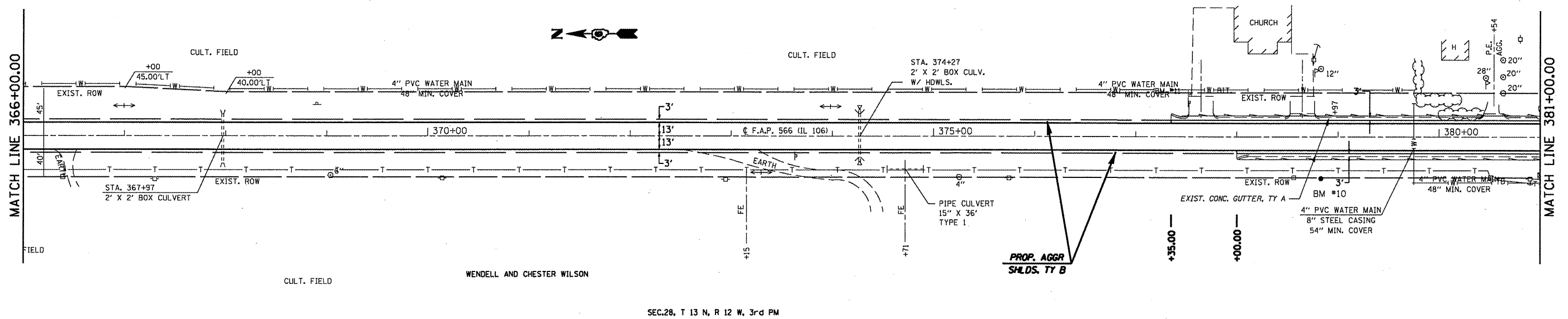
SEC.27, T 13 N, R 12 W, 3rd PM



SEC.28, T 13 N, R 12 W, 3rd PM

SEC.27, T 13 N, R 12 W, 3rd PM

WENDELL AND CHESTER WILSON



SEC.28, T 13 N, R 12 W, 3rd PM

BM #11 N.W. COR. OF W. SIGN POST
STA. 377+53.33' LT.
ELEV. = 622.815

BM #10 GPS #1112
STA. 378+83.41' RT.
ELEV. 616.45

STATE OF ILLINOIS
DEPARTMENT OF TRANSPORTATION

PLAN SHEETS

SCALE: 50 SHEET NO. 10 OF 13 SHEETS STA. 351+00.00 TO STA. 381+00.00

F.A.P. RTE.	SECTION	COUNTY	TOTAL SHEETS	SHEET NO.
566	(1-NRHM,2RS-3	Scott	30	24
FED. ROAD DIST. NO. ILLINOIS FED. AID PROJECT			CONTRACT NO. 72882	

FILE NAME =
c:\pwwork\pwwork\dwg\ms23631\shp10.dwg

USER NAME = coxjw
PLOT SCALE = 1/8" = 100'-0" / IN.
PLOT DATE = Aug-19-2009 07:53:55AM

DESIGNED - RSC	REVISED -
DRAWN - JWC	REVISED -
CHECKED - RSC	REVISED -
DATE -	REVISED -